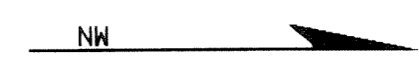
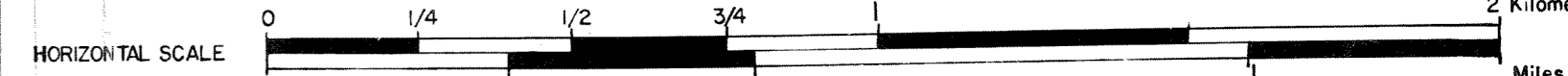


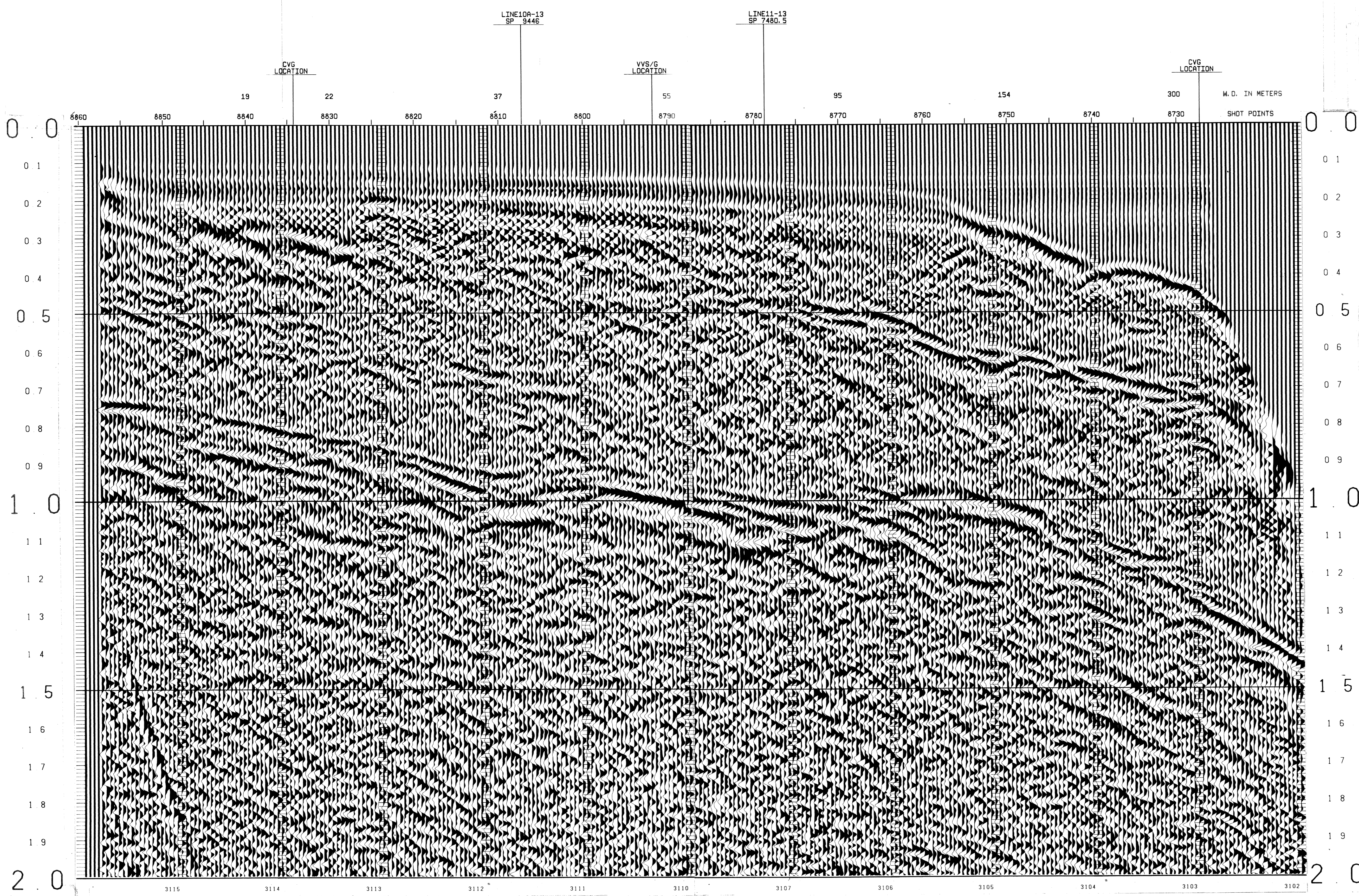
C. L. E. I. M. SEAGULL S. P. A.  
 BLOCK CP13SE  
 LINE 3 SPS 8730 TO 8860



SP-8834	TIME	V-RMS	V-INT
0	4850	4850	
150	4850	5185	
275	5005	5120	
550	5745	6912	
725	5940	7256	
1200	7940	10777	
2000	9250	10924	

SP-8791	TIME	V-RMS	V-INT
0	4850	4850	
225	4850	5120	
500	5005	5120	
800	5745	6912	
905	5940	7256	
1390	7940	10777	
2000	8940	10880	

SP-8730	TIME	V-RMS	V-INT
0	4850	4850	
475	4850	5262	
750	5005	7541	
1000	5745	7621	
1100	5940	10777	
1675	7940	10777	
2000	8440	10651	



# SEAGULL SICILY

## LINE 3 SPS8730-8860

### 12 FOLD 24 TRACE

#### RECORDING DATA



SHOT BY S. S. L. PARTY 723 BOAT K/R TONDER APRIL 1974

INSTRUMENTS- DFS 3 NEARS AND FARMS FORMAT CABLE- LENGTH 2400 METRES

RECORD LENGTH- 6 SECONDS, 4 MS SAMPLE RATE GROUPS 48

FIELD FILTERS- LOWCUT-8 HZ / SLOPE-18 DB/OCTAVE GEOPHONE ARRAY 30X1.5 M

ENERGY SOURCE- ESSO SEISPROBE ARRAY 4X2 GUNS DEPTH 10-20 METERS

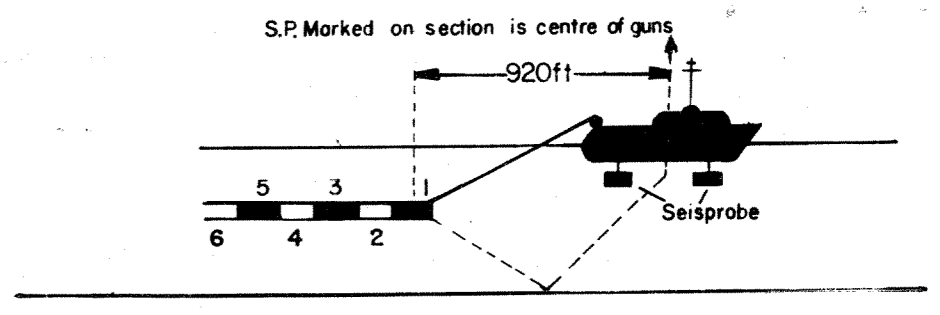
DEPTH 10 METERS MULTIDYNE ACC. CANCELLING

COVERAGE- 24 FOLD, 48 TRACE GROUP INTERVAL 50 M

TAPE FORMAT- 1/2 INCH 9 TRACK 800 BPI SEGA SURVEY- PRIMARY LORAN C

BOAT DIRECTION- DIRECTION OF INCREASING SHOTPOINTS SECONDARY SAT. NAV.

POLARITY- COMPRESSIONAL WAVE- POSITIVE NO. ON TAPE, BREAKS UP ON SECTION



#### PROCESSING DATA

TRUE AMPLITUDE RECOVERY AND SEISMIC EDIT

DECONVOLUTION BEFORE STACK-

- NON-WHITENING GAPPED
- 1 FILTER PER TRACE, 196 MS IN LENGTH WITH A 28 MS GAP
- DESIGN GATE- TRACE 1 ACCORDING TO WD, 1200-1300 MS TO MAX. TIME
- TRACE 24 ACCORDING TO WD, 360- 550 MS TO MAX. TIME

12 FOLD 24 TRACE COMMON DEPTH POINT GATHER UTILISING NEAR 24 GROUPS ONLY

VELOCITY ANALYSIS- CONSTANT VELOCITY GATHER AND VARIABLE VELOCITY STACK/GATHER

STATIC CORRECTION- FOR SHOT AND SEISMOMETER DEPTH 15 MS

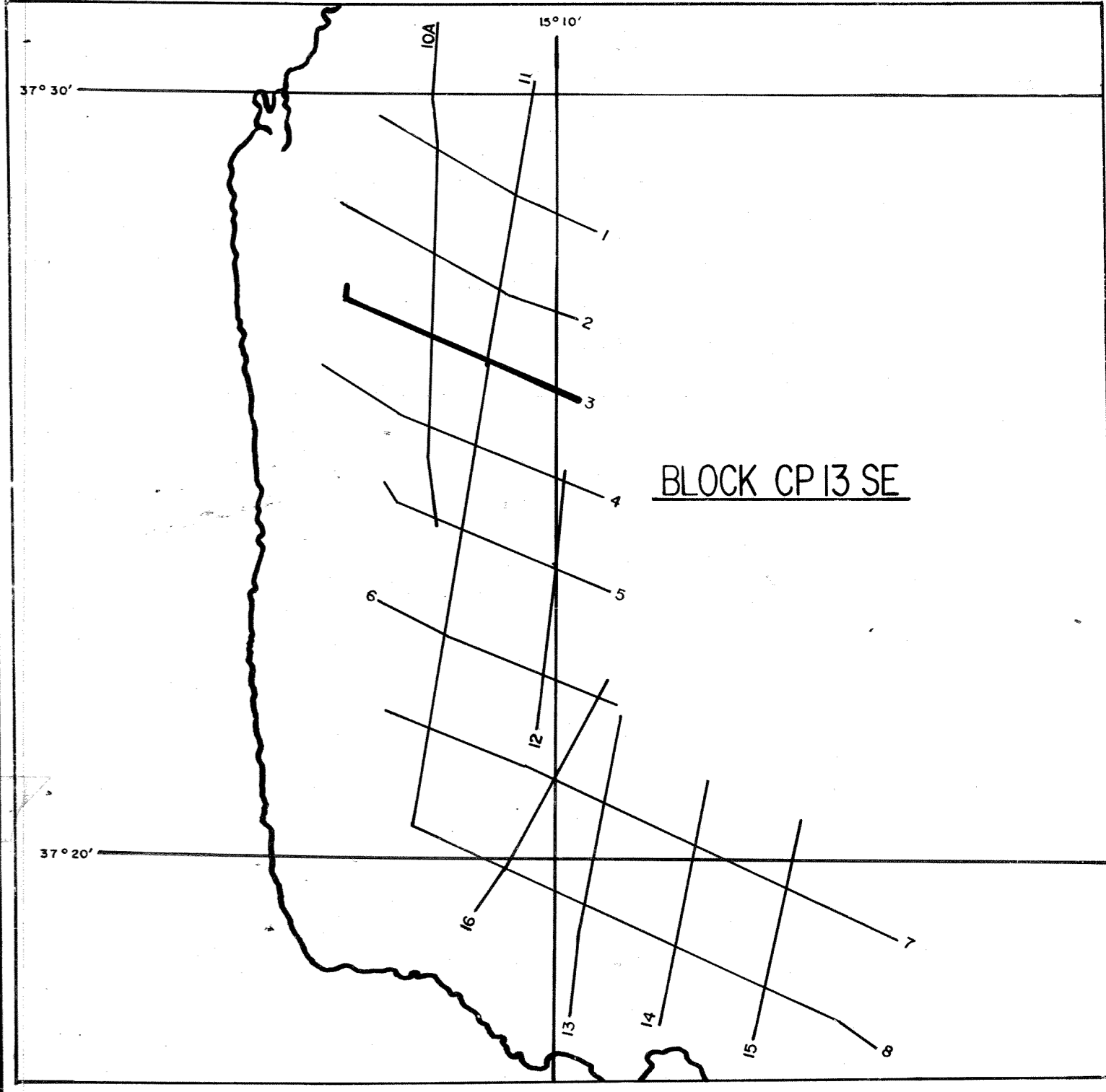
NORMAL MOVEOUT CORRECTION

FIRST BREAK SUPPRESSION- SEE TAPER-ON RECORD

12 FOLD COMMON DEPTH POINT STACK

DECONVOLUTION AFTER STACK-

- NON-WHITENING GAPPED
- 1 FILTER PER TRACE, 356 MS IN LENGTH WITH A 28 MS GAP
- DESIGN GATE- 350 MS TO MAX. TIME



DATE PROCESSED- MAY/JUNE 1974

PARTY 722, GEOPHYSICAL SERVICE INTERNATIONAL LIMITED, CROYDON, U.K.