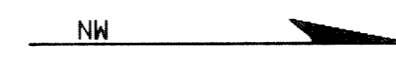
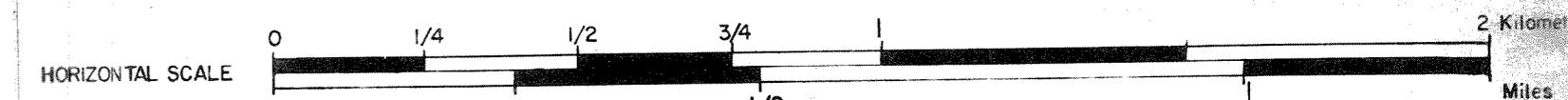


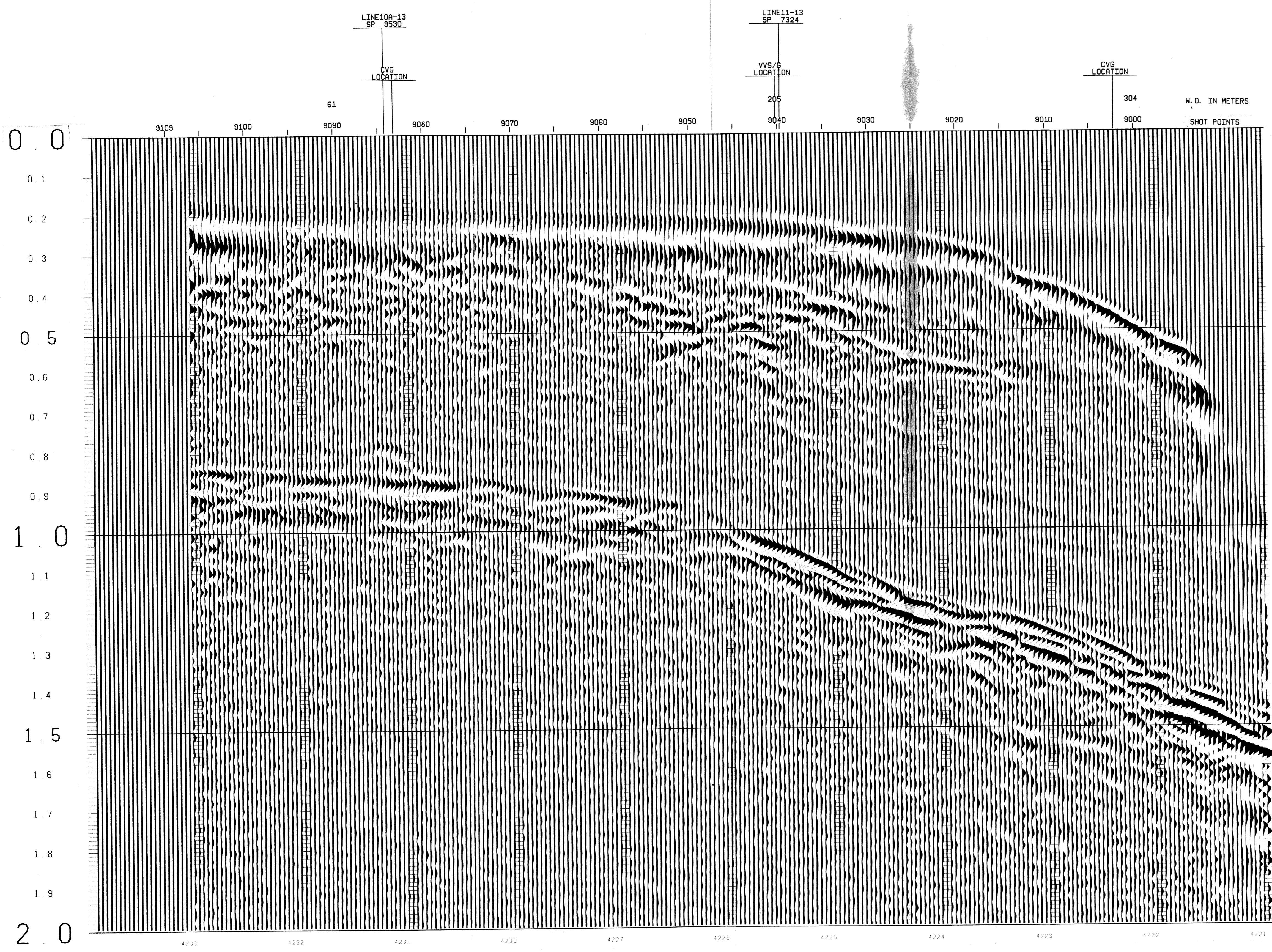
C. L. E. I. M. SEAGULL S. P. A.
 BLOCK CP13SE
 LINE 1 SPS 9000 TO 9109



SP-9063	TIME	V-RMS	V-INT
0	4850	4850	
150	4850	5107	
355	5000	6457	
710	5775	7580	
900	6200	11055	
1050	7100	12806	
1300	8500	13447	
2000	10500		

SP-9040	TIME	V-RMS	V-INT
0	4850	4850	
125	4850	5047	
515	5000	6035	
875	5450	7977	
1240	6300	9657	
1525	7050	12100	
1625	7460	11817	
2000	8450		

SP-9002	TIME	V-RMS	V-INT
0	4850	4850	
450	4850	5259	
700	5000	5996	
975	5300	7890	
1380	6100	8709	
1660	6700	12749	
1790	7310	12412	
2000	8000		



SEAGULL SICILY

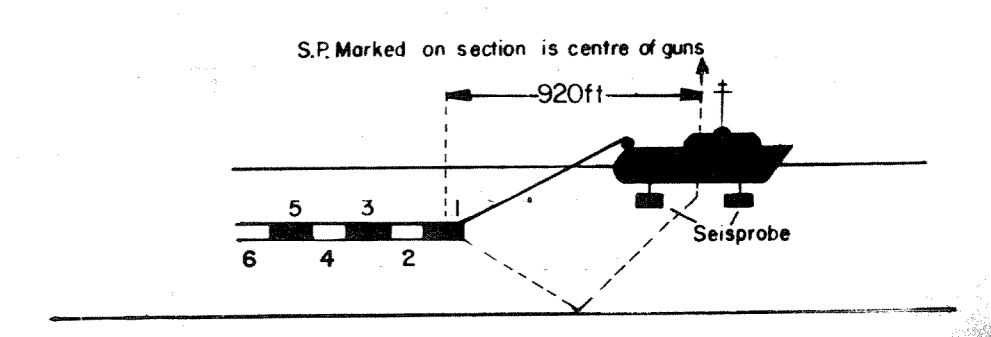
LINE 1 SPS 9000-9109



12 FOLD 24 TRACE

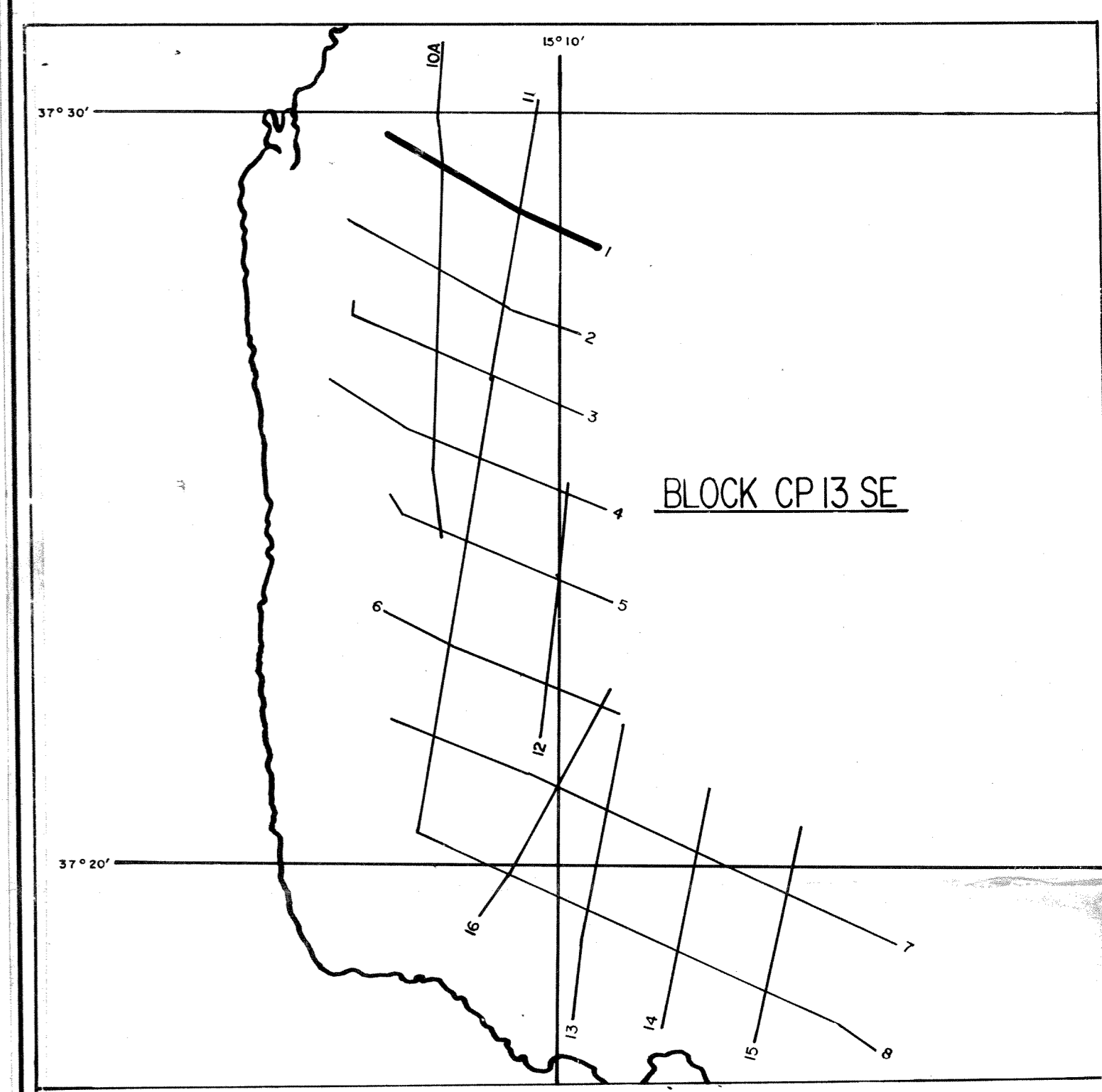
RECORDING DATA

SHOT BY S.S.L. PARTY 723 BOAT K/R TONDER APRIL 1974
 INSTRUMENTS- DFS 3 NEARS AND FARS FORMAT CABLE- LENGTH 2400 METRES
 RECORD LENGTH- 6 SECONDS, 4 MS SAMPLE RATE GROUPS 48
 FIELD FILTERS- LOWCUT-8 HZ / SLOPE-18 DB/OCTAVE GEOPHONE ARRAY 30X1.5 M
 HIGHCUT-62 HZ / SLOPE- 72 DB/OCTAVE SEISMOMETER TYPE-
 ENERGY SOURCE- ESSO SEISPROBE MULTIDYNE ACC. CANCELLING
 ARRAY 4X2 GUNS DEPTH 10-20 METERS
 DEPTH 10 METERS SHOT INTERVAL 50 M
 COVERAGE- 24 FOLD, 4-8 TRACE SURVEY- PRIMARY LORAN C
 TAPE FORMAT- 1/2 INCH 9 TRACK 800 BPI SEGA SECONDARY SAT. NAV.
 BOAT DIRECTION- DIRECTION OF INCREASING SHOTPOINTS
 POLARITY- COMPRESSONAL WAVE- POSITIVE NO. ON TAPE, BREAKS UP ON SECTION



PROCESSING DATA

TRUE AMPLITUDE RECOVERY AND SEISMIC EDIT
 DECONVOLUTION BEFORE STACK-
 NON-WHITENING GAPPED
 1 FILTER PER TRACE, 196 MS IN LENGTH WITH A 28 MS GAP
 DESIGN GATE- TRACE 1 ACCORDING TO WD, 1200-1300 MS TO MAX. TIME
 TRACE 24 ACCORDING TO WD, 360-550 MS TO MAX. TIME
 12 FOLD 24 TRACE COMMON DEPTH POINT GATHER UTILISING NEAR 24 GROUPS ONLY
 VELOCITY ANALYSIS- CONSTANT VELOCITY GATHER AND VARIABLE VELOCITY STACK/GATHER
 STATIC CORRECTION- FOR SHOT AND SEISMOMETER DEPTH 14 MS
 NORMAL MOVEOUT CORRECTION
 FIRST BREAK SUPPRESSION- SEE TAPER-ON RECORD
 12 FOLD COMMON DEPTH POINT STACK
 DECONVOLUTION AFTER STACK-
 NON-WHITENING GAPPED
 1 FILTER PER TRACE, 356 MS IN LENGTH WITH A 28 MS GAP
 DESIGN GATE- 350 MS TO MAX. TIME



DATE PROCESSED- MAY/JUNE 1974

PARTY 722, GEOPHYSICAL SERVICE INTERNATIONAL LIMITED, CROYDON, U.K.