

SEAGULL SICILY

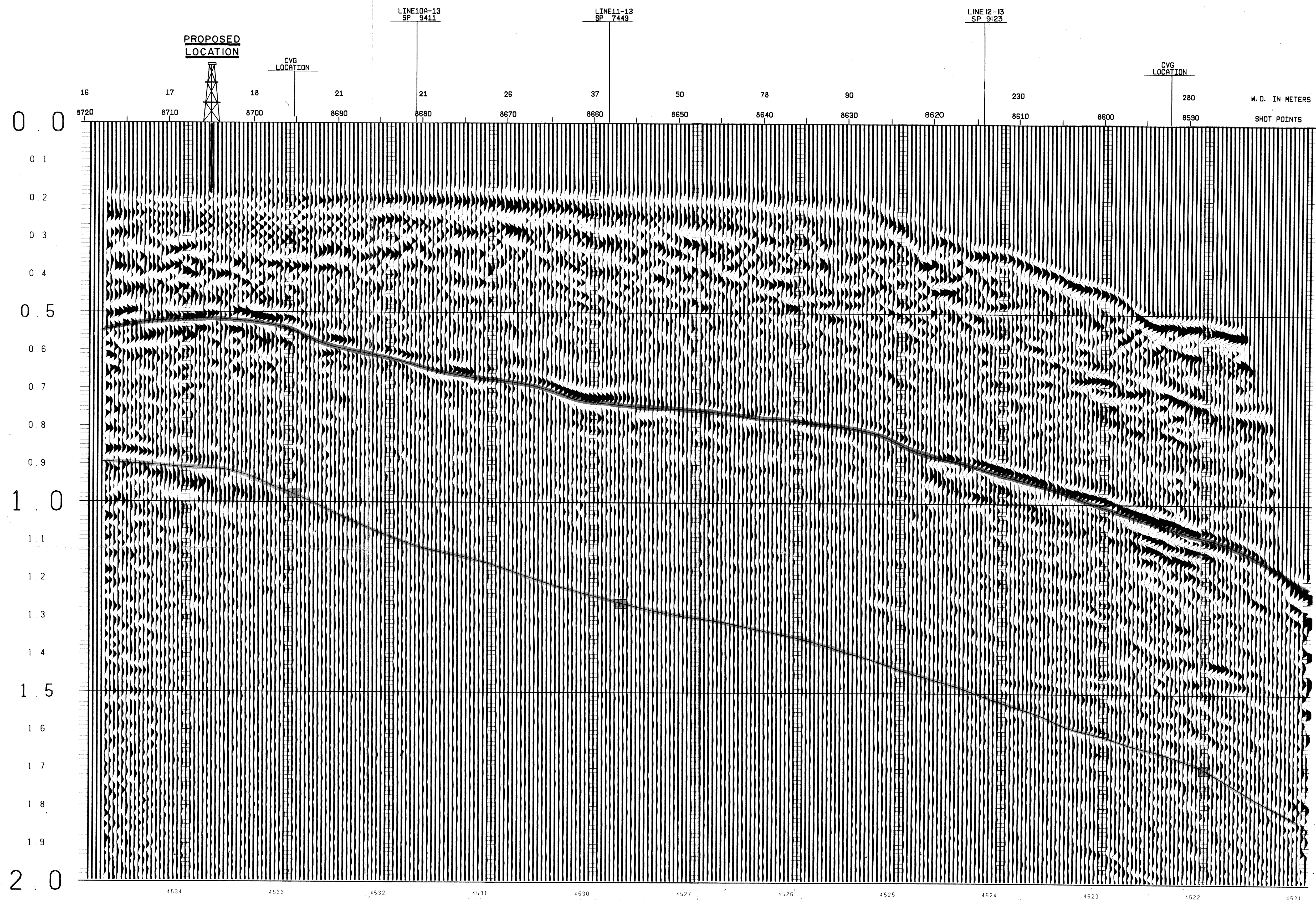
LINE 4 SPS8590-8720

12 FOLD 24 TRACE

SP-8695	TIME	V-RMS	V-INT
0	4850	4850	
200	4850	5204	
400	5050	5657	
600	5400	6100	
800	5750	6548	
1000	6100	7000	
1200	6450	7456	
1400	6800	7908	
1600	7150	8360	
1800	7500	8812	
2000	7850	9264	

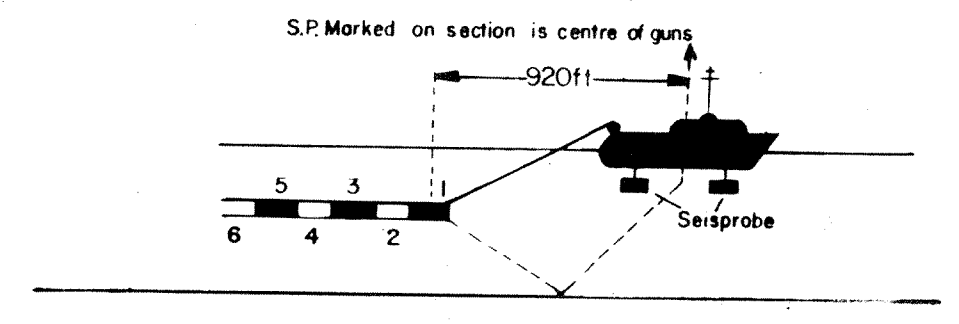
SP-8657	TIME	V-RMS	V-INT
0	4850	4850	
210	4850	5099	
520	5000	5451	
590	5350	5804	
700	5500	6156	
850	6100	6808	
980	6950	7460	
1225	8360	8112	
2000	10900	13188	

SP-8692	TIME	V-RMS	V-INT
0	4850	4850	
500	4850	5144	
750	4850	5438	
840	5250	5732	
1020	5450	6026	
1125	6100	6720	
1300	6700	7414	
1800	8150	8108	
2000	9450	8802	



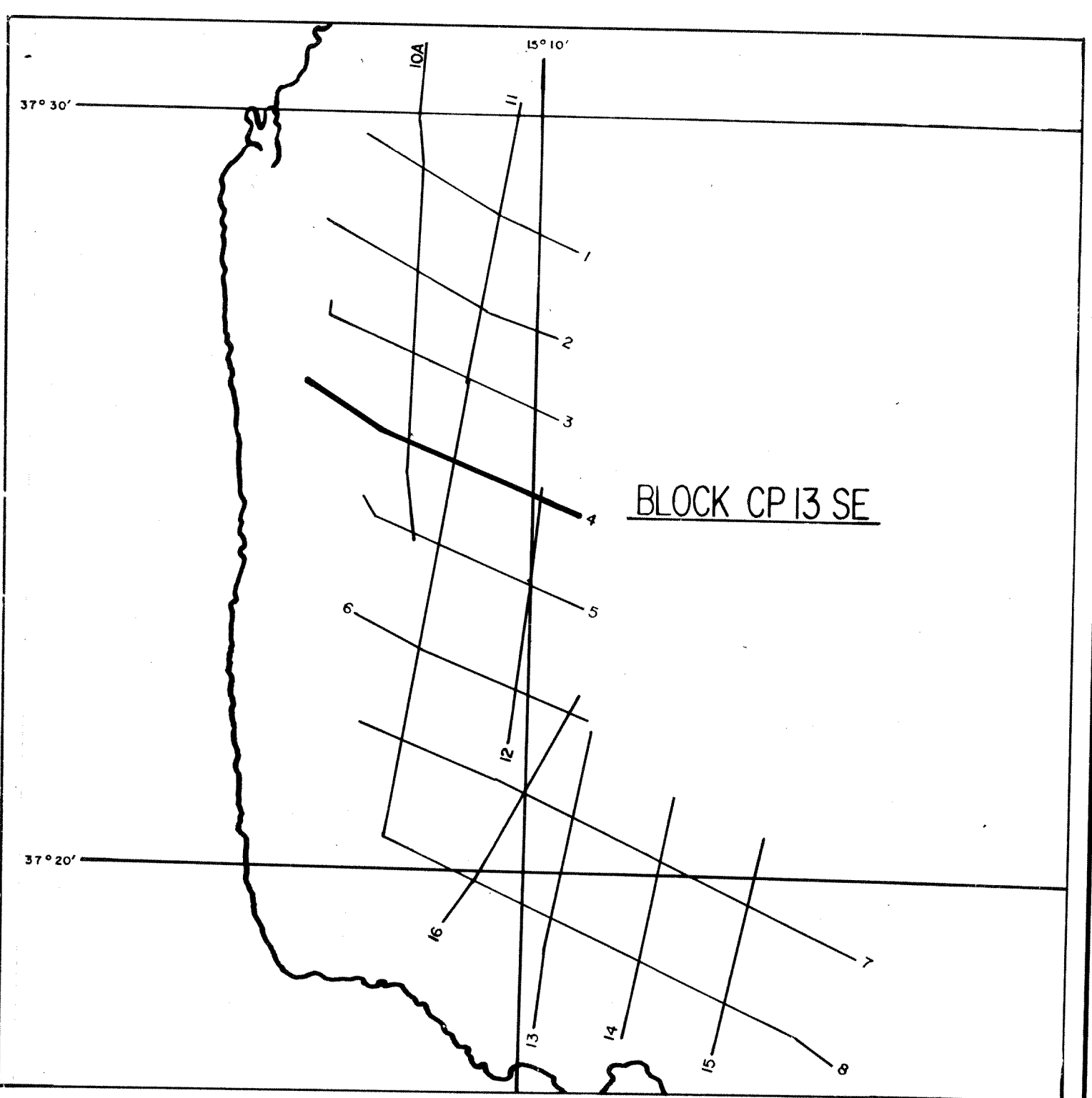
RECORDING DATA

SHOT BY S.S.L. PARTY 723 BOAT K/R TONDER APRIL 1974
 INSTRUMENTS- DFS 3 NEARS AND FARS FORMAT CABLE- LENGTH 2400 METRES
 RECORD LENGTH- 6 SECONDS, 4 MS SAMPLE RATE GROUPS 48
 FIELD FILTERS- LOWCUT-8 HZ / SLOPE-18 DB/OCTAVE SEISMO METER TYPE- GEOPHONE ARRAY 30X1.5 M
 HIGHCUT-62 HZ / SLOPE- 72 DB/OCTAVE SEISMO METER TYPE- MULTIDYNE ACC. CANCELLING
 ENERGY SOURCE- ESSO SEISPROBE ARRAY 4X2 GUNS DEPTH 10-20 METERS
 DEPTH 10 METERS GROUP INTERVAL 50 M
 SURVEY- PRIMARY LORAN C
 SECONDARY SAT. NAV.
 POLARITY- COMPRESSIONAL WAVE- POSITIVE NO. ON TAPE, BREAKS UP ON SECTION



PROCESSING DATA

TRUE AMPLITUDE RECOVERY AND SEISMIC EDIT
 DECONVOLUTION BEFORE STACK-
 NON-WHITENING GAPPED
 1 FILTER PER TRACE, 196 MS IN LENGTH WITH A 28 MS GAP
 DESIGN GATE- TRACE 1 ACCORDING TO WD, 1200-1300 MS TO MAX. TIME
 TRACE 24 ACCORDING TO WD, 360- 550 MS TO MAX. TIME
 12 FOLD 24 TRACE COMMON DEPTH POINT GATHER UTILISING NEAR 24 GROUPS ONLY
 VELOCITY ANALYSIS- CONSTANT VELOCITY GATHER AND VARIABLE VELOCITY STACK/GATHER
 STATIC CORRECTION- FOR SHOT AND SEISMO METER DEPTH 15 MS
 NORMAL MOVEOUT CORRECTION
 FIRST BREAK SUPPRESSION- SEE TAPER-ON RECORD
 12 FOLD COMMON DEPTH POINT STACK
 DECONVOLUTION AFTER STACK-
 NON-WHITENING GAPPED
 1 FILTER PER TRACE, 356 MS IN LENGTH WITH A 28 MS GAP
 DESIGN GATE- 350 MS TO MAX. TIME



DATE PROCESSED- MAY/JUNE 1974

PARTY 722, GEOPHYSICAL SERVICE INTERNATIONAL LIMITED, CROYDON, U.K.

RISERVATO Encl. 6
 SEZIONE 20 MAG. 1977
 Pos. 2031
 Sez. Posiz.

PERMIT CP. 13. SE
 GEOLOGICAL INTERPRETATION OF LINE 4

Quaternary - Pliocene
 Jurassic