

SEAGULL SICILY

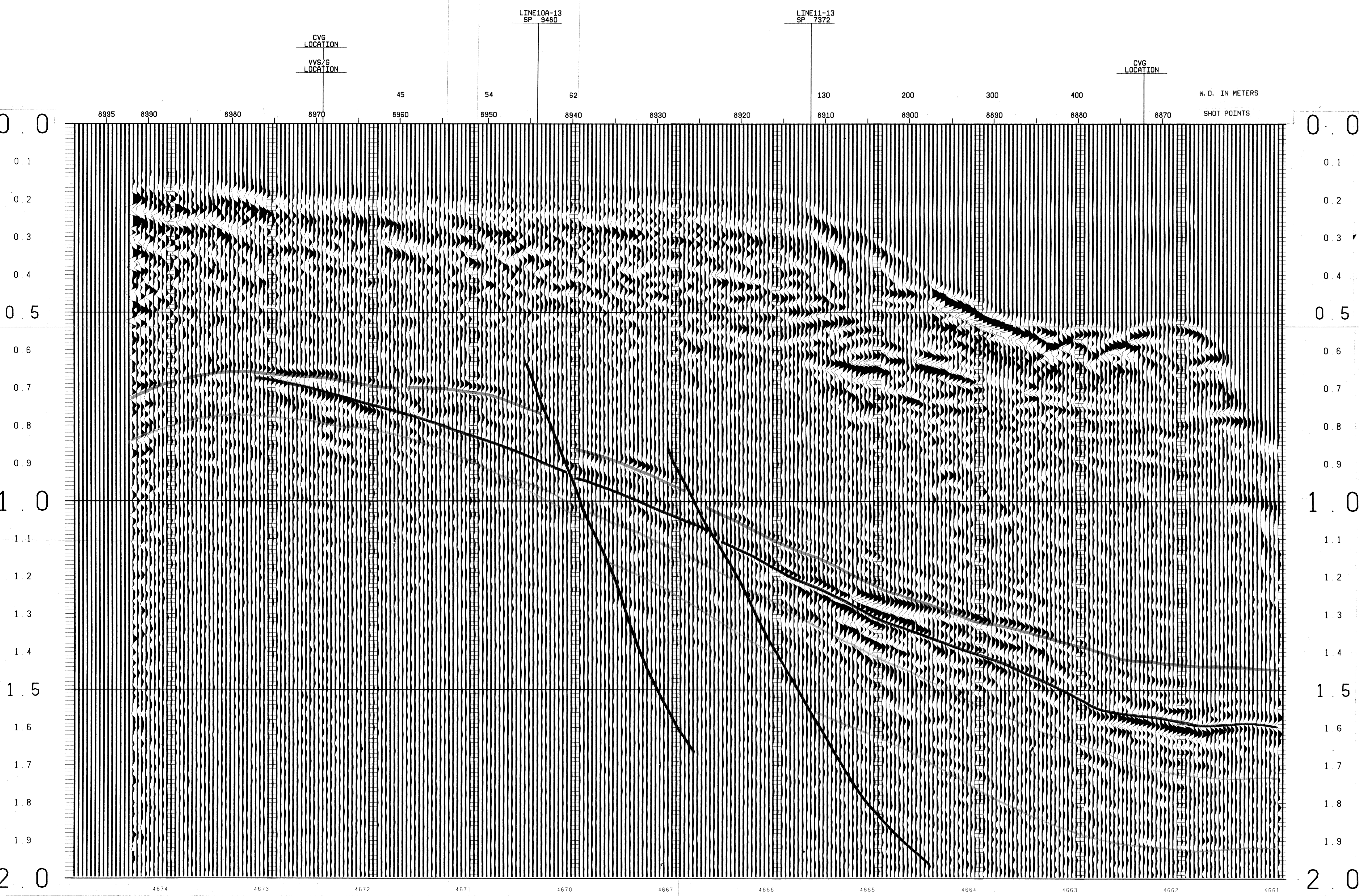
LINE 2 SPS 8870-8995

12 FOLD 24 TRACE

SP-8969	TIME	V-RMS	V-INT
	0	4850	4850
	150	4850	5080
	425	5000	5857
	490	5250	6043
	700	5500	6043
	850	5800	6043
	1000	6100	6043
	1300	6500	11172
	2000	10500	13447

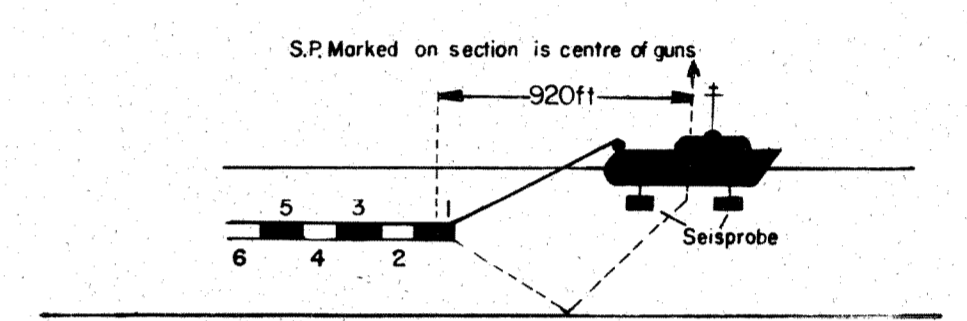
SP-8911	TIME	V-RMS	V-INT
	0	4850	4850
	250	4850	5048
	500	4950	6022
	620	5175	6217
	865	5490	6217
	1150	6060	7530
	1650	7700	10545
	2000	8700	12369

SP-8872	TIME	V-RMS	V-INT
	0	4850	4850
	525	4850	5239
	700	4950	5239
	855	5000	5239
	1050	5350	6670
	1350	5800	7514
	1750	7500	11341
	2000	8500	12543



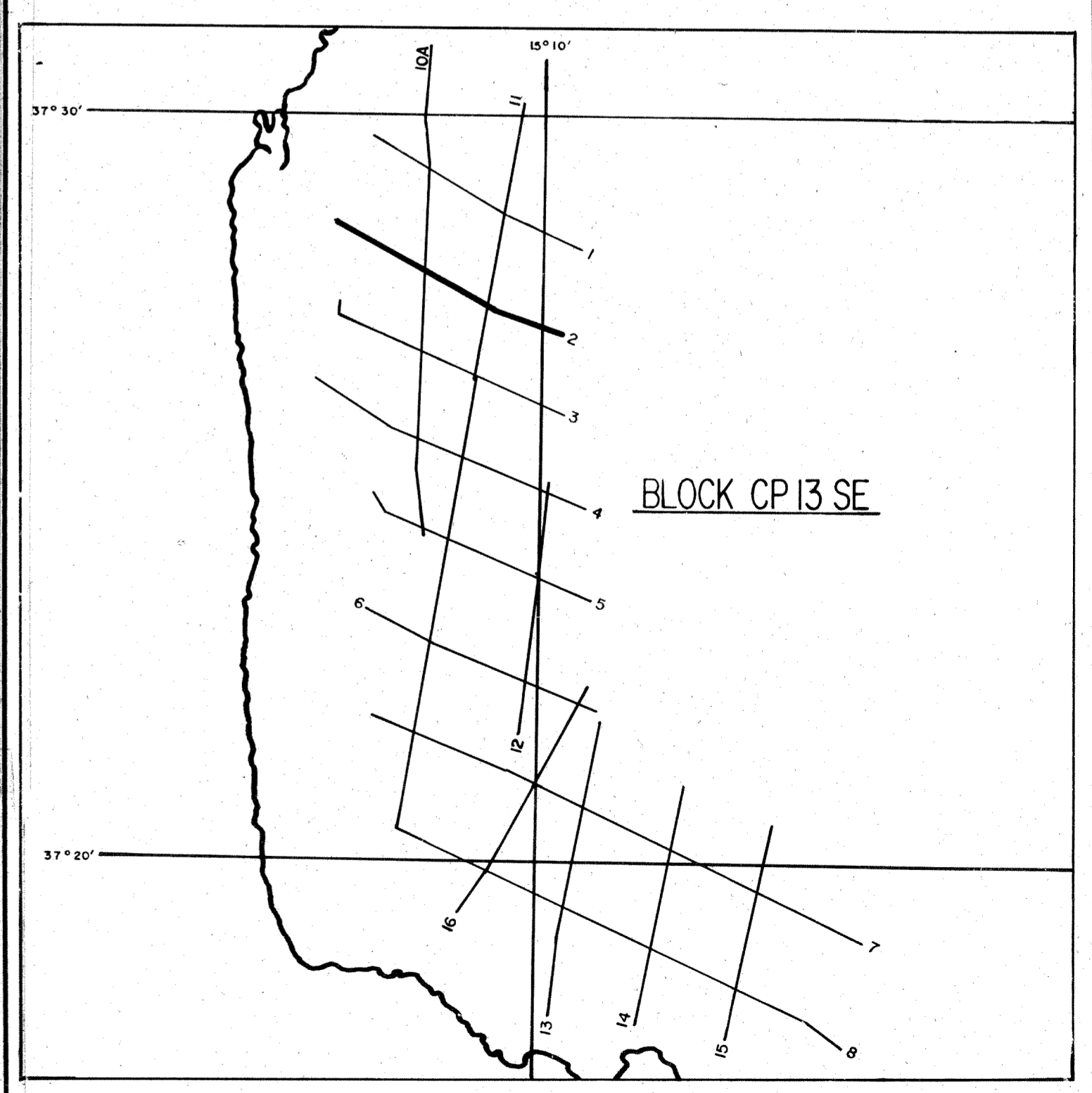
RECORDING DATA

SHOT BY S.S.L. PARTY 723 BOAT K/R TONDER APRIL 1974
 INSTRUMENTS- DFS 3 NEARS AND FARs FORMAT CABLE- LENGTH 2400 METRES
 RECORD LENGTH- 6 SECONDS, 4 MS SAMPLE RATE GROUPS 48
 FIELD FILTERS- LOWCUT-8 HZ / SLOPE-18 DB/OCTAVE GEOPHONE ARRAY 30X1.5 M
 HIGHCUT-62 HZ / SLOPE-72 DB/OCTAVE SEISMOMETER TYPE- MULTIDOME ACC. CANCELLING
 ENERGY SOURCE- ESSO SEISPROBE ARRAY 4X2 GUNS DEPTH 10-20 METERS
 DEPTH 10 METERS GROUP INTERVAL 50 M
 COVERAGE- 24 FOLD, 48 TRACE SURVEY- PRIMARY LORAN C
 TAPE FORMAT- 1/2 INCH 9 TRACK 800 BPI SEGA SECONDARY SAT. NAV.
 BOAT DIRECTION- DIRECTION OF INCREASING SHOTPOINTS
 POLARITY- COMPRESSIONAL WAVE- POSITIVE NO. ON TAPE, BREAKS UP ON SECTION



PROCESSING DATA

TRUE AMPLITUDE RECOVERY AND SEISMIC EDIT
 DECONVOLUTION BEFORE STACK-
 NON-WHITENING GAPPED
 1 FILTER PER TRACE, 196 MS IN LENGTH WITH A 28 MS GAP
 DESIGN GATE- TRACE 1 ACCORDING TO WD, 1200-1300 MS TO MAX. TIME
 TRACE 24 ACCORDING TO WD, 360- 550 MS TO MAX. TIME
 12 FOLD 24 TRACE COMMON DEPTH POINT GATHER UTILISING NEAR 24 GROUPS ONLY
 VELOCITY ANALYSIS- CONSTANT VELOCITY GATHER AND VARIABLE VELOCITY STACK/GATHER
 STATIC CORRECTION- FOR SHOT AND SEISMOMETER DEPTH 15MS
 NORMAL MOVEOUT CORRECTION
 FIRST BREAK SUPPRESSION- SEE TAPER-ON RECORD
 12 FOLD COMMON DEPTH POINT STACK
 DECONVOLUTION AFTER STACK-
 NON-WHITENING GAPPED
 1 FILTER PER TRACE, 356 MS IN LENGTH WITH A 28 MS GAP
 DESIGN GATE- 350 MS TO MAX. TIME



PERMIT CP.13. SE Encl. 2
 GEOLOGICAL INTERPRETATION OF LINE 2

- Pliocene unconformity
- Miocene unconformity
- Oligocene unconformity
- Jurassic limestone
- Fault

RISERVATO

20 MAG, 1977

203

DATE PROCESSED- MAY/JUNE 1974
 PARTY 722, GEOPHYSICAL SERVICE INTERNATIONAL LIMITED, CROYDON, U.K.