

CANALE DI SICILIA
ZONA C
LAMPEDUSA
PERMESSO C.R. 68.SM

S 352 LINE CL 77-22 1 N

ALL. 3 DATA Novembre 1979 DIS. N° 271/2

REMO N1
(proiettato)

C.R. 68.SM

CL77.19
284

FIELD RECORDING

Ship POLAR BJORN
Field recorder SN 338B filter 118.125
Floating point Sampling 2 ms
Streamer 2350 m Depth 13m
Groups 48/group interval 50ms

Geophones type HC 201n 48/group
4800' Coverage
Energy source VAPORCHOC Depth 6m
Positive acoustic pressure is a negative number on field tape
TORAN positioning

SP 118.125
300m

Boat motion ← Shooting date FEB 9 77

DIGITAL PROCESSING P5

AMPLITUDE RECOVERY Resampling 2164ms
WAPCO Stabilization of vaporchoc signal
MUTE EDITING
DECONVOLUTION 380 ms
Windows 400 2000 ms
1500 3500 ms

VELOCITY ANALYSIS (VA)
RMO CORRECTIONS LINEAR INTERPOLATION
BETWEEN VELOCITY FUNCTIONS
STAGE 4800 %

TIME VARIANT FILTER
TRACE EQUALIZATION
ANALOG DISPLAY

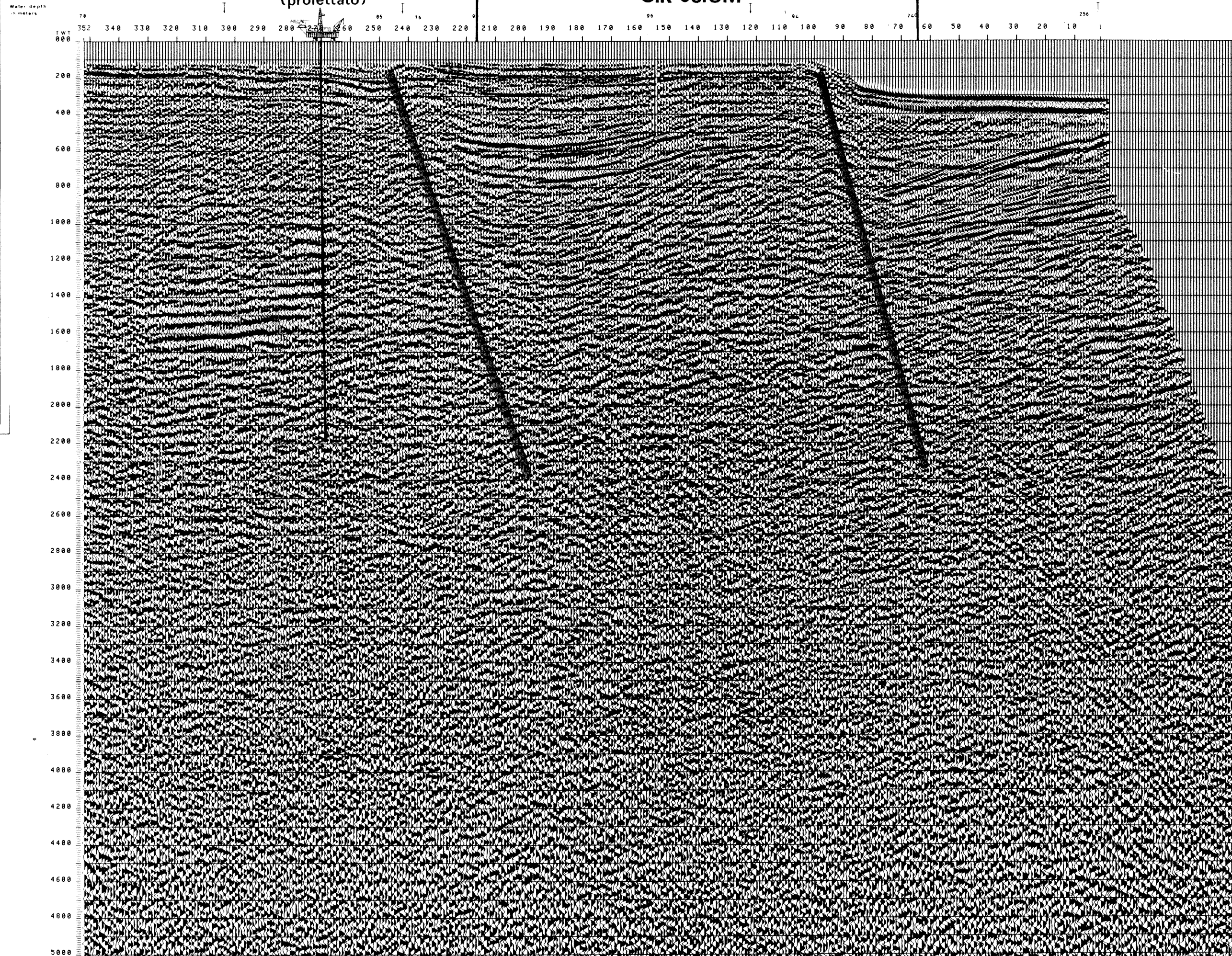
BLACK PEAK REPRESENTS POSITIVE ACOUSTIC PRESSURE

TIME ORIGIN Source and cable depth

200

COMPAGNIE GENERALE DE GEOPHYSIQUE
6, Rue Galvani - 91301 - MASSY - FRANCE

MAY 5 77



CL77-22
FROM SP *FROM SP* *FROM SP* *FROM SP* *FROM SP*
304* 242* 122* 74* 1
TO SP TO SP TO SP TO SP TO SP
352* 242* 122* 74* 2

AV. VEL. *AV. VEL.* *AV. VEL.* *AV. VEL.* *AV. VEL.*
IN M/S* IN M/S* IN M/S* IN M/S* IN M/S*

TWT	000	200	400	600	800	1000	1200	1400	1600	1800	2000	2200	2400	2600	2800	3000	3200	3400	3600	3800	4000	4200	4400	4600	4800	5000
1500	1500	1500	1500	1500	1500	1500	1500	1500	1500	1500	1500	1500	1500	1500	1500	1500	1500	1500	1500	1500	1500	1500	1500	1500	1500	1500
2031	1868	1820	1534	1500																						
2261	2134	1927	1706	1631																						
2563	2481	2168	1830	1796																						
3227	2716	2564	1995	2226																						
3693	3032	2791	2224	2478																						
3757	3202	2954	2476	2675																						
3804	3323	3111	2674	2761																						
3925	3524	3321	2751	2860																						
4033	3685	3485	2867	2938																						
4121	3811	3626	2936	2967																						
4194	3910	3741	2966	2990																						
4256	3994	3838	2990	3010																						
4309	4066	3921	3010	3062																						
4395	4129	3993	3079	3152																						
4395	4182	4059	3140	3212																						
4431	4231	4111	3206	3311																						
4462	4273	4160	3294	3405																						
4491	4311	4205	3383	3489																						
4516	4349	4244	3464	3564																						
4539	4377	4280	3537	3633																						
4560	4405	4315	3604	3695																						
4579	4431	4343	3664	3752																						
4597	4455	4370	3720	3804																						
4613	4477			3851																						

VARIABLE FILTER
XV