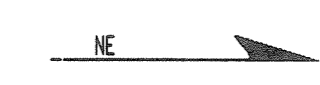


C L E I N S E A G U L L S P A  
 BLOCK CR59 SE  
 LINE 4 SPS 320 TO 560



# SEAGULL SICILY

## LINE 4 SPS 320-560

### 24 FOLD 48 TRACE

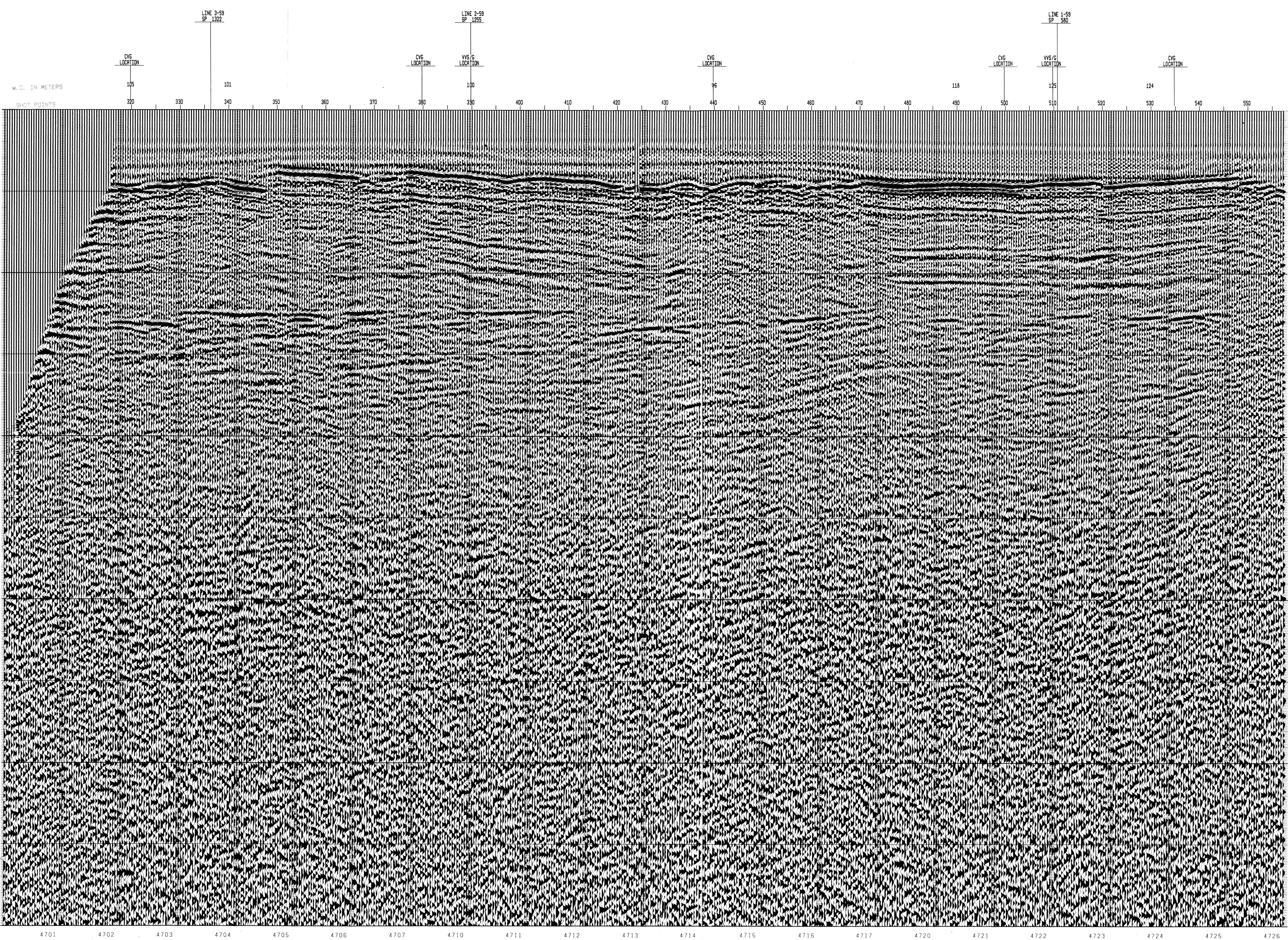
SP	TIME (S)	V-INT
320	4850	4850
330	4850	8133
340	4850	8141
350	4850	8174
360	4850	8182
370	4850	8186
380	4850	8186
390	4850	8186
400	4850	8186
410	4850	8186
420	4850	8186
430	4850	8186
440	4850	8186
450	4850	8186
460	4850	8186
470	4850	8186
480	4850	8186
490	4850	8186
500	4850	8186
510	4850	8186
520	4850	8186
530	4850	8186
540	4850	8186
550	4850	8186
560	4850	8186

SP	TIME (S)	V-INT
325	4850	4850
335	4850	8133
345	4850	8141
355	4850	8174
365	4850	8182
375	4850	8186
385	4850	8186
395	4850	8186
405	4850	8186
415	4850	8186
425	4850	8186
435	4850	8186
445	4850	8186
455	4850	8186
465	4850	8186
475	4850	8186
485	4850	8186
495	4850	8186
505	4850	8186
515	4850	8186
525	4850	8186
535	4850	8186
545	4850	8186
555	4850	8186
565	4850	8186

SP	TIME (S)	V-INT
440	4850	4850
450	4850	8133
460	4850	8141
470	4850	8174
480	4850	8182
490	4850	8186
500	4850	8186
510	4850	8186
520	4850	8186
530	4850	8186
540	4850	8186
550	4850	8186
560	4850	8186

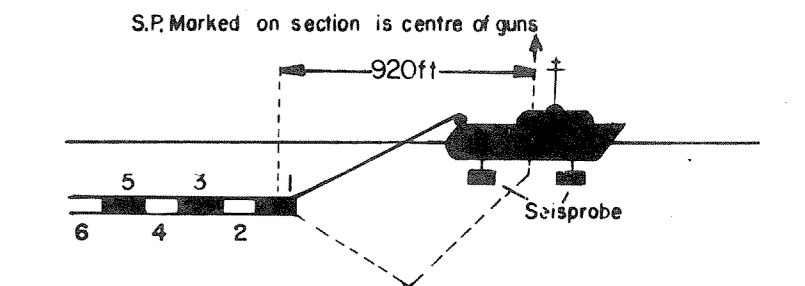
SP	TIME (S)	V-INT
450	4850	4850
460	4850	8133
470	4850	8141
480	4850	8174
490	4850	8182
500	4850	8186
510	4850	8186
520	4850	8186
530	4850	8186
540	4850	8186
550	4850	8186
560	4850	8186

SP	TIME (S)	V-INT
460	4850	4850
470	4850	8133
480	4850	8141
490	4850	8174
500	4850	8182
510	4850	8186
520	4850	8186
530	4850	8186
540	4850	8186
550	4850	8186
560	4850	8186

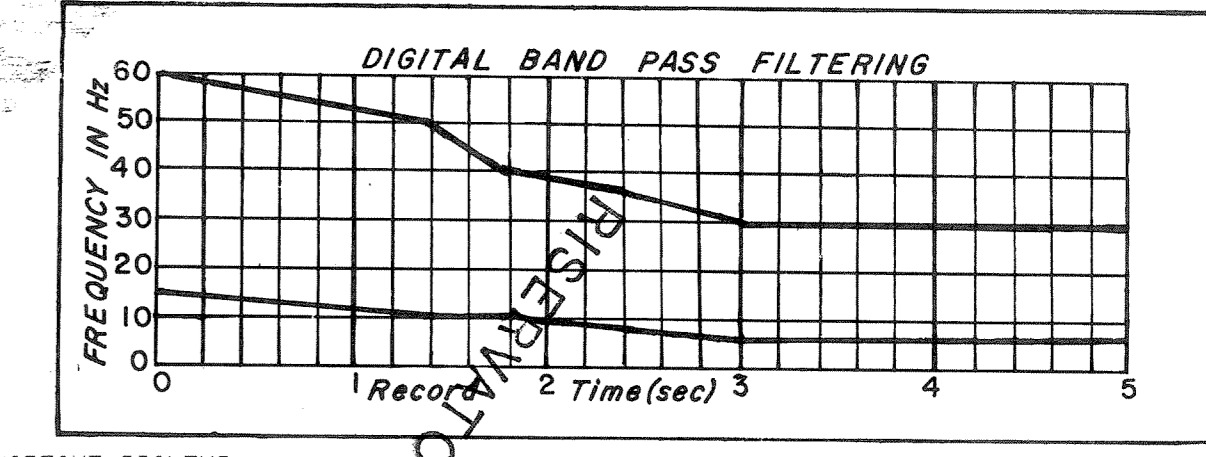


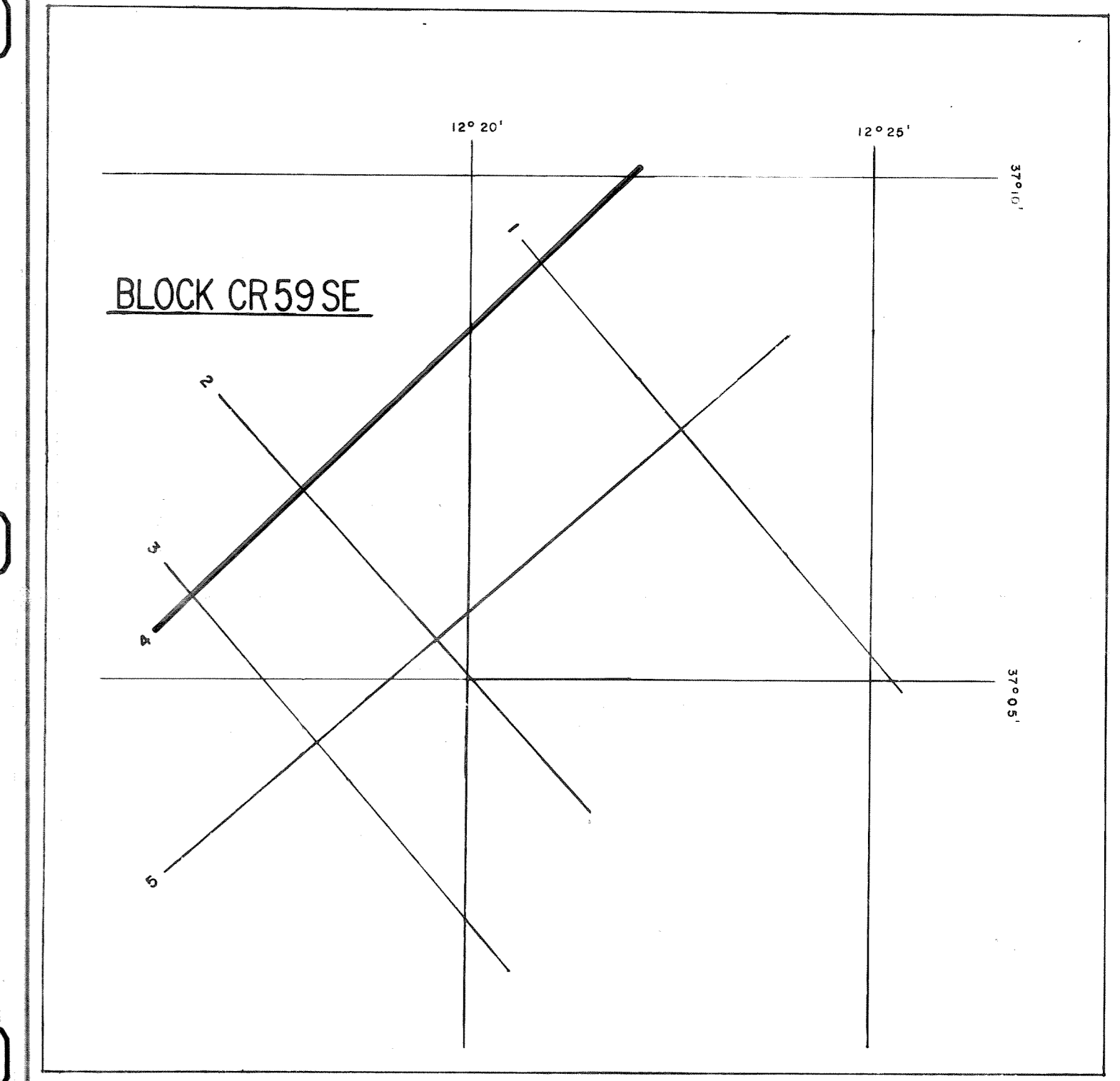
### RECORDING DATA

SHOT BY S.S.L. PARTY 723 BOAT K/R TONDER APRIL 1974  
 INSTRUMENTS- DFS 3 NEARS AND FARS FORMAT CABLE- LENGTH 2400 METRES  
 RECORD LENGTH- 6 SECONDS, 4 MS SAMPLE RATE GEOPHONE GROUPS 48  
 FIELD FILTERS- LOWCUT-8 HZ / SLOPE-18 DB/OCTAVE GEOPHONE ARRAY 30X1.5 M  
 ENERGY SOURCE- ESSO SETSPROBE SEISMOMETER TYPE- MULTIDYNE ACC. CANCELLING  
 ARRAY 4X2 GUNS DEPTH 10-20 METERS GROUP INTERVAL 50 M  
 DEPTH 10 METERS SHOT INTERVAL 50 M  
 COVERAGE- 24 FOLD, 48 TRACE SURVEY- PRIMARY LORAN C  
 TAPE FORMAT- 1/2 INCH 9 TRACK 800 BPT SEGA  
 BOAT DIRECTION- DIRECTION OF INCREASING SHOTPOINTS SECONDARY SAT. NAV.  
 POLARITY- COMPRESSONAL WAVE- POSITIVE IN. ON TAPE, BREAKS UP ON SECTION



### PROCESSING DATA

TRUE AMPLITUDE RECOVERY AND SEISMIC EDIT  
 DECONVOLUTION BEFORE STACK-  
 NON-WHITENING GAPPED  
 3 FILTERS PER TRACE, 228 MS IN LENGTH WITH A 28 MS GAP  
 DESIGN GATE- TRACE 1, 2050 MS TO MAX. TIME  
 TRACE 48, 450 MS TO MAX. TIME  
 24 FOLD 48 TRACE COMMON DEPTH POINT GATHER  
 VELOCITY ANALYSIS- CONSTANT VELOCITY GATHER AND VARIABLE VELOCITY STACK/GATHER  
 STATIC CORRECTION- FOR SHOT AND SEISMOMETER DEPTH 19MS  
 NORMAL MOVEOUT CORRECTION  
 FIRST BREAK SUPPRESSION- SEE TAPER-ON RECORD  
 24 FOLD COMMON DEPTH POINT STACK  
 DECONVOLUTION AFTER STACK-  
 WHITENING  
 1 FILTER PER TRACE, 396 MS IN LENGTH  
 DESIGN GATE- 400 MS TO MAX. TIME  
 TIME VARIANT PASSBAND FILTERING-  
  
 TIME VARIANT SCALING-  
 GATES- 3  
 GATE LENGTH- 1500 MS  
 START TIME- 350 MS



DATE PROCESSED- MAY/JUNE 1974  
 PARTY 722, GEOPHYSICAL SERVICE INTERNATIONAL LIMITED, CROYDON, U.K.