

C L E I M SEAGULL S P A
BLOCK CR59E
LINE 3 SPS 1310 TO 1510

HORIZONTAL SCALE 0 1 2 3 4 5 6 7 8 9 10 METERS

SEAGULL SICILY

LINE 3 SPS 1310 -1510

24 FOLD 48 TRACE

SP- 1310

| TIME | V-RMS | V-INT |
|------|-------|-------|
| 0 | 4850 | 4850 |
| 200 | 4850 | 4850 |
| 475 | 5400 | 6110 |
| 650 | 5600 | 6662 |
| 875 | 5950 | 71022 |
| 1275 | 7800 | 12725 |
| 1450 | 8050 | 8067 |
| 1780 | 8100 | 19877 |
| 5000 | 16950 | |

SP- 1370

| TIME | V-RMS | V-INT |
|------|-------|-------|
| 0 | 4850 | 4850 |
| 200 | 4850 | 4850 |
| 380 | 5500 | 6270 |
| 575 | 5600 | 6742 |
| 725 | 5800 | 6936 |
| 1250 | 7700 | 14444 |
| 1575 | 7925 | 8016 |
| 1875 | 8100 | 14984 |
| 5000 | 16950 | 19865 |

SP- 1395

| TIME | V-RMS | V-INT |
|------|-------|-------|
| 0 | 4850 | 4850 |
| 200 | 4850 | 4850 |
| 375 | 5500 | 6217 |
| 575 | 5700 | 7142 |
| 860 | 5800 | 6936 |
| 1250 | 7600 | 14444 |
| 1575 | 7800 | 8784 |
| 1875 | 8100 | 14444 |
| 5000 | 16950 | 19884 |

SP- 1430

| TIME | V-RMS | V-INT |
|------|-------|-------|
| 0 | 4850 | 4850 |
| 200 | 4850 | 4850 |
| 375 | 5500 | 5814 |
| 575 | 5500 | 6246 |
| 715 | 5600 | 7200 |
| 825 | 5800 | 6714 |
| 1250 | 7700 | 10936 |
| 1550 | 7700 | 10936 |
| 1875 | 8000 | 14984 |
| 5000 | 16775 | 20215 |

SP- 1485

| TIME | V-RMS | V-INT |
|------|-------|-------|
| 0 | 4850 | 4850 |
| 200 | 4850 | 4850 |
| 500 | 5300 | 5380 |
| 700 | 5300 | 6288 |
| 825 | 5300 | 7367 |
| 1275 | 7200 | 8114 |
| 1400 | 7675 | 11443 |
| 1860 | 8000 | 17766 |
| 5000 | 16750 | 20047 |

RECORDING DATA

SHOT BY S.S.L. PARTY 723 BOAT K/R TONDER APRIL 1974

INSTRUMENTS- DFS 3 NEARS AND FARMS FORMAT

RECORD LENGTH- 6 SECONDS, 4 MS SAMPLE RATE

FIELD FILTERS- LOWCUT-8 HZ / SLOPE-18 DB/OCTAVE
HIGHCUT-62 HZ / SLOPE- 72 DB/OCTAVE

ENERGY SOURCE- ESSO SEISPROBE
ARRAY 4X2 GUNS
DEPTH 10 METERS

COVERAGE- 24 FOLD, 48 TRACE

TAPE FORMAT- 1/2 INCH 9 TRACK 800 SPT SEGA

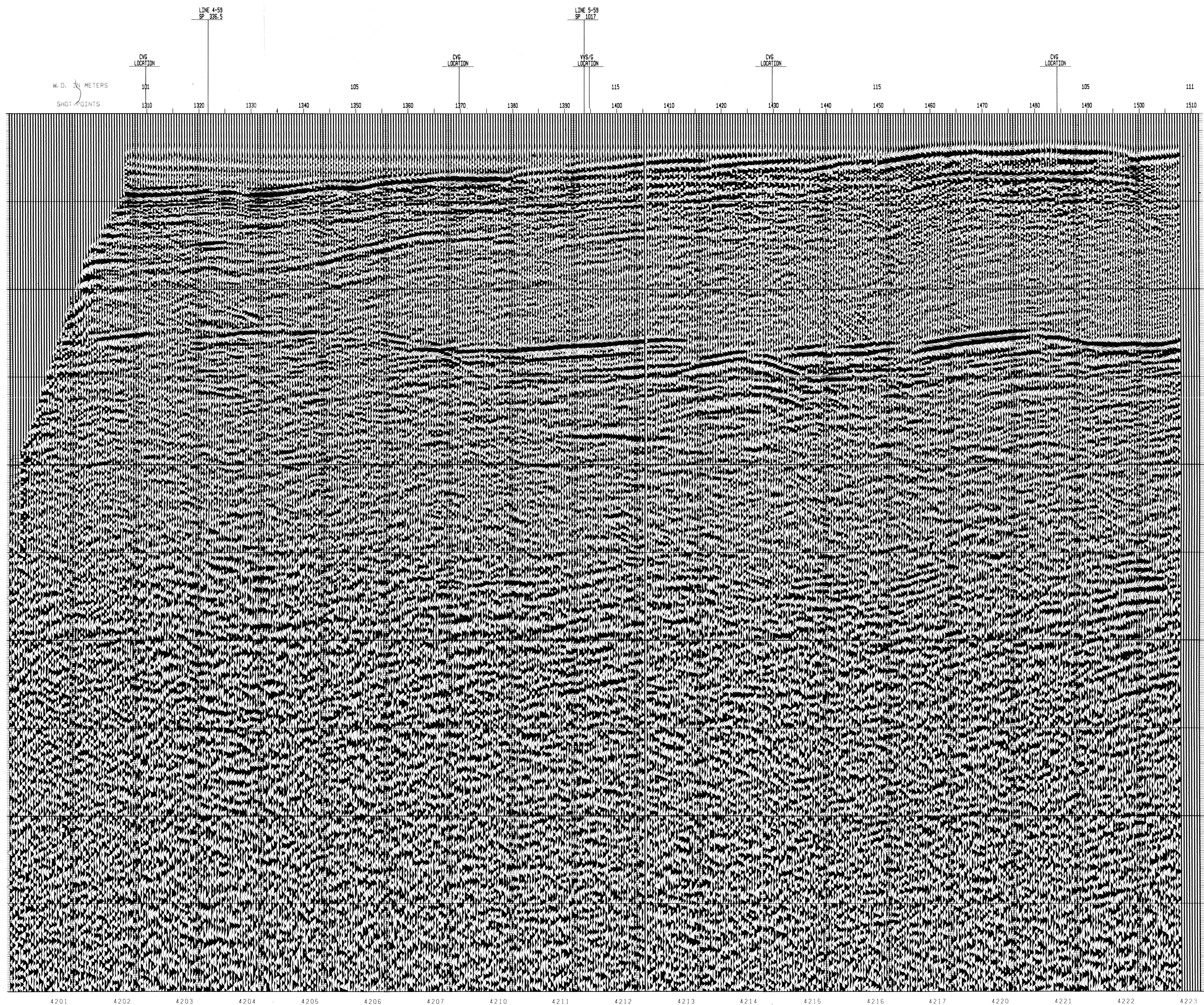
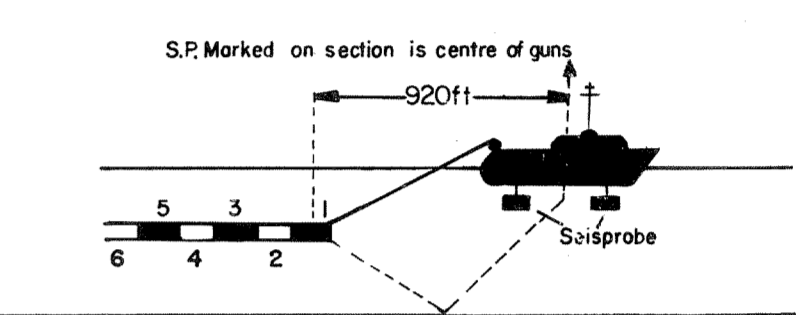
BOAT DIRECTION- DIRECTION OF INCREASING SHOTPOINTS

POLARITY- COMPRESSIONAL WAVE-POSITIVE NO. ON TAPE, BREAKS UP ON SECTION

LENGTH 2400 METRES
GROUPS 48
GEOPHONE ARRAY 30X1.5 M
SEISMOMETER TYPE- MULTIDYNE ACC. CANCELLING
DEPTH 10-20 METERS
SHOT INTERVAL 50 M
GROUP INTERVAL 50 M
PRIMARY LORAN C
SECONDARY SAT. NAV.

BISECT CABLE

16 SET 1974
3086



PROCESSING DATA

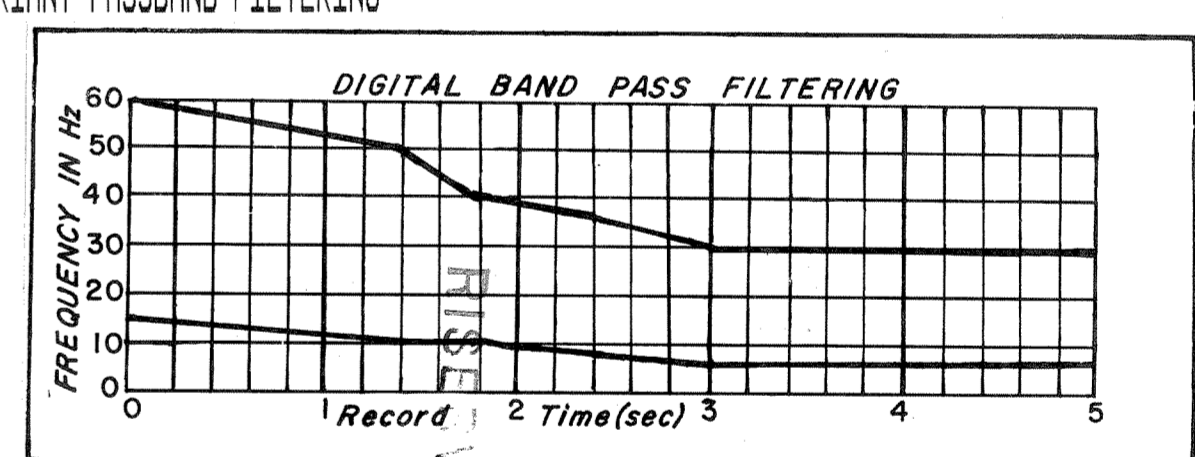
TRUE AMPLITUDE RECOVERY AND SEISMIC EDIT
DECONVOLUTION BEFORE STACK-

NON-WHITENING GAPPED
3 FILTERS PER TRACE, 228 MS IN LENGTH WITH A 28 MS GAP
DESIGN GATE- TRACE 1, 2050 MS TO MAX. TIME
TRACE 48, 450 MS TO MAX. TIME

24 FOLD 48 TRACE COMMON DEPTH POINT GATHER
VELOCITY ANALYSIS- CONSTANT VELOCITY GATHER AND VARIABLE VELOCITY STACK/GATHER
STATIC CORRECTION- FOR SHOT AND SEISMOMETER DEPTH 19MS
NORMAL MOVEOUT CORRECTION
FIRST BREAK SUPPRESSION- SEE TAPER-ON RECORD
24 FOLD COMMON DEPTH POINT STACK
DECONVOLUTION AFTER STACK-

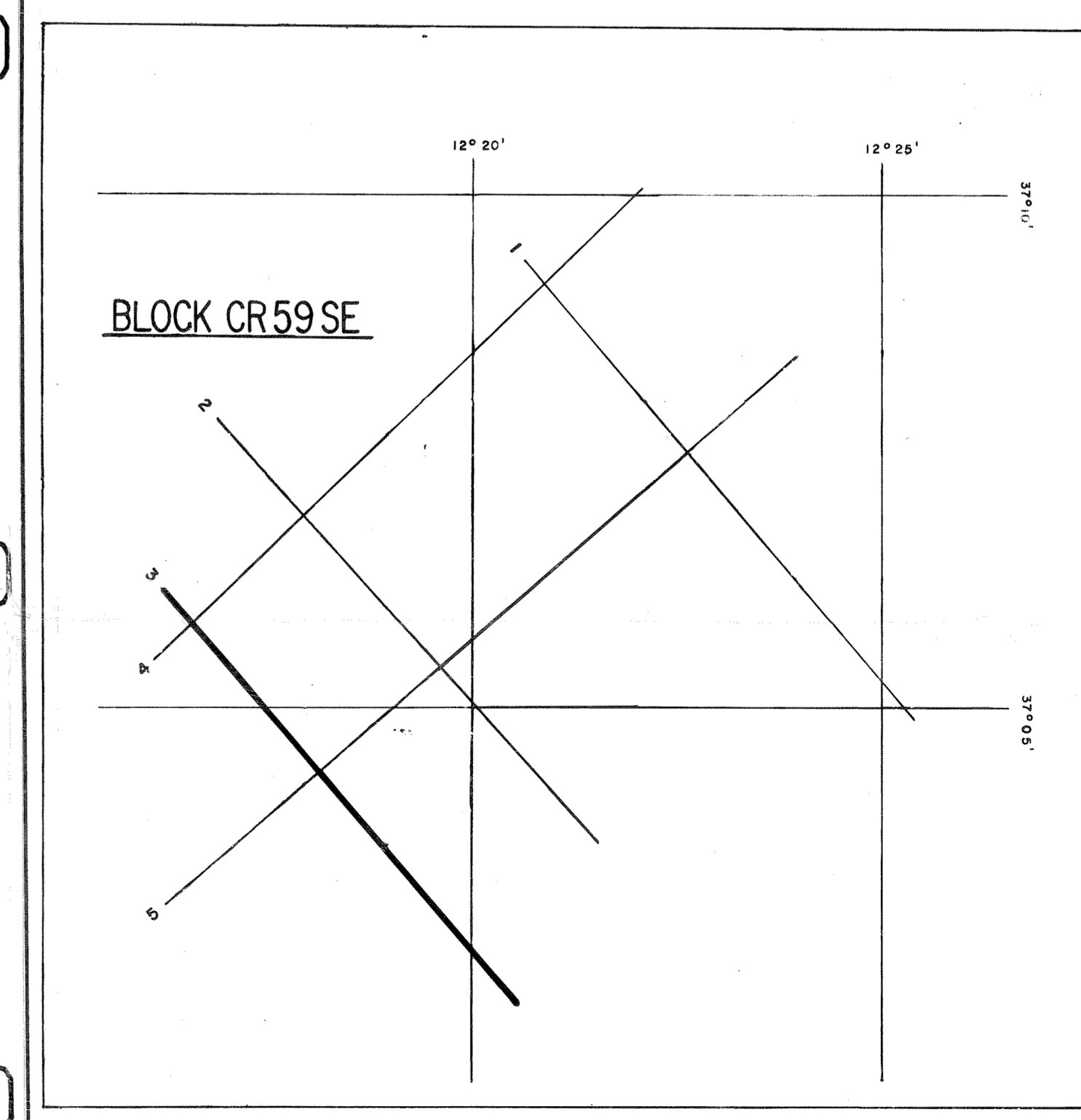
WHITENING
1 FILTER PER TRACE, 396 MS IN LENGTH
DESIGN GATE-400 MS TO MAX. TIME

TIME VARIANT PASSBAND FILTERING-



TIME VARIANT SCALING-

GATES-
GATE LENGTH- 1500 MS
START TIME- 350 MS



DATE PROCESSED- MAY/JUNE 1974

PARTY 722, GEOPHYSICAL SERVICE INTERNATIONAL LIMITED, CROYDON, U.K.