

C L E I M SEAGULL S P A  
BLOCK CR59SE  
LINE 2 SPS 1100 TO 1300

SE

HORIZONTAL SCALE 0 10 20 30 40 50 60 70 80 90 100 METERS

# SEAGULL SICILY

## LINE 2 SPS 1100-1300

### 24 FOLD 48 TRACE

SEAGULL CARBURI  
18 SET. 1978  
3686

| SP-1794 | SP-1795 |
|---------|---------|
| 0       | 0       |
| 215     | 4850    |
| 400     | 5225    |
| 550     | 5950    |
| 675     | 6125    |
| 1050    | 8200    |
| 1300    | 7640    |
| 1400    | 8100    |
| 1800    | 8800    |
| 5000    | 16850   |

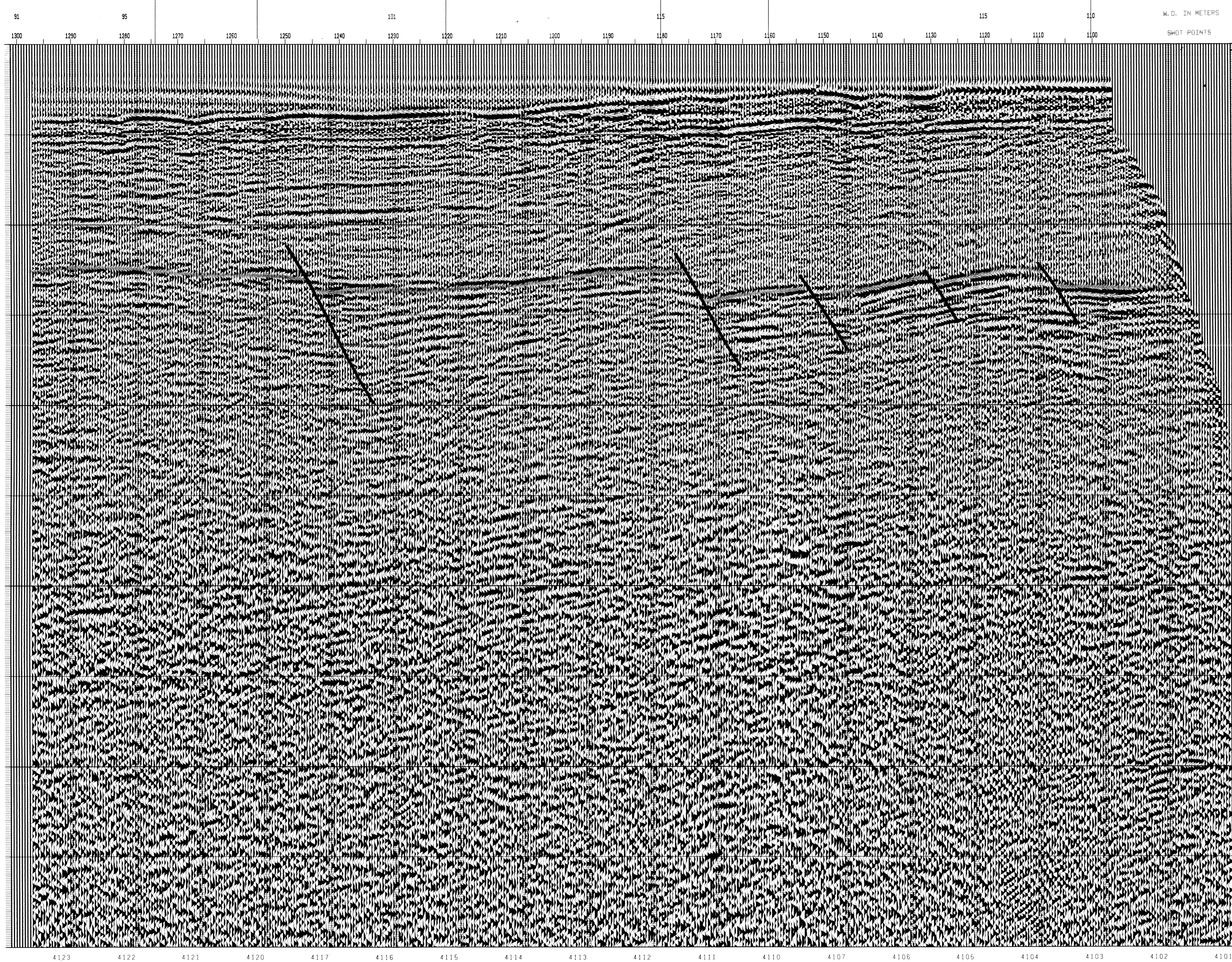
| SP-1796 | SP-1797 |
|---------|---------|
| 0       | 0       |
| 200     | 4650    |
| 410     | 5400    |
| 640     | 5950    |
| 850     | 6300    |
| 1080    | 6800    |
| 1200    | 7900    |
| 1500    | 8150    |
| 1800    | 8800    |
| 5000    | 16775   |

| SP-1100 | SP-1101 |
|---------|---------|
| 0       | 0       |
| 210     | 4850    |
| 475     | 5250    |
| 750     | 5600    |
| 1000    | 5900    |
| 1200    | 6400    |
| 1375    | 7200    |
| 1500    | 7450    |
| 1850    | 8100    |
| 5000    | 16825   |

| SP-1102 | SP-1103 |
|---------|---------|
| 0       | 0       |
| 220     | 4850    |
| 475     | 5300    |
| 750     | 5600    |
| 1000    | 5900    |
| 1200    | 6700    |
| 1400    | 7750    |
| 1500    | 7900    |
| 1750    | 8650    |
| 5000    | 16800   |

LINE 4-99  
SP 380

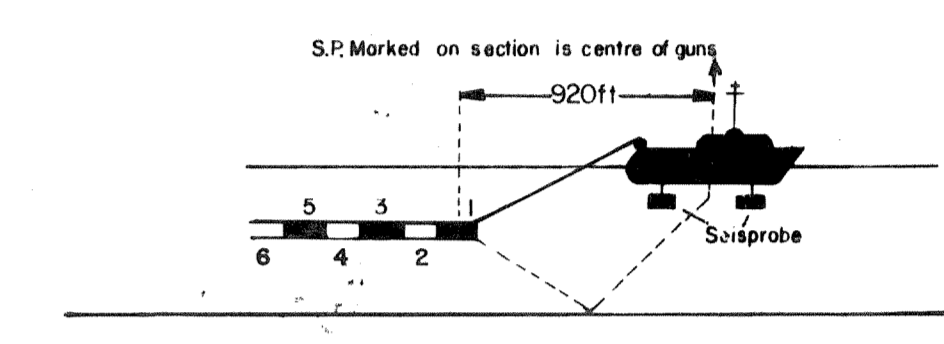
LINE 5-99  
SP 381



### RECORDING DATA

SHOT BY S.S.L. PARTY 723 BOAT K/R TONDER APRIL 1974  
 INSTRUMENTS- DFS 3 NEARS AND FARMS FORMAT  
 RECORD LENGTH- 6 SECONDS, 4 MS SAMPLE RATE  
 FIELD FILTERS- LOWCUT-8 HZ / SLOPE-18 DB/OCTAVE  
 HIGHCUT-62 HZ / SLOPE- 72 DB/OCTAVE  
 ENERGY SOURCE- ESSO SEISPROBE  
 ARRAY 4X2 GUNS  
 DEPTH 10 METERS  
 COVERAGE- 24 FOLD, 48 TRACE  
 TAPE FORMAT- 1/2 INCH 9 TRACK 800 BPI SEGA  
 BOAT DIRECTION- DIRECTION OF INCREASING SHOTPOINTS  
 POLARITY- COMPRESSIONAL WAVE- POSITIVE NO. ON TAPE; BREAKS UP ON SECTION

LENGTH- 2400 METRES  
 GROUPS 48  
 GEOPHONE ARRAY 30X1.5 M  
 SEISMOMETER TYPE- MULTIDYNE ACC. CANCELLING  
 DEPTH 10-20 METERS  
 GROUP INTERVAL 50 M  
 SHOT INTERVAL 50 M  
 PRIMARY LORAN C  
 SECONDARY SAT. NAV.

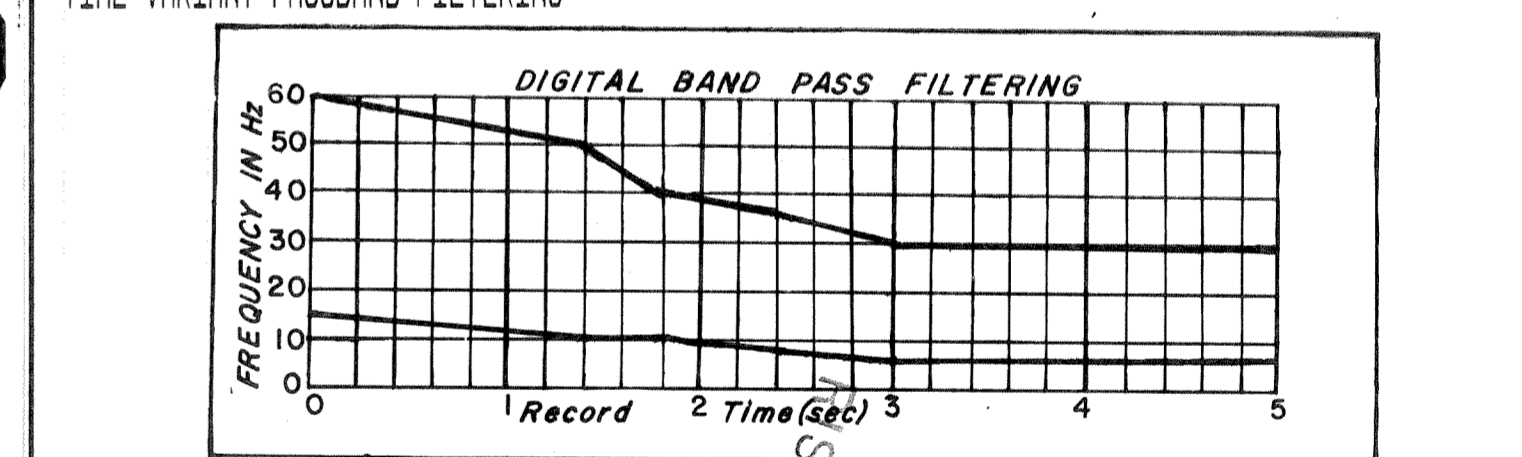


### PROCESSING DATA

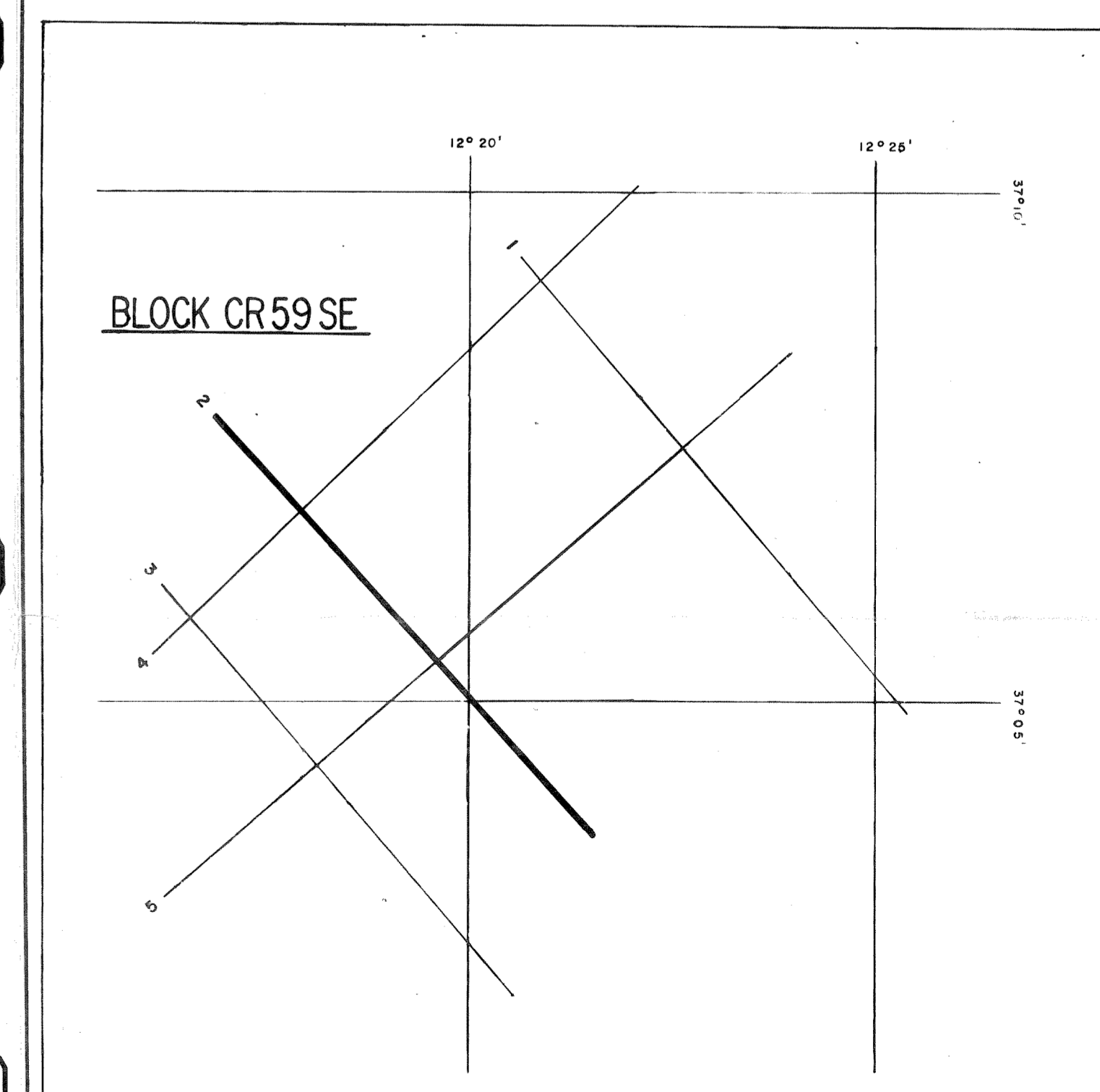
TRUE AMPLITUDE RECOVERY AND SEISMIC EDIT  
 DECONVOLUTION BEFORE STACK-  
 NON-WHITENING GAPPED  
 3 FILTERS PER TRACE, 228 MS IN LENGTH WITH A 28 MS GAP  
 DESIGN GATE- TRACE 1, 2050 MS TO MAX. TIME  
 TRACE 48, 450 MS TO MAX. TIME

24 FOLD 48 TRACE COMMON DEPTH POINT GATHER  
 VELOCITY ANALYSIS- CONSTANT VELOCITY GATHER AND VARIABLE VELOCITY STACK/GATHER  
 STATIC CORRECTION- FOR SHOT AND SEISMOMETER DEPTH 19 MS  
 NORMAL MOVEOUT CORRECTION  
 FIRST BREAK SUPPRESSION- SEE TAPER-ON RECORD  
 24 FOLD COMMON DEPTH POINT STACK  
 DECONVOLUTION AFTER STACK-

WHITENING  
 1 FILTER PER TRACE, 396 MS IN LENGTH  
 DESIGN GATE- 400 MS TO MAX. TIME



TIME VARIANT SCALING-  
 GATES- 3  
 GATE LENGTH- 1500 MS  
 START TIME- 350 MS



DATE PROCESSED- MAY/JUNE 1974  
 PARTY 722, GEOPHYSICAL SERVICE INTERNATIONAL LIMITED, CROYDON, U.K.