

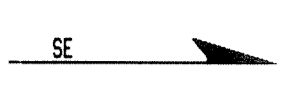
# SEAGULL SICILY

## LINE 1 SPS 570-780

### 24 FOLD 48 TRACE



C.L.E.M. SEAGULL S.P.A.  
BLOCK CROSS  
LINE 1 SPS 570 TO 780

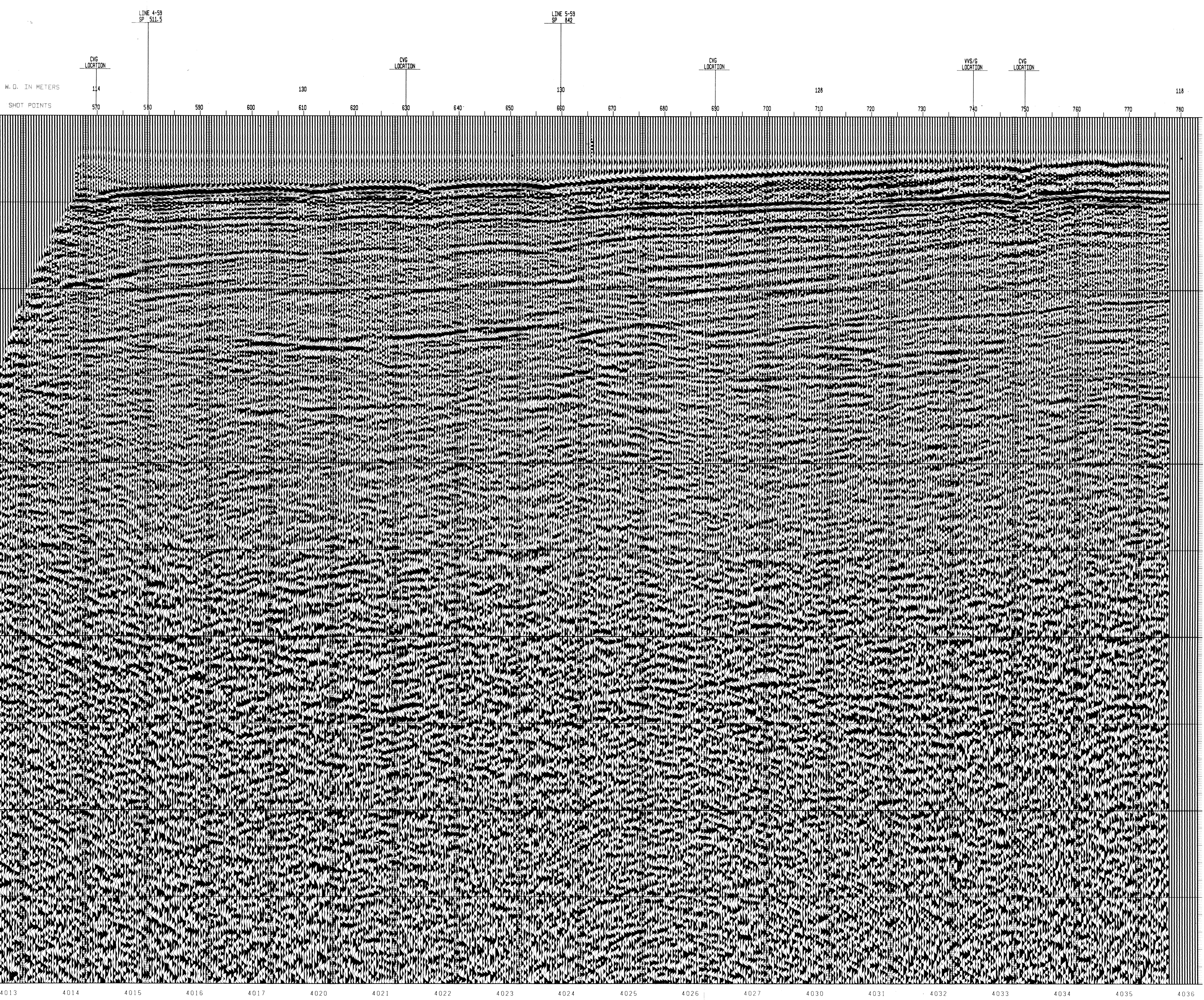


SP- 570	SP- 580
LINE V-PNS V-INT	LINE V-PNS V-INT
0 4850 4850	0 4850 4850
200 4850 5016	200 4850 5016
500 5450 5853	500 5550 5946
800 5750 6553	800 5850 6817
1100 6050 7020	1100 6150 7090
1400 6350 7387	1400 6450 7461
1700 6650 7854	1700 6750 7934
2000 6950 8321	2000 7050 8404
2300 7250 8788	2300 7350 8874
2600 7550 9255	2600 7650 9344
2900 7850 9722	2900 7950 9814
3200 8150 10189	3200 8250 10284
3500 8450 10656	3500 8550 10754
3800 8750 11123	3800 8850 11224
4100 9050 11590	4100 9150 11694
4400 9350 12057	4400 9450 12164
4700 9650 12524	4700 9750 12634
5000 9950 12991	5000 10050 13104

SP- 690	SP- 687
LINE V-PNS V-INT	LINE V-PNS V-INT
0 4850 4850	0 4850 4850
225 4850 5016	225 4850 5016
500 5450 5853	500 5550 5946
800 5750 6553	800 5850 6817
1100 6050 7020	1100 6150 7090
1400 6350 7387	1400 6450 7461
1700 6650 7854	1700 6750 7934
2000 6950 8321	2000 7050 8404
2300 7250 8788	2300 7350 8874
2600 7550 9255	2600 7650 9344
2900 7850 9722	2900 7950 9814
3200 8150 10189	3200 8250 10284
3500 8450 10656	3500 8550 10754
3800 8750 11123	3800 8850 11224
4100 9050 11590	4100 9150 11694
4400 9350 12057	4400 9450 12164
4700 9650 12524	4700 9750 12634
5000 9950 12991	5000 10050 13104

SP- 690	SP- 690
LINE V-PNS V-INT	LINE V-PNS V-INT
0 4850 4850	0 4850 4850
225 4850 5016	225 4850 5016
500 5450 5853	500 5550 5946
800 5750 6553	800 5850 6817
1100 6050 7020	1100 6150 7090
1400 6350 7387	1400 6450 7461
1700 6650 7854	1700 6750 7934
2000 6950 8321	2000 7050 8404
2300 7250 8788	2300 7350 8874
2600 7550 9255	2600 7650 9344
2900 7850 9722	2900 7950 9814
3200 8150 10189	3200 8250 10284
3500 8450 10656	3500 8550 10754
3800 8750 11123	3800 8850 11224
4100 9050 11590	4100 9150 11694
4400 9350 12057	4400 9450 12164
4700 9650 12524	4700 9750 12634
5000 9950 12991	5000 10050 13104

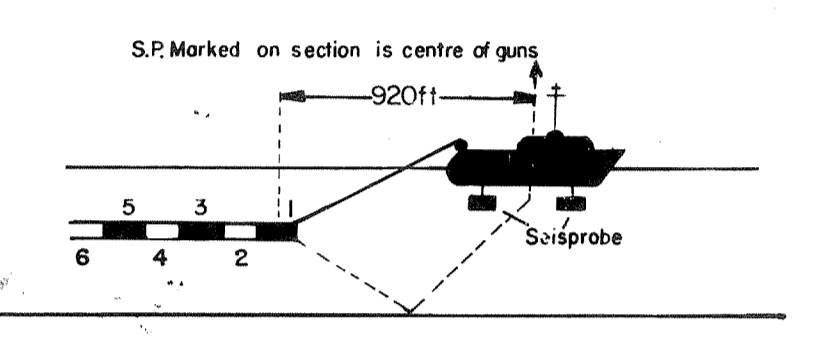
SP- 740	SP- 740
LINE V-PNS V-INT	LINE V-PNS V-INT
0 4850 4850	0 4850 4850
250 4850 5016	250 4850 5016
500 5450 5853	500 5550 5946
750 5750 6553	750 5850 6817
1000 6050 7020	1000 6150 7090
1250 6350 7387	1250 6450 7461
1500 6650 7854	1500 6750 7934
1750 6950 8321	1750 7050 8404
2000 7250 8788	2000 7350 8874
2250 7550 9255	2250 7650 9344
2500 7850 9722	2500 7950 9814
2750 8150 10189	2750 8250 10284
3000 8450 10656	3000 8550 10754
3250 8750 11123	3250 8850 11224
3500 9050 11590	3500 9150 11694
3750 9350 12057	3750 9450 12164
4000 9650 12524	4000 9750 12634
4250 9950 12991	4250 10050 13104



### RECORDING DATA

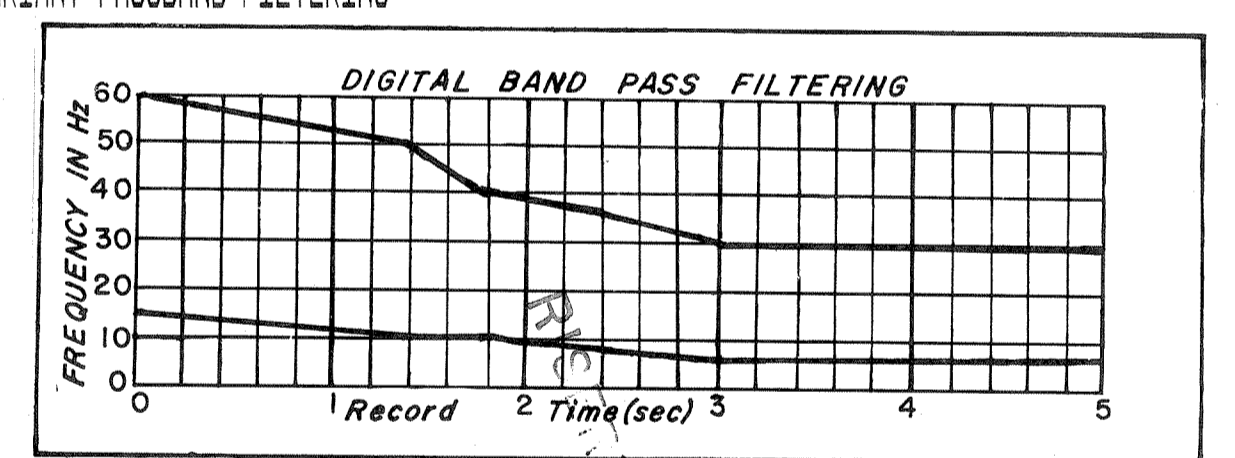
SHOT BY S.S.L. PARTY 723 BOAT K/R TONDER APRIL 1974  
 INSTRUMENTS- DFS 3 NEARS AND FARS FORMAT CABLE- LENGTH 2400 METRES  
 RECORD LENGTH- 6 SECONDS, 4 MS SAMPLE RATE GROUPS 48  
 FIELD FILTERS- LOWCUT-8 HZ / SLOPE-18 DB/OCTAVE GEOPHONE ARRAY 30X1.5 M  
 ENERGY SOURCE- ESSO SEISPROBE SEISMOMETER TYPE- MULTIDYNE ACC. CANCELLING  
 ARRAY 4X2 GUNS DEPTH 10 METERS GROUP INTERVAL 50 M  
 SURVEY- POLARITY- DIRECTION OF INCREASING SHOTPOINTS SECONDARY SAT. NAV.  
 COMPRESSIONAL WAVE-POSITIVE NO. ON TAPE, BREAKS UP ON SECTION

RISERVATO

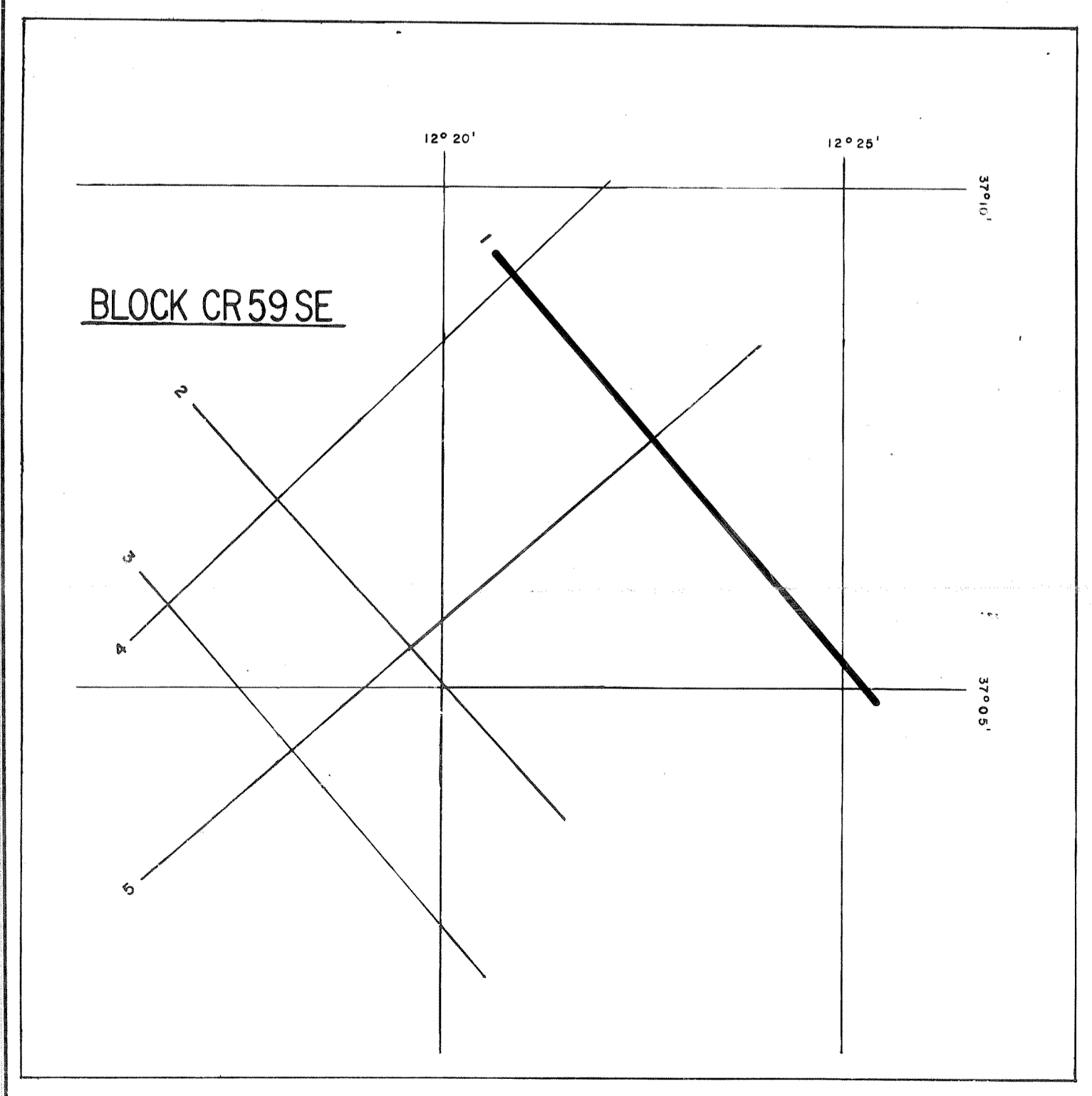


### PROCESSING DATA

TRUE AMPLITUDE RECOVERY AND SEISMIC EDIT  
 DECONVOLUTION BEFORE STACK-  
 NON-WHITENING GAPPED  
 3 FILTERS PER TRACE, 228 MS IN LENGTH WITH A 28 MS GAP  
 DESIGN GATE- TRACE 1, 2050 MS TO MAX. TIME  
 TRACE 48, 450 MS TO MAX. TIME  
 24 FOLD 48 TRACE COMMON DEPTH POINT GATHER  
 VELOCITY ANALYSIS- CONSTANT VELOCITY GATHER AND VARIABLE VELOCITY STACK/GATHER  
 STATIC CORRECTION- FOR SHOT AND SEISMOMETER DEPTH 19 MS  
 NORMAL MOVEOUT CORRECTION- SEE TAPER-ON RECORD  
 FIRST BREAK SUPPRESSION- 24 FOLD COMMON DEPTH POINT STACK  
 DECONVOLUTION AFTER STACK-  
 WHITENING  
 1 FILTER PER TRACE, 396 MS IN LENGTH  
 DESIGN GATE-400 MS TO MAX. TIME  
 TIME VARIANT PASSBAND FILTERING-



TIME VARIANT SCALING-  
 GATES- 3  
 GATE LENGTH- 1500 MS  
 START TIME- 350 MS



DATE PROCESSED- MAY/JUNE 1974