

127.11.77

AGIP

OFFSHORE ITALY
SICILY CHANNEL

S

788

LINE CL74.16

N

100

DIGITAL PROCESSING P5

DP elevation 0

STACK 4800 %

Boat motion ←

56

Date: JAN -20.75

Checked:

PROCESSING

1 AMPLITUDE RECOVERY

2 VAPCO (Division by vaporchoc signature)

3 MUTES

4 DECONVOLUTION 160 ms
windows 100-1200ms
1200-2400ms

5 VELOCITY ANALYSIS (VA)

6 NMO CORRECTIONS
(LINEAR INTERPOLATION
BETWEEN VELOCITY FUNCTIONS)

7 STACK 4800%

8 TIME VARIANT FILTER

9 TRACE EQUALIZATION

10 ANALOG DISPLAY

FIELD RECORDING

Ship: DAUPHIN DE CHERBOURG

Field recorder: SN328 N. 17 filter: 1/8-80
binary gain - sampling: 4 ms

Streamer: 2400 m (Depth: 20 m)
groups: 48 (group interval: 50 m)

Geophones type: HC 201 n. 48 / group

48 Fold coverage

Energy source: VAPORCHOC

SP tr 1 Streamer tr 48
315m

COMPAGNIE GENERALE
DE GEOPHYSIQUE
& P. GEOL. 9100 MASSY (FRANCE)

SEZIONE IDROCARBURI
di NAPOLI
12 GIU. 1976
Sez. Posiz.

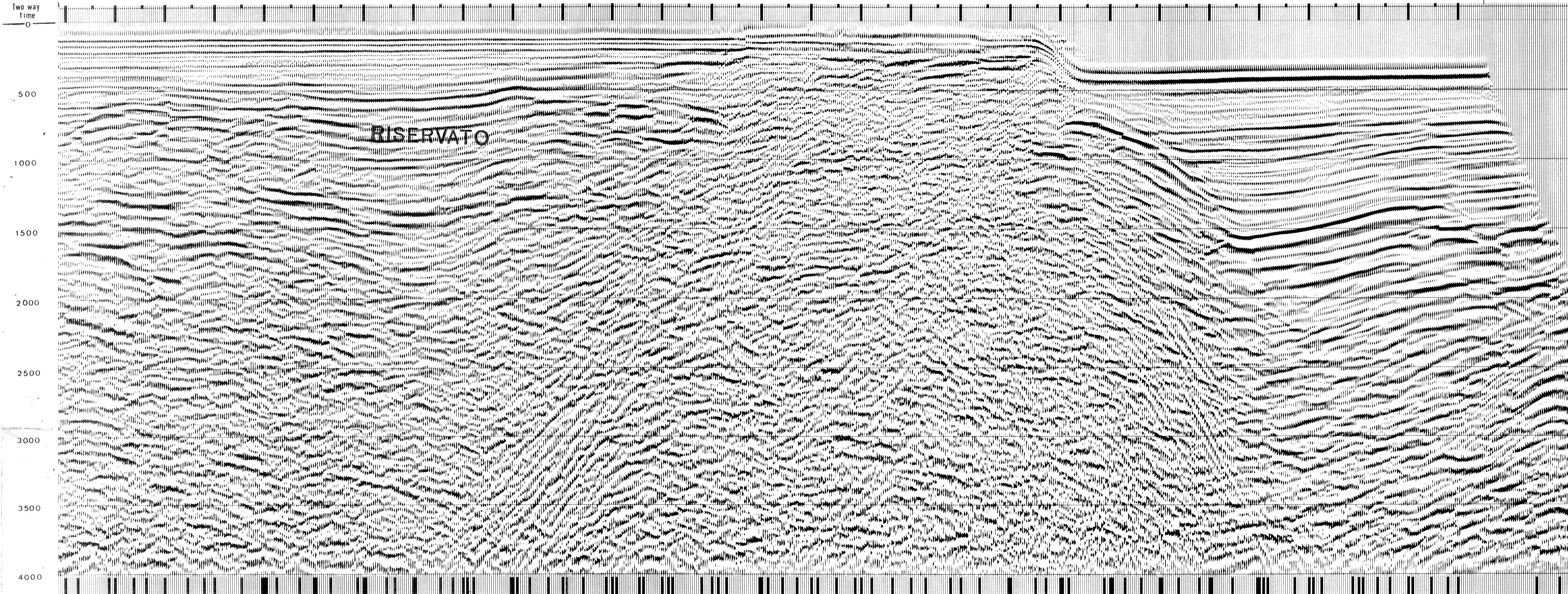
CL7413 505

CL7411 692

CL7409 466

CL7407 393

Water depth in meters 77 79 73 79 72 73 628 604 580 556 532 588 484 460 436 412 388 364 340 316 292 268 244 220 196 172 148 124 238 100



Two way time	788	772	748	724	700	676	652	628	604	580	556	532	508	484	460	436	412	388	364	340	316	292	268	244	220	196	172	148	124	238	100			
400																																		
800																																		
1200																																		
1600																																		
2000																																		
2400																																		
2800																																		
3200																																		
3600																																		
4000																																		

