

YC-132

| TIME | VELOCITY | TIME | VELOCITY |
|------|----------|------|----------|
| 0200 | 4900 | 0160 | 4900 |
| 0600 | 7200 | 0720 | 7200 |
| 1320 | 8200 | 1320 | 9200 |
| 1560 | 9700 | 1680 | 10400 |
| 2200 | 10800 | 2000 | 11000 |
| 5000 | 17000 | 2320 | 12000 |

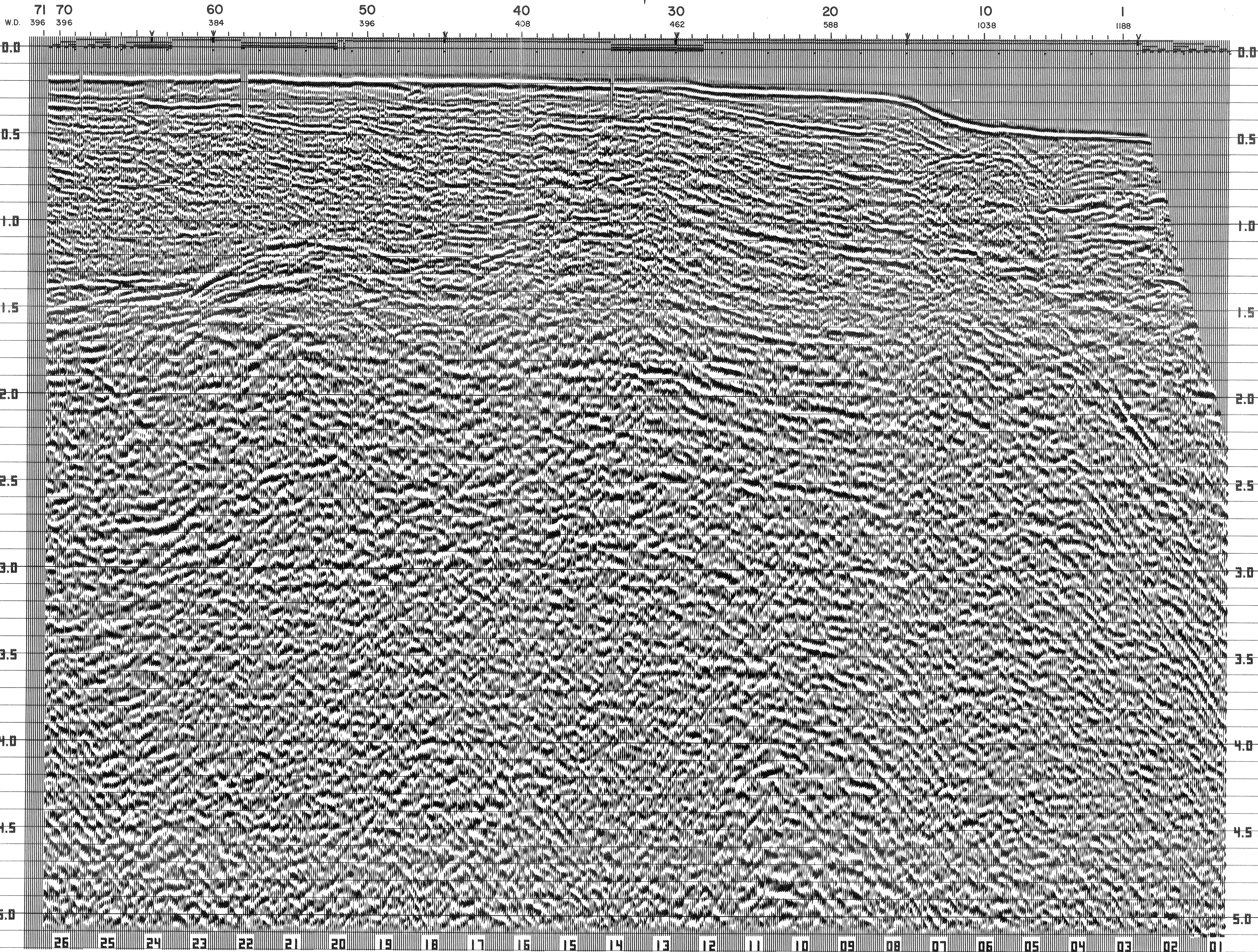
| TIME | VELOCITY | TIME | VELOCITY |
|------|----------|------|----------|
| 0160 | 5000 | 0400 | 5800 |
| 0680 | 7000 | 0800 | 7000 |
| 1200 | 8200 | 1440 | 9600 |
| 1880 | 10500 | 2400 | 11000 |
| 5000 | 17000 | 5000 | 17000 |

| TIME | VELOCITY | TIME | VELOCITY |
|------|----------|------|----------|
| 0300 | 4900 | 0520 | 6000 |
| 0980 | 7000 | 1080 | 8000 |
| 1440 | 9600 | 1920 | 10200 |
| 2400 | 11000 | 3160 | 13400 |
| 5000 | 17000 | 5000 | 17000 |

| TIME | VELOCITY | TIME | VELOCITY |
|------|----------|------|----------|
| 0280 | 5000 | 0440 | 6000 |
| 0720 | 6500 | 1240 | 7900 |
| 1440 | 8400 | 1860 | 10500 |
| 2360 | 11500 | 3160 | 13400 |
| 5000 | 17000 | 5000 | 17000 |

| TIME | VELOCITY | TIME | VELOCITY |
|------|----------|------|----------|
| 0460 | 4800 | 0600 | 5600 |
| 1080 | 7400 | 2120 | 12000 |
| 2840 | 13700 | 5000 | 17000 |

YC-123
S.P. 28



LINE : YC-132

S.P. 71 TO S.P. 1

DATUM PLANE : SEA LEVEL

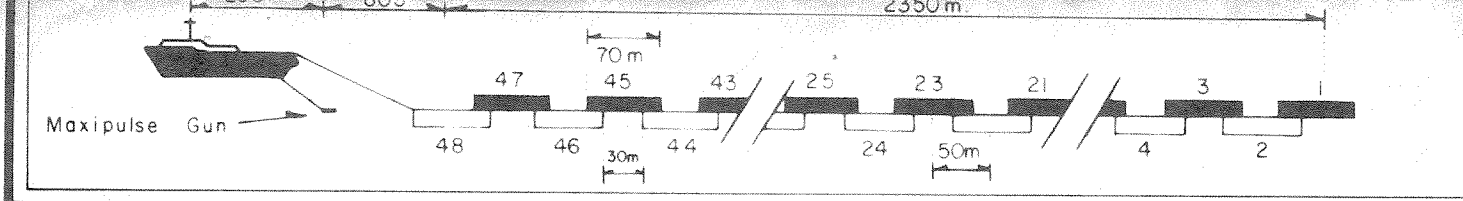


Legend
 V = Velocity Control Point
 ■ = Velocity Analysis
 W.D. = Water Depths in Feet 2400% DBAS TVF

SEAGULL EXPL. ITALY AREA: Offshore SICILY

Shot by WESTERN P- 63 DEC. 1973
 Processed WESTERN DIGITAL CENTER LONDON FEB. 1974
 Contract N°: 809 Reel N°: 72101B

| Recording Data | |
|----------------|--|
| BOAT | KAREN BRAVO PRIMARY NAVIGATION SYSTEM SHORAN IX BACK-UP NAVIGATION SYSTEM SATNAV SHOTPOINT INTERVAL 200 m. POSTPLOTED POINT ON MAP ANTENNA |
| SOURCE | MAXIPULSE GUN DEPTH 45 Ft CHARGE SIZE 1/2 lb POP INTERVAL 50 m. AMPLIFIER DDS 088 |
| INSTRUMENTS | FILTER Hi 62 Lo 6 RECORD LENGTH 6 Sec SAMPLE RATE 4 ms |
| CABLE | LENGTH 2400m MULTIDYNE OVERLAPPING 48 NO OF GROUPS 32 GROUP TAPERED ARRAY SEISMOMETERS 70m GROUP LENGTH 70m GROUP INTERVAL 50m CABLE DEPTH 40 - 45 Ft |



Processing Sequence and Parameters

| | | |
|-------------------|---|---|
| EDIT DEBUBBLE DBS | TYPE WINDOW LENGTH OVERLAP LENGTH AUTO CORR LENGTH OPERATOR MIN PREDICTION LAG | MIN PHASE INVERSE FILTER 2 EQUAL LENGTH ZONES PER TRACE 20 OF WINDOW LENGTH |
| NMO | STACK 2400 | |
| DAS | TYPE (1) MIN PHASE INVERSE FILTER (2) PREDICTIVE 2 ITERATIONS WINDOW LENGTH 1600ms 2600ms 1600ms OVERLAP 400ms 400ms 320ms LENGTH AUTO CORR 300ms 300ms 360ms LENGTH OPERATOR 268ms 268ms 1 1/2 CYCLE MIN PREDICTION LAG 32ms 40ms 120ms | |
| TVF | SEC Lo Hz Slope Hi Hz Slope db 0-0.4 12 24 40 24 0.4-0.8 8 24 35 24 0.8-1.6 5 24 30 24 1.6-5.0 5 24 20 24 | |

18ms GUN AND CABLE DEPTH CORRECTIONS MADE

PLAYBACK SCALES HORIZONTAL 1" 600m VERTICAL 3.75" Sec

