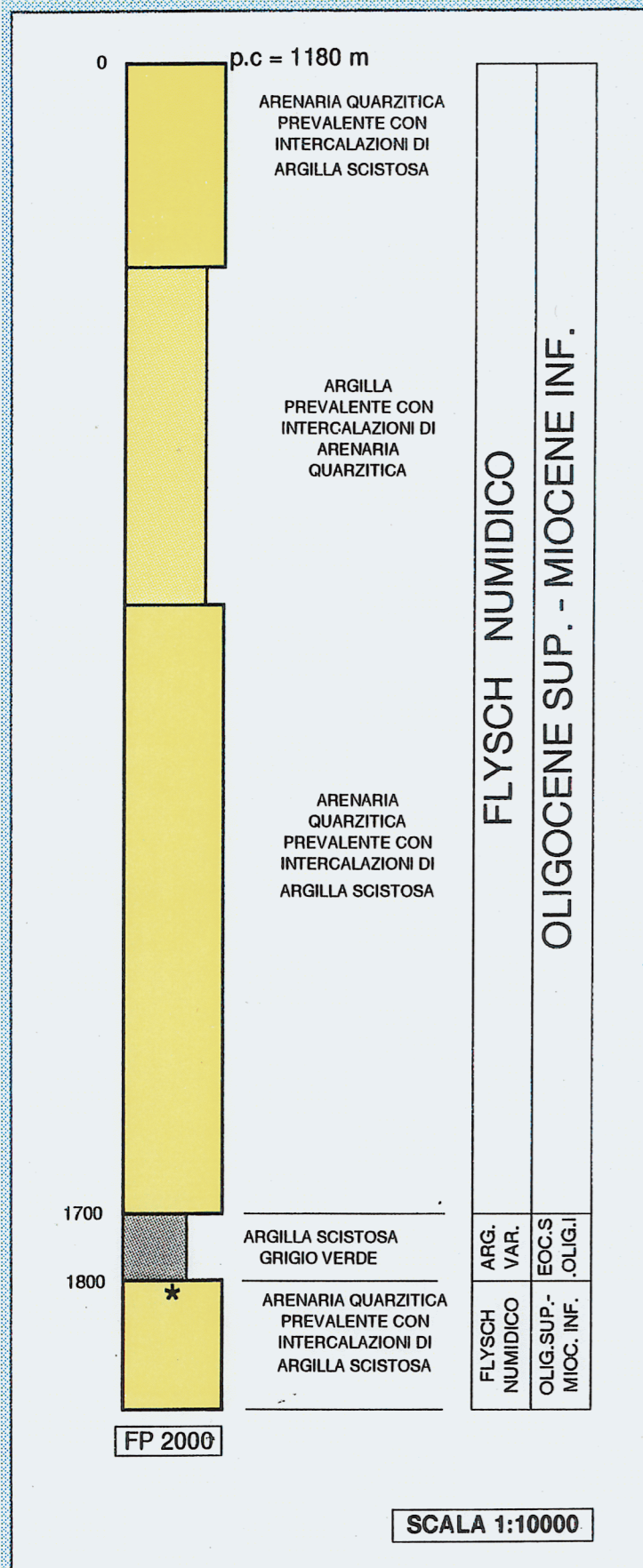
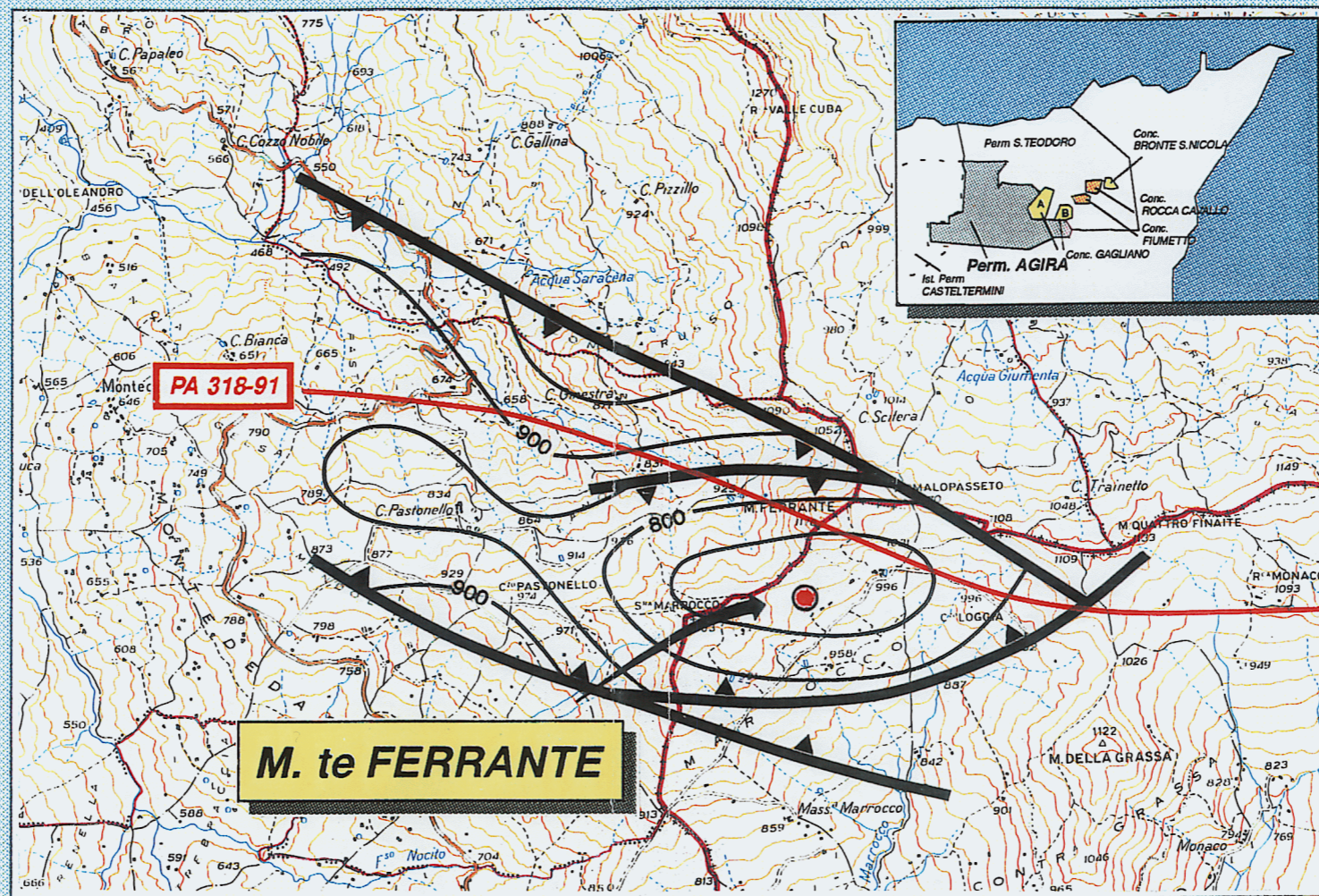




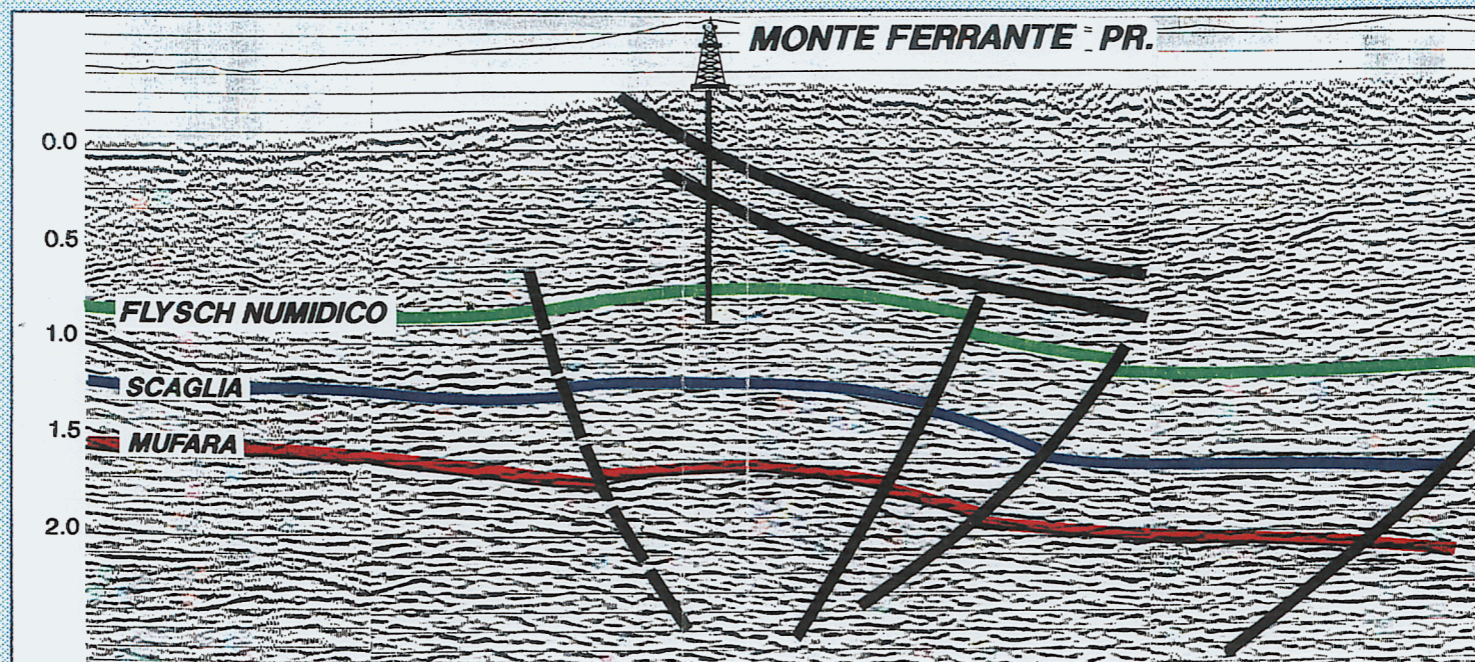
Profilo litostratigrafico previsto



Isocrone Top obiettivo



Linea PA 318 - 91



OBIETTIVO: Quarzareniti
 FORMAZIONE: Flysch Numidico
 ETA': Olig. S. - Mioc. I.

IDROCARBURI PREVISTI : GAS

FACILITIES IN AREA:
 Centrale Gas BRONTE
 Distanza : 13 Km

