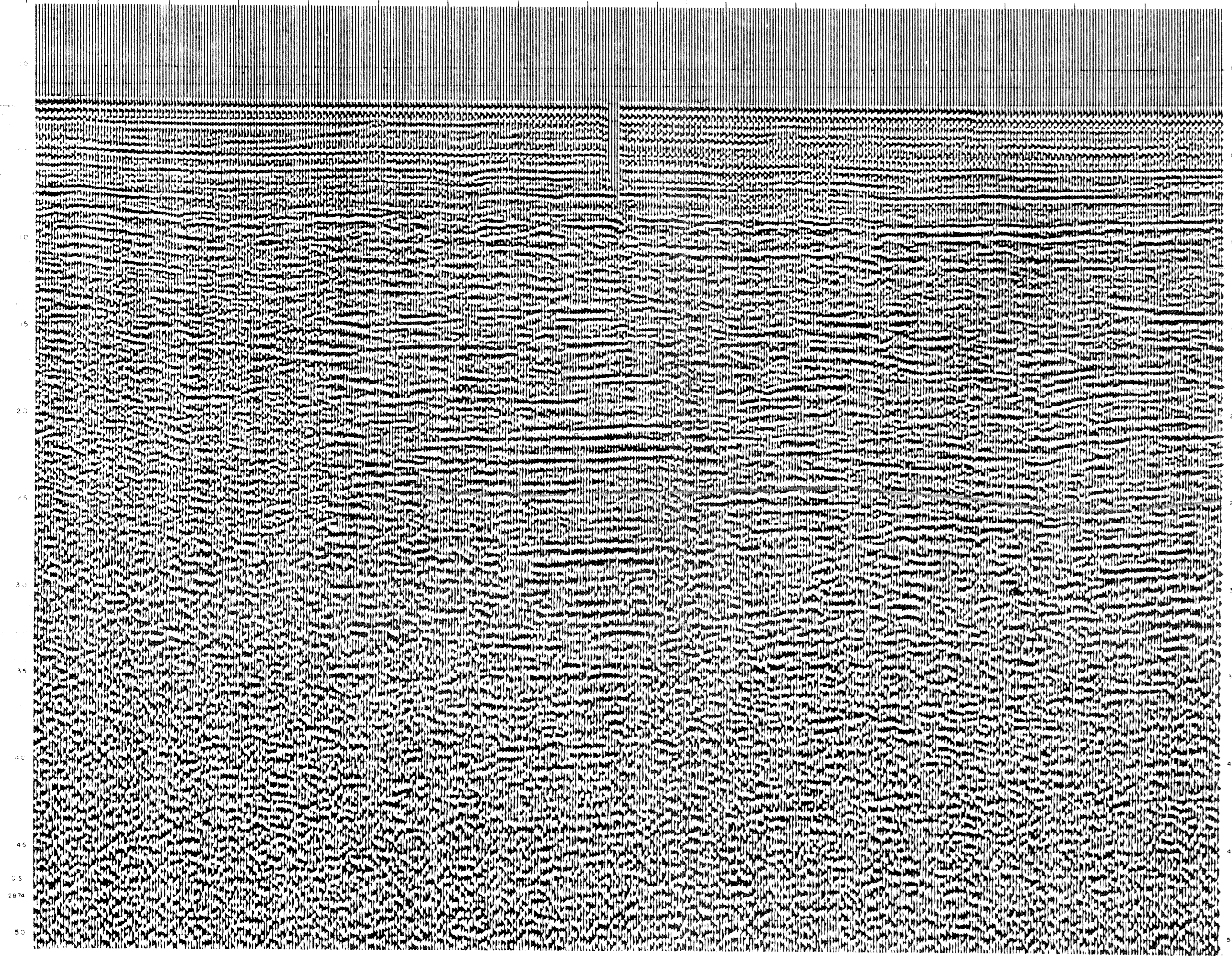
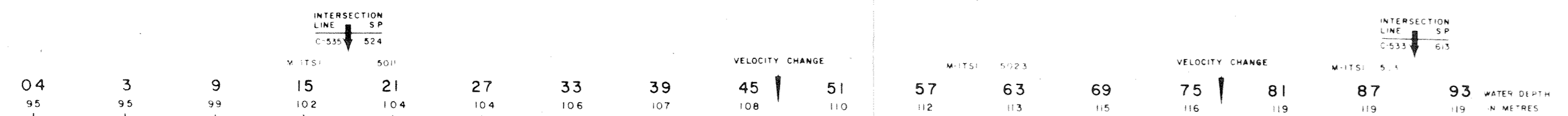


LINE: C-574
S.P. 04 to S.P. 93

181

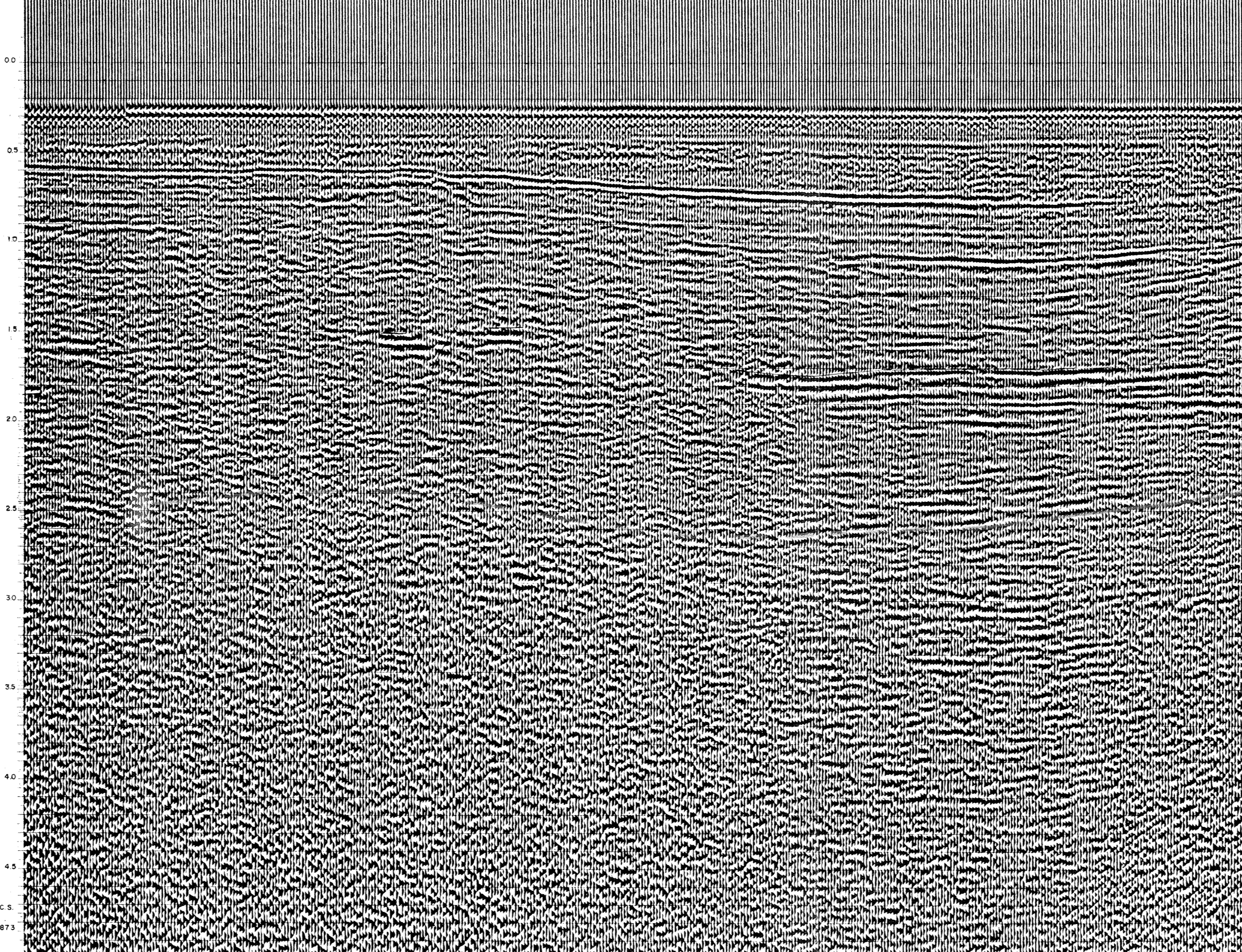
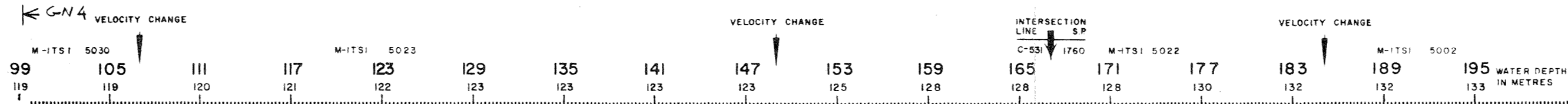
AGIP AREA SICILY PROSPECT ZONE "C"		WESTERN GEOPHYSICAL MILAN DIGITAL CENTER	
RECORDING DATA	PROCESSING INFORMATION	PROCESSING SEQUENCE	
PARTY NO. 82 ENERGY SOURCE AQUAPULSE FILTER 10-80-92 CABLE 1800 H GEOPHONES 32 CRYSTAL ELEMENT LEAD IN TAPERED ARRAY AMPLIFIER RECORD BINARY GAIN CHARGE SIZE 4 GUNS POP DATE SHOT JUNE 1958	DECONVOLUTION TIME VARIANT FILTER L.C. H.C. TIME ZONE H2 08 OCT H2 08 OCT	1) EDIT (SUM & POP) 2) DECONVOLVED BEFORE STACK 3) NORMAL MOVE OUT 4) 1800 % STACK 5) TIME VARIANT FILTER 6) PLAYBACK (UNFILTERED)	
REEL NO. 73523 DATE SEPTEMBER 1958			



LINE: C-574
S.P. 99 to S.P. 195

182

AGIP AREA SICILY PROSPECT ZONE "C"		WESTERN GEOPHYSICAL MILAN DIGITAL CENTER	
RECORDING DATA	PROCESSING INFORMATION	PROCESSING SEQUENCE	
PARTY NO. 82 ENERGY SOURCE AQUAPULSE FILTER 10-80-92 CABLE 1800 H GEOPHONES 32 CRYSTAL ELEMENT LEAD IN TAPERED ARRAY AMPLIFIER RECORD BINARY GAIN CHARGE SIZE 4 GUNS POP DATE SHOT JUNE 1958	DECONVOLUTION TIME VARIANT FILTER L.C. H.C. TIME ZONE H2 08 OCT H2 08 OCT	1) EDIT (SUM & POP) 2) DECONVOLVED BEFORE STACK 3) NORMAL MOVE OUT 4) 1800 % STACK 5) TIME VARIANT FILTER 6) PLAYBACK (UNFILTERED)	
REEL NO. 73523 DATE SEPTEMBER 1958			



LINE: C-574
P. 201 to S.P. 297

183

AGIP AREA SICILY PROSPECT ZONE "C"		WESTERN GEOPHYSICAL MILAN DIGITAL CENTER	
RECORDING DATA	PROCESSING INFORMATION	PROCESSING SEQUENCE	
PARTY NO. 82 ENERGY SOURCE AQUAPULSE FILTER 10-80-92 CABLE 1800 H GEOPHONES 32 CRYSTAL ELEMENT LEAD IN TAPERED ARRAY AMPLIFIER RECORD BINARY GAIN CHARGE SIZE 4 GUNS POP DATE SHOT JUNE 1958	DECONVOLUTION TIME VARIANT FILTER L.C. H.C. TIME ZONE H2 08 OCT H2 08 OCT	1) EDIT (SUM & POP) 2) DECONVOLVED BEFORE STACK 3) NORMAL MOVE OUT 4) 1800 % STACK 5) TIME VARIANT FILTER 6) PLAYBACK (UNFILTERED)	
REEL NO. 73523 DATE SEPTEMBER 1958			

