

1 KM

SOFIA

ANNEX 4

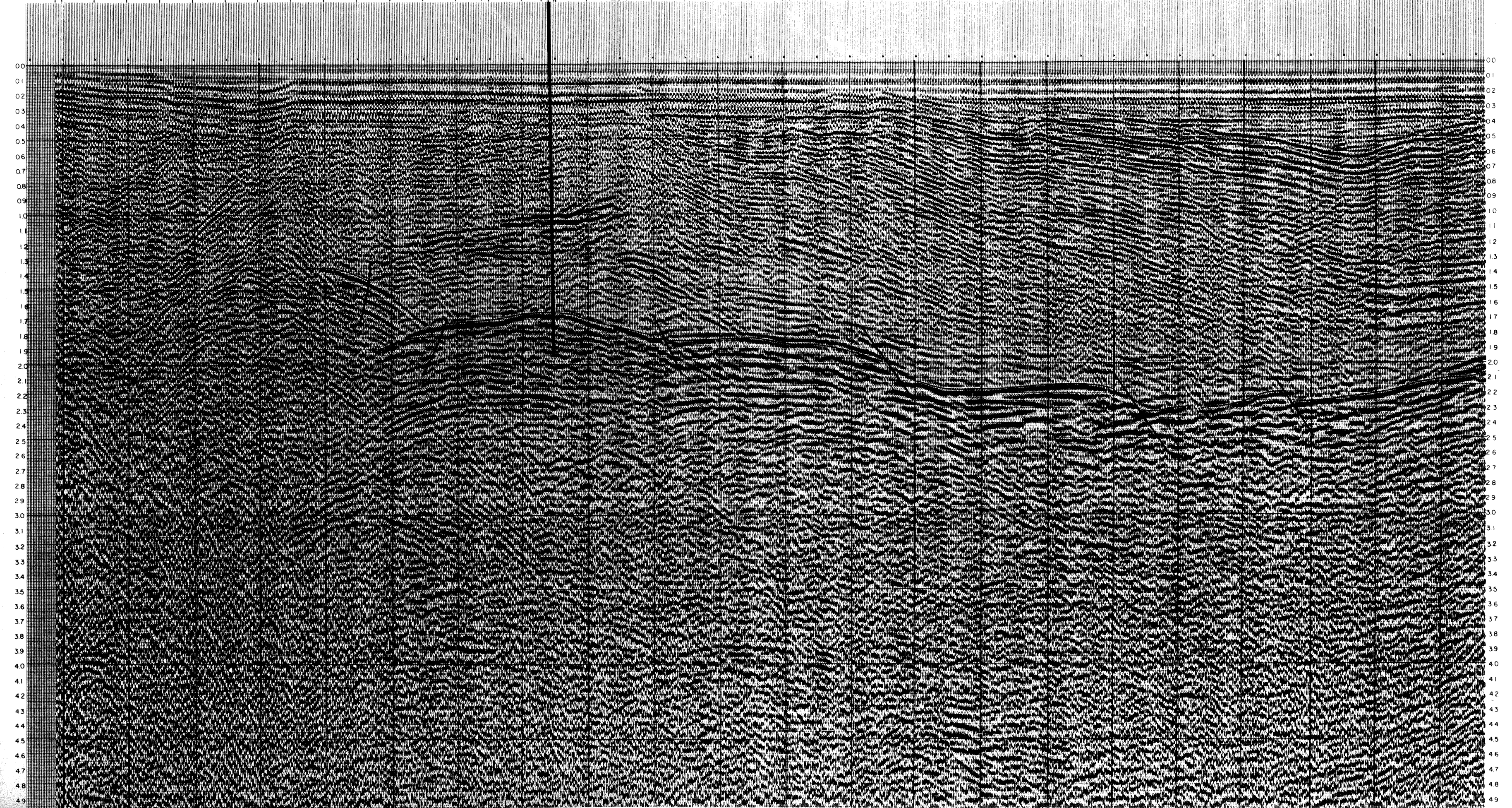
LINE ZC-144B

SHOTPOINTS 421-204

PROJECT SICILY GROUP-AMOCO

WD IN FEET 112 421 147 181 192 204 216 226 240 254 261 268 276 280 285 289 294 300 299 297 296 295 204

INT LINE ZC-101 SP 83 INT LINE ZC-105 SP 78 INT LINE ZC-107 SP 81 INT LINE ZC-109 SP 78 INT LINE ZC-111 SP 32



FIELD DATA

RECORDING INSTRUMENTS T1 DFS III
 GAIN INFORMATION BINARY
 RECORDING FILTERS 8-18/62 Hz
 SAMPLE RATE 4 MS
 REVERSE STEREO 50 METERS
 SURFACE VELOCITY 48
 NEAR SURFACE 205.8 METERS
 VELOCITY STEREO 100 METERS
 VELOCITY
 AIRGUNS AIRGUNS
 DIGICON
 OCT 16, 1972

PROCESSING

1. GAIN ADJUSTMENT 4 db/Sec
 2. VERTICAL STACK
 6. NORMAL MOVEOUT
 7. TIME DELTA
 8. 421-204
 9. 304
 10. 0.500-4.900 Sec
 DESIGN GATES FAR OFFSET 2.600-4.900 Sec
 3. SINGLE TRACK DISPLAY 8
 5. VELOCITY ANALYSIS 9
 4. COMMON DEPTH POINT GATHER
 11. 421-204
 12. 304
 13. 0.500-4.900 Sec
 DESIGN GATES NEAR OFFSET 0.500-4.900 Sec
 10. 3
 10. 40
 10. 30
 5. 25

PROCESSED BY
 digicon inc
 HOUSTON, TEXAS