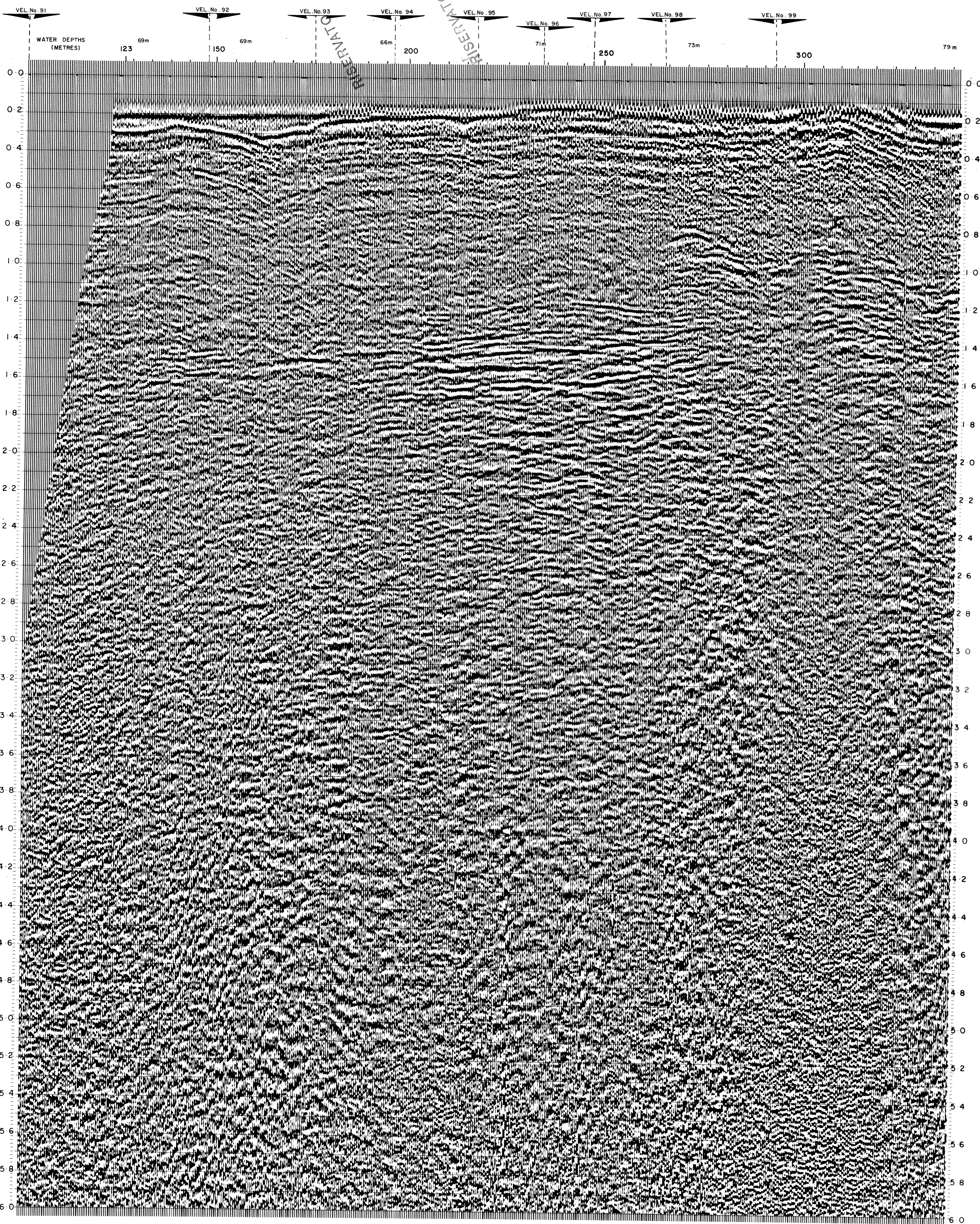


DIRECTION SHOT 136°

E.G.V. EXPLORATION ITALIANA S.p.A.

LINE 16A
OFFSHORE SICILY

SP's 123-344



FIELD INFORMATION

RECORDED BY: MANDREL MARINE CREW 260
 DATE RECORDED: 6th APRIL 1973
 METHOD: MANDREL 'STAGARAY' AT DEPTH OF 9-11 METRES
 RECORDING SYSTEM: D.F.S. III BINARY GAIN WITH FILTER 8-62
 RECORDING LENGTH: 6 secs at 4ms S.R.
 CABLE: 2.4 KMS CABLE OF NEUTRAL BUOYANCY - 24 CHANNEL WITH 64 HYDROPHONES
 PER CHANNEL CHANNEL SPACING OF 50 MS CABLE AT DEPTH OF 12 METRES
 POP INTERVAL: 50 MS GIVING 24 FOLD COVERAGE OFFSET = 238 MS TO NEAR TRACE (TRACE 48)

PROCESSING PROCEDURE

- 1) DEMULTIPLEX FIELD REELS TO MPX-1, WITH GAIN RECOVERY
- 2) DECONVOLUTION WINDOW 1800ms OPT = 40pts
- 3) AVERAGE VELOCITY DETERMINATION - VELSTACK
- 4) STACK - 24 FOLD C.D.P. WITH GEOPHONE / GUN STATICS APPLIED (DATUM AT S.L.)
- 5) DECONVOLUTION WINDOW 0.5 - 2.1 secs OPERATOR = 60pts LAG = 7pts
- 6) TIME VARYING BANDPASS FILTER

TIME VARYING BANDPASS FILTER

PRESENTATION: SHOT POINT NUMBER = GUN POSITION
 SCALE: HORIZ 25.4 traces / inch
 VERT 10cm/sec
 W/O NUMBER 3355
 DATE PROCESSED: JUNE 1973

OFFSHORE SICILY AREA

The map shows a grid with coordinates ranging from 12° 20' E to 13° 20' E and 37° 20' N to 38° 20' N. A 'PROVATO' watermark is present over the map.



PROCESSED BY
MANDREL GEOPHYSICAL
INC
LONDON
DATA PROCESSING
CENTRE