

ALL. N°
 LINE BC-41
 SP 07 to SP 121

AGIP PROJECT C-R22-AV WESTERN GEOPHYSICAL

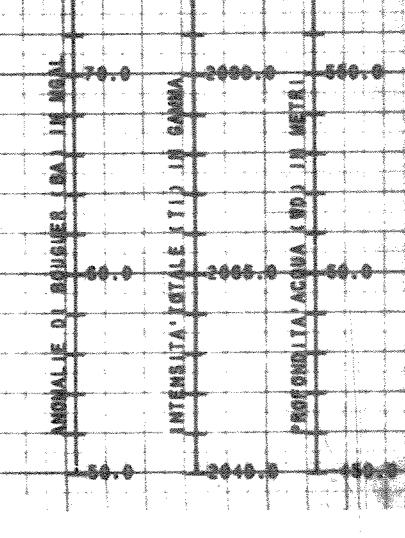
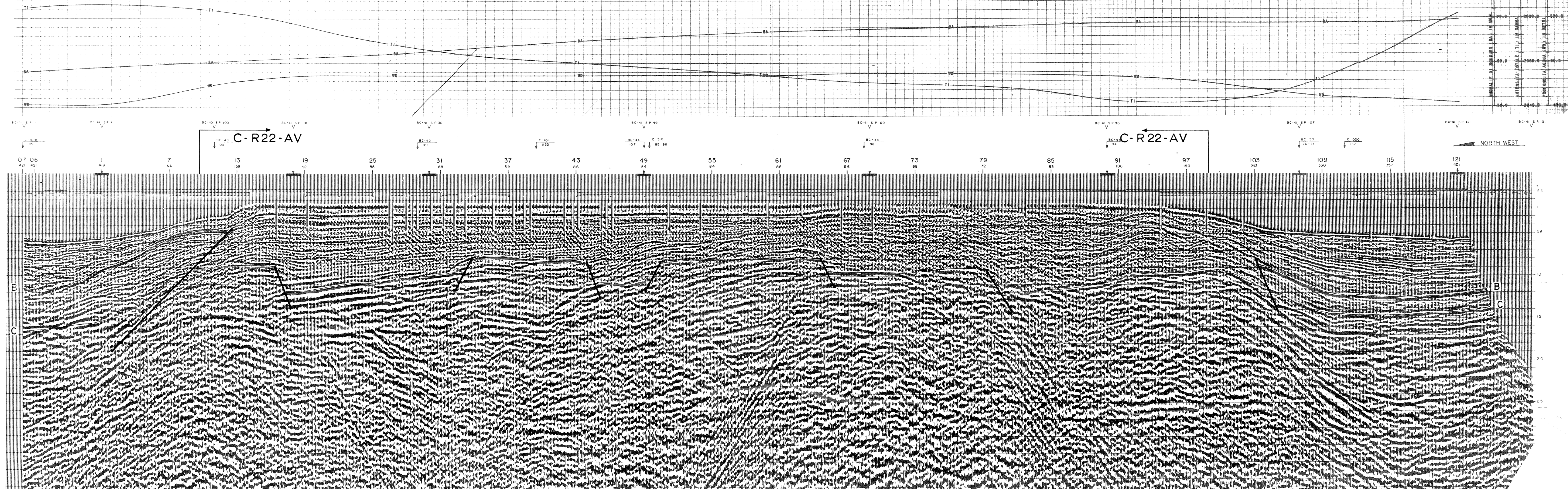
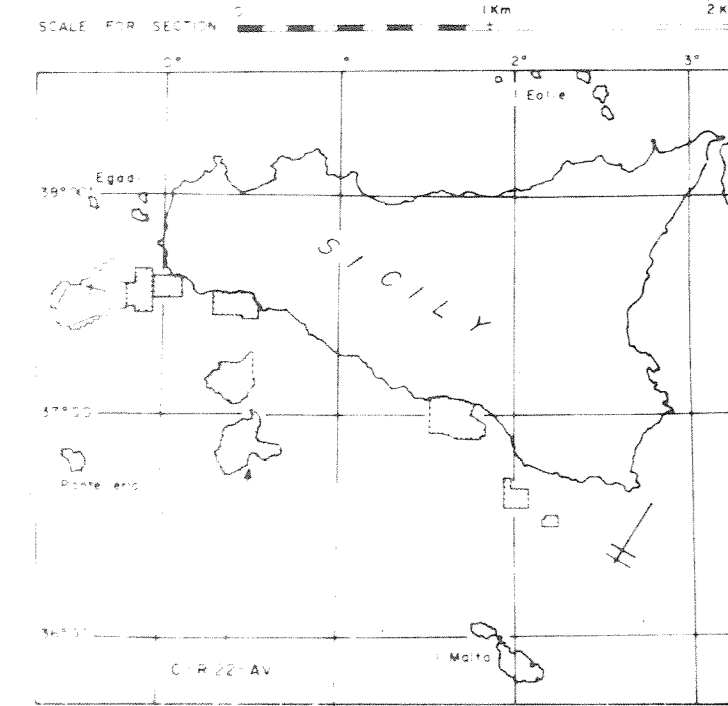
AREA SICILIAN CHANNEL

RECORDING DATA	PROCESSING SEQUENCE
PARTY NO. 83	1) EDIT (SIM PER)
ENERGY SOURCE MAXIPULSE	2) DE-BUBBLE
FILTER 10 HZ	3) DECONVOLVE
TABLE AIR GROUPS 2000	4) DEDUCE STA
SE CHANNELS 32 CRYSTAL ELEMENT	5) TV FILTER
TAPERED ARRAY	6) PLAYBACK
AMPLIFIER DES 888	VELOCITIES INTERPOLATED BETWEEN POINTS OF APPLICATION
CHARGE SIZE 8 1/2 MCM	CORRECTION TO SEA LEVEL NOT APPLIED
SUN DEPTH 3000	STK REEL NO. 73284
AVG CABLE LENGTH 3200	
DATE SHOT OCTOBER 1973	

PROCESSING INFORMATION

SECTION BEFORE STACK	TIME VARIANT FILTER
TIME VARIANT MIN PHASE NO FILTER	TIME ZONE H1 QB/OCT H1 QB/OCT
AUTO CORR INT 2 ZONES	VARIABLE 12 18 50 48
SEARCH ZONE 12 18 40 48	10 18 45 48
OPERATOR LENGTH SEARCH ZONE	10 18 40 48
TIME ZONE 0 40 SEC	9 12 35 48
ITERATIONS	7 6 30 36
	5 6 20 24

PLAYBACK DATA	LEGEND
SAMPLE RATE 2 Hz	LINE 100
AMP. GAIN ATTEN 2 10 10	INTERSECTION
SEC 9.5 10	VEL. DERIVED AT
SLIP 6.5 10	VELOCITY APPLIED
REFORMAT REEL 88548	VELOCITY ANALYSIS
DATE NOVEMBER 1973	SHOT POINT NO
	WATER DEPTH IN METRES 10



NORTH WEST