



LINE BC-44

SP 115 to SP 162

AGIP PROSPECT C-R22-AV WESTERN GEOPHYSICAL  
 AREA: SICILIAN CHANNEL

RECORDING DATA

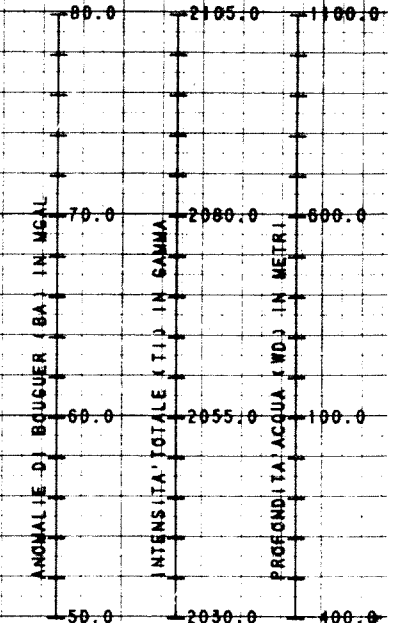
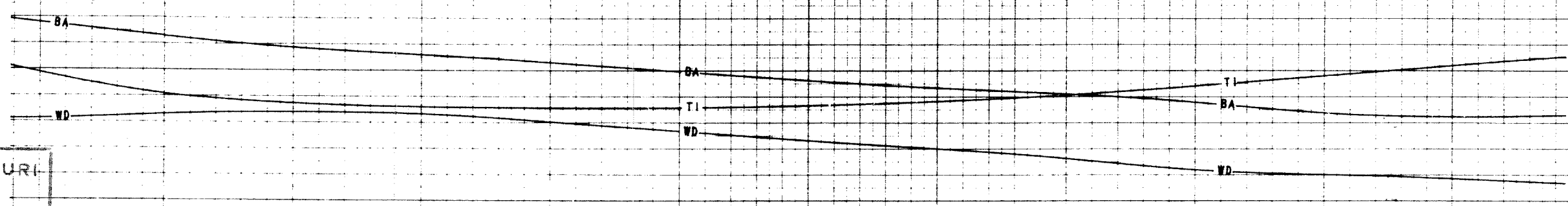
PARTY No. 63  
 ENERGY SOURCE MAXIPULSE  
 FILTER HI CUT 100 HZ ALIAS 62  
 CABLE 48 GROUPS - 240C mt  
 GEOPHONES 32 CRYSTAL ELEMENT  
 TAPERED ARRAY  
 OFFSET 238 mt  
 AMPLIFIER DDS 888  
 CHARGE SIZE 8 Oz. NCA  
 GUN DEPTH 92 ms - 107 ms  
 AVG. CABLE DEPTH 12.50  
 DATE SHOT OCTOBER 1973

PROCESSING SEQUENCE

1) EDIT (SUM POP) 12 G U. 1976  
 2) DE-BUBBLE  
 3) DECONVOLUTION  
 4) 2400% ST  
 5) TV FILTER  
 6) PLAYBACK  
 VELOCITIES INTERPOLATED BETWEEN POINTS OF APPLICATION  
 CORRECTION TO SEA LEVEL: NOT APPLIED  
 STK REEL No. 85174

SEZIONE IDROCARBURI

Spec. N. 2419  
 Posiz.



PROCESSING INFORMATION

DECON BEFORE STACK

TIME VARIANT MIN PHASE INV. FILTER  
 AUTO CORR INT 2 ZONES  
 SEARCH ZONE 32 ms to 200 ms  
 OPERATOR LENGTH SEARCH ZONE  
 TIME ZONE 0-4.0 SEC  
 ITERATIONS 1

TIME VARIANT FILTER

VARIABLE	L.C. Hz	H.C. dB/OCT
12	18	50 48
10	18	45 48
10	18	40 48
8	12	35 48
7	6	30 36
5	6	20 24

PLAYBACK DATA

SAMPLE RATE 2 ms  
 AMPLITUDE ATT 2 8 = 10  
 1 Sec 9.5 cm  
 Scale Km 6.3 cm  
 REFORMAT REEL 88483  
 DATE NOVEMBER, 1973

LEGEND

INTERSECTION LINE S.P.  
 VEL DERIVED AT VELOCITY APPLIED  
 VELOCITY ANALYSIS  
 SHOT POINT No. 100  
 WATER DEPTH IN METRES 10

