

LINE BC-27

SP 07 to SP 98

SEZIONE IDROCARBURI
 M. POLI
 12 GIU. 1976
 Prof. *Chl9*
 Sec. *Horiz*

AGIP PROSPECT C-R21-AV WESTERN GEOPHYSICAL

AREA SICILIAN CHANNEL

RECORDING DATA PROCESSING SEQUENCE

PARTY No. 63
 ENERGY SOURCE MAXIPULSE
 FILTER 0.5 H. ALIAS BC
 CABLE 48 DROPS-2400 m
 GEOPHONES 32 CRYSTAL ELEMENT
 TAPERED ARRAY
 OFFSET 238 m
 AMPLIFIER DDS 888
 CHARGE SIZE 8 Oz. N.C.N.
 GUN DEPTH 9.2 mts - 0.7 mts
 AVG. CABLE DEPTH 12.50
 DATE SHOT OCTOBER 1973

1) EDIT (SUM I POP)
 2) DE-BUBBLE
 3) DECONVOLUTION
 4) 2400% STK
 5) TV FILTER
 6) PLAYBACK

VELOCITIES INTERPOLATED BETWEEN POINTS OF APPLICATION
 CORRECTION TO SEA LEVEL: NOT APPLIED
 STK REEL No. 75951

PROCESSING INFORMATION

DECON BEFORE STACK TIME VARIANT FILTER

TIME VARIANT MIN PHASE INV. FILTER
 AUTO CORRECT 5 ZONES
 SEARCH ZONE 32 ms to 200 ms
 OPERATOR LENGTH SEARCH ZONE
 TIME ZONE 0-40 SEC
 ITERATIONS 1

VARIABLE	L.C.	H.C.
10	18	45-59
10	18	40-48
8	12	35-48
7	6	30-36
5	6	20-24

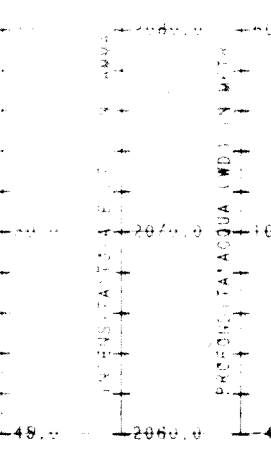
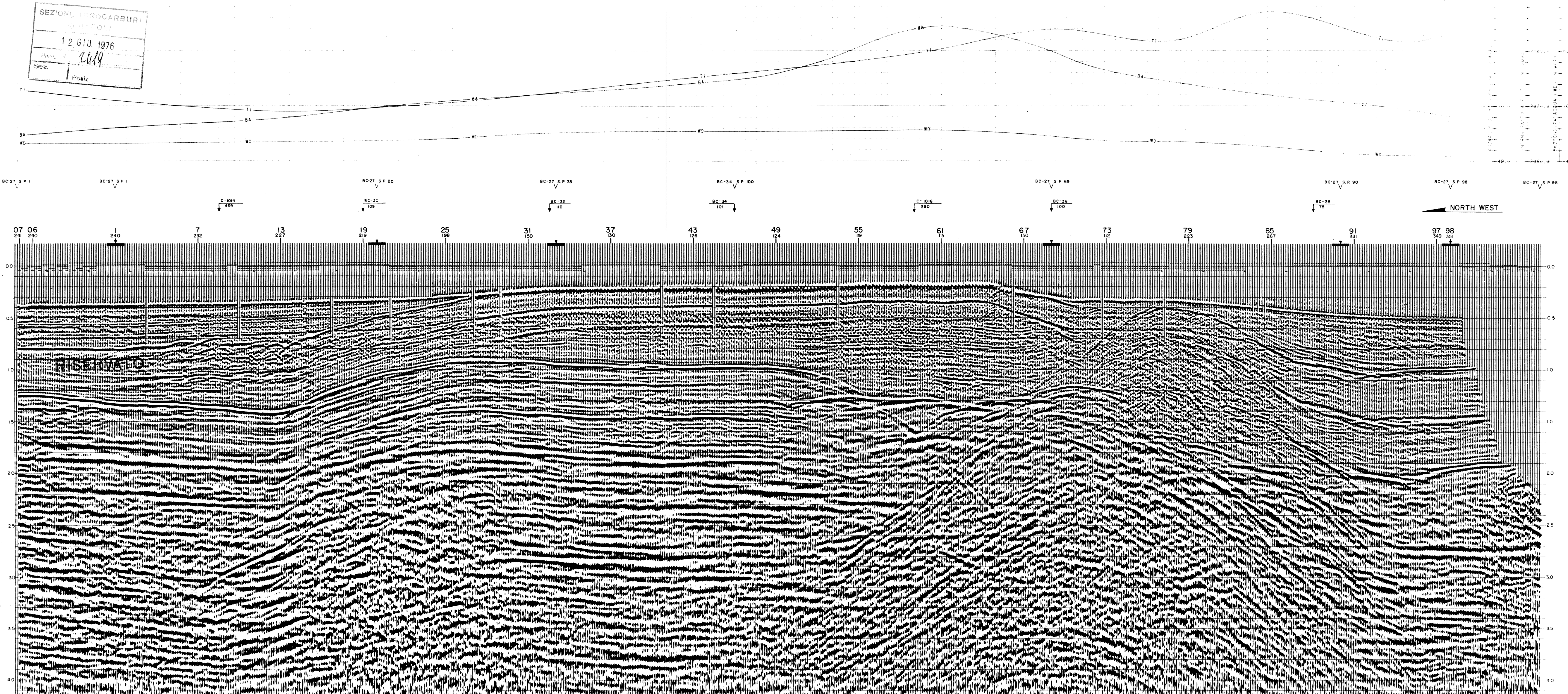
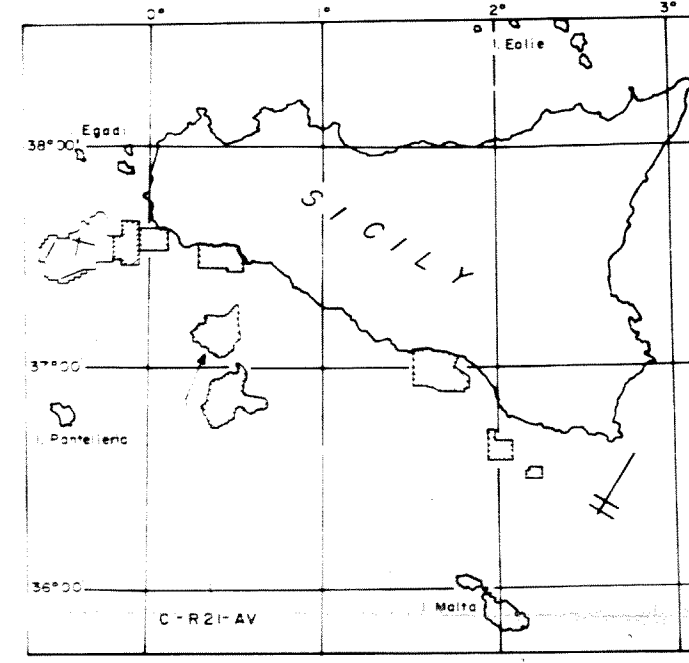
PLAYBACK DATA LEGEND

SAMPLE RATE 2 ms
 AMPITUDE ATT. 2 B-10
 Scale 1 Sec 9.5 cm
 Km 6.3 cm

REFORMAT REEL 76698
 DATE NOVEMBER 1973

INTERSECTION LINE S.P.
 VEL. DERIVED AT VELOCITY APPLIED
 VELOCITY ANALYSIS: V
 SHOT POINT No. 100
 WATER DEPTH IN METRES 10

SCALE FOR SECTION 0 1km 2km



NORTH WEST