



Stratigraphic. Section: N. 4 MONTE CAPPELLETTA

General Location: F. 132 II SE

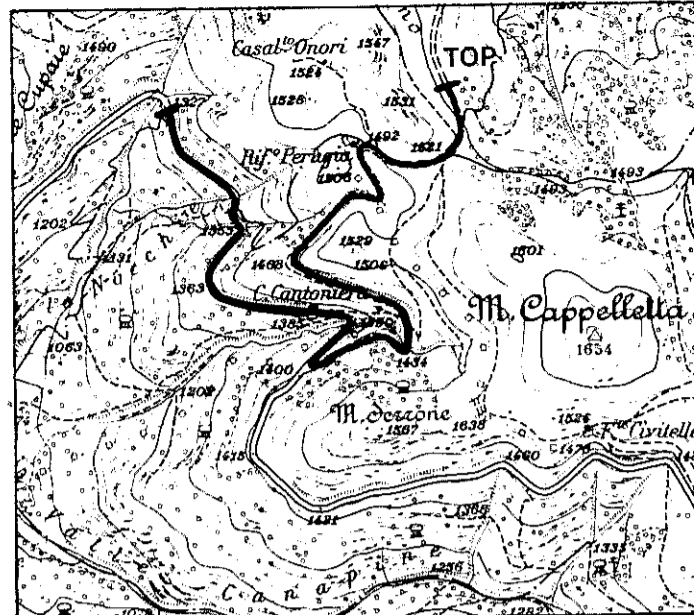
Measured by: P. FACIBENI - R. CAPACCIOLI

Date. APRIL 1977

Method Measured: Jacob Staff and Brunton Compass

Scale: 1:5.000

Total Thickness: m.660



Location Scale: 1:25000

Age	FM.	Sample N°	Meters	Lithology	Thickness	Lithologic Description	Shows	Biostratigraphy
MIDDLE UPPER JURASSIC	SCISTE AD. ARTICI				90	Micritic limestone, marlstone and shale, wine red or green gray to tan, with chert levels; bedding 5-30 cm.		
			100		30	Micritic limestone, locally microcrystalline or fine detrital and skeletal, wine red, intercalated with micritic mudstone; bedding 20-40 cm.		
UPPER LIAS	ROSSO AMMONITICO				36	Covered.		
LOWER JURASSIC	CORNIOLO		200		201	Limestone microcrystalline, cream to tan, with nodules and lenses of chert; bedding 60-100 cm.		
			400		237	As above; bedding 15-60 cm.		
			600		60	Dolomitic limestone and dolomite, yellow-gray to buff, locally vuggy; bedding: massive at bottom, 100-120 cm. towards the top.		
LOWER LIAS	CALCARE MASSICCIO							