



Stratigraphic Section: N. 3 FORCA DI PRESTA

General Location: F. 132 II NO

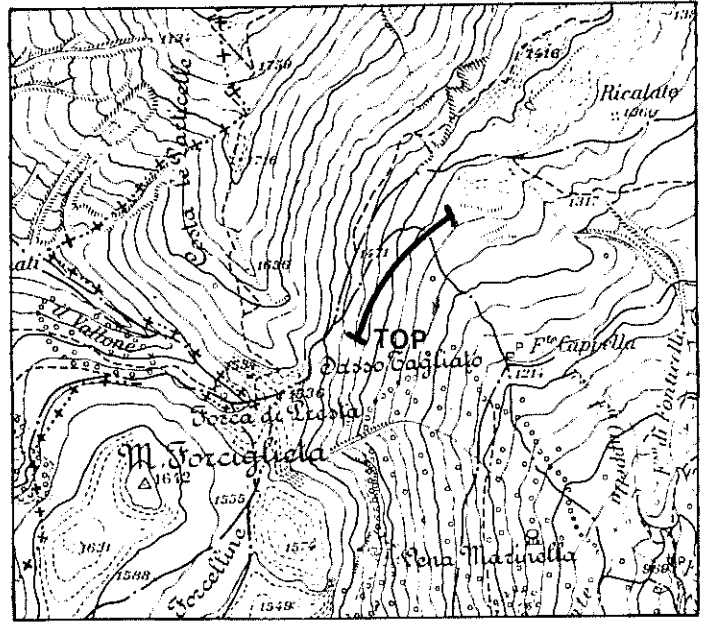
Measured by: P. FACIBENI - R. CAPACCIOLI

Date: APRIL 1977

Method Measured: Jacob Staff and Brunton Compass

Scale: 1:1.000

Total Thickness: m.327



Location Scale: 1:25000

Age	FM.	Sample N°	Meters	Lithology	Thickness	Lithologic Description	Shows	Biostratigraphy
LOWER CRETACEOUS	MAIOLICA		0			Micritic limestone, slightly microcrystalline, white, with spar veins and rare levels of pink chert; bedding 10-20 cm.		
			50		84			
			100		60	As above, with more frequent chert; bedding 40-80 cm.		
			150			As above with rare chert; bedding 20-40 cm.		
UPPER JURASSIC	SCISTI ADAPTICI		200		93			
			250		15	As above; bedding 50-100 cm.		
			300		75	Micritic limestone, olive gray, with light brown chert, interbedded with thin levels of shale, light gray, slightly calcareous, laminated; bedding 5-30 cm., 20-50 cm. at top.		
			327					