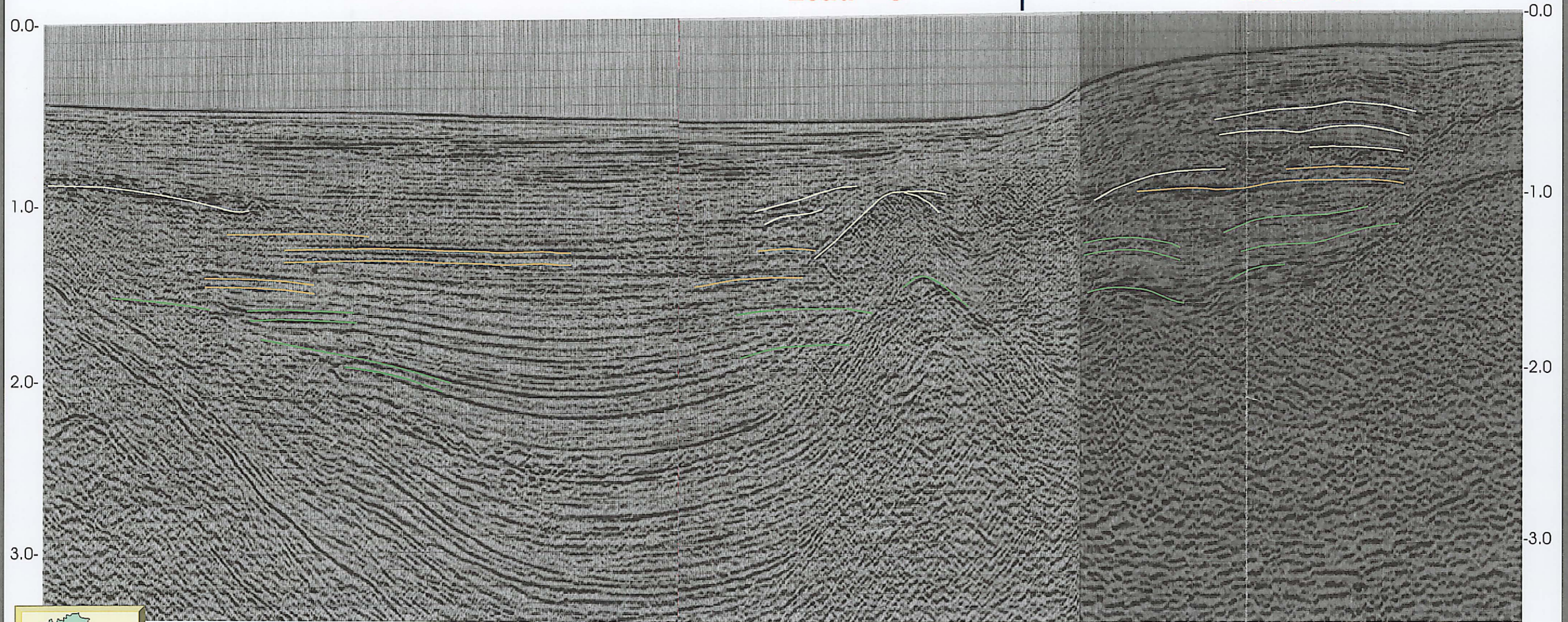




SW **FR307 - 78** Prospect **FEDORA** **BACINO PLIO-PLEISTOCENICO DI SIBARI** **F.R26.AG** | **F.R30.AG** **DF80 - 22** NE
Prospect **FAUSTA** Lead "C" Lead "A"



- ANOMALIE NEI LIVELLI CROTONIANI
- ANOMALIE NEI LIVELLI SICILIANI
- ANOMALIE NEI LIVELLI SANTERNIANI