



LINE : AC-23

S.P. 07 TO S.P. 52

DATUM PLANE : SEA LEVEL



DIREZIONE MINERARIA AREA : SICILIAN CHANNEL PROSPECT : ZONE C WESTERN GEOPHYSICAL COMPANY OF AMERICA		
RECORDING DATA PARTY No WGC P-82 ENERGY SOURCE MAXIPULSE FILTER OUT-OUT CABLE 48 GROUPS - 2400m GEOPHONES 20 CRYSTAL ELEMENT EVENLY SPACED 1.52m APART LEAD IN 187.45m AMPLIFIER SDS BINARY GAIN CHARGE SIZE 8 02m NCH GUN DEPTH 12m AVG. CABLE DEPTH 14m DATE SHOT JULY-AUGUST 1971	PROCESSING INFORMATION DECON BEFORE STACK TIME VAR. MIN. PHASE INVERSE FILTER AUTO CORR. INT. : 2 EQUAL ZONES/TRACK SEARCH ZONE : 32ms - 160ms OPERATOR LENGTH : SEARCH ZONE TIME ZONE : 0 - 50 Sec ITERATIONS : 1 DECON AFTER STACK TIME VAR. MIN. PHASE INVERSE FILTER AUTO CORR. INT. : 2500ms SEARCH ZONE : 2nd 0 Xing - 240ms OPERATOR LENGTH : SEARCH ZONE TIME ZONE : 0 - 5 Sec ITERATIONS : 1	PROCESSED SEQUENCE 1) EDIT (FIXED POINT) 2) DEBUBBLE (ADJACENT TA SUMMED) 3) DECONVOLUTION BEFORE STACK 4) 2400% STACK 5) DECONVOLUTION AFTER STACK 6) TV FILTER 7) PLAYBACK VELOCITY ANALYSIS VELOCITIES INTERPOLATED BETWEEN POINTS OF APPLICATION CORRECTION TO SEA LEVEL = 0 ms REEL NO. 62178 A DATE OCTOBER 1971



LINE : AC-23

S.P. 53 TO S.P. 115

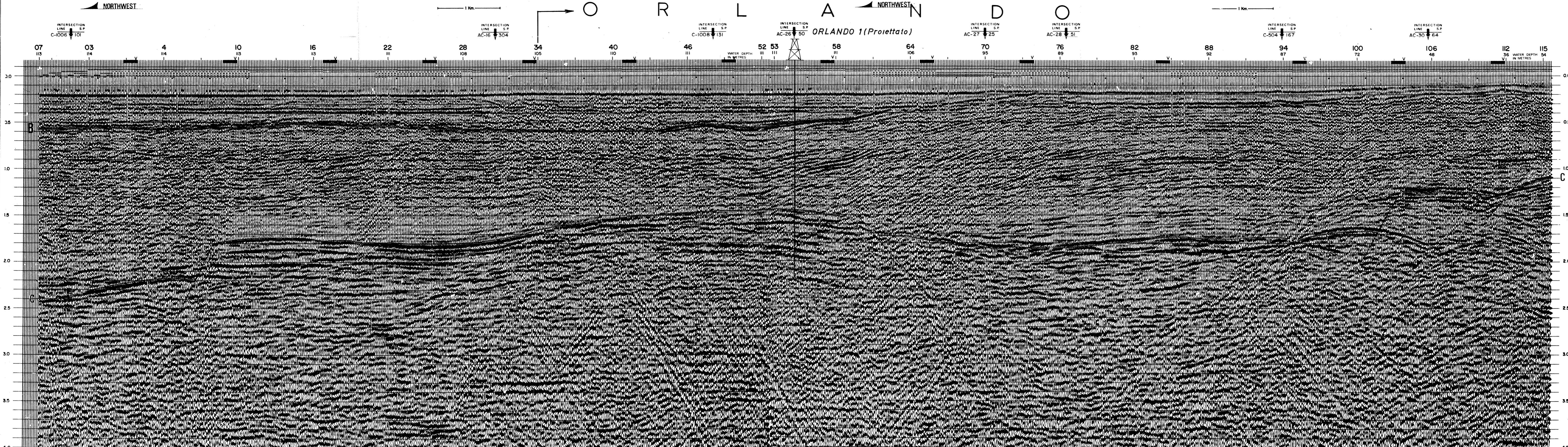
DATUM PLANE : SEA LEVEL



DIREZIONE MINERARIA AREA : SICILIAN CHANNEL PROSPECT : ZONE C WESTERN GEOPHYSICAL COMPANY OF AMERICA		
RECORDING DATA PARTY No WGC P-82 ENERGY SOURCE MAXIPULSE FILTER OUT-OUT CABLE 48 GROUPS - 2400m GEOPHONES 20 CRYSTAL ELEMENT EVENLY SPACED 1.52m APART LEAD IN 187.45m AMPLIFIER SDS BINARY GAIN CHARGE SIZE 8 02m NCH GUN DEPTH 12m AVG. CABLE DEPTH 14m DATE SHOT JULY-AUGUST 1971	PROCESSING INFORMATION DECON BEFORE STACK TIME VAR. MIN. PHASE INVERSE FILTER AUTO CORR. INT. : 2 EQUAL ZONES/TRACK SEARCH ZONE : 32ms - 160ms OPERATOR LENGTH : SEARCH ZONE TIME ZONE : 0 - 50 Sec ITERATIONS : 1 DECON AFTER STACK TIME VAR. MIN. PHASE INVERSE FILTER AUTO CORR. INT. : 2500ms SEARCH ZONE : 2nd 0 Xing - 240ms OPERATOR LENGTH : SEARCH ZONE TIME ZONE : 0 - 5 Sec ITERATIONS : 1	PROCESSED SEQUENCE 1) EDIT (FIXED POINT) 2) DEBUBBLE (ADJACENT TA SUMMED) 3) DECONVOLUTION BEFORE STACK 4) 2400% STACK 5) DECONVOLUTION AFTER STACK 6) TV FILTER 7) PLAYBACK VELOCITY ANALYSIS VELOCITIES INTERPOLATED BETWEEN POINTS OF APPLICATION CORRECTION TO SEA LEVEL = 0 ms REEL NO. 62178 A DATE OCTOBER 1971

CR-5-AS

ORLANDO 1 (Proietta)



ALL 4