

ALL. 2 : SCHEMA SEDIMENTO-STRUTTURALE E TEMI DI RICERCA

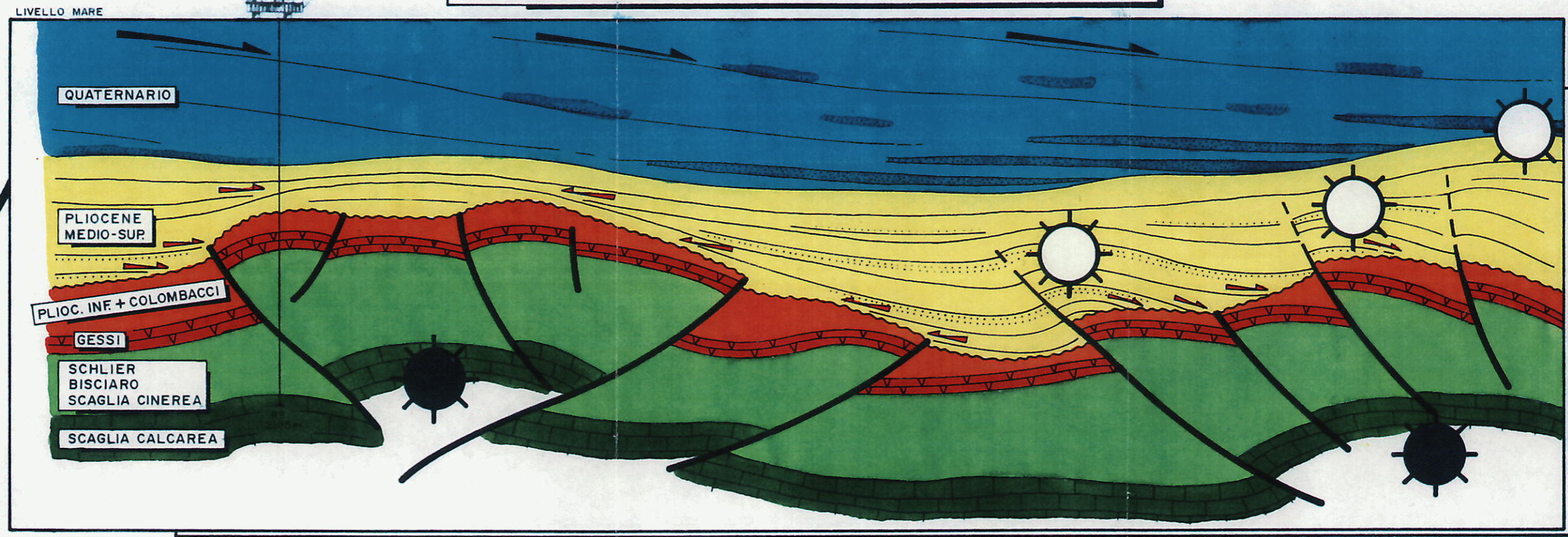
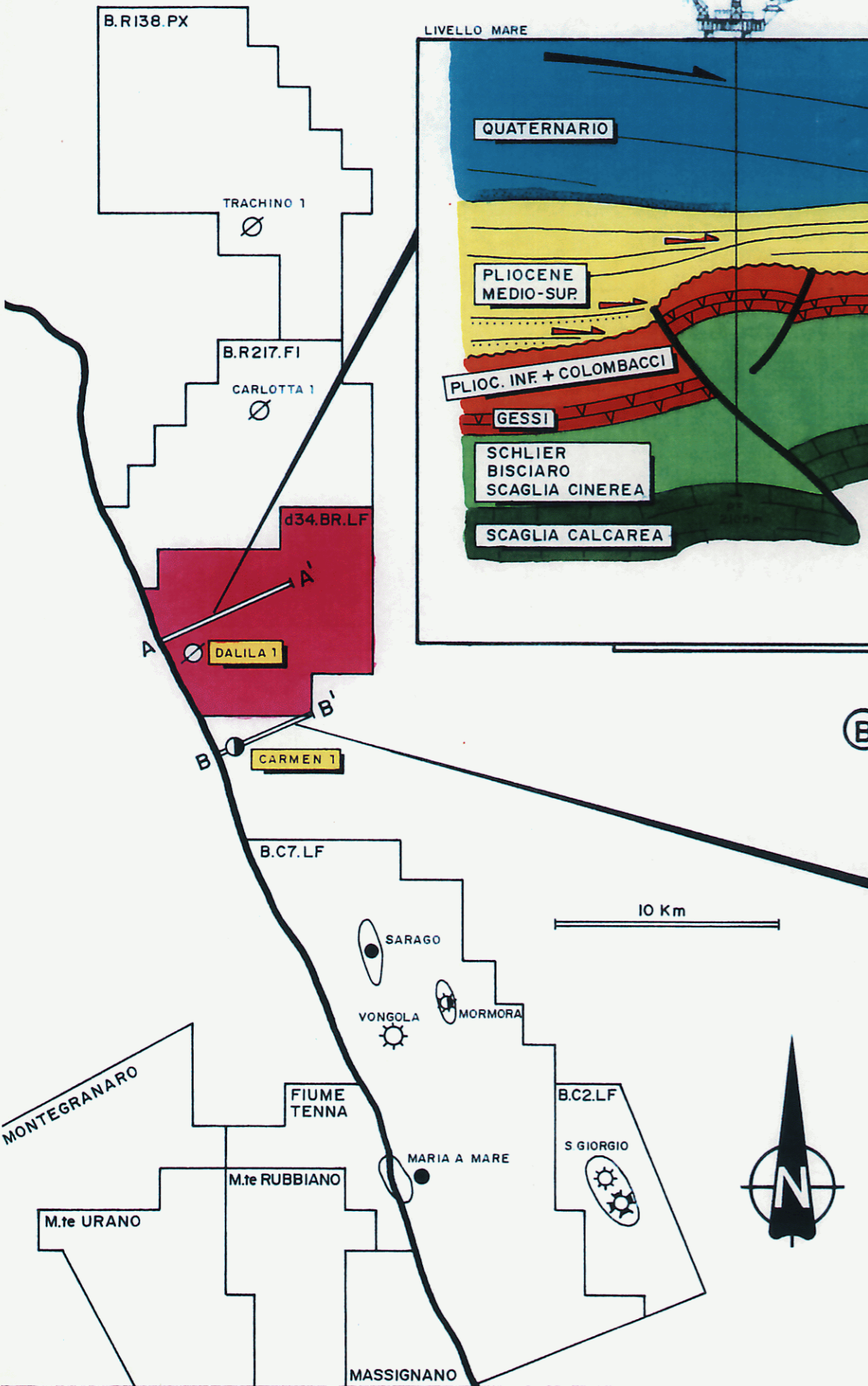


(A) OSO

DALILA 1 (proiettato)

TEMI DI RICERCA : ☀ OLIO E GAS ☀ GAS SECCO

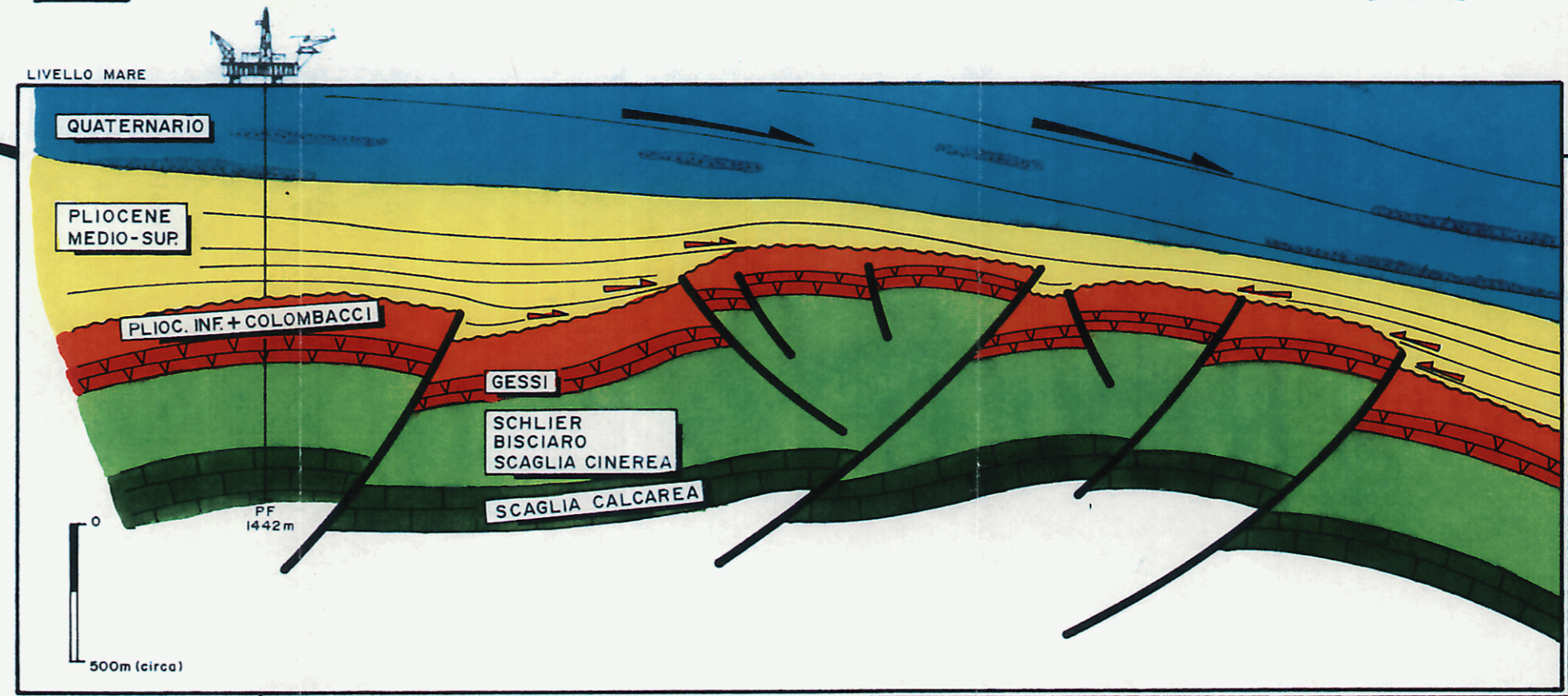
ENE (A')



(B) OSO

CARMEN 1

ENE (B')



10 Km



500m (circa)