

ELF AREA: MARCHE-ABRUZZO WESTERN R. RICERCHE ITALIANA MINERARIA PERMITS: BR-125LF/ GEOPHISICHE S.p.A.

RECORDING DATA PLAYBACK DATA

SHOT BY WESTERN R.G. S.p.A. DATUM PLANE SEA LEVEL
 PARTY F-5 WEATHERING VEL. 600 m/sec
 MAGNETIC RECORDER D05777 BINARY SUBWEATHERING VEL. 2000 m/sec
 GAIN 4 ms
 SAMPLE RATE 6000 ms
 RECORD LENGTH 62 c.p.s. Scale VERTICAL 1 Sec. 9.525 cm
 FILTER HI 11 c.p.s. HORIZONTAL 1 Km. 6.25 cm
 ALIASING FILTER PREPROCESSOR REEL No. 74494
 SUBSURFACE COVERAGE 1200% c.p.s. STACK REEL No. 61909
 DATE MAY, 1976 DATE AUGUST, 1976

FIELD DATA

SPREAD CONFIGURATION - MARINE & LAND
 GROUP INTERVAL 60 m. 120m 1500m
 NEAR TRACE OFFSET 120 m.
 FAR " " 1500 m.

GEOPHONE GROUP CONFIGURATION
 MARINE
 GEOPHONES TYPE / FREQUENCY P-38 / 7.5 c.p.s. (PRESSURE SENSITIVE)
 " " / GROUP " " / GROUP
 CONNECTIONS 4 SERIES PARALLEL (2X2)

LAND
 GEOPHONES TYPE / FREQUENCY EV 22 B / 7.5 c.p.s.
 " " / GROUP 24
 CONNECTIONS 4 SERIES PARALLEL (12 X 2)

ENERGY SOURCE
 MARINE
 A) AQUAPULSE
 No. OF GUNS + CAPACITY 2
 No. OF POPS / S.P. 3
 AVERAGE GUN DEPTH 1 - 15 m.
 B) PRIMACORD
 AVERAGE CHARGE / SHOT 40 m. (EQUIVALENT 0.6 Kg.)
 AVERAGE SHOT DEPTH 0.5 - 3 m.

LAND
 DYNAMITE
 No. OF HOLES / S.P. 1
 CHARGE / HOLE 0.2 - 4 Kg.
 HOLE DEPTH 21 m.

PROCESSING SEQUENCE

- EDIT
- VERTICAL SUM (2-3 POPS)
- PREPROCESSOR
- DECONVOLUTION BEFORE STACK
 PREDICTIVE DECON TIME DOMAIN:
 No. OF WINDOWS 3
 MIN. PREDICTION DISTANCE 4 ms.
 OPERATOR LENGTH 160 ms.
- STATIC CORRECTIONS - BEFORE NMO - CDP METHOD
- VELOCITY ANALYSIS
- DYNAMIC CORRECTIONS - STRAIGHT RAY
- RESIDUAL STATIC CORRECTIONS
- COHERENCY STACK
- TIME VARIANT FILTER
- RADIAL PREDICTIVE FILTER
- REFORMAT

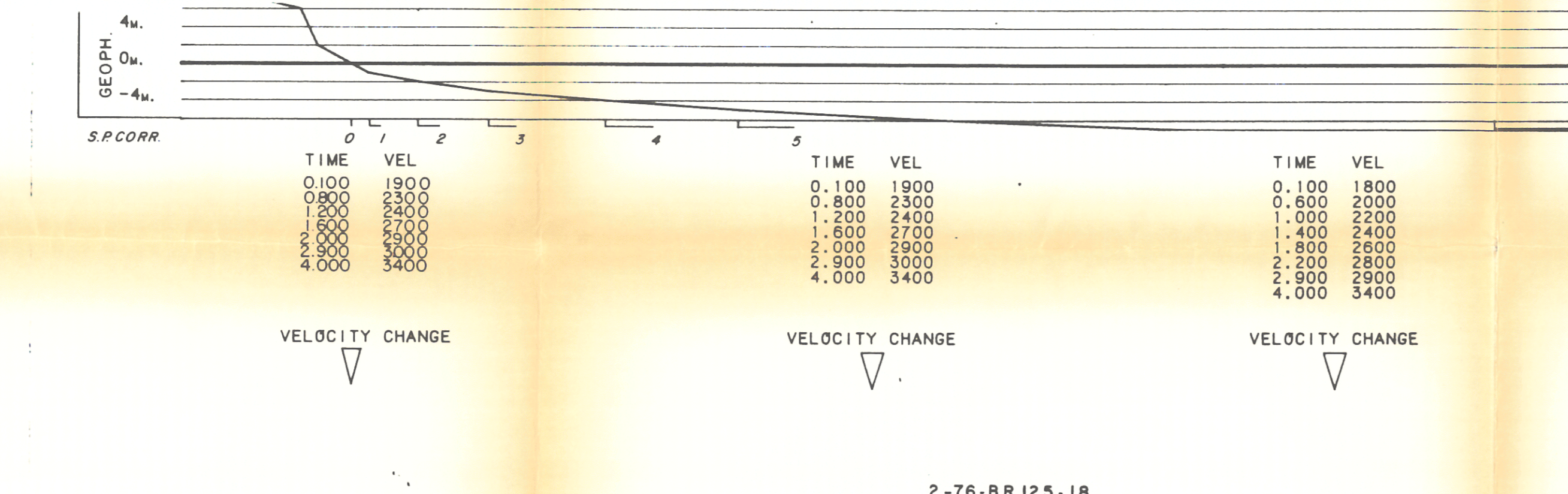
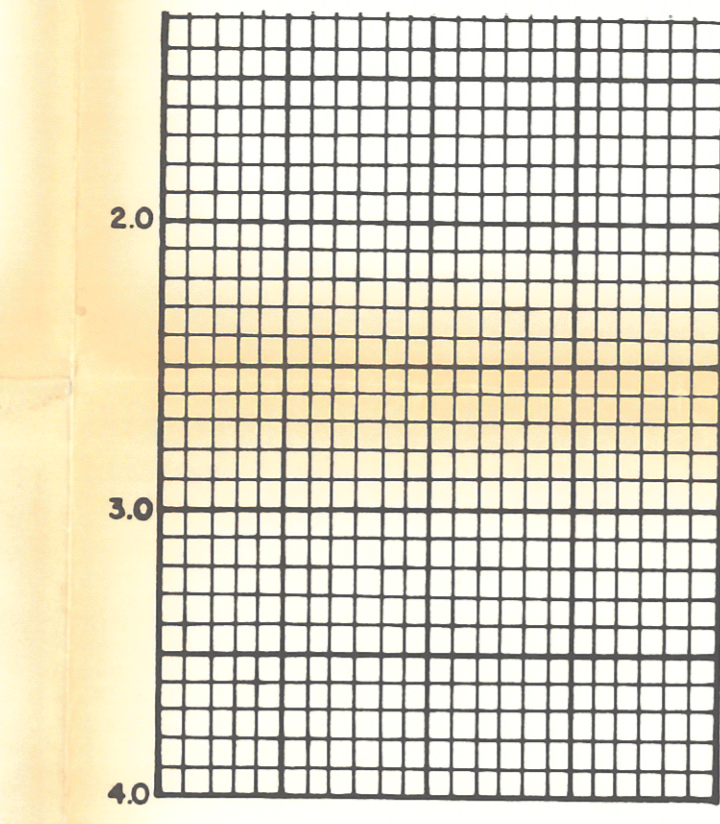
NOTE

SEZIONE IDROCARBURI di ROMA
 21 MAG 1987
 Prot. N. 2177
 III. 311-1

SNIA BPD DIVISIONE MINERARIA MILANO
 All. n. 8 Data MAG-87 N. Arch.

PERMESSO "B.R209. SV"

SEZIONE SISMICA INTERPRETATA 1/2-76-BR 125-3



ADRIATIQUE **ELF**

PROFIL 176.BR. 125-03 NE 1

BR125

TRAITEMENT NUMERIQUE P5

ORIGINE DES TEMPS: Profondeurs source et cable
 COUVERTURE 48

Sens d'exploitation

41 Date 11 5 76 Visa R/G

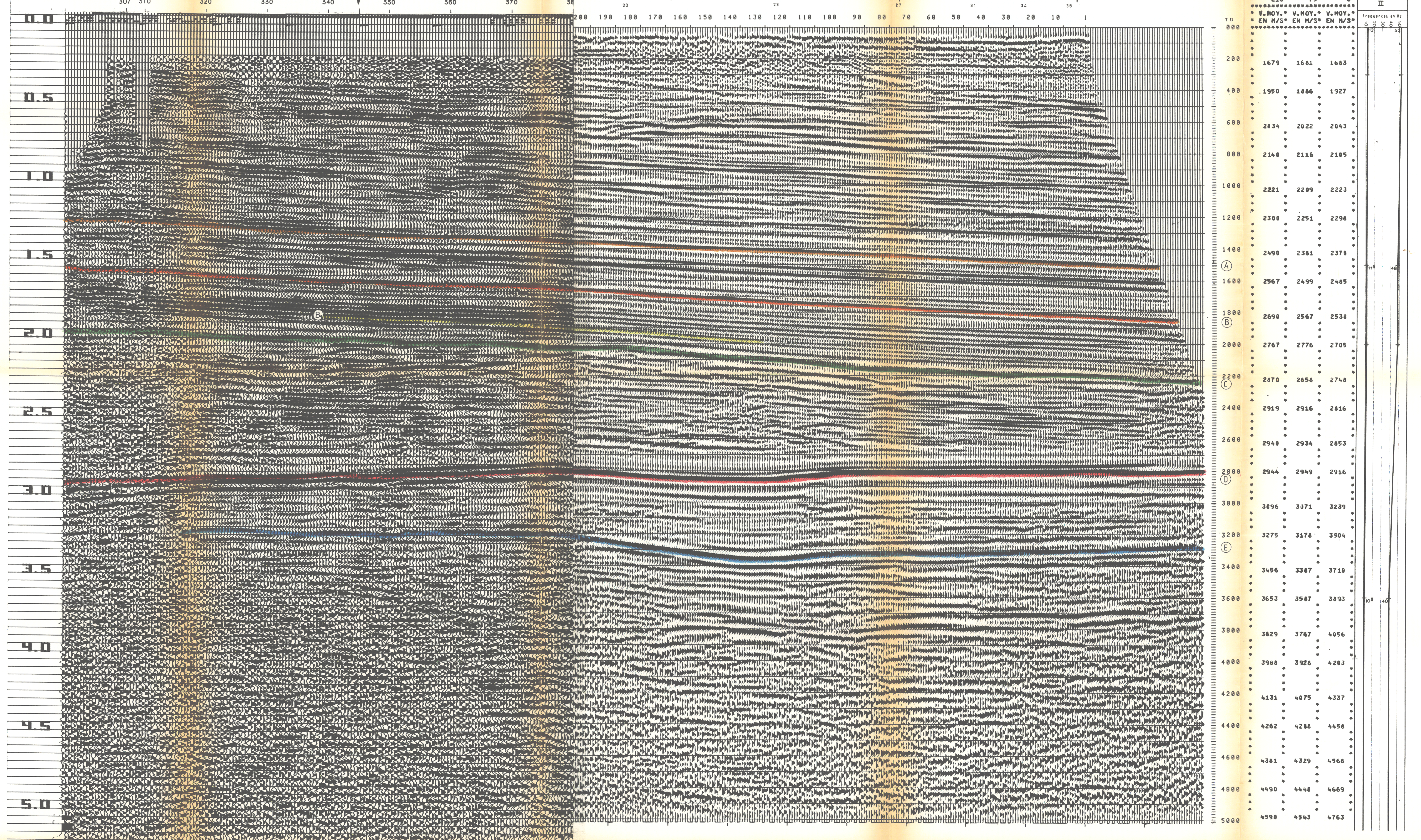
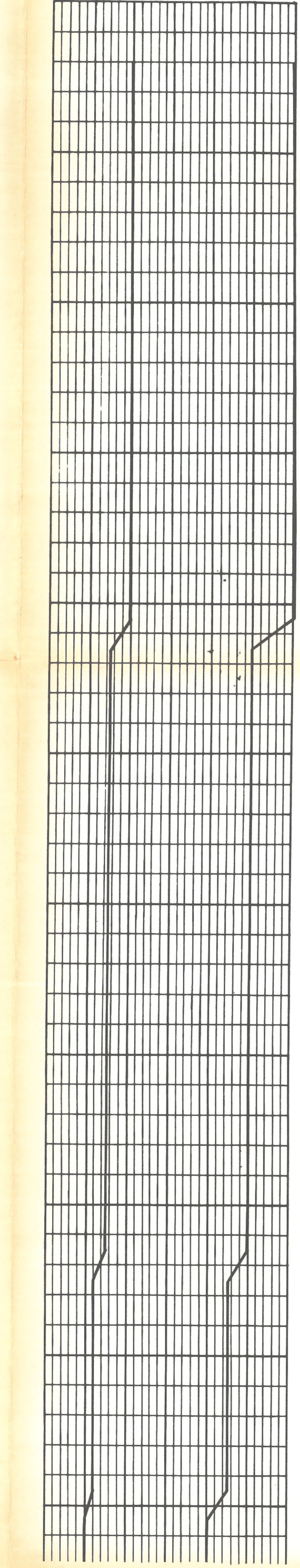
TRAITEMENT

- RECUPERATION DES AMPLITUDES
- WAPCO Stabilisation du signal raproché
- MUTIS
- DECONVOLUTION 240 ms
 Intervalles 300 2300 ms
 2000 4000 ms
- ANALYSE DES VITESSES AX
- CORRECTIONS DYNAMIQUES
- ADDITION COUVERTURE 48
- FILTRE VARIABLE
- AMELIORATION DE LA COHERENCE SPATIALE AMCO 8
- LOCALISATION DES TRACES
- REJEU ANALOGIQUE

TERRAIN

Navire GLORITA TIDE
 Labo SN 338 filtre 1 B.125
 gain binaire: échantillonnage 4 ms
 Streamer 2400 m (Profondeur: 10 m.)
 n° de traces 48 (50 m entre traces)
 Geophones type HC201 n° 48 trace
 Couverture 48
 Source VAPORCHOC Profondeur 6 m
 P1 111 Streamer 1148
 250m

T.V. FILTER



DU PT *	DU PT *	DU PT *
267*	75*	1*
AU PT *	AU PT *	AU PT *
216*	75*	3*
V.HOV.*	V.HOV.*	V.HOV.*
EN W/S*	EN W/S*	EN W/S*
0.00		
2.00	1679	1601 1603
4.00	1950	1866 1927
6.00	2034	2022 2043
8.00	2148	2116 2105
10.00	2221	2209 2223
12.00	2300	2251 2298
14.00	2490	2381 2370
16.00	2567	2499 2485
18.00	2690	2567 2538
20.00	2767	2776 2705
22.00	2870	2858 2748
24.00	2919	2916 2816
26.00	2948	2934 2853
28.00	2944	2949 2916
30.00	3096	3071 3239
32.00	3275	3378 3504
34.00	3456	3387 3718
36.00	3653	3587 3893
38.00	3829	3767 4056
40.00	3988	3926 4203
42.00	4131	4075 4337
44.00	4262	4208 4458
46.00	4381	4329 4566
48.00	4490	4448 4669
50.00	4598	4563 4763



SNIA BPD S.p.A.
 G. Riccioli