

206-2-85  
 283 202 101  
 4877 840 320  
 4882 119  
 4882 119  
 33 34 36 37 39 41 42 43 45  
 181 126 180 176 200 226 260 276 300

1271156  
 808571  
 1 POL  
 1 TD  
 2 FILE1

CGG - DATA PROCESSING CENTRE  
 1 RUE LEON MORAUX 91341 MASSY CEDEX FRANCE

S.N.I.A. **A4543**

B - R206 - SU

SU-206-02-85

SW 101

300 NE

FILTERED 4800 0/0 STACK

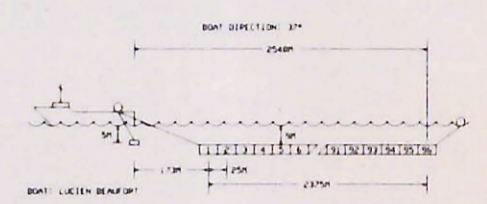
127 11 56 B

PL : 17F

DATE : MARCH 17, 1986

FIELD RECORDING

BOAT \*\* LUCIEN BEAUFORT \*\* ENERGY SOURCE \*\* STARJET  
 RECORDED BY CCG CAPACITY 2 SUBARRAYS (2 X 4 GUNS)  
 RECORDING DATE DECEMBER 03, 85 JETS 1-2, 3, 6 BY SUBARRAY  
 NAVIGATION SYSTEM SYLEDIS DEPTH 5 M  
 SP INTERVAL 25 M  
 \*\* INSTRUMENTS \*\* SN 358 \*\* STREAMER \*\* 2400 M  
 FORMAT 9 TRACKS 1600 BP1 DEPTH 9 M  
 FILTERS : BF 0 HZ - HF 154 HZ GROUPS 96  
 SAMPLING INTERVAL 2 MS GROUP INTERVAL 25 M  
 RECORDING LENGTH 6.5 HYDROPHONES 24 PER GROUP



DIGITAL PROCESSING IN 4 MS

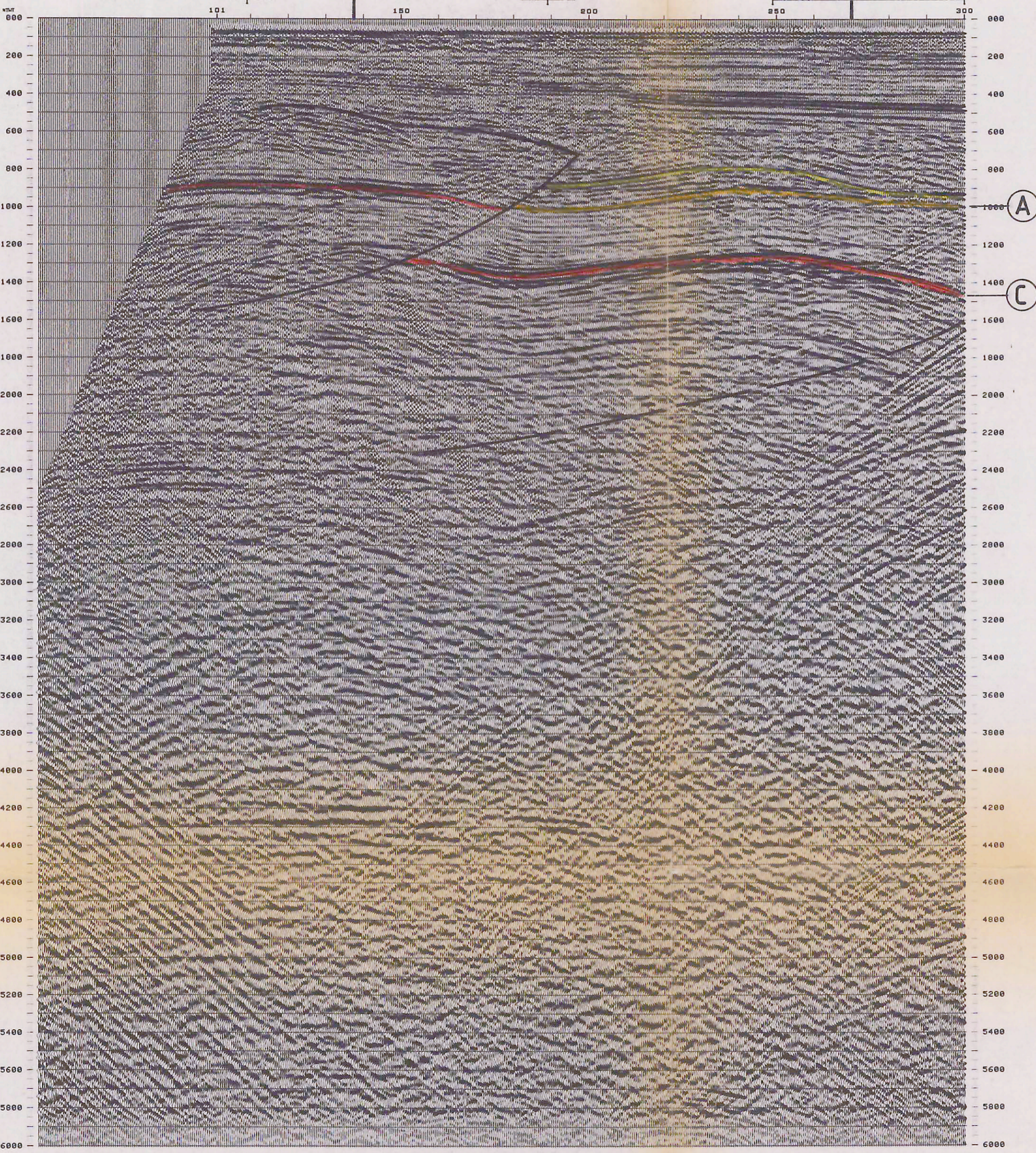
DEMULTIPLIXING FX FILTER (ANTI NOISE)  
 TRUE AMPLITUDE RECOVERY L 500 - 2200 M/S  
 DIVISION OF STARJET SIGNAL (UNPCD) TIME VARIANT FILTER  
 MUTES 12 - 62.5 HZ T 0 - 600 MS  
 PREDICTIVE DECONVOLUTION (TRITA) 9 - 52.5 HZ T 900 - 1600 MS  
 OPERATOR LENGTH : 232 MS 9 - 45 HZ T 1900 - 2700 MS  
 GAP : 4 MS 9 - 35 HZ T 3100 - 6000 MS  
 WINDOW : 300 - 2500 MS TRACE EQUALIZATION  
 VELOCITY ANALYSIS (1 ANJIT - 2 KM) L = 300 MS U 0 - 1100 MS  
 NMO CORRECTIONS L = 800 MS U 1100 - 6000 MS  
 STACK 4800 0/0 FOLD ANALOG DISPLAY  
 GUN AND CABLE DEPTH CORRECTION + 9MS SP NUMBER ON SECTION = POSITION TRACE 1

POLARITY

COMPRESSION WAVE = NEGATIVE NUMBER ON FIELD TAPE  
 = POSITIVE REFLECTION COEFFICIENT  
 AFTER PROCESSING = WHITE TROUGH ON CROSS SECTION

TIME ORIGIN

MEAN SEA LEVEL



1987

MARCA BOLLO

LIRE 500

SNIA BPD Sp.A.

*Clusman Meltham*

206-1-85  
 206-3-85  
 206-4-85  
 206-5-85  
 206-6-85  
 206-7-85  
 206-10-85

SNIA BPD DIVISIONE MINERARIA MILANO All. n° 3

SEZIONE SISMICA RAPPRESENTATIVA

GIUGNO '87