

A4499



AGIP OFFSHORE ITALY B. R200

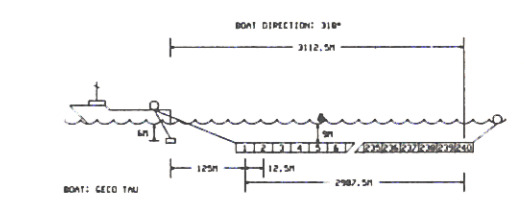
LINE B 84- 350 NW 100 763 SE

FILTERED 6000 0/0 STACK

PARTY : 127-M7-35 PL: 1122

FIELD RECORDING (GECO)

** BOAT ** GECO TRU ** SOURCE ** AIR GUN
NAVIGATION SYSTEM SYLEDIS DEPTH 6 M
SHOT BY GECO CAPACITY 2813 CU. IN.
RECORDING DATE APRIL 13-85 SP INTERVAL 25 M
** INSTRUMENTS ** 2 X DFS 5 ** STREAMER ** 3000 M
FORMAT SEG D 9 TRACKS 6250 BPI DEPTH 9 M
FILTER 5.3-90 HZ GROUPS 240 TRACKS
SAMPLING 4 MS GROUP INTERVAL 12.5 M
RECORDING LENGTH 6 S



DIGITAL PROCESSING RATE 4 MS

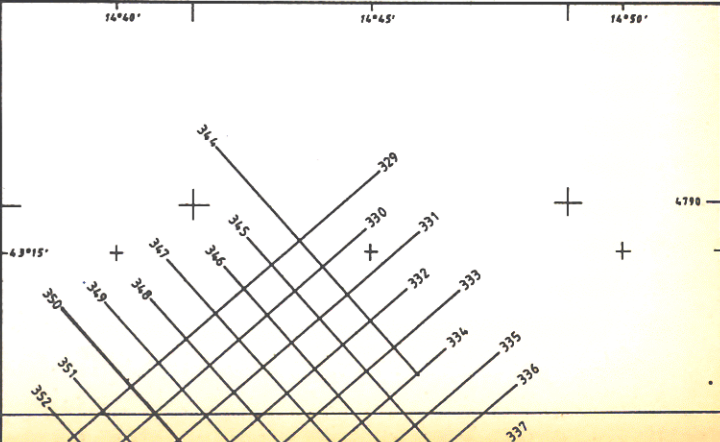
DEFALTIMPLXING PREDICTIVE DECONVOLUTION
TRUE AMPLITUDE RECOVERY (PAM) DESIGN GATE 0-2500 HS
KILLING EVERY 2ND TRACE APPLIC. GATE 0-5000 HS
MUTING OPERATOR LENGTH 300 HS
PREDICTIVE DECONVOLUTION CAP 24 HS
DESIGN GATE 0-2500 HS WHITE NOISE 1 0/0
APPLIC. GATE 0-5000 HS TIME UNITARY FILTER
OPERATOR LENGTH 200 HS 12 / 60 HZ 0-1200 HS
CAP 8 HS 10 / 45 HZ 2200 HS
WHITE NOISE 1 0/0 10 / 35 HZ 5000 HS
ANTIMULTIPLE F.V. VELOCITY FILTER 10 / 30 HZ 5000 HS
VELOCITY ANALYSIS TRACE EQUALIZATION
NO CORRECTIONS GUN AND CABLE STATIC CORRECTIONS
STACK 6000 0/0 (+ 10 HS)

POLARITY

COMPRESSION WAVE = NEGATIVE NUMBER ON TAPE
= POSITIVE REFLECTION COEFFICIENT
AFTER PROCESSING = WHITE TROUGH ON CROSS SECTION

TIME ORIGIN

MEAN SEA LEVEL



Allegato 2 Data Dis.n.
FEBB. 89 233517

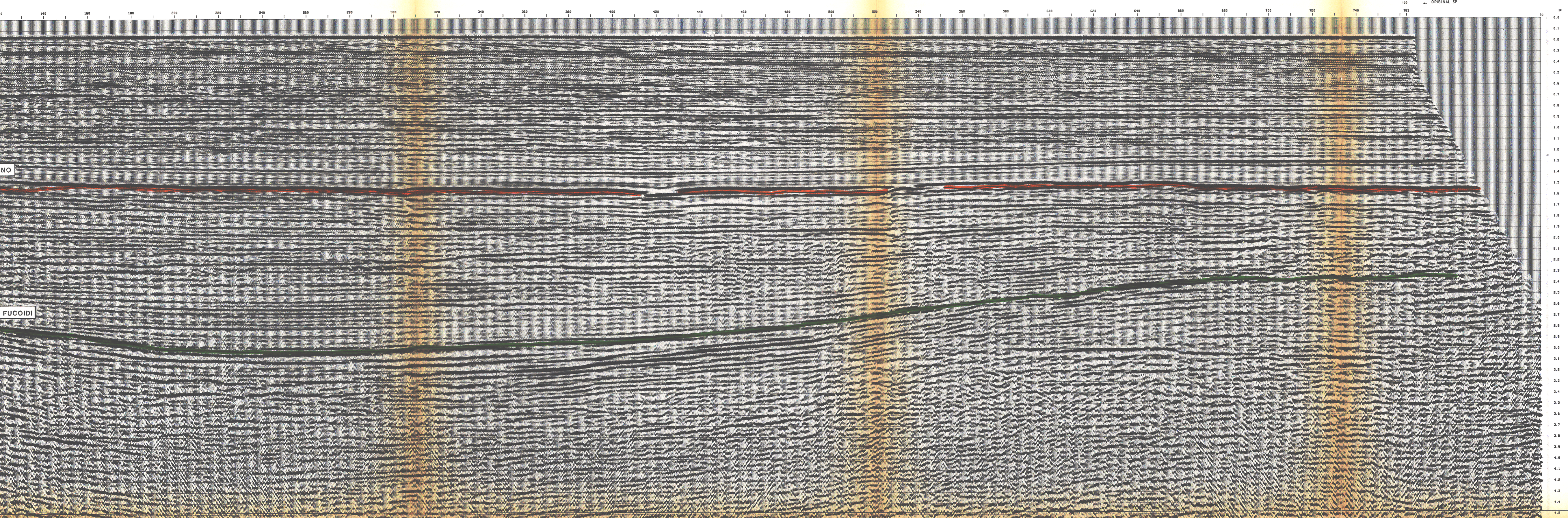


Table with 3 columns: TIME, MODEL, INTVL. Values for various shot points and models.

Table with 3 columns: TIME, MODEL, INTVL. Values for various shot points and models.

Table with 3 columns: TIME, MODEL, INTVL. Values for various shot points and models.

Table with 3 columns: TIME, MODEL, INTVL. Values for various shot points and models.

Table with 3 columns: TIME, MODEL, INTVL. Values for various shot points and models.

Table with 3 columns: TIME, MODEL, INTVL. Values for various shot points and models.