

Petrex S.p.A.

PERMESSO

BR 194 PX



Autore

M. Cacciola

Disegnatore

A. Pizzochero

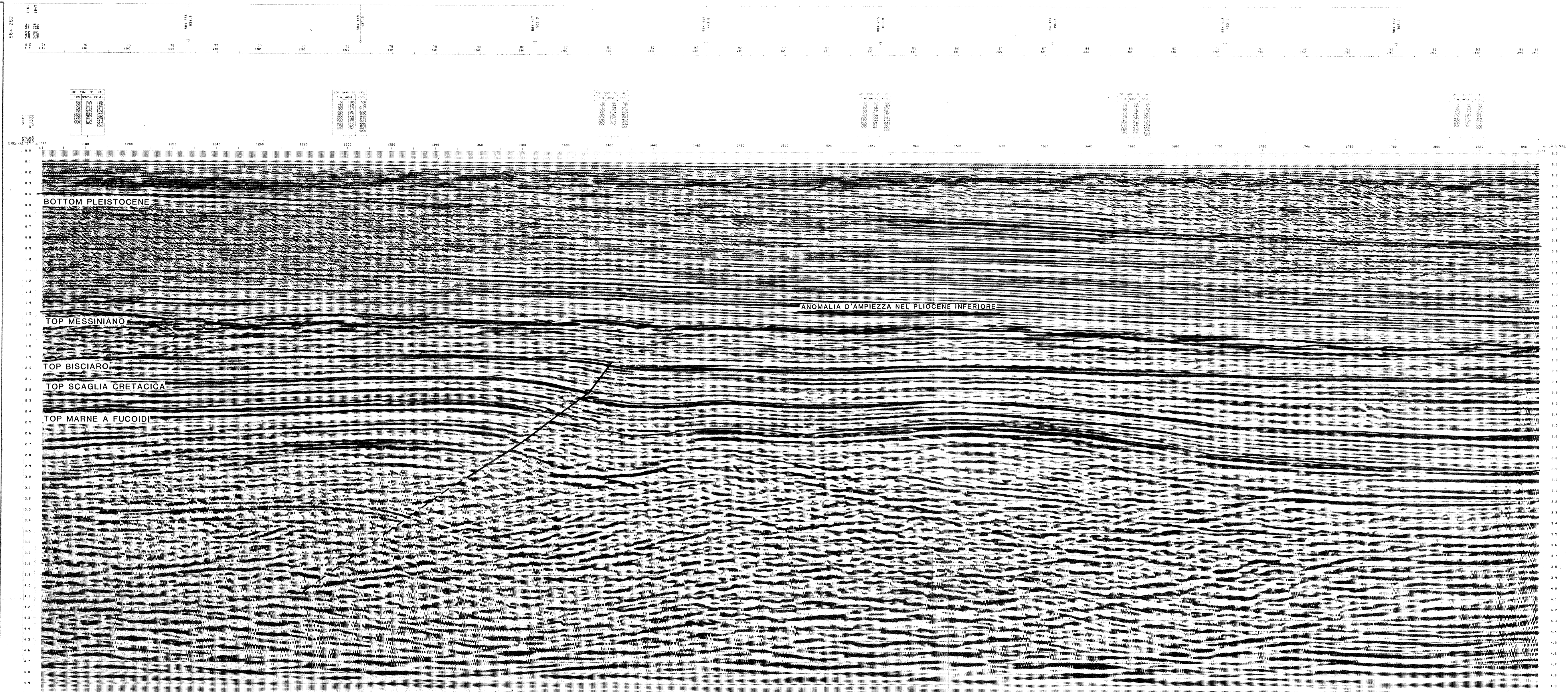
Allegato

2

**LINEA SISMICA
B 84 - 262 INTERPRETATA**

EQUIDISTANZA m sec t d

Data **AGOSTO 1987** Scala **RIDOTTA** Disegno n° **GL 87052**



PETREX
OFFSHORE ITALY B. R194. PX
LINE B 84- 262
WSU 1161 1847 ENE

TIME MIGRATION
PARTY : 127-N7-35 PL: 1677 M
DATE: NOV 19 85

FIELD RECORDING (GECO)

SHOT	DEPT	SOURCE	WTR
WHLIGHT SYSTEM	SHEETS	DEPTH	4250 CU. IN.
RECORDING DATE	APRIL 83-85	SP. INTERVAL	25 M
INSTRUMENTS	2 X OFS 5	STRAWER	3000 M
FORMAT	SEC 0 5 TRACKS 4250 BPI	DEPTH	10 M
FILTER	5.3-40 HZ	GROUPS	240 TRACKS
SAMPLING	4 MS	GROUP INTERVAL	12.5 M
RECORDING LENGTH	6.5		

DIGITAL PROCESSING RATE 4 MS

DEMULTIPLEXING	TRUE AMPLITUDE RECOVERY (FAM)	SIGNAL COHERENCE ENHANCEMENT (MCO)
KILLING EVERY 2ND TRACE	500-5000 MS 50 0-10 OF MODEL	5000-5000 MS 50 0-10 OF MODEL
ANTINOISE F.V. VELOCITY FILTER	500-1000 MS 3000 MS ATTENUATED	TIME MIGRATION
PREDICTIVE DECONVOLUTION	DESIGN DATE... 300-3000 MS	APPLIC. GATE... 5000 MS
DESIGN DATE... 300-3000 MS	APPLIC. GATE... 5000 MS	OPERATOR LENGTH... 300 MS
APPLIC. GATE... 5000 MS	OPERATOR LENGTH... 300 MS	WHITE NOISE... 1 0-10
WHITE NOISE... 1 0-10		
VELOCITY ANALYSIS	TRACE EQUALIZATION	QUANT AND ENHANCE STRETCH CORRECTIONS
STRETCH 5000 0-10	DIGITAL DISPLAY	
PREDICTIVE DECONVOLUTION	DESIGN DATE... 300-3000 MS	APPLIC. GATE... 5000 MS
DESIGN DATE... 300-3000 MS	APPLIC. GATE... 5000 MS	OPERATOR LENGTH... 300 MS
APPLIC. GATE... 5000 MS	OPERATOR LENGTH... 300 MS	WHITE NOISE... 1 0-10
WHITE NOISE... 1 0-10		

POLARITY
COMPRESSION WAVE = NEGATIVE NUMBER ON TIME
REFLECTION COEFFICIENT
AFTER PROCESSING = WHITE TROUGH ON CROSS SECTION

TIME ORIGIN
MEAN SEA LEVEL

