



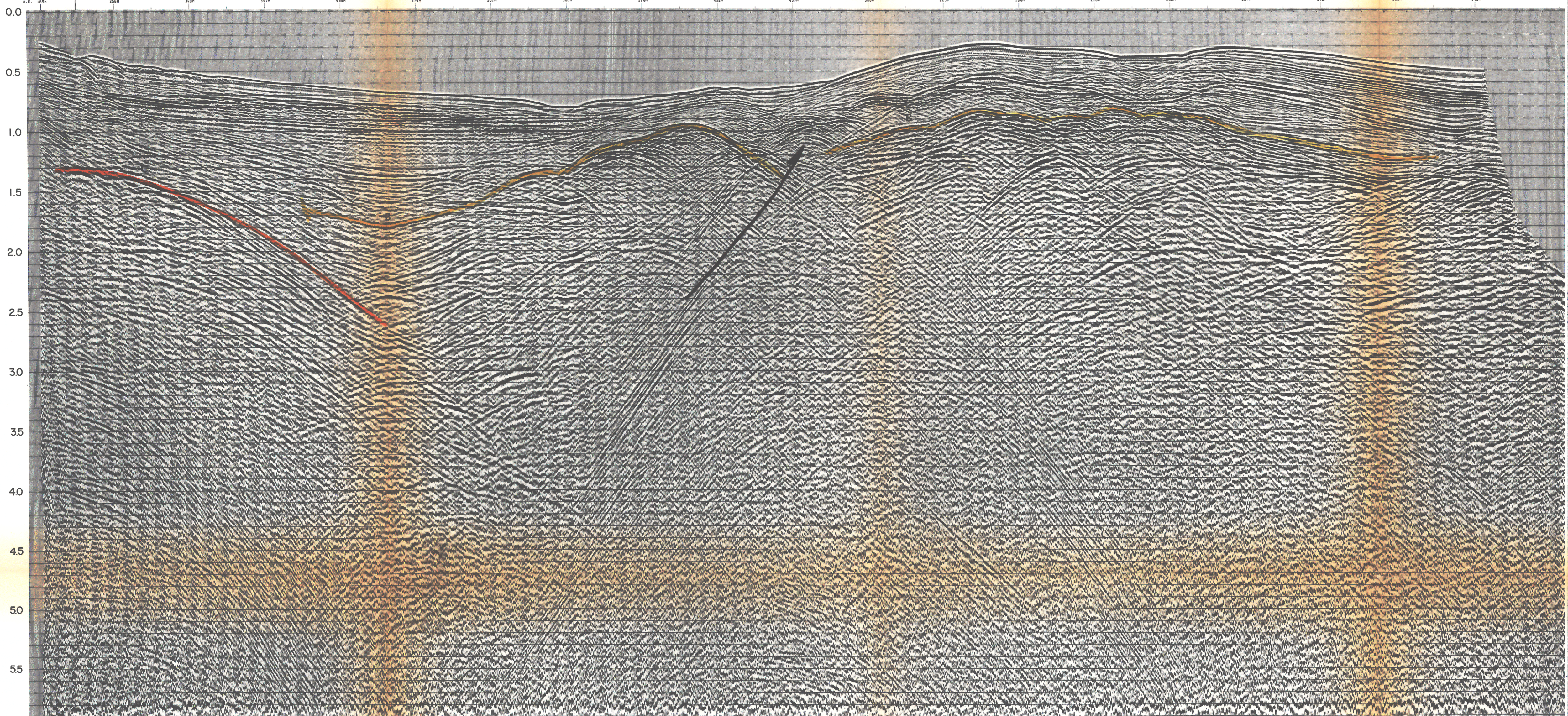
SOUTHWEST

A 4386

ALL. 10

LINE: FR313-78
 S.P. 1 TO 381

TIME	MS	VEL	DIS	INT
0.00	1500	1500	1500	1500
0.05	1500	1500	1500	1500
0.10	1500	1500	1500	1500
0.15	1500	1500	1500	1500
0.20	1500	1500	1500	1500
0.25	1500	1500	1500	1500
0.30	1500	1500	1500	1500
0.35	1500	1500	1500	1500
0.40	1500	1500	1500	1500
0.45	1500	1500	1500	1500
0.50	1500	1500	1500	1500
0.55	1500	1500	1500	1500
0.60	1500	1500	1500	1500
0.65	1500	1500	1500	1500
0.70	1500	1500	1500	1500
0.75	1500	1500	1500	1500
0.80	1500	1500	1500	1500
0.85	1500	1500	1500	1500
0.90	1500	1500	1500	1500
0.95	1500	1500	1500	1500
1.00	1500	1500	1500	1500
1.05	1500	1500	1500	1500
1.10	1500	1500	1500	1500
1.15	1500	1500	1500	1500
1.20	1500	1500	1500	1500
1.25	1500	1500	1500	1500
1.30	1500	1500	1500	1500
1.35	1500	1500	1500	1500
1.40	1500	1500	1500	1500
1.45	1500	1500	1500	1500
1.50	1500	1500	1500	1500
1.55	1500	1500	1500	1500
1.60	1500	1500	1500	1500
1.65	1500	1500	1500	1500
1.70	1500	1500	1500	1500
1.75	1500	1500	1500	1500
1.80	1500	1500	1500	1500
1.85	1500	1500	1500	1500
1.90	1500	1500	1500	1500
1.95	1500	1500	1500	1500
2.00	1500	1500	1500	1500
2.05	1500	1500	1500	1500
2.10	1500	1500	1500	1500
2.15	1500	1500	1500	1500
2.20	1500	1500	1500	1500
2.25	1500	1500	1500	1500
2.30	1500	1500	1500	1500
2.35	1500	1500	1500	1500
2.40	1500	1500	1500	1500
2.45	1500	1500	1500	1500
2.50	1500	1500	1500	1500
2.55	1500	1500	1500	1500
2.60	1500	1500	1500	1500
2.65	1500	1500	1500	1500
2.70	1500	1500	1500	1500
2.75	1500	1500	1500	1500
2.80	1500	1500	1500	1500
2.85	1500	1500	1500	1500
2.90	1500	1500	1500	1500
2.95	1500	1500	1500	1500
3.00	1500	1500	1500	1500
3.05	1500	1500	1500	1500
3.10	1500	1500	1500	1500
3.15	1500	1500	1500	1500
3.20	1500	1500	1500	1500
3.25	1500	1500	1500	1500
3.30	1500	1500	1500	1500
3.35	1500	1500	1500	1500
3.40	1500	1500	1500	1500
3.45	1500	1500	1500	1500
3.50	1500	1500	1500	1500
3.55	1500	1500	1500	1500
3.60	1500	1500	1500	1500
3.65	1500	1500	1500	1500
3.70	1500	1500	1500	1500
3.75	1500	1500	1500	1500
3.80	1500	1500	1500	1500
3.85	1500	1500	1500	1500
3.90	1500	1500	1500	1500
3.95	1500	1500	1500	1500
4.00	1500	1500	1500	1500



AGIP

WESTERN GEOPHYSICAL
 COMPANY OF AMERICA

OFFSHORE ITALY		M.G.C. CONTRACT NO. 99 PROCESSED IN LONDON DIGITAL CENTRE JAN. 1979 DATE SHOT OCT/NOV. 1978	
RECORDING DATA		PROCESSING SEQUENCE	
NAVIGATION PRIMARY NAVIGATION PART 82 SECONDARY NAVIGATION 101 MSV MAP/SECTION LOCATION C.D.P.		EDIT SUBSAMPLE TO 4MS S.A.	
SOURCE SOURCE PULSE 9.1 H GUN DEPTH 0 NUMBER OF GUNS 40 FPS PER HR 50 S.P. INTERVAL 50 H		U.B.S. TYPE MIN. PHASE INVERSE FILTER WINDOW LENGTH 1 2500 MS LENGTH OF AUTOCORRELATION 160 MS LENGTH OF OPERATOR 150 MS MIN. PREDICTION LAG 4 MS MAX. GAIN-INCREASING ZONES 128-1024 MS	
INSTRUMENTS AMPLIFIER LMS 880 FILTER 10-125HE/1000/1000-125HE 7800/1000 RECORD LENGTH 8 SECS SAMPLE RATE 2 MS FORMAT SEG C ; 1000 DPT ; 98 CH		N.M.D. 4800X STACK TIME VARIATION FILTER TIME (SECS) L.C. (HE/DO/DO) H.C. 2.500 20 / 24 80 / 88 1.000 20 / 24 80 / 88 1.500 12 / 24 60 / 88 2.500 8 / 18 60 / 88 5.000 6 / 18 35 / 48	
CABLE CABLES 85 WINDSHAWNS 20 PER GROUP, LINEAR ARRAY CABLE LENGTH 25 H GROUP INTERVAL 25 H CABLE DEPTH 11		COMMENTS DATUM PLANE IS SEA LEVEL A GUN AND B CABLE CORRECTION OF 14 MS HAS BEEN APPLIED. COMPRESSION PULSES RECORD AS NEGATIVE NUMBERS ON TAPE AND PLOT AS TROUGHS UNLESS ON PLAINTEXT.	
SCALES HORIZONTAL 1:110,748 VERTICAL 1:10 CM/SEC 5 CM/SEC		LEGEND INTERSECTIONS WATER DEPTH VELOCITY ANALYSIS D.C. FOR M.G.C. J. J. D.	
LINE LOCATION MAP 			