

# FB-20-86EXT

S.P. 86 TO S.P. 435

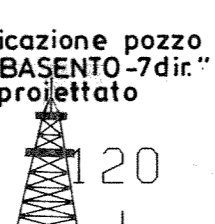
1000% DBS-RAP  
NORMAL POLARITY

FB-20-86

SP	101.50
0.00	1760
0.05	1760
0.10	1760
0.15	1760
0.20	1760
0.25	1760
0.30	1760
0.35	1760
0.40	1760
0.45	1760
0.50	1760

FB-20-84  
SP-180

SP 108



SP	142.50
0.00	1760
0.05	1760
0.10	1760
0.15	1760
0.20	1760
0.25	1760
0.30	1760
0.35	1760
0.40	1760
0.45	1760
0.50	1760

FB-27-86  
SP-127

SP 143

SP	137.50
0.00	1760
0.05	1760
0.10	1760
0.15	1760
0.20	1760
0.25	1760
0.30	1760
0.35	1760
0.40	1760
0.45	1760
0.50	1760

FB-13-82  
SP-215.8

SP 178

SP	212.50
0.00	1760
0.05	1760
0.10	1760
0.15	1760
0.20	1760
0.25	1760
0.30	1760
0.35	1760
0.40	1760
0.45	1760
0.50	1760

FB-12-82  
SP-151

SP 213

SP	227.50
0.00	1760
0.05	1760
0.10	1760
0.15	1760
0.20	1760
0.25	1760
0.30	1760
0.35	1760
0.40	1760
0.45	1760
0.50	1760

FB-24-84  
SP-160.2

SP 228

SP	257.50
0.00	1760
0.05	1760
0.10	1760
0.15	1760
0.20	1760
0.25	1760
0.30	1760
0.35	1760
0.40	1760
0.45	1760
0.50	1760

FB-5-77  
SP-208

SP 258

SP	292.50
0.00	1760
0.05	1760
0.10	1760
0.15	1760
0.20	1760
0.25	1760
0.30	1760
0.35	1760
0.40	1760
0.45	1760
0.50	1760

FB-28-86  
SP-109.5

SP 293

SP	327.50
0.00	1760
0.05	1760
0.10	1760
0.15	1760
0.20	1760
0.25	1760
0.30	1760
0.35	1760
0.40	1760
0.45	1760
0.50	1760

FB-6-77  
SP-214.6

SP 328

SP	362.50
0.00	1760
0.05	1760
0.10	1760
0.15	1760
0.20	1760
0.25	1760
0.30	1760
0.35	1760
0.40	1760
0.45	1760
0.50	1760

FB-7-77  
SP-105.5

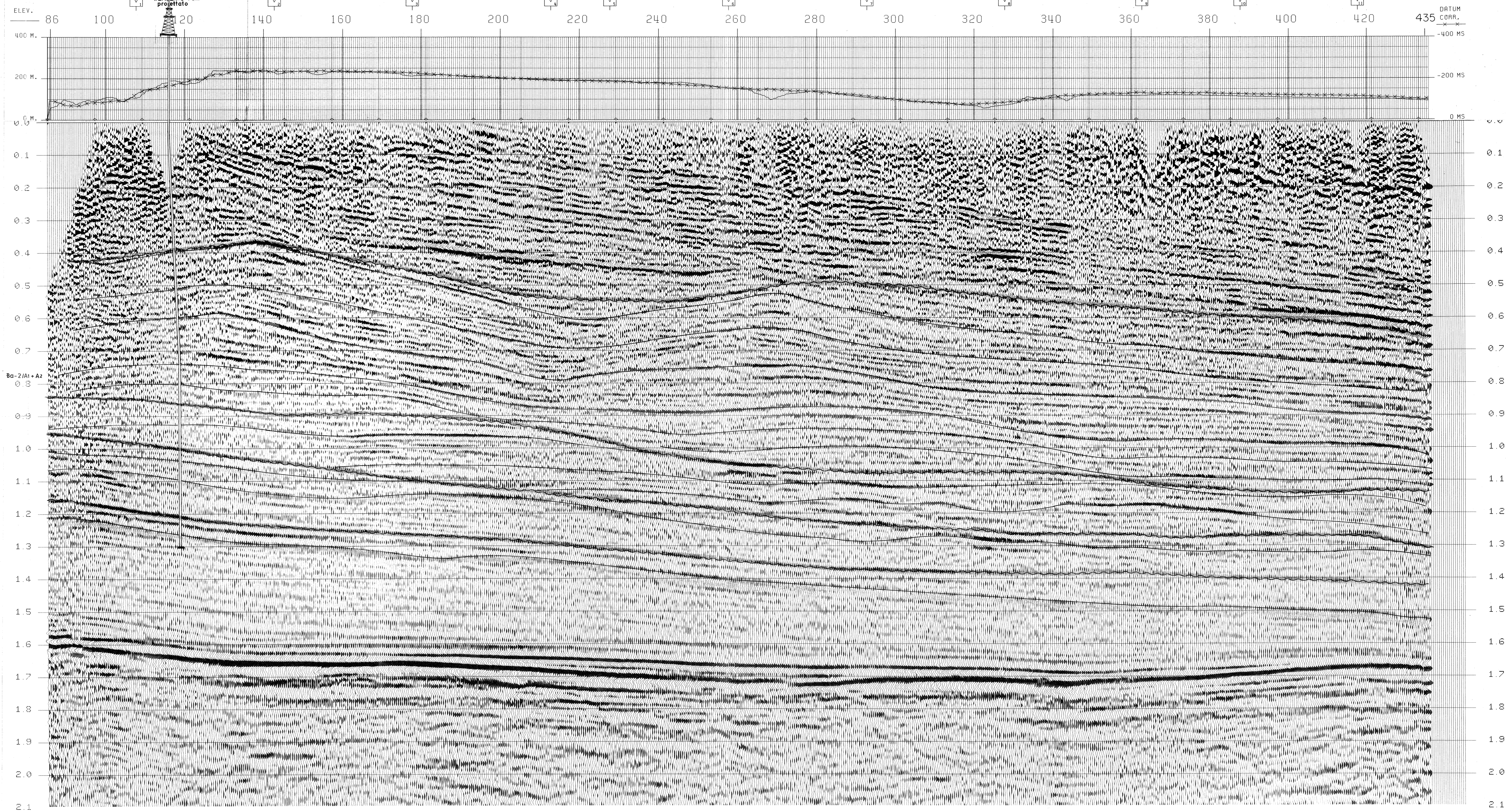
SP 363

SP	387.50
0.00	1760
0.05	1760
0.10	1760
0.15	1760
0.20	1760
0.25	1760
0.30	1760
0.35	1760
0.40	1760
0.45	1760
0.50	1760

SP 388

SP	417.50
0.00	1760
0.05	1760
0.10	1760
0.15	1760
0.20	1760
0.25	1760
0.30	1760
0.35	1760
0.40	1760
0.45	1760
0.50	1760

SP 418



**SNIA BPD**  
WESTERN RICERCHE GEOFISICHE  
MILAN - ITALY

AREA ITALIA  
PERMESSO F. BASENTO

DATE SHOT: JULY 1986  
DATE PROCESSED: SEPTEMBER 1986

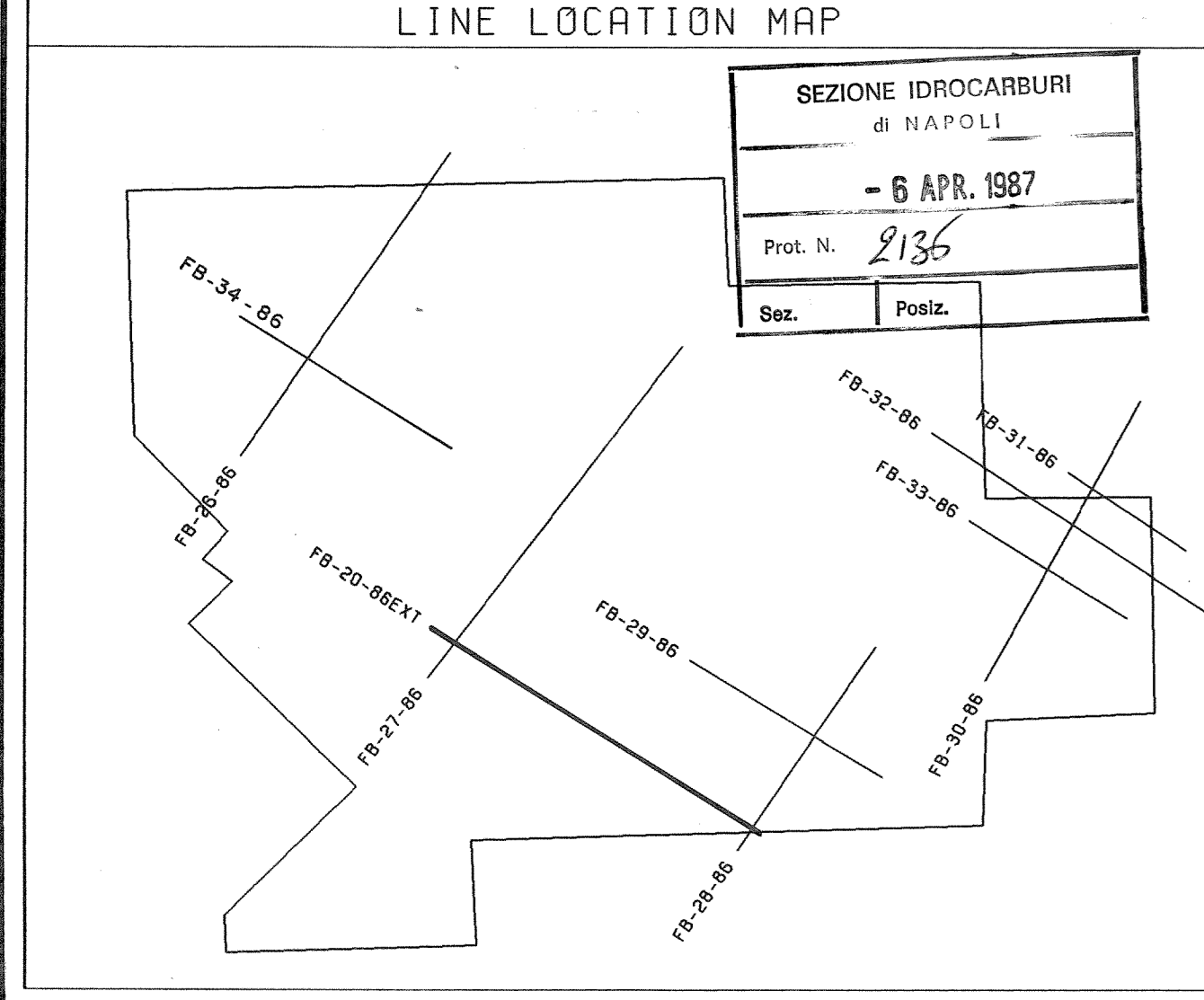
RECORDING DATA		PROCESSING SEQUENCE	
PARTY NUMBER: S.I.A.G. 03	RECORDER: DFS V 11	EDIT GEO. AMPL. SR 2MS LENGTH 6SEC.	PREFILTER
GRIN: 12/128	RECORDING FILTER (HZ): 50 HZ	PREPROCESSOR/DECON	DECON TYPE: MINIMUM PHASE INVERSE FILTER
NOTCH FILTER: 50 HZ	RECORD LENGTH: 65C	NO. OF WINDOWS: 1	PREDICTION DISTANCE: 2-120 MS
SAMPLE RATE (MS): 5	SUBSURFACE COVERAGE: 1000 PCT	NO. OF WINDOWS: 1	STRETCH DEPENDENT MUTE: 142PCT
GROUP INTERVAL (METERS): 30	NUMBER OF GROUPS: 60	STRETCH DEPENDENT MUTE: 142PCT	STRETCH DEPENDENT MUTE: 142PCT
STATIC COMPUTATION VELOCITY: 2000 M/S	DATUM PLANE (ABOVE SEA LEVEL): 0 M	STRETCH DEPENDENT MUTE: 142PCT	STRETCH DEPENDENT MUTE: 142PCT

SPREAD DIMENSIONS: 30 15M 15M 60

SEISMOMETER ARRAY: X 000000 Y 000000

GEOPHONE TYPE: SENSO 3N 4U  
GEOPHONE FREQUENCY: 10-HZ  
GEOPHONE GROUP: 24

ENERGY SOURCE: DYNAMITE  
SHOT HOLES/F.P.: 3K  
AVERAGE CHARGE/SHOT: 45.0



SNIA BPD DIVISIONE MINERARIA MILANO

Scale: 1:10000

Alt. n° 1 Data MAR. 87 N° Arch.

Concessione "FIUME BASENTO"

SEZIONE SISMICA INTERPRETATA FB-20-86EXT  
CON UBICAZIONE POZZO "F. BASENTO-7 DIR. .."