

Party: 127.11.60  
**ADRIATIC SEA**  
**AREA B. R 154.ME**  
 SW 490 **LINE BR154.09** 1 NE  
 BOAT MOTION ←  
 PL N°609 A **STACK 4800% DBAS.TVF.AMCO-D** DEC 19 80

**FIELD RECORDING 4800 %**  
 Contractor C. G. G.

**DIGITAL PROCESSING P5**  
 Sequence in 4 ms

**SHIP**  
 POLAR BJØRN  
 NAVIGATION BY SYLEDIS  
 SHOOTING DATE SEPT 29 80

**INSTRUMENTS**  
 SN 338 floating point  
 FORMAT 9 tracks 1600 BPH  
 FILTER 9/125  
 SAMPLING 2 ms

**SOURCE**  
 VAPORCHOC  
 DEPTH 5.04 m  
 CAPACITY 1 monopet PV 80 valves  
 SP INTERVAL single bubble configuration 1500-3500 ms

**STREAMER**  
 LENGTH 2400 m  
 DEPTH 14 m  
 GROUPS 96  
 GROUP INTERVAL 25 m  
 GEOPHONES HC 202 24 / TRACE

**DECONVOLUTION**  
 Operator Length 300 ms  
 Windows 0-2000 ms  
 1300-3500 ms

**VELOCITY ANALYSIS**  
 NMO CORRECTIONS (Linear interpolation between velocity functions)

**STACK 4800 %**  
 PREDICTIVE DECONVOLUTION (TRITA)  
 Operator Length 280 ms Gap 32 ms  
 Windows 0-2000 ms  
 1500-3500 ms

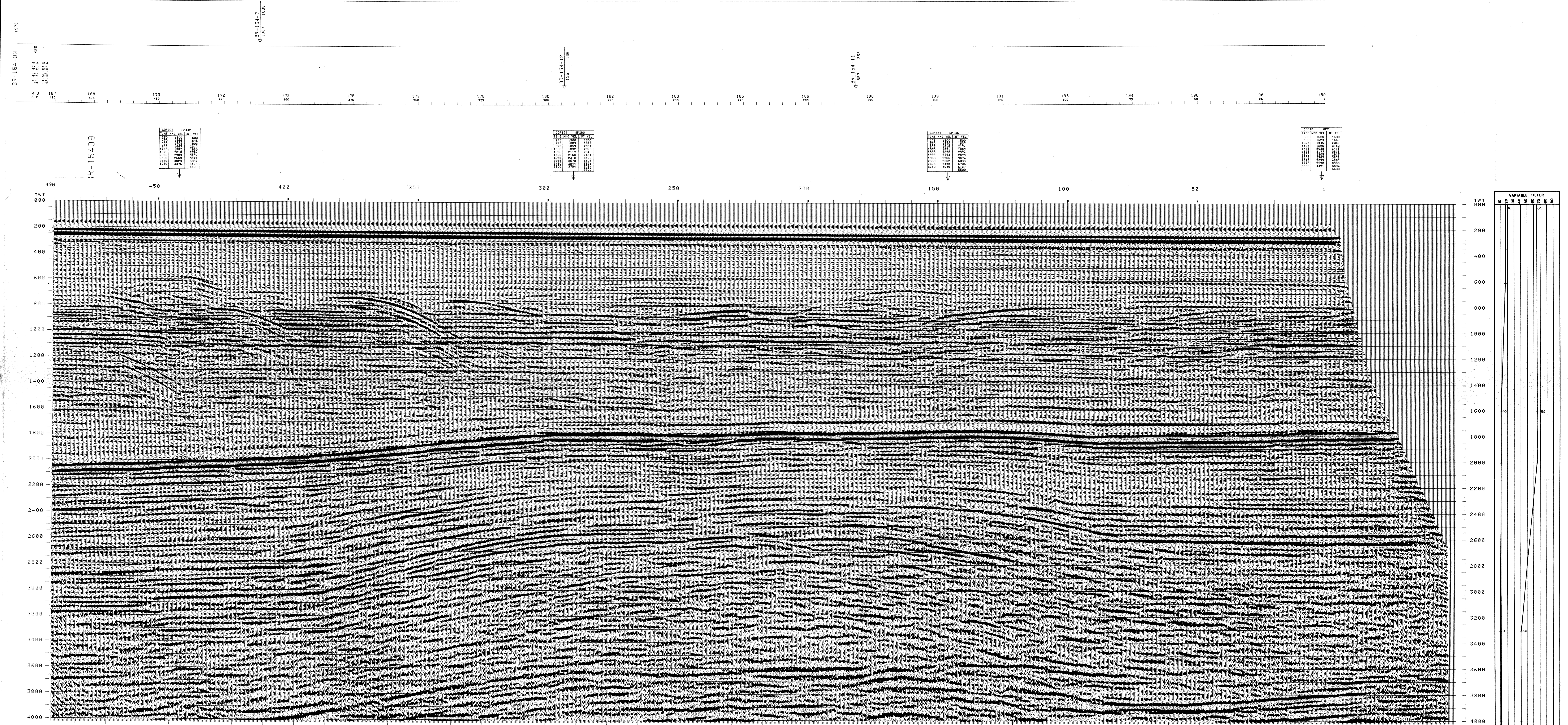
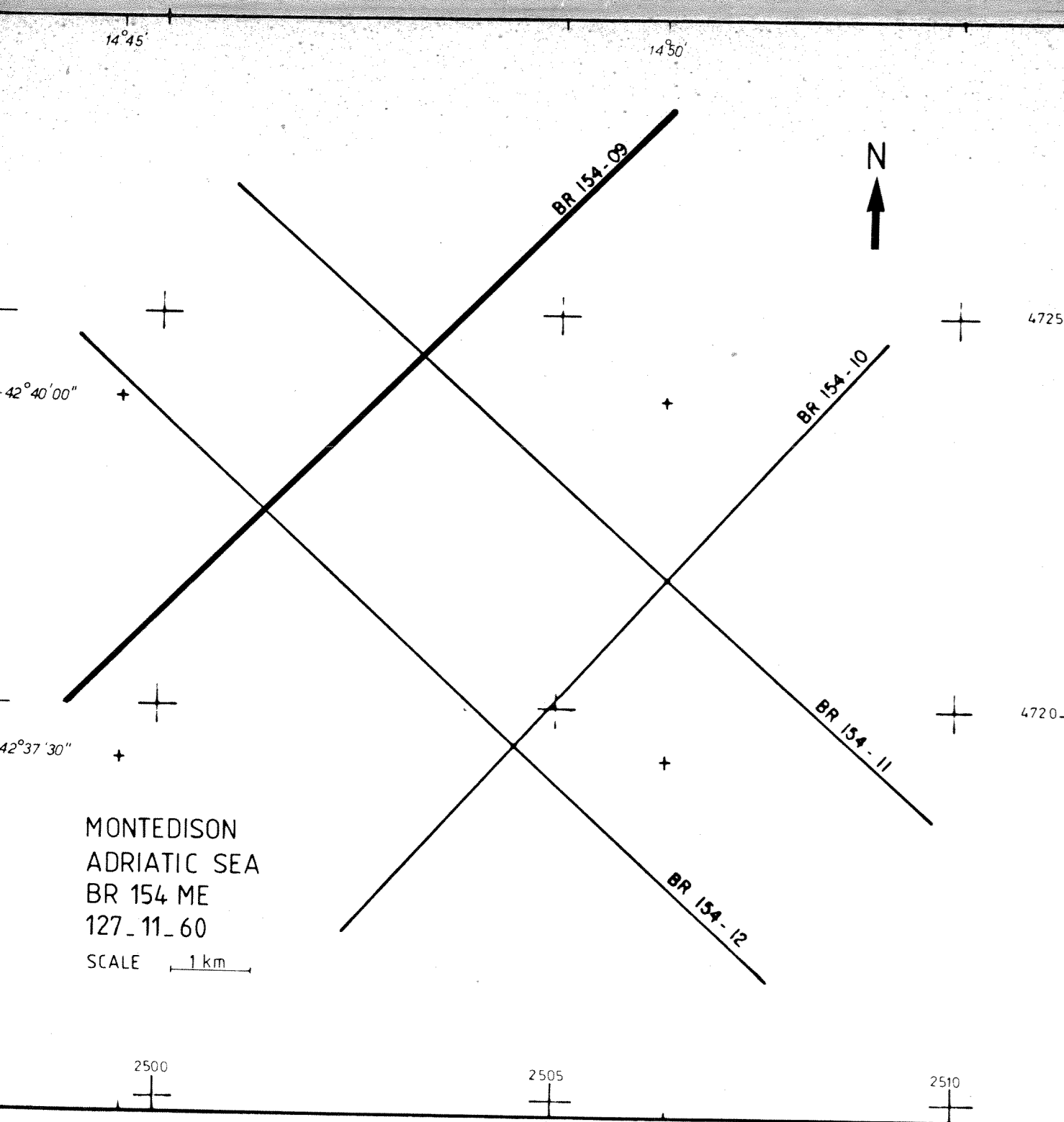
**TIME VARIANT FILTER**  
 SPATIAL COHERENCE ENHANCEMENT (AMCO-D)  
 TRACE EQUALIZATION  
 ANALOG DISPLAY (Static correction +13 ms)

**POLARITY**  
 Geophone compression: negative number on field tape  
 Black peak on display: positive reflection coefficient

**TIME ORIGIN SEA LEVEL**  
 Source and streamer static correction +13 ms

**HORIZONTAL SCALE**  
 500m  
 80 Traces/km

**COMPAGNIE GENERALE DE GEOPHYSIQUE**  
 6, Rue Galvani, 93001 - MASTY - FRANCE



BR-154-09  
 1978  
 490  
 1  
 167 490  
 168 475  
 170 450  
 172 425  
 173 400  
 175 375  
 177 350  
 178 325  
 180 300  
 182 275  
 183 250  
 184 225  
 186 200  
 188 175  
 189 150  
 191 125  
 193 100  
 194 75  
 196 50  
 198 25  
 199 0

IR-15409

CDP#	SP#	TIME	NMO	VEL	INT	VEL
250	1500	1500	1500	1500	1500	1500
251	1500	1500	1500	1500	1500	1500
252	1500	1500	1500	1500	1500	1500
253	1500	1500	1500	1500	1500	1500
254	1500	1500	1500	1500	1500	1500
255	1500	1500	1500	1500	1500	1500
256	1500	1500	1500	1500	1500	1500
257	1500	1500	1500	1500	1500	1500
258	1500	1500	1500	1500	1500	1500
259	1500	1500	1500	1500	1500	1500
260	1500	1500	1500	1500	1500	1500

CDP#	SP#	TIME	NMO	VEL	INT	VEL
475	1680	1680	1680	1680	1680	1680
476	1680	1680	1680	1680	1680	1680
477	1680	1680	1680	1680	1680	1680
478	1680	1680	1680	1680	1680	1680
479	1680	1680	1680	1680	1680	1680
480	1680	1680	1680	1680	1680	1680
481	1680	1680	1680	1680	1680	1680
482	1680	1680	1680	1680	1680	1680
483	1680	1680	1680	1680	1680	1680
484	1680	1680	1680	1680	1680	1680
485	1680	1680	1680	1680	1680	1680

CDP#	SP#	TIME	NMO	VEL	INT	VEL
650	1870	1870	1870	1870	1870	1870
651	1870	1870	1870	1870	1870	1870
652	1870	1870	1870	1870	1870	1870
653	1870	1870	1870	1870	1870	1870
654	1870	1870	1870	1870	1870	1870
655	1870	1870	1870	1870	1870	1870
656	1870	1870	1870	1870	1870	1870
657	1870	1870	1870	1870	1870	1870
658	1870	1870	1870	1870	1870	1870
659	1870	1870	1870	1870	1870	1870
660	1870	1870	1870	1870	1870	1870

CDP#	SP#	TIME	NMO	VEL	INT	VEL
1000	2000	2000	2000	2000	2000	2000
1001	2000	2000	2000	2000	2000	2000
1002	2000	2000	2000	2000	2000	2000
1003	2000	2000	2000	2000	2000	2000
1004	2000	2000	2000	2000	2000	2000
1005	2000	2000	2000	2000	2000	2000
1006	2000	2000	2000	2000	2000	2000
1007	2000	2000	2000	2000	2000	2000
1008	2000	2000	2000	2000	2000	2000
1009	2000	2000	2000	2000	2000	2000
1010	2000	2000	2000	2000	2000	2000

VARIABLE FILTER  
 0 20 40 60 80 100 120 140 160 180 200 220 240 260 280 300 320 340 360 380 400