

WATER DEPTH



SEFEL S.p.A.
SEFEL



REGIONE (CONCORDATA)
 G. ROMA
 17 NOV. 1974
 Part. N. 4899

SEFEL J. & ASSOCIATES
 DATA PROCESSING CONSULTANTS
 (LONDON)

CLIENT **MONTEDISON**
 PROSPECT **NORTH ADRIATIC SEA**
PERMIT BR 154
TVF STACK
SEA LEVEL DATUM
SP 1 TO SP 495
 LINE 08 DIRECTION **S.E.**

FIELD PARAMETERS
 RECORDED BY GEOPHYSICAL OFFSHORE EXPLORATION
 RECORDING DATE **APRIL 1976**
 VESSEL **M/V GØEL EGEDE**
 INSTRUMENTS **LRS-000 CBBA-1 SEQ-C FORMAT**
 RECORD LENGTH **5.0 SECONDS**
 SAMPLE INTERVAL **2 MSEC**
 RECORDING FILTER **6/124 HZ**
 SOURCE **16 AIR GUNS**
 TOTAL GUN CAPACITY **2430 CU. IN**
 OPERATING PRESSURE **2000 PSI**
 GUN DEPTH **7.6 METRES**
 CABLE **44 GROUPS - 32 HYDROPHONES/GROUP**
 CABLE DEPTH **12.2 METRES**
 CENTRE OF GUNS TO CENTRE OF NEAR GROUP **203 M**
 GROUP INTERVAL **50 METRES**
 SHOT INTERVAL **25 METRES**
 RECORDING FOLD **4400 PERCENT**
 PRIMARY NAVIGATION **TRISPANDER**
 SECONDARY NAVIGATION **SAT NAV**

PROCESSING SEQUENCE
 1 DEMULTIPLY AND BINARY GAIN RECOVERY
 INCLUDES RESAMPLING TO 4 MSEC
 2 SYNTHETIC GAIN CURVE APPLICATION
 3 CDP TRACE GATHER TO 4400 PERCENT
 5.0 SECOND DATA LENGTH
 INCLUDES NEAR TRACE DISPLAY
 INCLUDES EDITING
 4 FILTER
 5/60 HZ BANDPASS - 320 MSEC B.L.
 5 DECONVOLUTION - W.L. LEAST SQUARES
 200 MSEC OPERATOR LENGTH
 32 MSEC PREDICTION TIME
 WINDOW - WB-50 MS TO WB+2950 MS
 SLOPE OF 1660 MS ACROSS 44 TRACES
 6 VELOCITY ANALYSES
 CONSTANT VELOCITY STACKS
 7 NMO REMOVAL
 8 FIRST BREAK MUTE
 0-220 200-255 400-270 750-355
 2500-2555
 9 STACK TO 4400 PERCENT
 BULK STATIC - DATUM CORRECTION
 11 TIME VARIANT FILTER
 10/50 HZ BANDPASS FROM WB TO 1.5
 10/40 HZ BANDPASS FROM 3.0 TO END
 1500 MSEC OVERLAP ZONE
 12 TIME VARIANT EQUALIZATION
 13 FILM DISPLAY
 10 CM/SEC VERTICAL SCALE
 8 CM = 1 KM HORIZONTAL SCALE

COMMENTS
NORMAL POLARITY
 GC GEOPHYSICIST J.A.S. DATE **JULY / 1978**

TIME	VRMS	VINT
0	1450	1459
250	1460	1721
500	1640	1721
750	1880	2711
1000	1880	2711
1250	2000	2743
1500	2200	2743
1750	2200	2743
2000	2200	2743
2250	2200	2743
2500	2200	2743
2750	2200	2743
3000	2200	2743
3250	2200	2743
3500	2200	2743
3750	2200	2743
4000	2200	2743
4250	2200	2743
4500	2200	2743
4750	2200	2743
5000	2200	2743

TIME	VRMS	VINT
0	1450	1459
250	1460	1721
500	1640	1721
750	1880	2711
1000	1880	2711
1250	2000	2743
1500	2200	2743
1750	2200	2743
2000	2200	2743
2250	2200	2743
2500	2200	2743
2750	2200	2743
3000	2200	2743
3250	2200	2743
3500	2200	2743
3750	2200	2743
4000	2200	2743
4250	2200	2743
4500	2200	2743
4750	2200	2743
5000	2200	2743

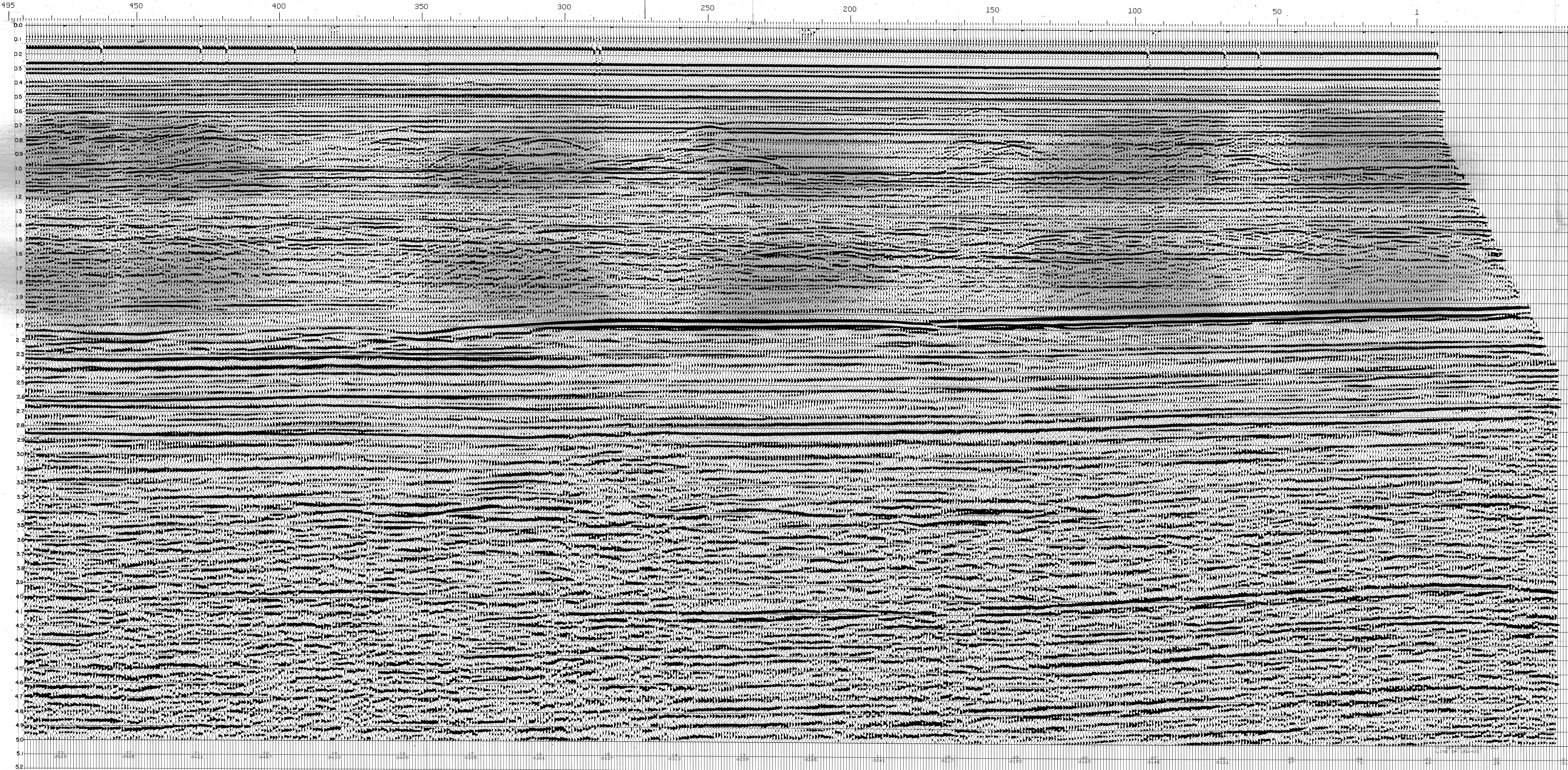
TIME	VRMS	VINT
0	1450	1459
250	1460	1721
500	1640	1721
750	1880	2711
1000	1880	2711
1250	2000	2743
1500	2200	2743
1750	2200	2743
2000	2200	2743
2250	2200	2743
2500	2200	2743
2750	2200	2743
3000	2200	2743
3250	2200	2743
3500	2200	2743
3750	2200	2743
4000	2200	2743
4250	2200	2743
4500	2200	2743
4750	2200	2743
5000	2200	2743

TIME	VRMS	VINT
0	1450	1459
250	1460	1721
500	1640	1721
750	1880	2711
1000	1880	2711
1250	2000	2743
1500	2200	2743
1750	2200	2743
2000	2200	2743
2250	2200	2743
2500	2200	2743
2750	2200	2743
3000	2200	2743
3250	2200	2743
3500	2200	2743
3750	2200	2743
4000	2200	2743
4250	2200	2743
4500	2200	2743
4750	2200	2743
5000	2200	2743

TIME	VRMS	VINT
0	1450	1459
250	1460	1721
500	1640	1721
750	1880	2711
1000	1880	2711
1250	2000	2743
1500	2200	2743
1750	2200	2743
2000	2200	2743
2250	2200	2743
2500	2200	2743
2750	2200	2743
3000	2200	2743
3250	2200	2743
3500	2200	2743
3750	2200	2743
4000	2200	2743
4250	2200	2743
4500	2200	2743
4750	2200	2743
5000	2200	2743

TIME	VRMS	VINT
0	1450	1459
250	1460	1721
500	1640	1721
750	1880	2711
1000	1880	2711
1250	2000	2743
1500	2200	2743
1750	2200	2743
2000	2200	2743
2250	2200	2743
2500	2200	2743
2750	2200	2743
3000	2200	2743
3250	2200	2743
3500	2200	2743
3750	2200	2743
4000	2200	2743
4250	2200	2743
4500	2200	2743
4750	2200	2743
5000	2200	2743

TIME	VRMS	VINT
0	1450	1459
250	1460	1721
500	1640	1721
750	1880	2711
1000	1880	2711
1250	2000	2743
1500	2200	2743
1750	2200	2743
2000	2200	2743
2250	2200	2743
2500	2200	2743
2750	2200	2743
3000	2200	2743
3250	2200	2743
3500	2200	2743
3750	2200	2743
4000	2200	2743
4250	2200	2743
4500	2200	2743
4750	2200	2743
5000	2200	2743



BR154-05
 SP 24