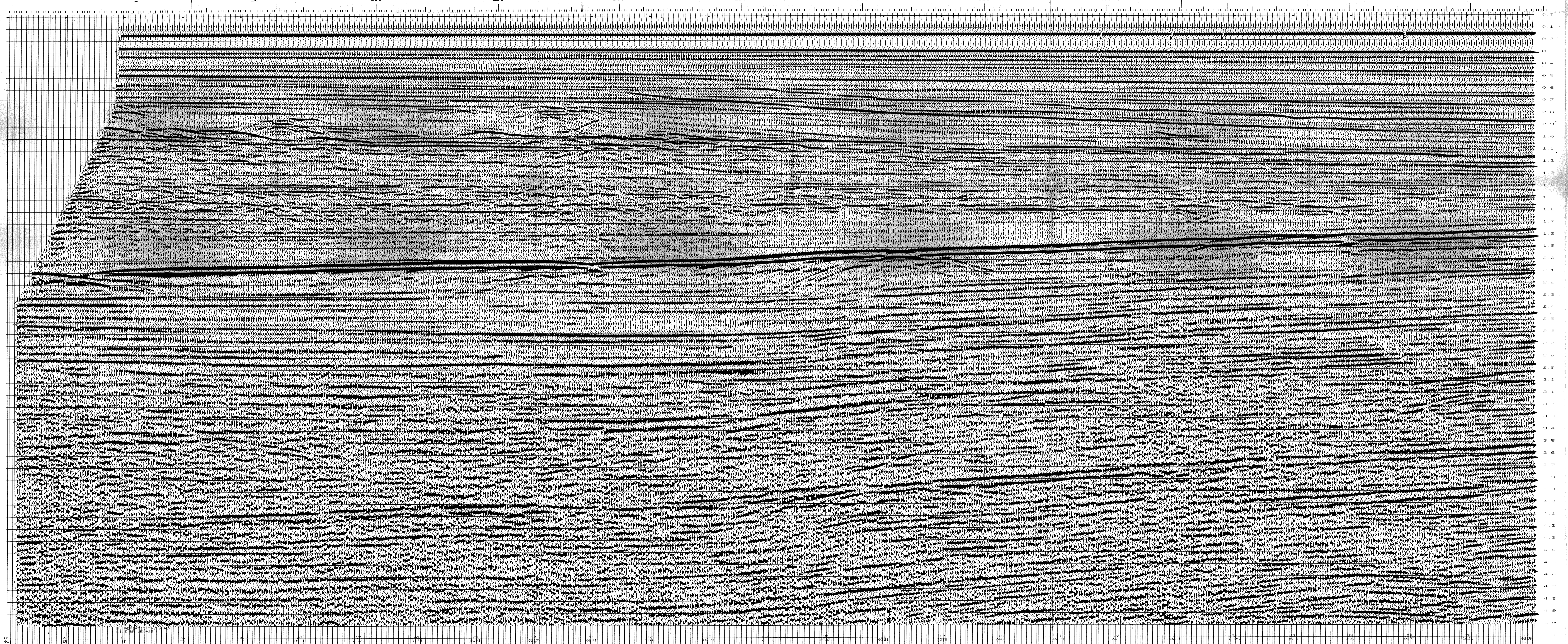


TIME	VRMS	VINT
200	1480	1460
250	1480	1459
300	1480	1459
350	1480	1459
400	1480	1459
450	1480	1459
500	1480	1459
550	1480	1459
600	1480	1459
650	1480	1459
700	1480	1459
750	1480	1459
800	1480	1459
850	1480	1459
900	1480	1459
950	1480	1459
1000	1480	1459
1050	1480	1459
1100	1480	1459
1150	1480	1459
1200	1480	1459
1250	1480	1459
1300	1480	1459
1350	1480	1459
1400	1480	1459
1450	1480	1459
1500	1480	1459
1550	1480	1459
1600	1480	1459
1650	1480	1459
1700	1480	1459
1750	1480	1459
1800	1480	1459
1850	1480	1459
1900	1480	1459
1950	1480	1459
2000	1480	1459
2050	1480	1459
2100	1480	1459
2150	1480	1459
2200	1480	1459
2250	1480	1459
2300	1480	1459
2350	1480	1459
2400	1480	1459
2450	1480	1459
2500	1480	1459
2550	1480	1459
2600	1480	1459
2650	1480	1459
2700	1480	1459
2750	1480	1459
2800	1480	1459
2850	1480	1459
2900	1480	1459
2950	1480	1459
3000	1480	1459
3050	1480	1459
3100	1480	1459
3150	1480	1459
3200	1480	1459
3250	1480	1459
3300	1480	1459
3350	1480	1459
3400	1480	1459
3450	1480	1459
3500	1480	1459
3550	1480	1459
3600	1480	1459
3650	1480	1459
3700	1480	1459
3750	1480	1459
3800	1480	1459
3850	1480	1459
3900	1480	1459
3950	1480	1459
4000	1480	1459
4050	1480	1459
4100	1480	1459
4150	1480	1459
4200	1480	1459
4250	1480	1459
4300	1480	1459
4350	1480	1459
4400	1480	1459
4450	1480	1459
4500	1480	1459
4550	1480	1459
4600	1480	1459
4650	1480	1459
4700	1480	1459
4750	1480	1459
4800	1480	1459
4850	1480	1459
4900	1480	1459
4950	1480	1459
5000	1480	1459



SEFEL J. & ASSOCIATES
 DATA PROCESSING CONSULTANTS
 (LONDON)

CLIENT MONTEDISON
 PROSPECT NORTH ADRIATIC SEA
 PERMIT BR 154
 TVF STACK
 SEA LEVEL DATUM
 SP 1 TO SP 581
 LINE 05 DIRECTION N.E. →

FIELD PARAMETERS

RECORDED BY GEOPHYSICAL OFFSHORE EXPLORATION
 RECORDING DATE APRIL 1978
 VESSEL M/V GØBEL EGEDE
 INSTRUMENTS LRS-888 CBBA-1 SEG-C FORMAT
 RECORD LENGTH 5.0 SECONDS
 SAMPLE INTERVAL 2 MSEC
 RECORDING FILTER 6/124 HZ
 SOURCE 16 AIR GUNS
 TOTAL GUN CAPACITY 2450 CU. IN
 OPERATING PRESSURE 2000 PSI
 GUN DEPTH 7.6 METRES
 CABLE 44 GROUPS - 32 HYDROPHONES/GROUP
 CABLE DEPTH 12.2 METRES
 CENTRE OF GUNS TO CENTRE OF NEAR GROUP 205 M
 GROUP INTERVAL 50 METRES
 SHOT INTERVAL 25 METRES
 RECORDING FOLD 4400 PERCENT
 PRIMARY NAVIGATION TRISPANDER
 SECONDARY NAVIGATION SAT NAV

PROCESSING SEQUENCE

- DEMULTEPLEX AND BINARY GAIN RECOVERY
 INCLUDES RESAMPLING TO 4 MSEC
- SYNTHETIC GAIN CURVE APPLICATION
- CDP TRACE GATHER TO 4400 PERCENT
 5.0 SECOND DATA LENGTH
 INCLUDES NEAR TRACE DISPLAY
 INCLUDES EDITING
- FILTER
 5/60 HZ BANDPASS - 320 MSEC 8. L.
- DECONVOLUTION - W. L. LEAST SQUARES
 200 MSEC OPERATOR LENGTH
 32 MSEC PREDICTION TIME
 WINDOW - WB-50 MS TO WB+2950 MS
 SLOPE OF 1660 MS ACROSS 44 TRACES
- VELOCITY ANALYSES
 CONSTANT VELOCITY STACKS
- NM8 REMOVAL
- FIRST BREAK MUTE
 0-220 200-253 400-270 750-353
 2500-2353
- STACK TO 4400 PERCENT
 BULK STATIC - DATUM CORRECTION
- TIME VARIANT FILTER
 10/50 HZ BANDPASS FROM WB TO 1.5
 10/40 HZ BANDPASS FROM 3.0 TO END
 1500 MSEC OVERLAP ZONE
- TIME VARIANT EQUALIZATION
- FILM DISPLAY
 10 CM/SEC VERTICAL SCALE
 8 CM = 1 KM HORIZONTAL SCALE

COMMENTS

NORMAL POLARITY

GC GEOPHYSICIST J.A.S. DATE JULY/1978