

A-4293

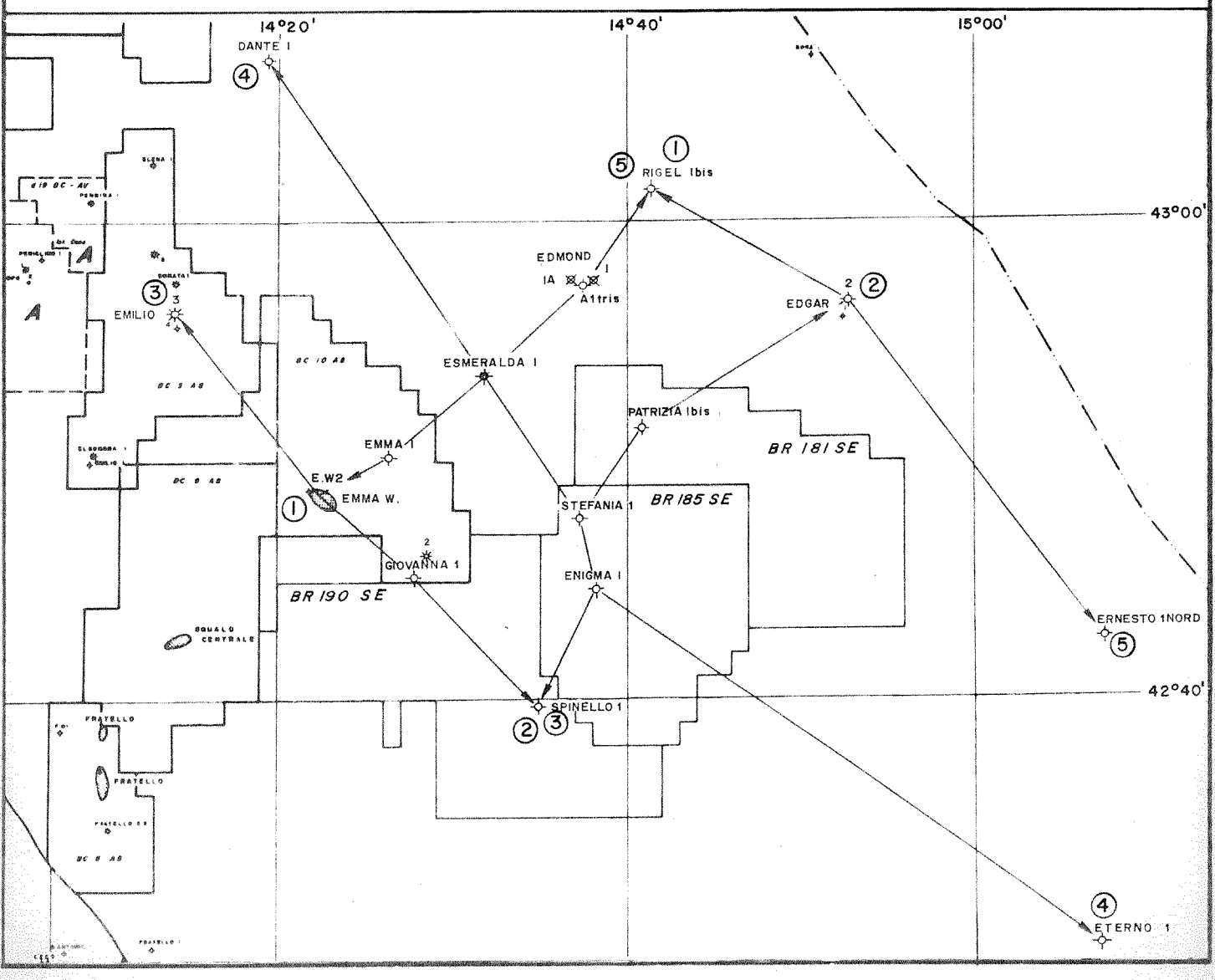
PETROMARINE
ITALIA S.p.A.

PERMITS BR 181-185-190 SE

STRATIGRAPHIC, ELECTRIC CORRELATION N° 3

Author: A. AMATO
Horizontal Sc. 1:200,000
Vertical Sc. 1:8,000
Attached to: GEOLOGICAL - GEOPHYSICAL INTERPRETATION
Date: SEPT. 1985
Sketch No. 0410
D.P. ANHYDRITE BASE
All. No. 6

INDEX MAP

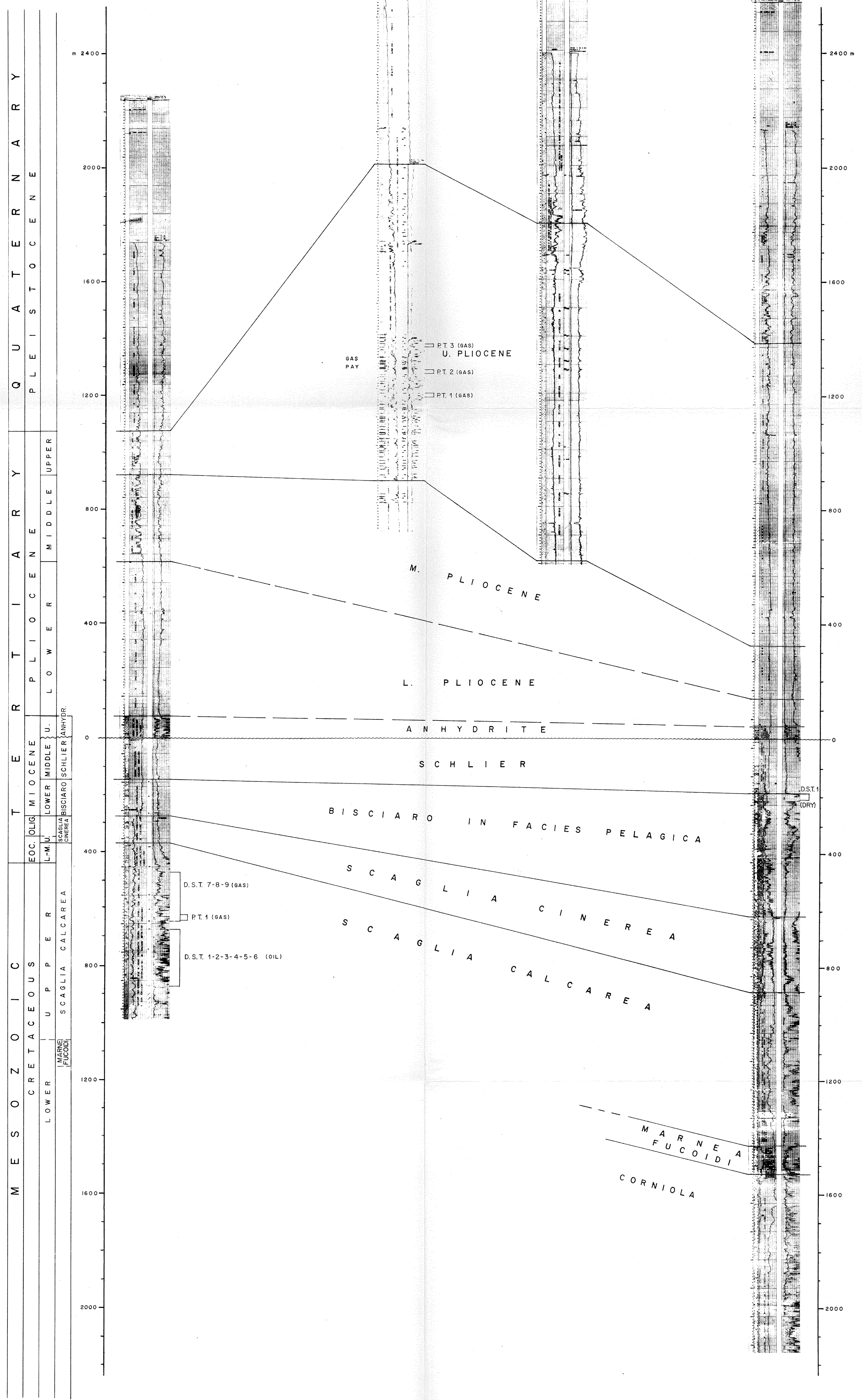


EMILIO 3

EMMA W. 2

GIOVANNA 1

SPINELLO 1



M E S O Z O I C
C R E T A C E O U S
L O W E R
M A R N E F U C C I D I
S C A G L I A C A L C A R E A
U P P E R
S C A G L I A C A L C A R E A
L - M I
L O W E R M I D D L E U.
S C A G L I A C H I E R A
S C A G L I A S C H I E R A
A N H Y D R I T E
P L I O C E N E
L O W E R
M I D D L E
U P P E R
T E R T I A R I A
P L I O C E N E
M I D D L E
U P P E R
Q U A T E R N A R I A
P L E I S T O C E N E

B I S C I A R O I N F A C I E S P E L A G I C A
S C A G L I A C I N E R E A
S C A G L I A C A L C A R E A

M. P L I O C E N E
L. P L I O C E N E

U. P L I O C E N E
P T 3 (GAS)
P T 2 (GAS)
P T 1 (GAS)

M A R N E A F U C C I D I
C O R N I O L A

D.S.T. 7-8-9 (GAS)
P.T. 1 (GAS)
D.S.T. 1-2-3-4-5-6 (OIL)

D.S.T. 1 (DRY)