

LINE B84-189

V1		
ST	VS	VT
0.181	1.581	1.581
0.263	1.553	1.688
0.361	1.521	1.776
0.504	1.500	1.852
0.689	1.782	1.944
0.985	1.842	2.078
1.170	1.950	2.262
1.508	2.057	2.494
1.973	2.283	2.797
2.475	2.497	3.203
2.625	2.692	4.884
2.853	3.001	5.430
3.174	3.355	5.580
3.392	4.075	6.114
4.367	4.578	6.182
6.000	4.858	6.200

V2			V3		
ST	VS	VT	ST	VS	VT
0.181	1.581	1.581	0.181	1.581	1.581
0.263	1.553	1.688	0.254	1.633	1.783
0.361	1.521	1.776	0.349	1.697	1.852
0.504	1.500	1.852	0.504	1.756	1.951
0.689	1.782	1.944	0.586	1.852	2.057
0.985	1.842	2.078	1.133	1.935	2.237
1.170	1.950	2.262	1.443	2.003	2.465
1.508	2.057	2.494	1.951	2.294	2.824
1.973	2.283	2.797	2.395	2.493	3.258
2.475	2.497	3.203	2.625	2.692	4.884
2.625	2.692	4.884	2.853	3.001	5.430
2.853	3.001	5.430	3.174	3.355	5.580
3.174	3.355	5.580	3.392	4.075	6.114
3.392	4.075	6.114	4.367	4.578	6.182
4.367	4.578	6.182	6.000	4.858	6.200

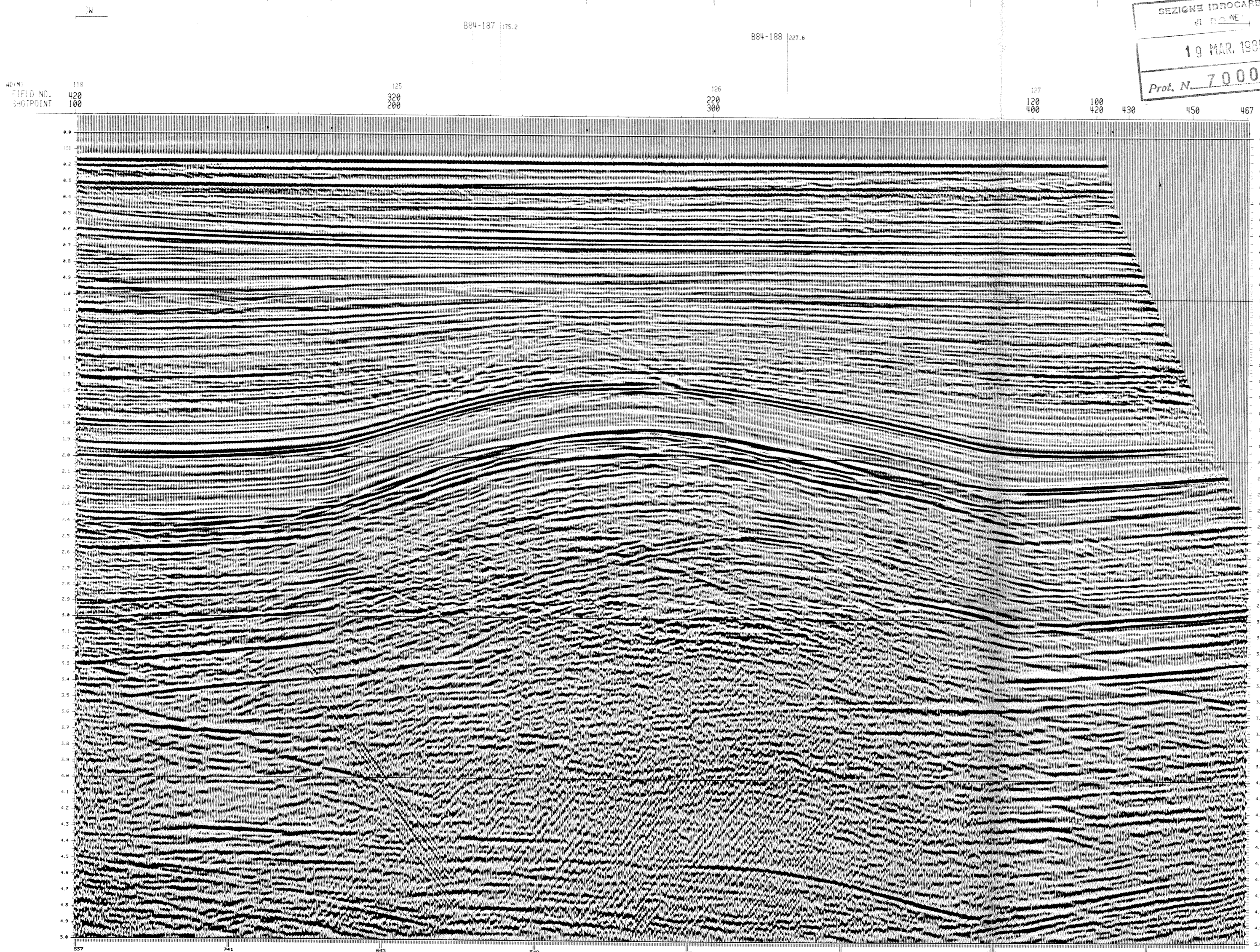
V4		
ST	VS	VT
0.175	1.581	1.581
0.248	1.553	1.782
0.346	1.521	1.789
0.438	1.631	1.851
0.586	1.778	1.954
0.837	1.848	2.078
1.097	1.921	2.218
1.389	1.997	2.358
1.555	2.408	2.478
1.979	2.174	2.578
2.134	2.416	3.745
2.408	2.723	4.185
3.078	3.277	4.924
3.987	4.019	5.873
5.000	4.535	6.159
6.000	4.852	6.200

V5		
ST	VS	VT
0.170	1.581	1.581
0.247	1.562	1.699
0.350	1.628	1.788
0.450	1.698	1.854
0.634	1.772	1.939
0.865	1.843	2.067
1.096	1.916	2.213
1.311	1.997	2.368
1.583	2.109	2.581
1.899	2.218	2.711
2.158	2.421	3.565
2.486	2.721	4.159
3.078	3.245	4.858
3.987	4.063	5.807
5.000	4.562	6.164
6.000	4.874	6.200

V6		
ST	VS	VT
0.160	1.581	1.581
0.244	1.562	1.698
0.345	1.631	1.796
0.443	1.701	1.854
0.707	1.777	1.942
0.987	1.858	2.067
1.186	1.926	2.236
1.321	2.012	2.405
1.580	2.256	2.731
2.194	2.366	3.007
2.481	2.659	4.620
2.760	3.035	4.883
3.196	3.465	5.451
4.204	4.005	6.342
5.812	4.576	6.147
6.000	4.882	6.200

V7		
ST	VS	VT
0.175	1.581	1.581
0.255	1.561	1.726
0.353	1.635	1.773
0.586	1.783	1.851
0.705	1.788	1.962
0.981	1.858	2.114
1.123	1.935	2.221
1.355	2.031	2.443
1.939	2.282	2.779
2.193	2.399	3.198
2.399	2.647	4.406
2.743	3.042	4.947
3.132	3.495	5.583
3.398	4.117	6.375
5.000	4.587	6.100
6.000	4.898	6.200

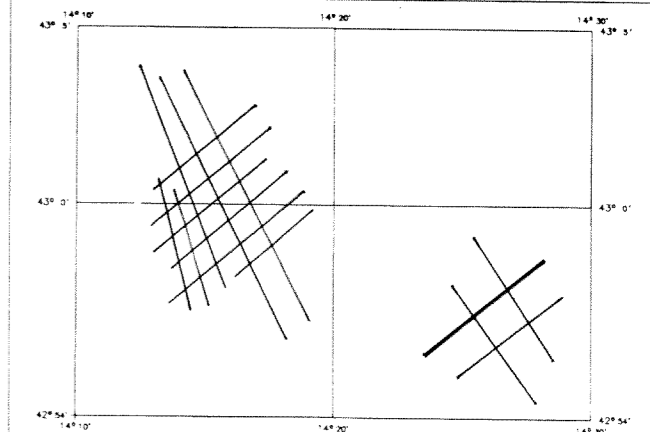
V8		
ST	VS	VT
0.175	1.581	1.581
0.255	1.561	1.726
0.353	1.635	1.773
0.586	1.783	1.851
0.705	1.788	1.962
0.981	1.858	2.114
1.123	1.935	2.221
1.355	2.031	2.443
1.939	2.282	2.779
2.193	2.399	3.198
2.399	2.647	4.406
2.743	3.042	4.947
3.132	3.495	5.583
3.398	4.117	6.375
5.000	4.587	6.100
6.000	4.898	6.200



SEZIONE IDROCARBURI  
di D.O.M.E.  
19 MAR. 1985  
Prof. N. 7000

**Petrex**

ADRIATIC SEA  
LINE: B84-189  
SP 100 TO SP 420\*  
SOUTH-WEST  
DBAS TV-FILTERED  
PERMITS BR163.PX / R189.PX



RECORDED BY:  
HORIZON EXPLORATION LTD.  
BOAT:  
NORTHERN HORIZON  
DATE:  
APRIL 1984  
PROCESSED BY:  
8540350  
SERVINGSGRUPPE  
SUPERVISOR: WEBER, J.  
DATE:  
15. 09. 1984

RECORDING DATA  
SOURCE: TYPE BOLT PAR AIRGUNS CABLE: 2400 M PRAKIA-SEISMO STREAHER  
GUN DEPTH: 5 M CENTRE ARRAY TO CENTRE NEAR TRACE 105 M  
NUMBER OF GUNS: 5 HYDROPHONES / SECTION 120  
VOLUME: 1620 CU IN. TYPE WH-0045 ( LRS-2510 )  
PRESSURE: 2000 P.S.I. NO. OF GROUPS: 96  
SHOT INTERVAL: 25 M GROUP LENGTH:  
CABLE DEPTH: 55 M CABLE DEPTH: 7-10 M AVERAGE  
DISTANCE ANTENNA - SOURCE CENTRE: 85 M

RECORDING SYSTEM: DFS V  
RECORD LENGTH: 4.0 SEC  
RECORDING FOLD: 48 FOLD, 96 TRACES  
SAMPLE RATE: 25 Hz  
FORMAT: SEG B 1600 BPI  
RECORDING FILTER: LOW CUT: 12 Hz, 18 DB/OCT  
HIGH CUT: 128 Hz, 72 DB/OCT

PROCESSING SEQUENCE  
1. DEMULTIPLY  
2. GAIN REMOVAL  
3. ANTIALIAS FILTER 90 HZ  
4. RESAMPLING 2 MS TO 4 MS  
5. AMPLITUDE CORRECTIONS FOR SPHERICAL DIVERGENCE  
6. S.O.D. CORRECTIONS 55 MS  
7. DEPHASING  
8. MULTIPLE ATTENUATION ( HULL )  
9. D.P.S. ( SEE BELOW )  
10. DYNAMIC CORR. DERIVED FROM VELOCITY ANALYSES GERA - EVERY 3 KM  
11. DIGITAL AGC: GATE LENGTH 2500 MS  
12. HORIZONTAL STACKING 48 - FOLD  
13. SHOT AND STREAHER CORR. 10 MS  
14. Z.V.F.  
15. DIGITAL AGC: GATE LENGTH 600 MS  
16. DISPLAY

DECONVOLUTION: D.B.S.  
OPERATOR LENGTH: 700 MS  
PREDICTION LENGTH: 12 MS, 700 MS / 24 MS  
NO. OF AUTOCORR. WINDOWS: 2  
GATES ON SHOT/STRA TRACK: 400-2400 MS / 1800-3500 MS  
GATES ON SHOT/STRA TRACK: 1800-2800 MS / 2300-3700 MS

FILTER:	TIME (SECS)	FREQ (HZ)	SLOPES (DB/OCT)
	0.0 - 0.5	10 60	15 25
	2.5	10 50	15 25
	4.0 - END	10 30	15 25

DISPLAY PARAMETERS  
S.P. MARKED ON SECTION AT C.D.P. POSITION  
( S.P. NUMBERING REVERSED AND REVERSED )  
DATUM PLANE IS SEA LEVEL  
POLARITY: NORMAL (S.E.G. STANDARD) COMPRESSIONAL WAVE  
RECORDED AS A NEGATIVE NUMBER ON TAPE AND PLOT AS TROUGH  
(WRITTEN ON PLAYBACK)

LEGEND	POLARITY	NEGATIVE VALUES	SCALE
	WHITE	BLACK	HORIZONTAL: 1:25,000 VERTICAL: 1:25,000
	BLACK	WHITE	KILOMETRE

FOR CLIENT USE:  
CHECKED BY: SIGNATURE:  
INTERPRETED BY: SIGNATURE: