

# Petrex

ADRIATIC SEA

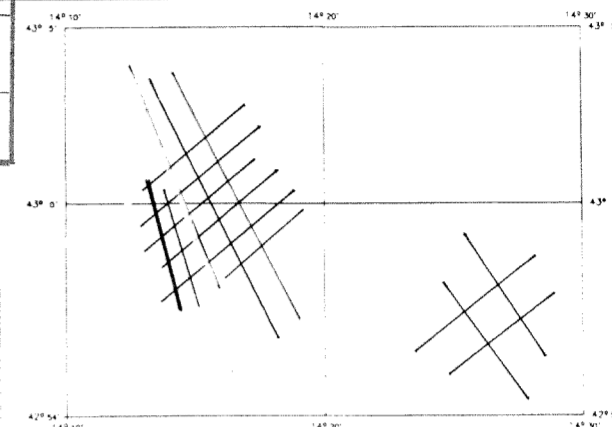
LINE: B84-180

SP 327 TO SP 487

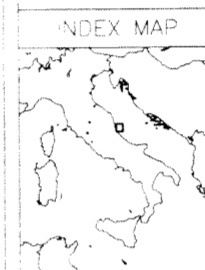
NORTH-WEST

DBAS TV-FILTERED

PERMITS B.R163.PX / R189.PX



INDEX MAP



RECORDED BY:  
HORIZON EXPLORATION LTD.  
BOAT:  
NORTHERN HORIZON  
DATE:  
APRIL 1984  
PROCESSED BY:  
S.E.S. GRUPPE  
SUPERVISOR: WEBER, J.  
DATE:  
15.09.1984



RECORDING DATA

SOURCE: TYPE BOLT PAR AIRGUNS CABLE: 2400 M PRAKLA-SEISMOS STREAMER  
GUN DEPTH: 5 M CENTRE ARRAY TO CENTRE BEAR TRACK 105 M  
NUMBER OF GUNS: 5 HYDROPHONES / SECTION 120  
VOLUME: 1620 CU IN TYPE WPI-0045 ( LMS-2510 )  
PRESSURE: 2000 P S.I. NO. OF GROUPS: 7 MS  
SHOT INTERVAL: 25 M GROUP LENGTH: 25 M  
S.O.D. TO SHOT: 55 MS CABLE DEPTH: 7-10 M AVERAGE  
DISTANCE ANTENNA - SOURCE CENTRE: 85 M

RECORDING SYSTEM: DFS V

RECORD LENGTH: 6.0 SEC  
RECORDING FOLD: 48 FOLD, 96 TRACES  
SAMPLE RATE: 7 MS  
FORMAT: SEG 8 1600 BPI  
RECORDING FILTER: LOW CUT: 12 HZ, 18 DB/OCT  
HIGH CUT: 128 HZ, 72 DB/OCT



PROCESSING SEQUENCE

1. DEMULTIPLY
2. GAIN REMOVAL
3. ANTIALIAS FILTER 90 HZ
4. RESAMPLING 2 MS TO 1 MS
5. AMPLITUDE CORRECTIONS FOR SPHERICAL DIVERGENCE
6. S.O.D. CORRECTIONS 55 MS
7. DEPHASING
8. MULTIPLE ATTENUATION (MULTI)
9. D.B.S.
10. DYNAMIC CORN DERIVED FROM VELOCITY ANALYSES GERA - EVERY 3 KM
11. DIGITAL AGC. GATE LENGTH 2500 MS
12. HORIZONTAL STACKING 48 - FOLD
13. SHOT AND STREAMER CORN 10 MS
14. T.V.F. (SEE BELOW)
15. DIGITAL AGC. GATE LENGTH 600 MS
16. DISPLAY

DECONVOLUTION D.B.S.  
OPERATOR LENGTH 200 MS  
PREDICTION LENGTH 12 MS / 24 MS  
NO OF AUTOCORR. WINDOWS  
GATES ON SHOTFAR TRACE 400-2400 MS / 1800-3500 MS  
GATES ON SHOTFAR TRACE 1800-2800 MS / 2300-3700 MS

FILTER:	TIME(SECS)	FREQ(HZ)	SLOPES (DB/OCT)	
			LC	HC
	0.0 - 0.5		15	40
	2.5		10	50
	4.0 - END		10	30

DISPLAY PARAMETERS

S.P. MARKED ON SECTION AT C.D.P. POSITION  
( S.P. NUMBERING REVERSED )  
DATUM PLANE IS SEA LEVEL  
POLARITY: NORMAL (S.E.G. STANDARD) COMPRESSORIAL WAVE  
RECORDED AS A NEGATIVE NUMBER ON TAPE AND PLOT AS TROUGH  
(WHITE) ON PLAYBACK.

LEGEND	POLARITY	SCALES
WHITE	NEGATIVE VALUES	HORIZONTAL 1:50 000
BLACK	POSITIVE VALUES	VERTICAL 1:50 000
BLACK	WHITE	1 CM/SEC 10 CM/SEC
VELOCITY INPUT		KILOMETRE

FOR CLIENT USE:  
CHECKED BY: SIGNATURE:  
INTERPRETED BY: SIGNATURE:

V4

(S)	(M/S)	(M/S)
T0	V4	V1
0.129	1.581	1.581
0.209	1.562	1.657
0.309	1.620	1.734
0.453	1.691	1.829
0.695	1.762	1.969
0.816	1.867	2.139
1.194	2.031	2.356
1.537	2.195	2.670
1.941	2.393	3.030
2.420	2.651	3.500
2.852	2.871	4.572
3.375	3.142	4.821
3.400	3.457	5.151
4.001	3.885	5.733
5.008	4.427	6.121
6.000	4.765	6.200

V5

(S)	(M/S)	(M/S)
T0	V5	V1
0.135	1.500	1.500
0.218	1.500	1.633
0.322	1.619	1.736
0.461	1.693	1.855
0.601	1.761	1.968
0.815	1.868	2.140
1.197	2.035	2.351
1.524	2.155	2.547
1.897	2.274	2.708
2.449	2.827	3.586
2.881	2.878	4.721
2.888	3.149	4.918
3.401	3.461	5.187
3.888	3.868	5.688
4.399	4.420	6.129
6.000	4.763	6.200

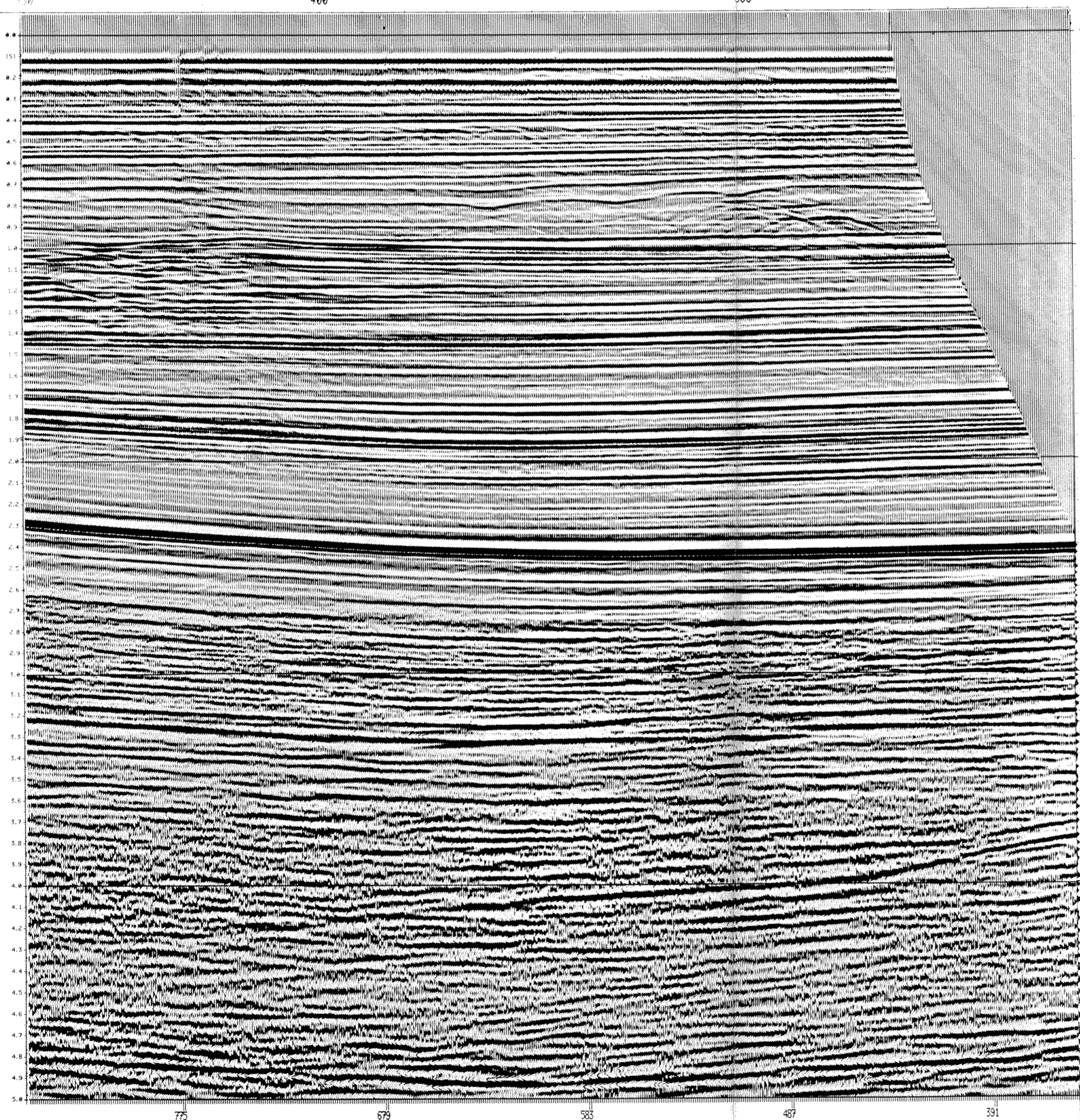
SEZIONE IDROCARBURI  
di ROMA  
19 MAR. 1985  
Prot. N. 7000

B84-182 | 353.4  
B84-183 | 281.0  
B84-184 | 266.3  
B84-185 | 251.2  
B84-186 | 252.0

FIELD NO.  
HOTPOINT

39  
355  
400

30  
255  
300



775 679 583 487 391