

Al266

17 MARCAT. BOLOGNA 18 LIRE 500

LINE BR-185-84-05  
S.P. 100 TO 556  
.4800% D.B.S. - T.V.F.

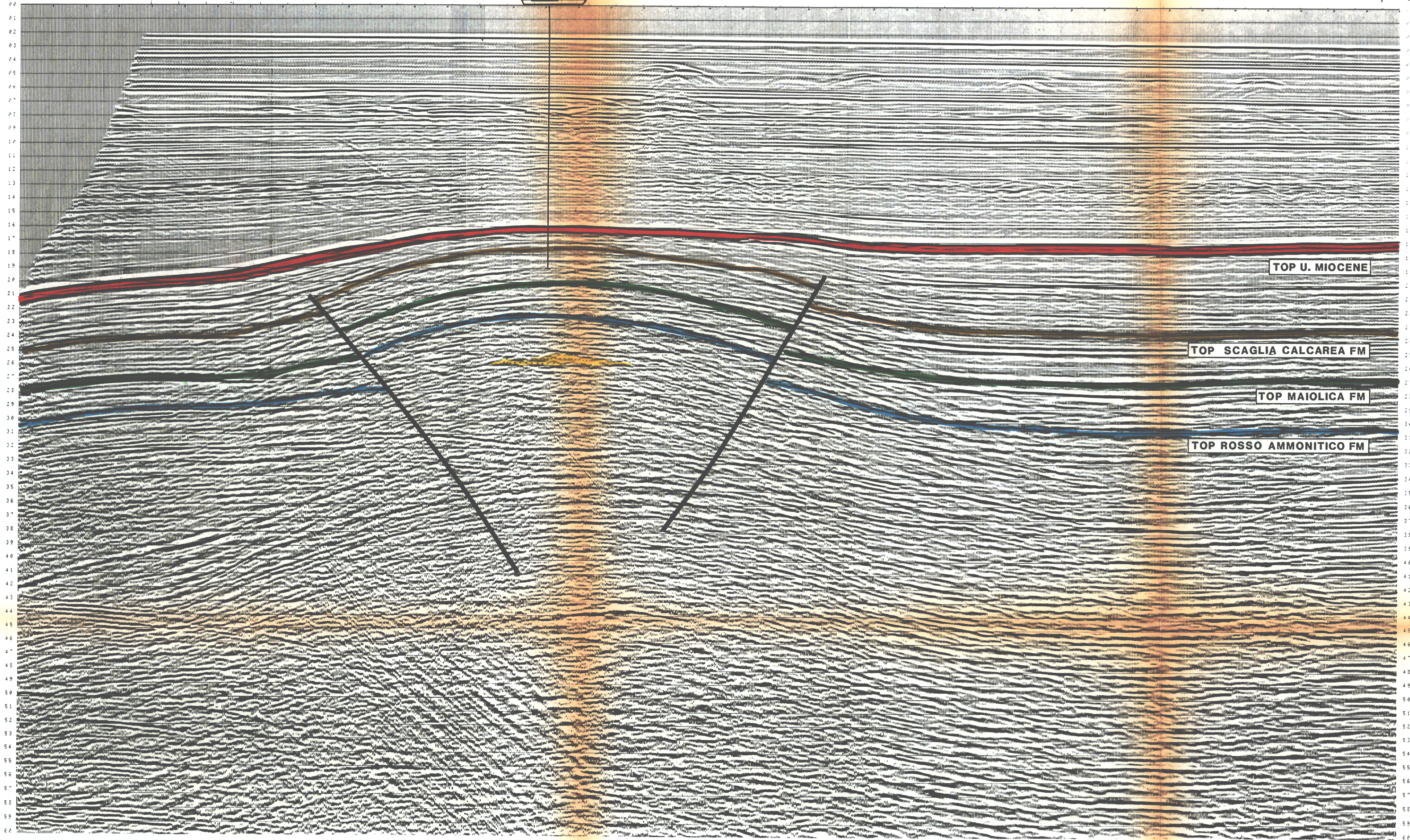
SEZIONE IDROCARBURI  
di ROMA  
17 FEB 1988  
Prot. N. 728  
in 288/56

NORTHEAST

ENIGMA #1

LINE BR-185-84-05  
S.P. 100 TO 556

100 150 200 250 300 350 400 450 500



**PETROMARINE S.P.A.**  
**WESTERN RICERCHE GEOFISICHE**  
 MILAN - ITALY

AREA ADRIATIC SEA  
 PERMIT BR.185.84

DATE OF RECORDING: JUL 1, 1984  
 DATE OF PROCESSING: OCTOBER 1984

RECORDING DATA	PROCESSING SEQUENCE
RECENT: [ ] SURVEY: [ ] AREA: [ ] DATE: [ ] TIME: [ ] INSTRUMENT: [ ] CHANNELS: [ ] SAMPLE RATE: [ ] GAIN: [ ] FILTERS: [ ] LEGEND: [ ] INTERSECTIONS: [ ] WATER DEPTH: [ ]	PROCESSING SAMPLE RATE: 4 MS MULTIPLE: [ ] QUALITY CONTROL: [ ] NEAR TRACE DISPLAY AND LOGS: [ ] DECONVOLUTION BEFORE STACK: [ ] GENERAL SPREADING APPLIED: [ ] OPERATOR LENGTH: [ ] PREDICTION DISTANCE: [ ] PREDICTION WEIGHT LIGHT: [ ] TRACE BALANCE ON OUTPUT: [ ] VELOCITY ANALYSIS: [ ] GATHER VELIN: [ ] 4800% N.M.O. STACK: [ ] MUTE APPLIED: [ ] STIMULI CONNECTION: [ ] R.M.S. GAIN: [ ] LINE VARIANT FILTER: [ ] FILTERS ARE INTERPOLATED BOTH SPATIALLY AND TEMPORALLY COMMENTS: [ ] FREQUENCY: [ ] 16/24 34/50 12/24 56/72 10/18 84/92 8/18 90/96

LINE LOCATION MAP