

Party 127.11.60

MONTEBISON

ADRIATIC SEA
AREA D.R. 47 GM

SW 1150 LINE DR 47.07 NE

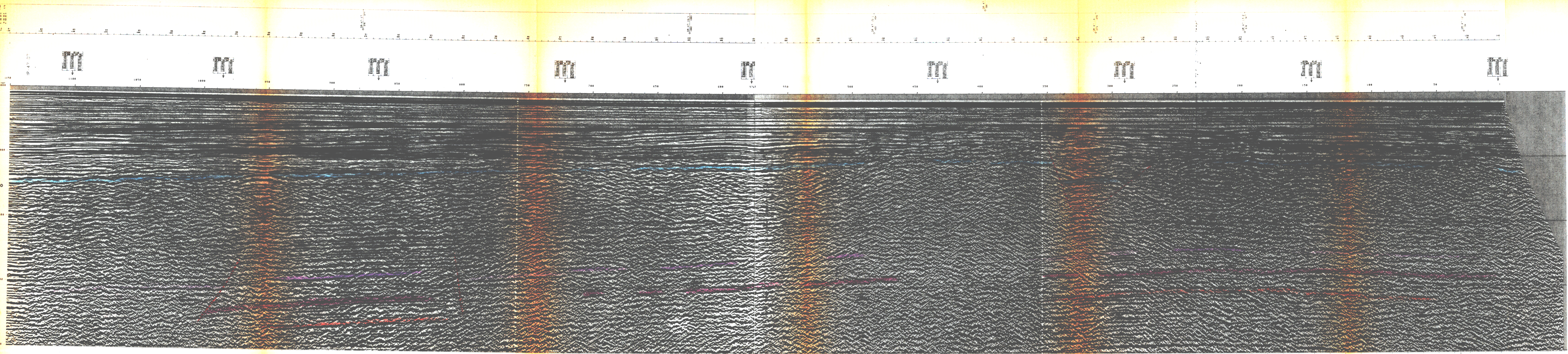
BOAT MOTION ←

PL N° 625 A STACK 4800 V.DBASJVF.AMCO D JANE 81

FIELD RECORDING 4800 V. Contractor C.G.G.	DIGITAL PROCESSING P.S. Sequence in 4 ms
SHIP	AMP. TIME RECORD
PROJ. AREA	MEQCO Stabilization of Vertical angle
INSTRUMENTS	RECONVOLUTION
SN 738	Operator length 200 m
WINDST 1800 BT	Window 0 2000 m
FILTER 4 015	Window 1 2000 2000 m
SAMPLING	RELIN TO ANALYSIS
SOURCE	NRD CORRECTIONS
VELOCITY	STACK 4800 V
DEPTH	DECONVOLUTION
LENGTH	Operator length 200 m
SP INTERVAL	Window 0 2000 m
STREAMER	Window 1 2000 2000 m
DEPTH	TIME VARIANT FILTER
GROUPS	SIGNAL CORRECTION ENHANCEMENT - AMCO-D
GROUP INTERVAL	TRACE EQUALIZATION
GEOPONES	ANALOG DISPLAY static correction -12 ms

COMPAGNIE GENERALE DE GEOPHYSIQUE

ALL. 1 (all'istanza di permesso
"d ME presentata in
data J)



Top del complesso
dolomitico ed evaporitico

Orizzonti sismici attribuiti
a livelli stratigrafici antecedenti
il complesso evaporitico triassico
(Burano s.l.)

