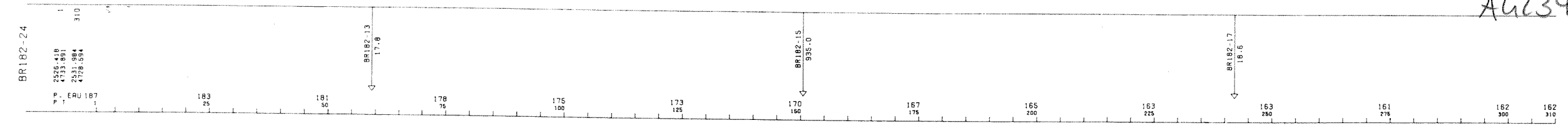


A6239



ELF ITALIANA
ADRIATIQUE B.R182.LF

1-83-B.R182-24

NW 1 310 SE
POINTS DE TIR

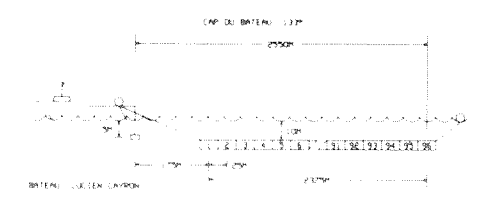
STACK C48 DBS
FKMUL BS

MISSION 127 11 65

PL 108 11-4-84

ENREGISTREMENT TERRAIN C48

| | | | |
|----------|---------------|-----------------------|---------------------|
| * BATEAU | LUCIEN CAYRON | * ENREGISTREMENT | LABO SH 338 |
| | | FORMAT | 9 PISTES - 1600 BP1 |
| | | FILTRE | 8 / 125 HZ |
| | | ECHANTILLONNAGE | 2 MS |
| | | LONGUEUR | 6 S |
| | | | |
| * SOURCE | STARJET | * STREAMER | 2400 M |
| | | PROFONDEUR | 10 M |
| | | NOMBRE DE TRACES | 96 |
| | | DISTANCE ENTRE TRACES | 25 M |
| | | GEOPHONES HC 202 | 24 PAR TRACE |



TRAITEMENT NUMERIQUE EN 4 MS

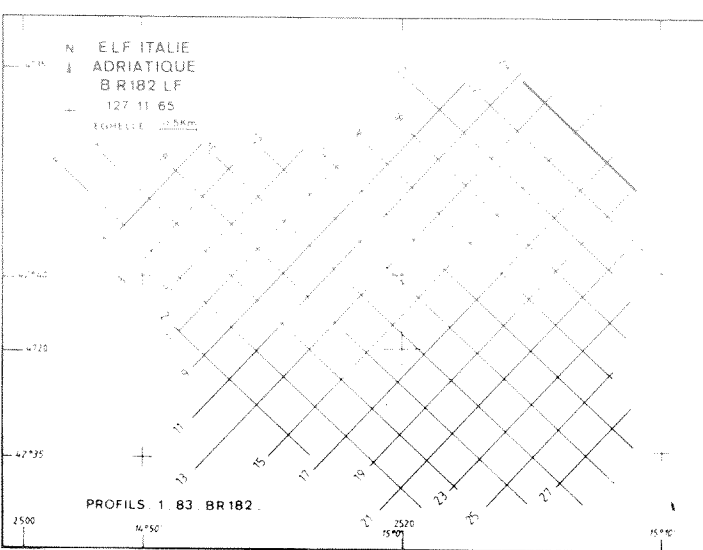
| | |
|----------------------------------|--|
| DEMULTEPLEXAGE | CORRECTION DYNAMIQUES |
| RE-ECHANTILLONNAGE DE 2 EN 4 MS | ADDITION COUVERTURE 48 |
| ATTENUATION DES MULTIPLES | FILTRE PASSE-BANDE 8 65 HZ |
| DANS LE PLAN FX | EGALISATION DES TRACES |
| RECUPERATION DES AMPLITUDES | CORRECTION SOURCE - STREAMER + 10 MS |
| DIVISION PAR LE SIGNAL STARJET | (SARPE) |
| | |
| MUTES | REJEU NUMERIQUE |
| DECONVOLUTION PREDICTIVE (SP174) | (B2033-F11501) - D.B.S. BRUT |
| OPERATEUR L 200 MS GAP 24 MS | NUMERO PT SUR SECTION POSITION IOP TRACE |
| FENETRES 0 - 1500 MS | |
| 2000 4500 MS | |

POLARITE

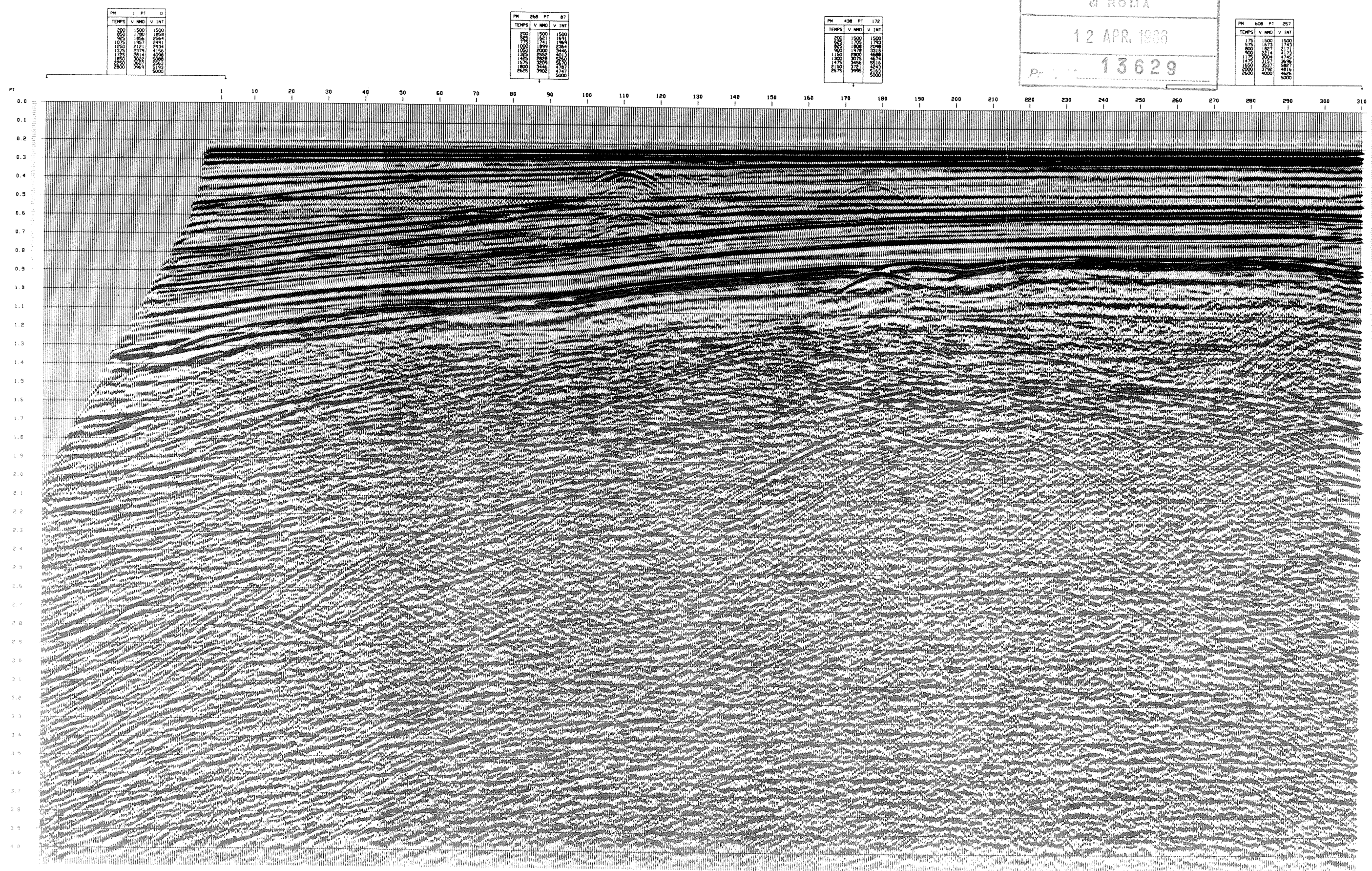
COMPRESSION = Valeur negative sur bande
APRES TRAITEMENT = NOIR SUR SECTION

ORIGINE DES TEMPS

NIVEAU DE LA MER



PROFILS 1 83 BR182



| PT | 1 | PT | 0 |
|--------|------|------|------|
| TEMPS | 17.8 | 17.8 | 17.8 |
| V. NMO | 17.8 | 17.8 | 17.8 |
| V. INT | 17.8 | 17.8 | 17.8 |

| PT | 258 | PT | 87 |
|--------|-------|-------|-------|
| TEMPS | 935.0 | 935.0 | 935.0 |
| V. NMO | 935.0 | 935.0 | 935.0 |
| V. INT | 935.0 | 935.0 | 935.0 |

| PT | 438 | PT | 172 |
|--------|------|------|------|
| TEMPS | 18.6 | 18.6 | 18.6 |
| V. NMO | 18.6 | 18.6 | 18.6 |
| V. INT | 18.6 | 18.6 | 18.6 |

| PT | 608 | PT | 257 |
|--------|------|------|------|
| TEMPS | 18.6 | 18.6 | 18.6 |
| V. NMO | 18.6 | 18.6 | 18.6 |
| V. INT | 18.6 | 18.6 | 18.6 |

SEZIONE IDROCARBURI
di ROMA
12 APR. 1986
Pr. 13629