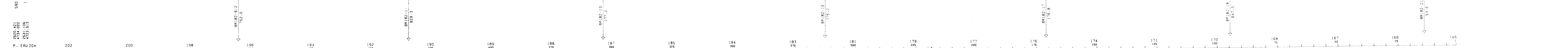


BR182-20



PT	PROFOND. (M)	TEMP. (°C)
1	0.5	12.5
2	1.0	12.5
3	1.5	12.5
4	2.0	12.5
5	2.5	12.5
6	3.0	12.5
7	3.5	12.5
8	4.0	12.5

PT	PROFOND. (M)	TEMP. (°C)
1	0.5	12.5
2	1.0	12.5
3	1.5	12.5
4	2.0	12.5
5	2.5	12.5
6	3.0	12.5
7	3.5	12.5
8	4.0	12.5

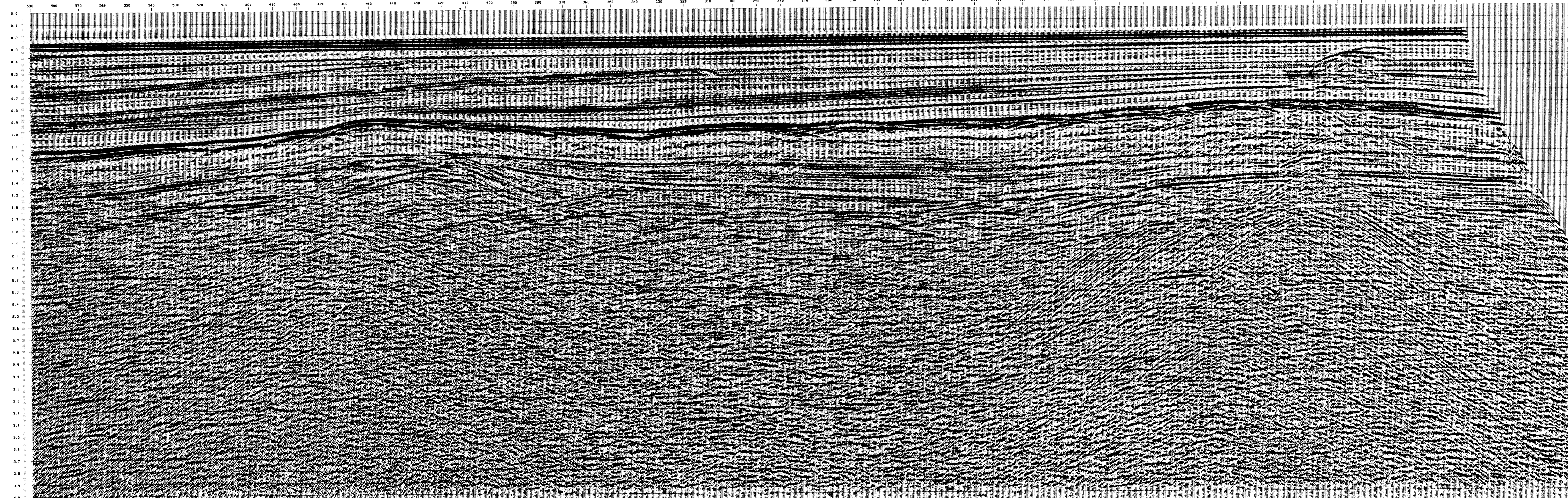
PT	PROFOND. (M)	TEMP. (°C)
1	0.5	12.5
2	1.0	12.5
3	1.5	12.5
4	2.0	12.5
5	2.5	12.5
6	3.0	12.5
7	3.5	12.5
8	4.0	12.5

PT	PROFOND. (M)	TEMP. (°C)
1	0.5	12.5
2	1.0	12.5
3	1.5	12.5
4	2.0	12.5
5	2.5	12.5
6	3.0	12.5
7	3.5	12.5
8	4.0	12.5

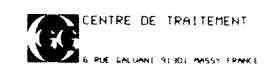
PT	PROFOND. (M)	TEMP. (°C)
1	0.5	12.5
2	1.0	12.5
3	1.5	12.5
4	2.0	12.5
5	2.5	12.5
6	3.0	12.5
7	3.5	12.5
8	4.0	12.5

PT	PROFOND. (M)	TEMP. (°C)
1	0.5	12.5
2	1.0	12.5
3	1.5	12.5
4	2.0	12.5
5	2.5	12.5
6	3.0	12.5
7	3.5	12.5
8	4.0	12.5

PT	PROFOND. (M)	TEMP. (°C)
1	0.5	12.5
2	1.0	12.5
3	1.5	12.5
4	2.0	12.5
5	2.5	12.5
6	3.0	12.5
7	3.5	12.5
8	4.0	12.5



AG235



ELF ITALIANA

ADRIATIQUE B.R182.LF

1-83-B.R182-20

NW 590 1 SE

STACK C48 DBS

FKML B5

MISSION 127 11 65

PL 105 10_4_84

ENREGISTREMENT TERRAIN C48

• BATEAU LUCIEN CAYRON • ENREGISTREMENT LABO SN 338

SYSTEME DE NAVIGATION SYLEDIS FORMAT 9 PISTES - 1600 BPI

ENREGISTRE LE 30-11-83 FILTRE 8 - 125 HZ

• SOURCE STARJET • STREAPER 2400 M

BATTERIES 3 PROFONDEUR 10 M

UNDES 1000-BI-TRI-HEXA TROPES 96

PROFONDEUR 5 M DISTANCE ENTRE TRACES 25 M

PAS DE TIR 25 M GEOPHONES MC 202 24 PAR TRACE

TRAITEMENT NUMERIQUE EN 4 MS

DEMULTIPLIEXAGE RE-ECHANTILLONNAGE DE 2 EN 4 MS

ATTENUATION DES MULTIPLES DANS LE PLAIN FR

RECUPERATION DES AMPLITUDES DIVISION PAR LE SIGNAL STARJET

PLATES DECONVOLUTION PREDICTIVE OPERATEUR L 200 MS GAP 24 MS FENETRES 0 - 1500 MS 2000 - 4000 MS

CORRECTION DYNAMIQUES ADDITION COUVERTURE 4B

FILTRE PASSE-BANDE 0.65 HZ EGALISATION DES TRACES CORRECTION SOURCE - STREAPER + 10 MS

REJEU NUMERIQUE (200% F1-1501) 0.8 S. BRUT

NUMERO PT SUR SECTION POSITION CDP TRACE I

POLARITE

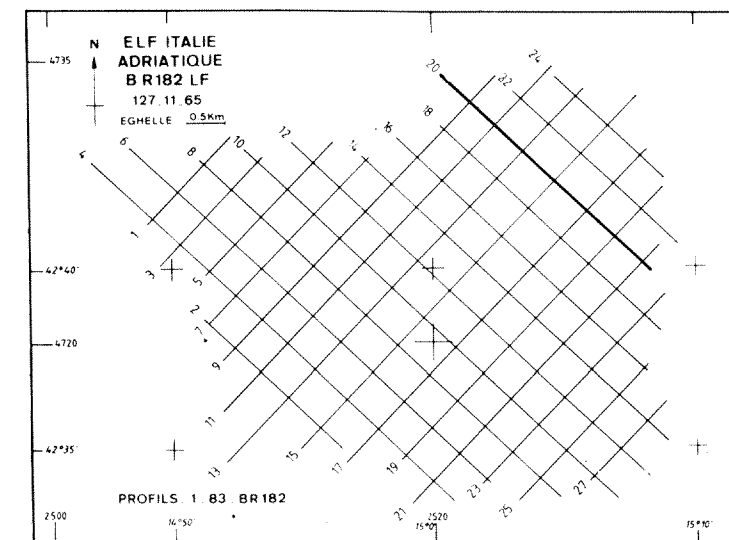
COMPRESSION = VALEUR NEGATIVE SUR BANDE APRES TRAITEMENT = NOIR SUR SECTION

ORIGINE DES TEMPS

NIVEAU DE LA MER

ETHELLE

1:1000



SEZIONE IDROCARBURI di ROMA

12 APR. 1986

Prof. N. 13629