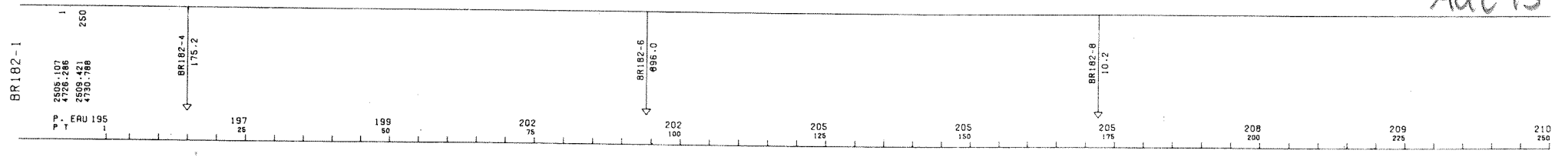


AGZ-15

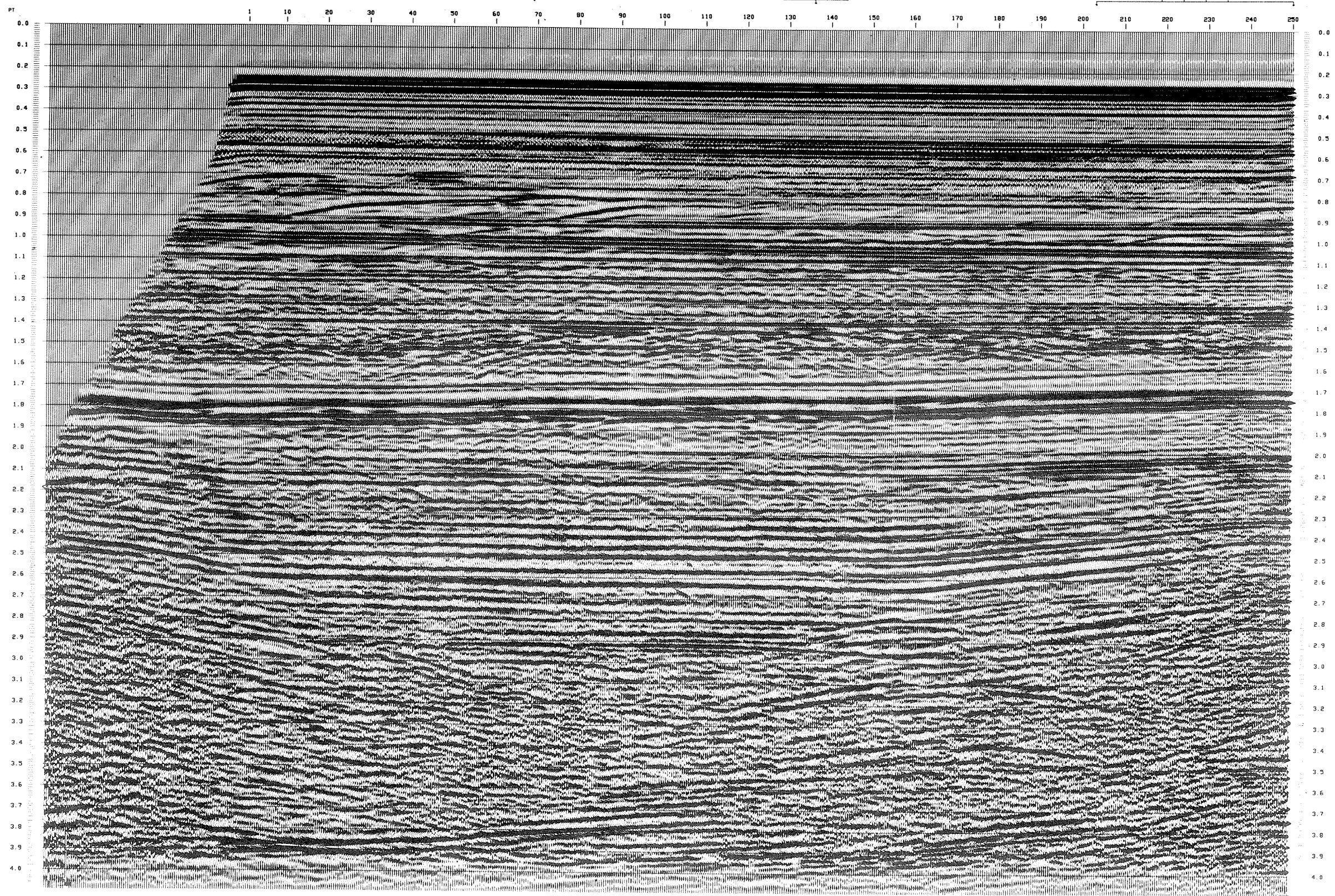


| PM   | I   | PT  | Q     |
|------|-----|-----|-------|
| TEMP | V   | NMO | V INT |
| 195  | 100 | 100 | 100   |
| 196  | 100 | 100 | 100   |
| 197  | 100 | 100 | 100   |
| 198  | 100 | 100 | 100   |
| 199  | 100 | 100 | 100   |
| 200  | 100 | 100 | 100   |
| 201  | 100 | 100 | 100   |
| 202  | 100 | 100 | 100   |
| 203  | 100 | 100 | 100   |
| 204  | 100 | 100 | 100   |
| 205  | 100 | 100 | 100   |
| 206  | 100 | 100 | 100   |
| 207  | 100 | 100 | 100   |
| 208  | 100 | 100 | 100   |
| 209  | 100 | 100 | 100   |
| 210  | 100 | 100 | 100   |

| PM   | 232 | PT  | 69    |
|------|-----|-----|-------|
| TEMP | V   | NMO | V INT |
| 195  | 100 | 100 | 100   |
| 196  | 100 | 100 | 100   |
| 197  | 100 | 100 | 100   |
| 198  | 100 | 100 | 100   |
| 199  | 100 | 100 | 100   |
| 200  | 100 | 100 | 100   |
| 201  | 100 | 100 | 100   |
| 202  | 100 | 100 | 100   |
| 203  | 100 | 100 | 100   |
| 204  | 100 | 100 | 100   |
| 205  | 100 | 100 | 100   |
| 206  | 100 | 100 | 100   |
| 207  | 100 | 100 | 100   |
| 208  | 100 | 100 | 100   |
| 209  | 100 | 100 | 100   |
| 210  | 100 | 100 | 100   |

| PM   | 266 | PT  | 136   |
|------|-----|-----|-------|
| TEMP | V   | NMO | V INT |
| 195  | 100 | 100 | 100   |
| 196  | 100 | 100 | 100   |
| 197  | 100 | 100 | 100   |
| 198  | 100 | 100 | 100   |
| 199  | 100 | 100 | 100   |
| 200  | 100 | 100 | 100   |
| 201  | 100 | 100 | 100   |
| 202  | 100 | 100 | 100   |
| 203  | 100 | 100 | 100   |
| 204  | 100 | 100 | 100   |
| 205  | 100 | 100 | 100   |
| 206  | 100 | 100 | 100   |
| 207  | 100 | 100 | 100   |
| 208  | 100 | 100 | 100   |
| 209  | 100 | 100 | 100   |
| 210  | 100 | 100 | 100   |

| PM   | 500 | PT  | 203   |
|------|-----|-----|-------|
| TEMP | V   | NMO | V INT |
| 195  | 100 | 100 | 100   |
| 196  | 100 | 100 | 100   |
| 197  | 100 | 100 | 100   |
| 198  | 100 | 100 | 100   |
| 199  | 100 | 100 | 100   |
| 200  | 100 | 100 | 100   |
| 201  | 100 | 100 | 100   |
| 202  | 100 | 100 | 100   |
| 203  | 100 | 100 | 100   |
| 204  | 100 | 100 | 100   |
| 205  | 100 | 100 | 100   |
| 206  | 100 | 100 | 100   |
| 207  | 100 | 100 | 100   |
| 208  | 100 | 100 | 100   |
| 209  | 100 | 100 | 100   |
| 210  | 100 | 100 | 100   |



**ELF ITALIANA**  
ADRIATIQUE B.R182.LF  
1-83-B.R182-01

SW 1 250 NE  
POINTS DE TIR

**STACK C48 DBS**  
FKMUL BS  
MISSION 127 11 65

PL 101 11-4-84

**ENREGISTREMENT TERRAIN C48**

|                       |               |                  |                     |
|-----------------------|---------------|------------------|---------------------|
| • BATEAU              | LUCIEN CAYRON | • ENREGISTREMENT | LABO SN 338         |
| SYSTEME DE NAVIGATION | SYLEDIS       | FORMAT           | 9 PISTES - 1600 BP1 |
| ENREGISTRE LE         | 29/11/83      | FILTRE           | B / 125 HZ          |
|                       |               | ECHANTILLONNAGE  | 2 MS                |
|                       |               | LONGUEUR         | 6.5                 |

|            |                         |                       |              |
|------------|-------------------------|-----------------------|--------------|
| • SOURCE   | STARJET                 | • STREAMER            | 2400 M       |
| BATTERIES  | 3                       | PROFONDEUR            | 10 M         |
| UNNES      | MONO-BI-TRI-HEXA TROPES | NOMBRE DE TRACES      | 96           |
| PROFONDEUR | 5 M                     | DISTANCE ENTRE TRACES | 25 M         |
| PAS DE TIR | 25 M                    | GEOPHONES HC 202      | 24 PAR TRACE |

BATEAU: LUCIEN CAYRON

**TRAITEMENT NUMERIQUE EN 4 MS**

|  |   |
|--|---|
| DEMUTIPLEXAGE                          | CORRECTION DYNAMIQUES                       |
| RE-ECHANTILLONNAGE DE 2 EN 4 MS        | ADDITION COUVERTURE 48                      |
| ATTENUATION DES MULTIPLES              | FILTRE PASSE-BANDE 8-65 HZ                  |
| DANS LE PLAN FK (FKMUL)                | EGALISATION DES TRACES                      |
| RECUPERATION DES AMPLITUDES            | CORRECTION SOURCE / STREAMER + 10 MS        |
| DIVISION PAR LE SIGNAL STARJET (UAPCO) |   |
| MUTES                                  |   |
| DECONVOLUTION PREDICTIVE (TRITA)       | REJEU NUMERIQUE (B2010.F1.TS01) D.B.S. BRUT |
| OPERATEUR L 200 MS GAP 24 MS           |   |
| FENETRES 0 - 1500 MS                   | NUMERO PT SUR SECTION POSITION CDP TRACE    |
| 2000 - 4000 MS                         |   |

**POLARITE**  
COMPRESSION = VALEUR NEGATIVE SUR BANDE  
APRES TRAITEMENT = NOIR SUR SECTION

**ORIGINE DES TEMPS**  
NIVEAU DE LA MER

SEZIONE IDROCARBURI  
di ROMA

12 APR 1984

Prof. N. 13629

