

LINE BR-181-84-03

TIME (S)	RMS VEL	DISP (M)
0.10	1450	1450
0.20	1490	1510
0.47	1560	1576
0.53	1560	1590
0.81	1750	1956
1.46	2000	2922
2.05	2660	4151
3.21	3340	6300
5.00	3700	4125

TIME (S)	RMS VEL	DISP (M)
0.10	1450	1450
0.31	1490	1509
0.67	1560	1669
0.84	1640	1866
0.81	1690	1823
1.46	2000	2922
1.91	2300	3861
3.21	3000	6296
5.00	3700	4709

TIME (S)	RMS VEL	DISP (M)
0.10	1450	1450
0.29	1500	1509
0.59	1640	1818
0.79	1700	1909
1.07	1860	2218
1.24	1910	2178
2.18	2810	3674
2.52	3090	4626
3.21	3500	5465
5.00	3800	4296

TIME (S)	RMS VEL	DISP (M)
0.10	1450	1450
0.30	1510	1519
0.50	1560	1669
1.04	1800	2004
1.27	1900	2081
1.73	2500	4500
2.46	3000	3624
5.00	3710	4741

TIME (S)	RMS VEL	DISP (M)
0.10	1490	1490
0.41	1620	1645
0.75	1660	1643
0.72	1650	2008
0.82	1700	2104
1.10	1880	2328
1.36	2040	2364
2.03	2800	3684
3.10	3410	4605
5.00	3750	4335

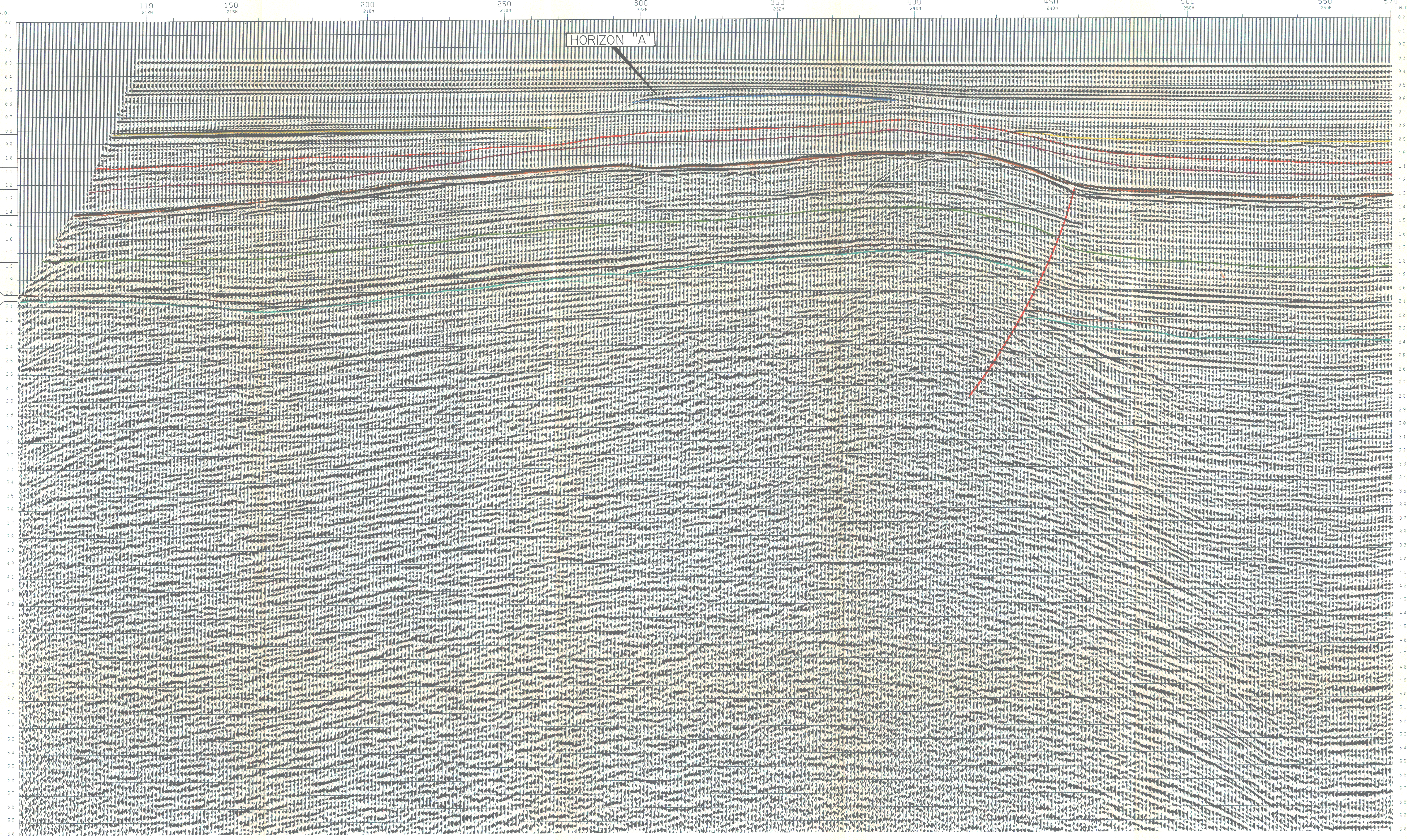
AUTHOR : R. DE MATTIA
 DATE : SEPTEMBER 1985
 SKETCH # : 0416
 ATTACHED TO: GEOLOGICAL - GEOPHYSICAL INTERPRETATION T.C.M. #1
 ENCLOSURE # : 6

SESIONI: 11
 29 NOV. 1985
 Proj.: 11272

LINE BR-181-84-03
 S.P. 119 TO 574
 .4800% D.B.S. - T.V.F.

NORTHEAST

HORIZON "B"
 (WITHIN QUATERNARY)
 UPPER PLIOCENE
 MIDDLE PLIOCENE
 UPPER MIOCENE
 SCAGLIA CALCAREA Fm.
 MARNE A FUCOIDI Fm.
 MAIOLICA Fm.



PETROMARINE S.P.A.
 WESTERN RICERCHES GEOPHISICHE
 MILAN - ITALY

AREA ADRIATIC SEA PERMIT BR.181.84 DATE OF RECORDING: JUL. 1984 DATE OF PROCESSING: OCTOBER 1984

RECORDING DATA	PROCESSING SEQUENCE
BOAT SHOT BY: WESTERN GEOPHYSICAL PRIMARY NAVIGATION SYSTEM: USMA NAVIGATION LOCATION: COP POSITION	PROCESSING SAMPLE RATE: 4 MS QUALITY CONTROL NEAR TRACE DISPLAY AND LOGS DECONVOLUTION BEFORE STACK GEOMETRIC SPREADING APPLIED OCEAN FLOOR: MIN PHASE INVERSE FILTER WINDOW LENGTH: 1 X 2000 MS OPERATOR LENGTH: MIN PHASE INVERSE FILTER MIN PREDICTION DISTANCE: 200 MS PERCENT WHITE NOISE: 1 PPM TRACE BALANCE ON OUTPUT
SOURCE GUNION SHOT DEPTH: 6 M FORTS PER IN: 50 SP INTERVAL: 25 M	VELOCITY ANALYSIS GATHER VELOCITY 4800% N.M.D. STACK MUTE APPLIED DYNAMIC CORRECTION S.M.S. GAIN
INSTRUMENTS NAME MODEL: 1.1/ DVS-V REC. FILTERS: HZ 150N REC. FILTERS: HZ HIGH: 12002-70 0.0000 RECORD LENGTH: 6 SECS FORMER: SEC BY 1000.001 SAMPLE RATE: 2 MS	TIME VARIANT FILTER FILTERS ARE INTERPOLATED BOTH SPATIALLY AND TEMPORALLY.
CABLE STREAMER GROUPS: 2400 M GROUP INTERVAL: 25 M	COMMENTS DATUM PLANE IS SEA LEVEL A GUN AND CABLE DEPTH CORRECTION OF 13 MS HAS BEEN APPLIED COMPRESSION PULSES SHOWN AS NEGATIVE NUMBERS ON TIME AND PLOT AS THROUGH WHITE!

LEGEND
 INTERSECTIONS
 WATER DEPTH
 D.C. FOR N.G.C. *[Signature]* X 84

LINE LOCATION MAP