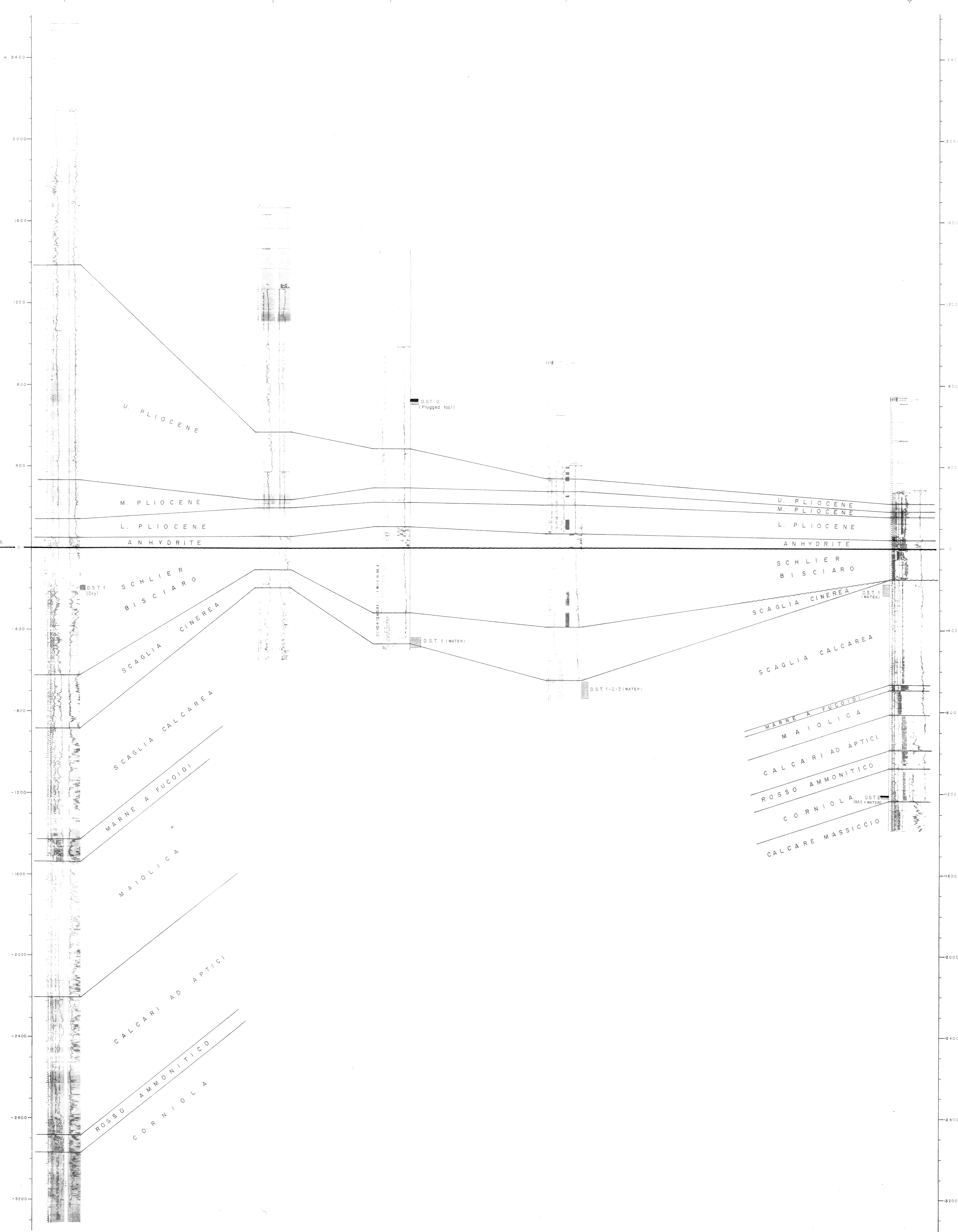


MURASSI
LIAS
CORNICOLA
CRETACEO
MIOCENE
P. PLIOCENE
M. PLIOCENE
L. PLIOCENE
ANHYDRITE
SCHLIER BISCIAURO
SCAGLIA CINEREA
SCAGLIA CALCAREA
MARNE A FUCOIDI
MAIOLICA
CALCARI AD APTICI
ROSSO AMMONITICO
CORNICOLA

SPINELLO M. 1 ENIGMA 1 STEFANIA 1 PATRIZIA 1 EDGAR 2



2400
2000
1600
1200
800
400
0
-400
-800
-1200
-1600
-2000
-2400
-2800
-3200