

LINE B84-246

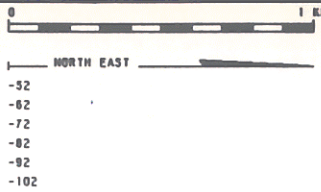
6000% S.P. 100 S.P. 295

FK MIGRATION T.V.F.

Allegato 2	Data GIUGNO 1987	Dis.n. 2241/22
------------	------------------	----------------



AREA ADRIATICO ZONA B  
PROSPECT B.R170.ME



RECORDING	DATA	PLAYBACK	DATA
CONTRACTOR	GECO	DATUM PLANE	SEA LEVEL
PARTY NO	127-W7-35	VERTICAL SCALE	1 SEC. = 5 CM.
MAGNETIC RECORDER	DFS V	HORIZONTAL SCALE	1 : 25000
SAMPLE RATE	4 MS.	PREPROCESSING REEL	502005
RECORD LENGTH	6 SEC.	STACK REEL	501103
FILTER L.C.	5.3 HZ	PREVIOUS PROCESSING	CGG, 1985
ALIASING FILTER	90 HZ	DATE	JUNE, 1986
DATE	APRIL, 1985		
SPREAD CONFIGURATION	125-5112.5 M.		
TRACE / S.P.	240		
GROUP / INTERVAL	12.5 M.		
GEOPHONES / GROUP			
GEOPHONES / HZ			
ENERGY SOURCE	AIRGUN		
AVG. CABLE/DEPTH	10 M.		
AVG. CHARGE SHOT	2213 CU. INS.		
AVG. SHOT/DEPTH	6 M.		

PROCESSING

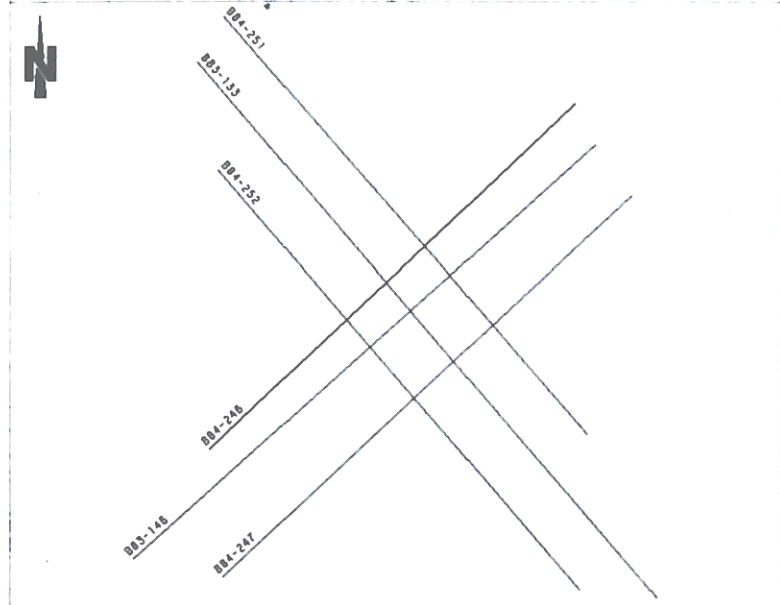
INPUT TAPE FORMAT SEG-D  
DEMULTIPLIED 9 TRACKS 6250 BPI  
ADJACENT TRACE SUM  
(WITH DIFFERENTIAL NMO)  
PREPROCESSOR  
AMPLITUDE CORR. FOR SPHERICAL DIVER.  
DEPHASING WAVELET PROCESSING  
D.B.S.: PREDICTIVE TYPE  
PREDICTION INTERVAL: 4 MS.  
OPERATOR LENGTH: 200 MS.  
2 WINDOWS 1/2 WL.

VELOCITY ANALYSIS ▽  
STACK 6000%  
D.A.S. (40-268 MS./60-160 MS.)  
MINIMUM TO ZERO PHASE CONVERSION  
DIP REMOVAL (MULTICHANNEL FILTER)  
MIGRATION FK FULL PHASE  
D.A.S.: FREQUENCY DOMAIN  
T.V. FILTER  
T.V. EQUALIZATION (200-400 MS.)

**T.V.F. PARAMETERS**

2000	10HZ	24DB	70HZ	48DB
3000	10HZ	24DB	55HZ	48DB
4000	10HZ	24DB	40HZ	48DB

**POLARITY CONVENTION**  
COMPRESSIONAL WAVES - WHITE ON SECTION



PROCESSED BY M. PRESTORI - E. STOLF

