

S.P. 100 TO 560  
LINE BR-163-5

LINE BR-163-5

S.P. 100 TO 560

4800PCT, DBS, TVF.

NORTHEAST

SEZIONE IDROCARBURI  
di ...  
- 5 OTT. 1983  
Prot. 98887

100  
20M

150  
20M

200  
20M

250  
20M

300  
20M

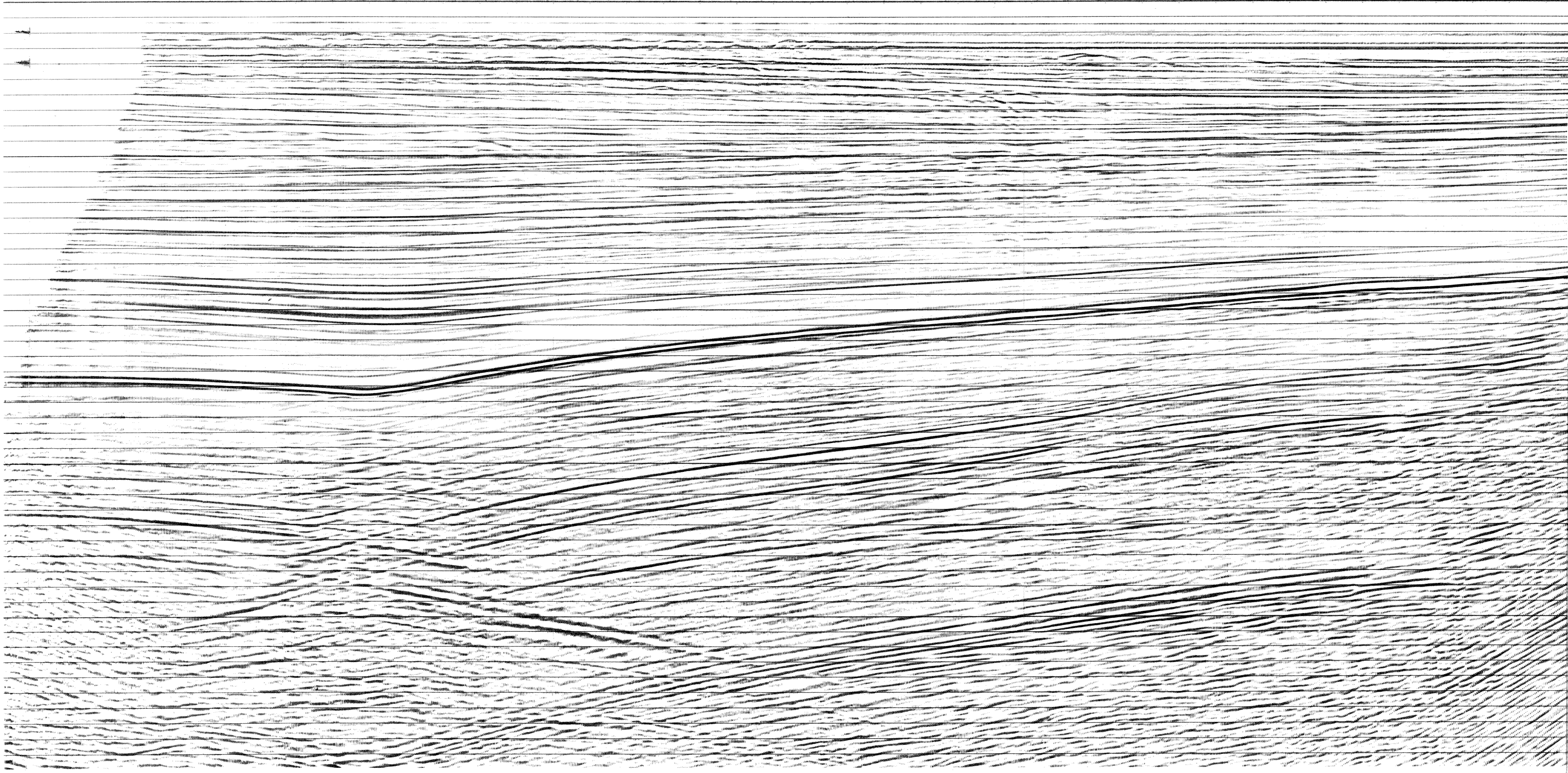
350  
20M

400  
20M

450  
20M

500  
20M

550  
20M



PETREX S.P.A.	
WESTERN RICERCHE GEOFISICHE	
AREA ITALIA ADRIATIC BR-163-1A	CONTRACT NO. 100 DATE OF RECORDING: 5 OCT 1983 DATE OF PROCESSING: 10 OCT 1983
<b>RECORDING DATA</b>	<b>PROCESSING SEQUENCE</b>
<p><b>SEABED</b></p> <p>MARKER MARK: ... PLOT MARK: ... SECTION: ... MARK SECTION: ...</p> <p><b>STRATIGRAPHY</b></p> <p>UNIT: ... THICKNESS: ... CORRELATION: ...</p> <p><b>INSTRUMENTS</b></p> <p>RECORDING SYSTEM: ... RECORDING LENGTH: ... RECORDING RATE: ...</p> <p><b>CABLE</b></p> <p>DEPTH: ... CABLE TYPE: ... CABLE LENGTH: ...</p>	<p>PROCESSING SAMPLE RATE: ...</p> <p><b>SEABED</b></p> <p>MINIMUM PHASE INVERSE FILTER (SEABED APPLIED) MINIMUM PHASE INVERSE FILTER (SEABED APPLIED) MINIMUM PHASE INVERSE FILTER (SEABED APPLIED)</p> <p><b>MULTIPLE ATTENUATION FILTER</b></p> <p>APPLIED IN 10 - 20 MIN</p> <p><b>VELOCITY ANALYSIS</b></p> <p>COMPOSITE VELOCITY</p> <p><b>MULTI CHANNEL FILTER</b></p> <p>APPLIED IN 10 - 20 MIN</p> <p><b>TIME VARIANT FILTER</b></p> <p>APPLIED IN 10 - 20 MIN</p> <p><b>LEGEND</b></p> <p>INTERSECTIONS: ... WATER DEPTH: ...</p>
<b>COMMENTS</b>	
<p>DATE PLANE IS SEA LEVEL H-GUN AND CABLE DEPTH CORRECTION BY 12 AS HAS BEEN APPLIED COMPRESSION VALUES GIVEN AS NEGATIVE NUMBERS ON TIME AND PLOT AS POSITIVE VALUES</p>	