

S. COSTANZO 1

R.T.E. 54 m.

MAROTTA 4

R.T.E. 45 m.

MAROTTA 2

R.T.E. 65 m.

FANO 1

R.T.E. 11 m.

MAROTTA 1

R.T.E. 45 m.

NW

SE

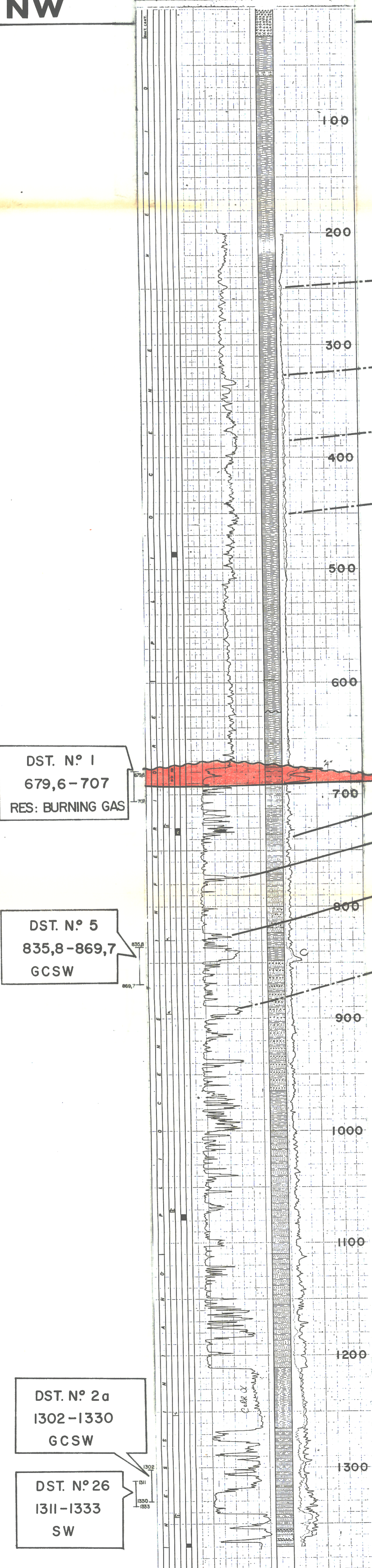
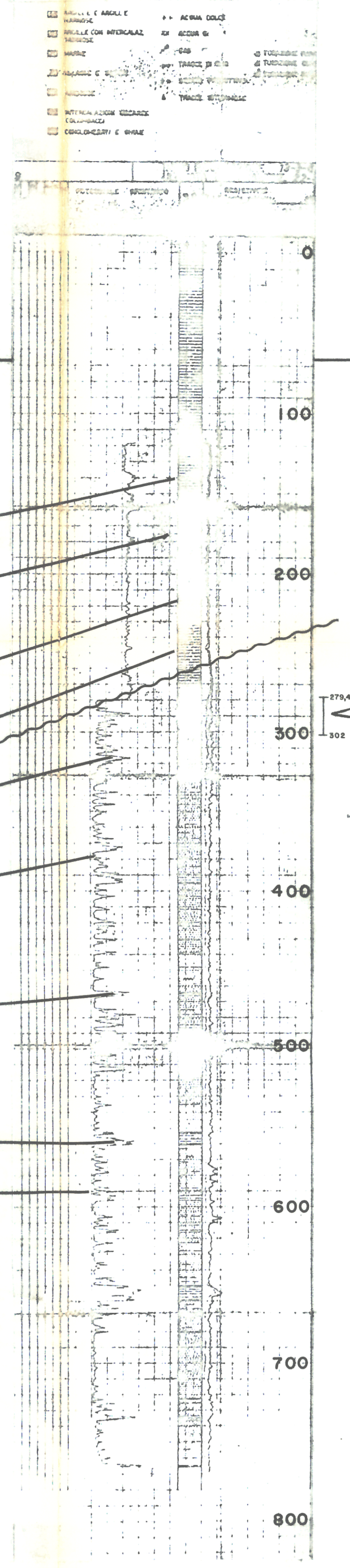
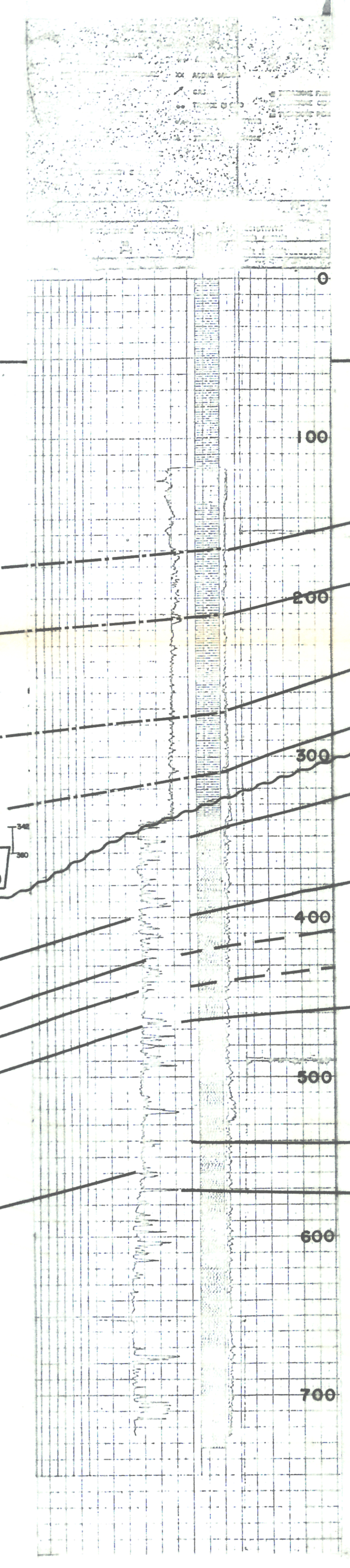
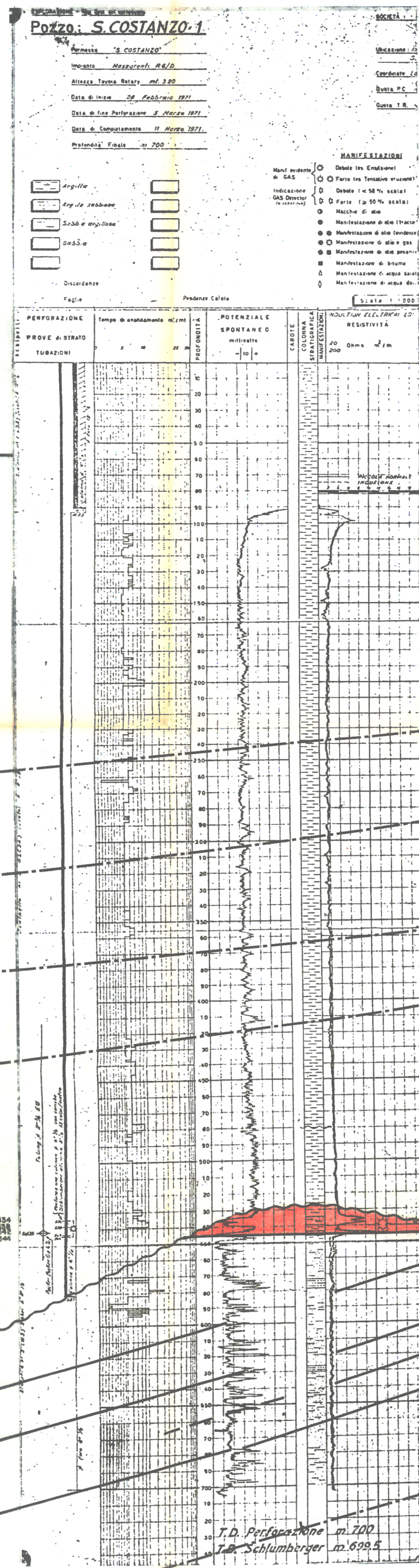
DATUM: SEA LEVEL

ARCHIVI@ LEGENDA

ARRETRATI E ANELLI	ACQUA DOLORE
ARRETRATI INTERCALARI	ACQUA SALATA
ARRETRATI	TORNANTE PIENO
ARRETRATI E ANNI	TORNANTE LUNGO
ARRETRATI	TORNANTE PIENO
INTERVALLO CALIBRATO	
CONTRASTI E BIANCHI	
TRASPARENTE	

INIZIO PERFORAZIONE 27/7/1982
 ULTIMA PERFORAZIONE 12/2/1982

POTENZIALE	SPONTANEO	RESISTIVITA'
TEMPERATURA	GRADIENTE	GRADIENTE



CHT IN 4 1/2" CSG
 534-538 "
 542-544 "
 RES: BURNING GAS

DST. N° 1
 342-360
 Rec. 900 lt.
 +SW 26000ppm
 +DRILLING MUD

DST. N° 1
 279,4-302
 Rec. 700 litres
 WATER AND DRILLING MUD

DST. N° 1
 679,6-707
 RES: BURNING GAS

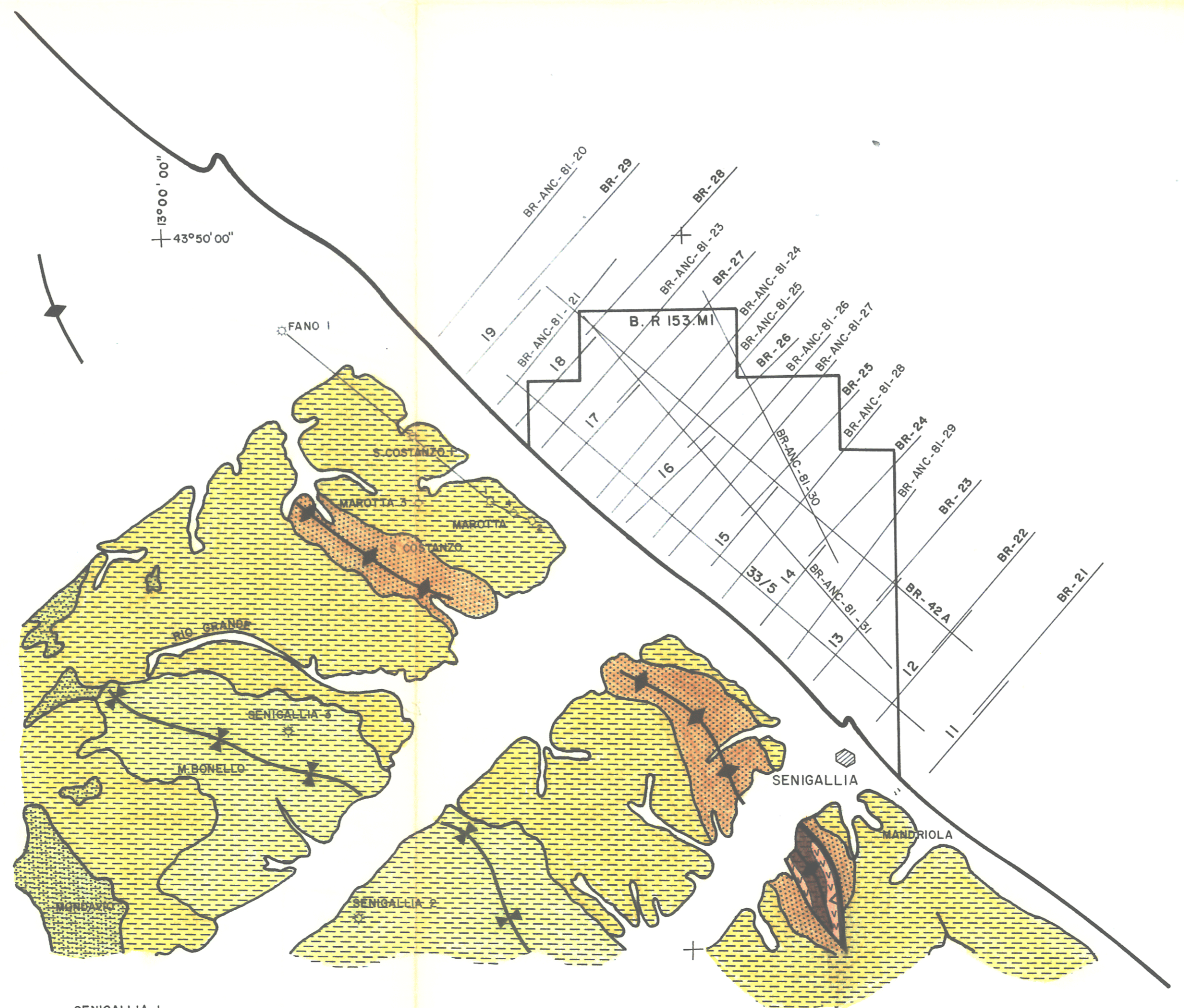
DST. N° 5
 835,8-869,7
 GCSW

DST. N° 2a
 1302-1330
 GCSW

DST. N° 26
 1311-1333
 SW

DST. N° 4
 1262,5-1278,6
 MISRUN

DST. N° 3
 1277,1-1292,2
 GCSW



VERTICAL SCALE 1:2000
 HORIZONTAL SCALE 1:12500

TOTAL MINERARIA		Fig. 6
PERMIT	B. R. 153. MI	Author: BEGOLLI
		Draftsman: F. Bernodo
		Contour Interval:
		Datum plane:
		Date: 07/4/1982
		Report No.:
		File No.:
		Coordinates:
		Projection: Gauss Kruger
		Scale: Meridi: 10 East Greenwich; E-200 m
		Datum: Mean Merid: 1965
SCALE: 1		Km

A4044