

A 4042

CLIENT COMPAGNIA PETROLIFERA ITALIANA

AREA RIMINI - ANCONA

All . 3

LINE BR - 26

Author GG DAVI  
Rome march 1982

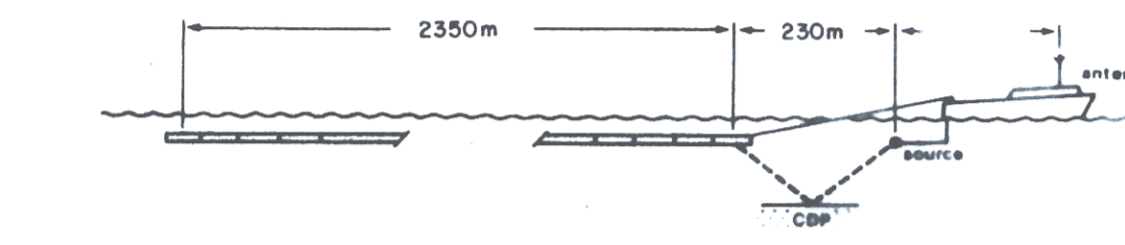
SP 1-397

NE

### RECORDING PARAMETERS

#### RECORDED BY GEOPHYSICAL OFFSHORE EXPLORATION

Party	M/V Geol Egide	Date	March 1978
Instruments	LRS-888 Cob-1	Gain Type	
Filters	6 - 124 Hz	Source Delay	
Energy Source	Airgun Array	Source Depth	7.6 m
Shotpoint Interval	25m	Shots per Shotpoint	1
Offset to Near Trace	230m	Group Interval	50m
Cable Length	2400m	Cable Depth	12 m
Recorded	48 Fold Off-end	Number of Groups	48
Record Length	5 secs	Sample Rate	2ms
Field Polarity	Compression Wave Recorded as Negative Number on Tape		



### PROCESSING PARAMETERS

#### PROCESSED BY SEFEL

PROCESSED 48 FOLD STACK  
 DEMULTIPLY AND BINARY GAIN RECOVERY  
 SYNTHETIC GAIN CURVE APPLICATION  
 COMMON DEPTH POINT GATHER  
 BANDPASS DIGITAL FILTER 5 - 60 Hz, 320ms Operator Length  
 DECONVOLUTION BEFORE STACK  
 Design Slope: Type WL Least Squares Filter Length 240ms, 20ms Gap  
 Gits 0.2 to 2.3 sec  
 Slope of 1300 gals Across 48 Traces

DYNAMIC CORRECTIONS: Velocities from Constant Velocity Stacks

FIRST BREAK MUTING

Offset (m)	Time (sec)
320	0.0
370	0.4
920	1.1
1470	1.5
2875	2.2

COMMON DEPTH POINT STACK 48 Fold  
 DATUM CORRECTION Bulk Static Applied

#### PROCESSED BY DIGICON

DIGICON'S WAVE EQUATION MIGRATION  
 TIME VARIANT BANDPASS DIGITAL FILTERING

Time (sec)	Frequency (Hz)
0.0	15-60
1.5	15-60
3.0	8-35
5.0	8-35

TIME VARIANT EQUALIZATION

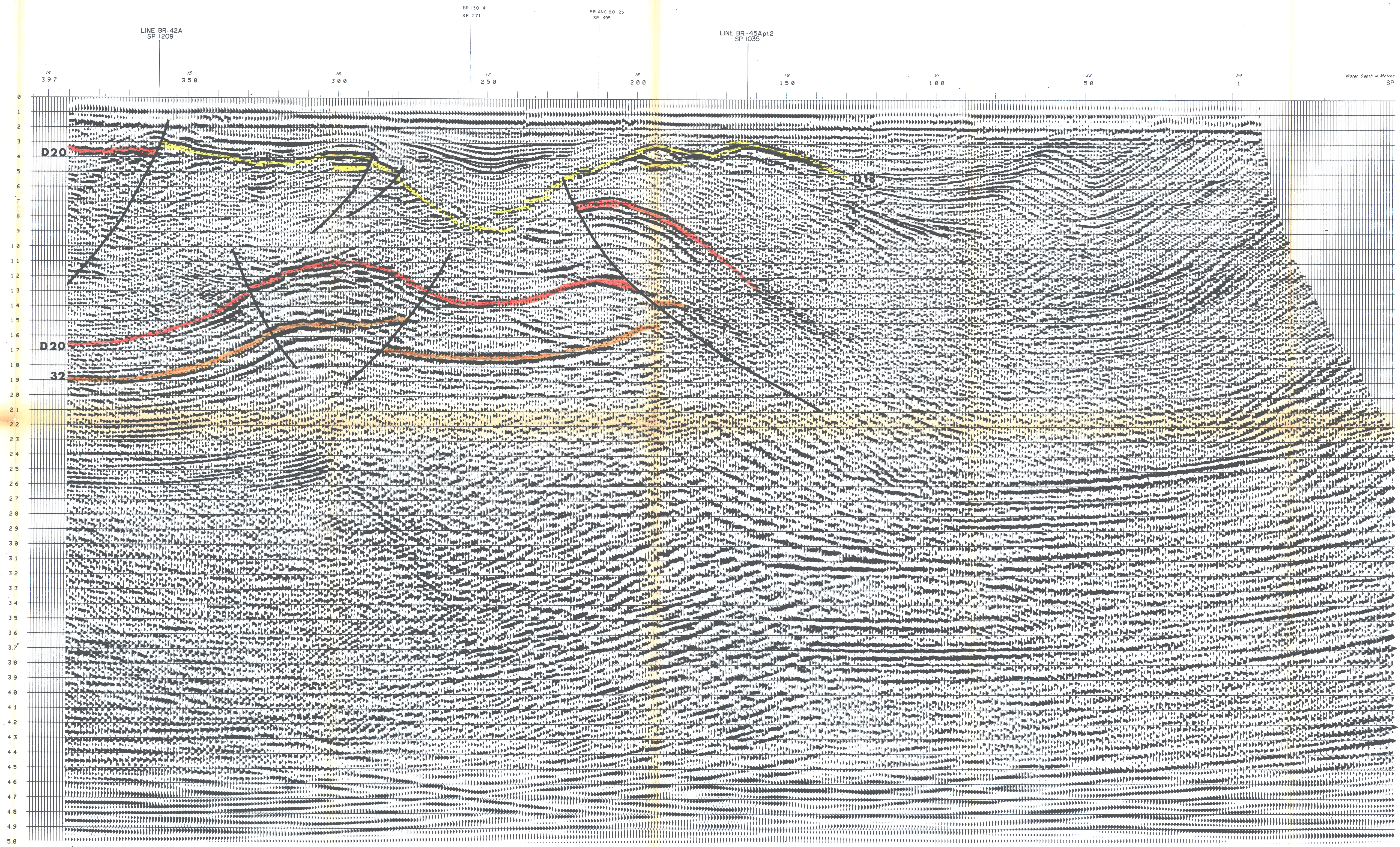
### DISPLAY PARAMETERS

POLARITY CONVENTION: Negative Number on Tape Displayed as Trough  
 Horizontal Scale 112.500  
 Vertical Scale 10cm/sec  
 Date October 1978  
 Shotpoint Location Marked on Section

QUALITY CONTROL: Geophysicist  
 PA 4040 Party Chief



PROCESSED BY digital exploration limited east grinstead england



SP. 1

T	Vms	Vint
0	1450	1449
100	1450	2303
500	2160	3052
900	2600	3718
1200	2920	4867
1500	3400	6931
1800	4200	7006
2350	5000	6260
3300	5400	7019
5000	6000	

SP. 113

T	Vms	Vint
0	1450	1449
100	1450	2303
500	2160	2750
900	2440	3964
1100	2780	4980
1350	3300	6929
1650	4200	6144
2000	4600	6067
2650	5000	6257
3700	5400	7447
5000	6000	

SP. 228

T	Vms	Vint
0	1450	1449
100	1450	2303
500	2160	2716
750	2360	3202
900	2520	3773
1150	2640	6234
1450	3800	5686
2000	4400	5678
2800	4600	6865
5000	5800	

SP. 338

T	Vms	Vint
0	1450	1449
100	1450	2303
500	2160	2660
900	2560	3275
1100	2700	3497
1600	2920	5776
2100	4800	6722
2500	4400	6472
3150	4900	7073
5000	5800	