

CLIENT COMPAGNIA PETROLIFERA ITALIANA

AREA RIMINI - ANCONA

LINE BR - 30

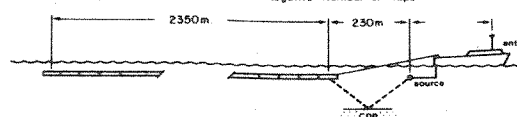
SP 1-552



RECORDING PARAMETERS

RECORDED BY GEOPHYSICAL OFFSHORE EXPLORATION

Party	M/V Geol Egea	Date	March 1978
Instruments	LES 888 Cobo-1	Gain Type	
Filters	6 - 24 Hz	Source Delay	
Energy Source	Airgun Array	Source Depth	7.6 m
Shotpoint Interval	25m	Shots per Shotpoint	1
Offset to Near Trace	230m	Group Interval	50m
Cable Length	2400m	Cable Depth	12m
Recorded	48 Fold Off end	Number of Groups	48
Record Length	5 sec	Sample Rate	250
Field Polarity	Compression Wave Recorded as Negative Number on Tape		



PROCESSING PARAMETERS

PROCESSED BY SEPEL

PROCESSED	48 FOLD STACK	PROCESSING SAMPLE RATE	4 ms
DEMULTIPLEX AND BINARY GAIN RECOVERY			
SYNTHETIC SAGBI SURVEY APPLICATION			
COMMON DEPTH POINT GATHER			
BANDPASS DIGITAL FILTER	5 - 60 Hz, 320ms Operator Length		
DECONVOLUTION BEFORE STACK	Type: WL Least Squares Filter Length: 240ms, 20ms Gate		
Design Gates	Gate: 0.2 to 2.3 sec		
DYNAMIC CORRECTIONS	Velocities from Constant Velocity Slacks		
FIRST BREAK MUTING			

Offset (m)	Time (sec)
320	0.0
370	0.4
920	1.1
1470	1.5
2575	2.2

COMMON DEPTH POINT STACK 48 Fold

DATUM CORRECTION Built Steric Applied

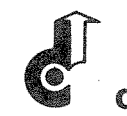
PROCESSED BY DIGICON

DIGICON'S WAVE EQUATION MIGRATION	
TIME VARIANT BANDPASS DIGITAL FILTERING	
Time (sec)	Frequency (Hz)
0.0	15.60
1.5	15.60
3.0	8.35
5.0	8.35

TIME VARIANT EQUALIZATION

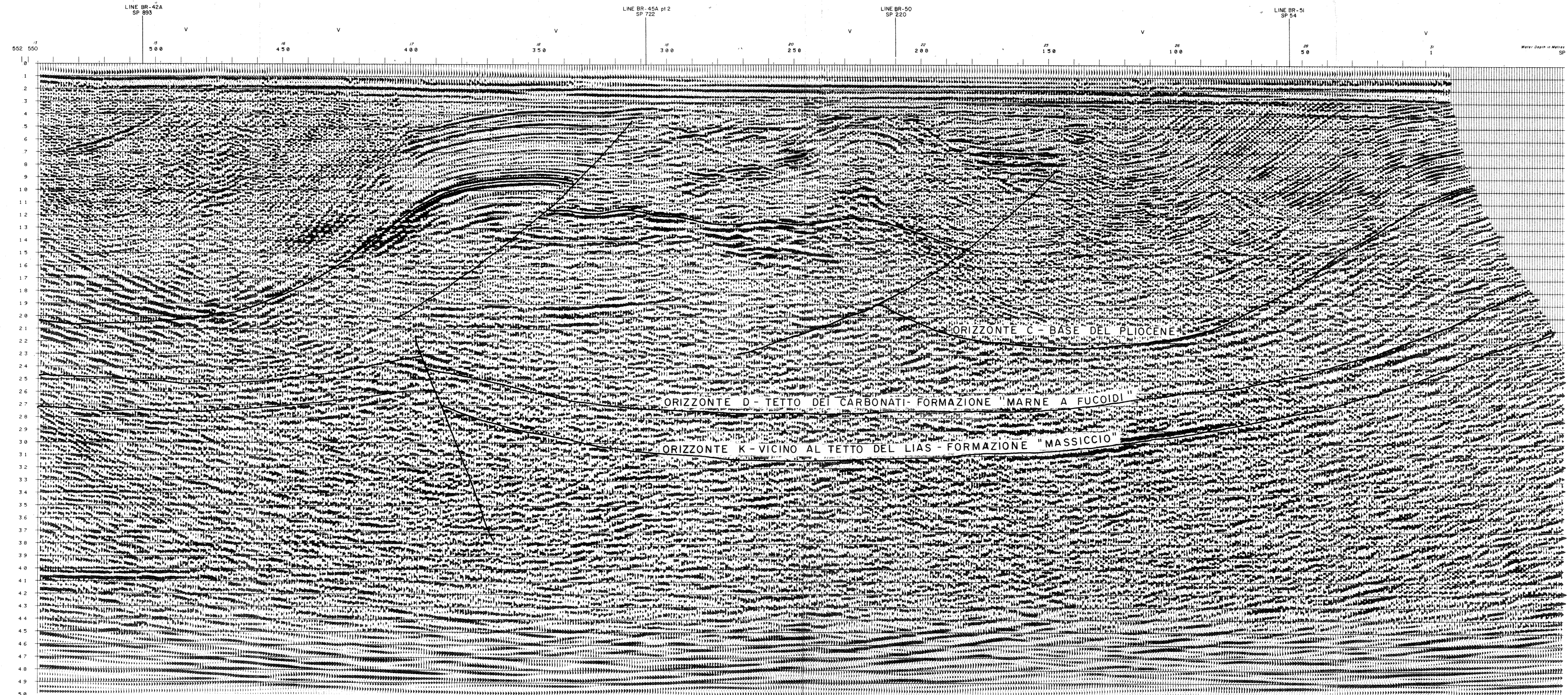
DISPLAY PARAMETERS

POLARITY CONVENTION	Negative Number on Tape Displayed as Trough
Horizontal Scale	1:25,000
Vertical Scale	5cm/sec
Date	October 1978
Shotpoint Location	Marked on Section
QUALITY CONTROL	Geophysicist
PA 4040	Party Chief



digicon digital exploration limited east grinstead england

PROCESSED BY



ORIZZONTE C - BASE DEL PLIOCENE

ORIZZONTE D - TETTO DEI CARBONATI - FORMAZIONE "MARNE A FUCIDI"

ORIZZONTE K - VICINO AL TETTO DEL LIAS - FORMAZIONE "MASSICCIO"

SP. 1

T	Vms	Vist
0	1450	1449
100	1450	2303
500	2120	3172
750	2520	3880
1000	2920	5266
1300	3600	5787
1600	4700	5944
2300	4700	6733
3100	5300	6993
5000	6000	

SP. 428

T	Vms	Vist
0	1450	1449
100	1450	2303
500	2160	3158
750	2680	3295
1250	2840	4903
1600	3400	7110
2000	4400	8311
3200	5200	8662
5000	6200	

SP. 113

T	Vms	Vist
0	1450	1449
100	1450	2280
500	2160	2747
750	2360	3464
1100	2760	5705
1400	3600	7099
1600	4200	7199
1900	4800	5826
3000	5200	7452
5000	6000	7332

SP. 488

T	Vms	Vist
0	1450	1449
100	1450	2280
500	2140	2747
750	2360	3464
1100	2760	5705
1400	3600	7099
1600	4200	7199
1900	4800	5826
3000	5200	7452
5000	6200	

SP. 228

T	Vms	Vist
0	1450	1449
100	1450	2256
500	2120	2515
700	2240	2737
1000	2400	3166
1500	2680	5583
2000	3600	6220
3100	4700	7244
5000	5800	

SP. 343

T	Vms	Vist
0	1450	1449
100	1450	2260
500	2200	2710
900	2440	3029
1200	2600	3117
1400	2680	5230
1550	3200	6200
1750	4000	10537
1950	4800	9200
3000	5400	6365
5000	6200	7236