

CLIENT COMPAGNIA PETROLIFERA ITALIANA
 AREA RIMINI - ANCONA
 LINE BR-9
 SP 1-778

RECORDING PARAMETERS

RECORDED BY GEOPHYSICAL OFFSHORE EXPLORATION
 Date: March 1978
 Instruments: LIS-888 GGG-1
 Source Delay: 5-104 Hz
 Source Depth: 7.6 m
 Shot Size per Shotpoint: 1 m
 Group Interval: 200m
 Cable Length: 2400m
 Number of Channels: 48
 Record Length: 5 sec.
 Note: Compressor Wave Recorded as Negative Number on Trace

PROCESSING PARAMETERS

PROCESSED BY SEFEL
 PROCESSED 48 FOLD STACK
 SIMULTANEOUS AND BINARY GAIN RECOVERY
 SYNTHETIC GAIN CURVE APPLICATION
 COMMON DEPTH POINT GATHER
 BANDPASS DIGITAL FILTER: 5-60 Hz, 500ms Operator Length
 HORIZONTALIZATION BEFORE STACK
 Design Class: Type III, Level Surface
 File Length: 2400m x 20ms
 Slope of 1000ms Across 48 Traces
 DYNAMIC CORRECTIONS: Velocities from Constant Velocity Slabs
 FIRST BREAK CUTTING
 COMMON DEPTH POINT STACK
 STATION CORRECTION: Bulk Slabs Applied

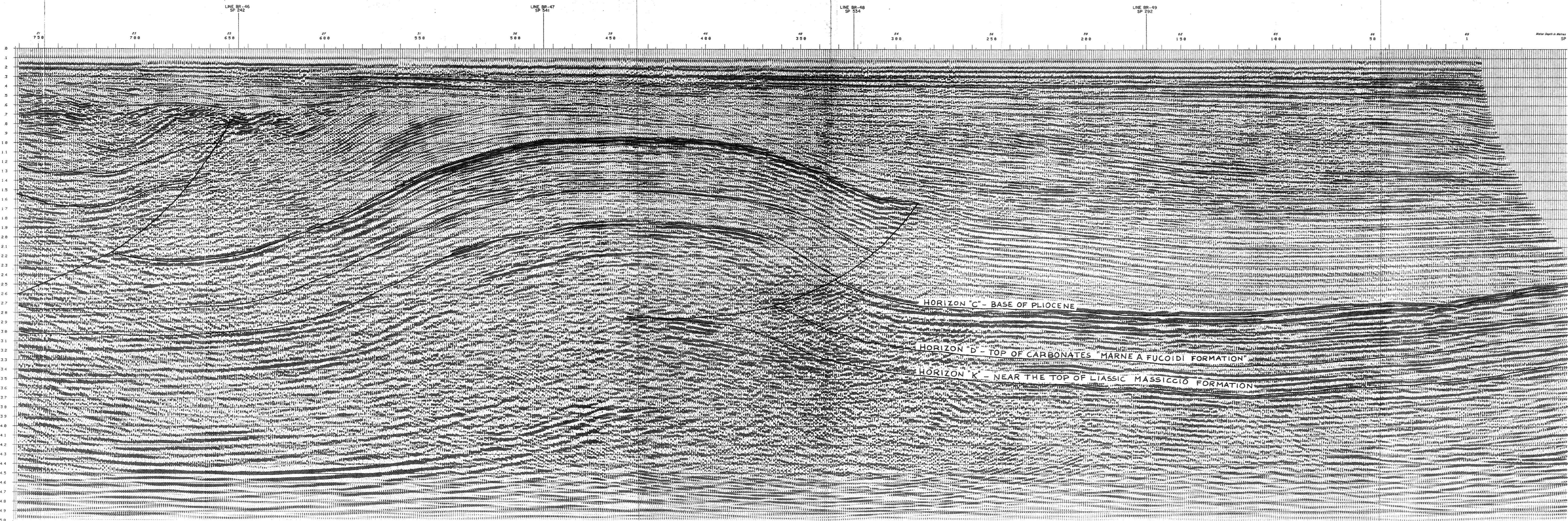
PROCESSED BY DIGICON

DIGICON'S WAVE EQUATION MIGRATION
 TIME VARIANT BANDPASS DIGITAL FILTERING
 Time (sec) Frequency (Hz)
 0.0 15.00
 1.5 15.00
 3.0 8.50
 5.0 6.50
 TIME VARIANT EQUALIZATION

DISPLAY PARAMETERS

POLARITY CONVENTION: Negative Number on Trace Displayed as Trough
 Horizontal Scale: 1:25,000
 Vertical Scale: 50m/sec
 Date: October 1978
 Geophysicist: R. G. G. G.
 Party Chief: R. G. G. G.

PROCESSED BY digicon
 digital exploration limited
 east grinstead england



SP. 1

T	Yms	Year
0	1440	1438
100	1440	1438
120	1440	1438
140	1440	1438
160	1440	1438
180	1440	1438
200	1440	1438
220	1440	1438
240	1440	1438
260	1440	1438
280	1440	1438
300	1440	1438
320	1440	1438
340	1440	1438
360	1440	1438
380	1440	1438
400	1440	1438
420	1440	1438
440	1440	1438
460	1440	1438
480	1440	1438
500	1440	1438

SP. 110

T	Yms	Year
0	1440	1438
100	1440	1438
120	1440	1438
140	1440	1438
160	1440	1438
180	1440	1438
200	1440	1438
220	1440	1438
240	1440	1438
260	1440	1438
280	1440	1438
300	1440	1438
320	1440	1438
340	1440	1438
360	1440	1438
380	1440	1438
400	1440	1438
420	1440	1438
440	1440	1438
460	1440	1438
480	1440	1438
500	1440	1438

SP. 225

T	Yms	Year
0	1440	1438
100	1440	1438
120	1440	1438
140	1440	1438
160	1440	1438
180	1440	1438
200	1440	1438
220	1440	1438
240	1440	1438
260	1440	1438
280	1440	1438
300	1440	1438
320	1440	1438
340	1440	1438
360	1440	1438
380	1440	1438
400	1440	1438
420	1440	1438
440	1440	1438
460	1440	1438
480	1440	1438
500	1440	1438

SP. 340

T	Yms	Year
0	1440	1438
100	1440	1438
120	1440	1438
140	1440	1438
160	1440	1438
180	1440	1438
200	1440	1438
220	1440	1438
240	1440	1438
260	1440	1438
280	1440	1438
300	1440	1438
320	1440	1438
340	1440	1438
360	1440	1438
380	1440	1438
400	1440	1438
420	1440	1438
440	1440	1438
460	1440	1438
480	1440	1438
500	1440	1438