

WATER DEPTH



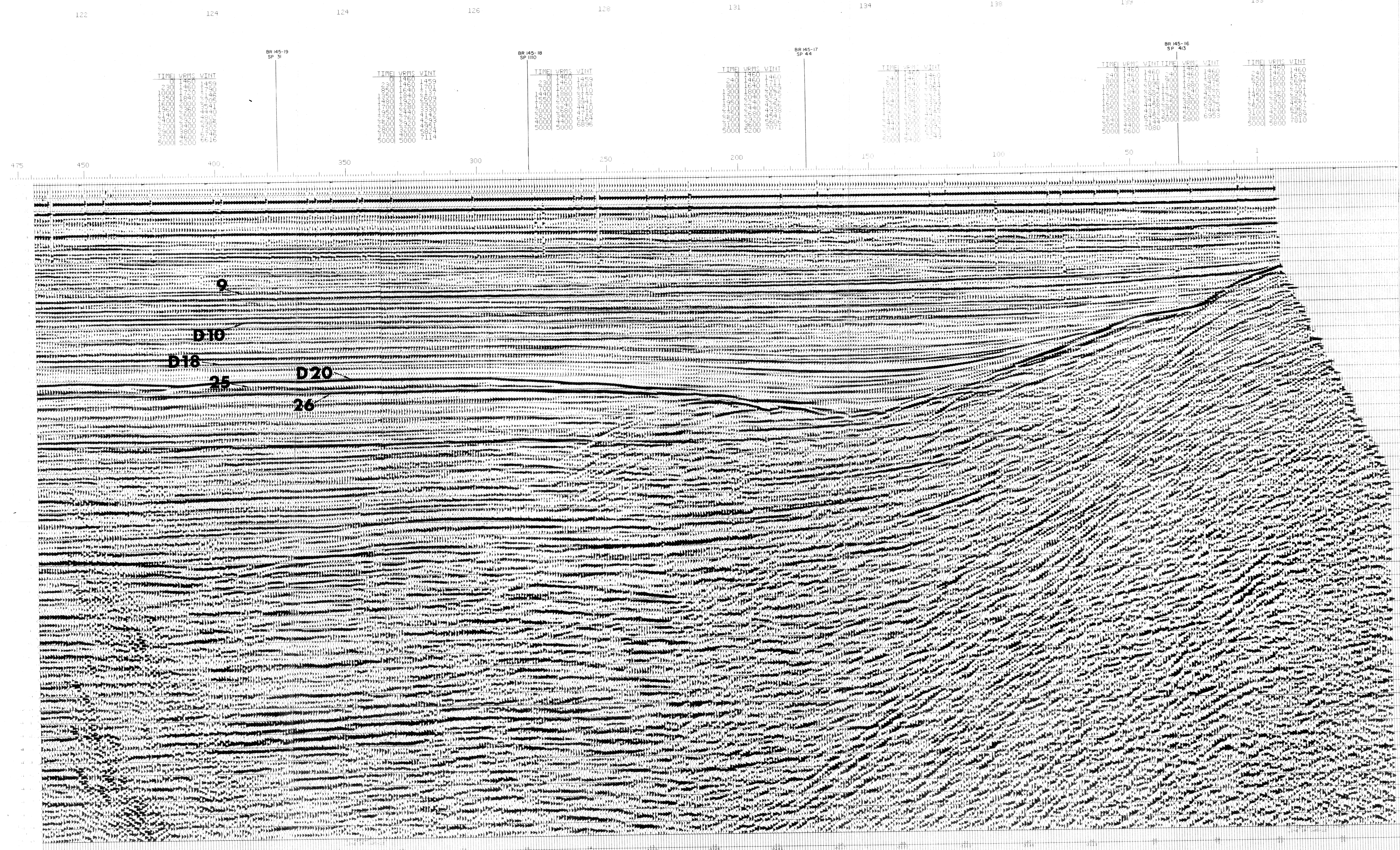
SEFEL J. & ASSOCIATES
DATA PROCESSING CONSULTANTS
(LONDON)

CLIENT COMPAGNIA
PETROLIFERA ITALIANA
PROSPECT MID ADRIATIC SEA
PERMIT BR 145
TVS STACK
SEA LEVEL DATUM
SP 1 TO SP 475
LINE 12 DIRECTION S E →

FIELD PARAMETERS
RECORDED BY GEOPHYSICAL OFFSHORE EXPLORATION
RECORDING DATE APRIL 1978
VESSEL M/V G6EL EGEDE
INSTRUMENTS LRS-686 C88A-1 SEG-C FORMAT
RECORD LENGTH 5.0 SECONDS
SAMPLE INTERVAL 2 MSEC
RECORDING FILTER 6/124 HZ
SOURCE 16 AIR GUNS
TOTAL GUN CAPACITY 2458 CU. IN
OPERATING PRESSURE 2000 PSI
GUN DEPTH 7.6 METRES
CABLE 44 GROUPS - 32 HYDRAPHONES/GRUB
CABLE DEPTH 12.2 METRES
CENTRE OF GUNS TO CENTRE OF NEAR GRUB 203 M
GRUB INTERVAL 50 METRES
SHOT INTERVAL 25 METRES
RECORDING FOLD 4100 PERCENT
PRIMARY NAVIGATION TRISPANDER
SECONDARY NAVIGATION SAT NAV

PROCESSING SEQUENCE
1 DEMULTIPLEX AND BINARY GAIN RECOVERY
INCLUDES RESAMPLING TO 4 MSEC
2 SYNTHETIC GAIN CURVE APPLICATION
3 CDP TRACE GATHER TO 4400 PERCENT
5.0 SECOND DATA LENGTH
INCLUDES NEAR TRACE DISPLAY
INCLUDES EDITING
4 FILTER
5/60 HZ BANDPASS - 320 MSEC 8. L.
5 DECONVOLUTION - W. L. LEAST SQUARES
200 MSEC OPERATOR LENGTH
32 MSEC PREDICTION TIME
HINDBW - WB-50 MS TO WB+2950 MS
SLOPE OF 1660 MS ACROSS 44 TRACES
6 VELOCITY ANALYSES
CONSTANT VELOCITY STACKS
7 NRG REMOVAL
8 FIRST BREAK MUTE
0-228 200-253 400-278 750-353
2500-2553
9 STACK TO 4400 PERCENT
10 BULK STATIC - DATUM CORRECTION
11 TIME VARIANT FILTER
10/50 HZ BANDPASS FROM WB TO 1.5
8/35 HZ BANDPASS FROM 3.0 TO END
1500 MSEC OVERLAP ZONE
12 TIME VARIANT EQUALIZATION
13 FILM DISPLAY
10 CM/SEC VERTICAL SCALE
6 CM * 1 KM HORIZONTAL SCALE

COMMENTS
NORMAL POLARITY
GC GEOPHYSICIST J.A.S. DATE JULY, 1978
INITIALS



BR 145-19
SP 41

TIME	VRMS	VINT
200	1450	1459
300	1460	1469
400	1470	1479
500	1480	1489
600	1490	1499
700	1500	1509
800	1510	1519
900	1520	1529
1000	1530	1539
1100	1540	1549
1200	1550	1559
1300	1560	1569
1400	1570	1579
1500	1580	1589
1600	1590	1599
1700	1600	1609
1800	1610	1619
1900	1620	1629
2000	1630	1639
2100	1640	1649
2200	1650	1659
2300	1660	1669
2400	1670	1679
2500	1680	1689
2600	1690	1699
2700	1700	1709
2800	1710	1719
2900	1720	1729
3000	1730	1739
3100	1740	1749
3200	1750	1759
3300	1760	1769
3400	1770	1779
3500	1780	1789
3600	1790	1799
3700	1800	1809
3800	1810	1819
3900	1820	1829
4000	1830	1839
4100	1840	1849
4200	1850	1859
4300	1860	1869
4400	1870	1879
4500	1880	1889
4600	1890	1899
4700	1900	1909
4800	1910	1919
4900	1920	1929
5000	1930	1939

BR 145-18
SP 40

TIME	VRMS	VINT
200	1460	1469
300	1470	1479
400	1480	1489
500	1490	1499
600	1500	1509
700	1510	1519
800	1520	1529
900	1530	1539
1000	1540	1549
1100	1550	1559
1200	1560	1569
1300	1570	1579
1400	1580	1589
1500	1590	1599
1600	1600	1609
1700	1610	1619
1800	1620	1629
1900	1630	1639
2000	1640	1649
2100	1650	1659
2200	1660	1669
2300	1670	1679
2400	1680	1689
2500	1690	1699
2600	1700	1709
2700	1710	1719
2800	1720	1729
2900	1730	1739
3000	1740	1749
3100	1750	1759
3200	1760	1769
3300	1770	1779
3400	1780	1789
3500	1790	1799
3600	1800	1809
3700	1810	1819
3800	1820	1829
3900	1830	1839
4000	1840	1849
4100	1850	1859
4200	1860	1869
4300	1870	1879
4400	1880	1889
4500	1890	1899
4600	1900	1909
4700	1910	1919
4800	1920	1929
4900	1930	1939
5000	1940	1949

BR 145-17
SP 44

TIME	VRMS	VINT
200	1460	1469
300	1470	1479
400	1480	1489
500	1490	1499
600	1500	1509
700	1510	1519
800	1520	1529
900	1530	1539
1000	1540	1549
1100	1550	1559
1200	1560	1569
1300	1570	1579
1400	1580	1589
1500	1590	1599
1600	1600	1609
1700	1610	1619
1800	1620	1629
1900	1630	1639
2000	1640	1649
2100	1650	1659
2200	1660	1669
2300	1670	1679
2400	1680	1689
2500	1690	1699
2600	1700	1709
2700	1710	1719
2800	1720	1729
2900	1730	1739
3000	1740	1749
3100	1750	1759
3200	1760	1769
3300	1770	1779
3400	1780	1789
3500	1790	1799
3600	1800	1809
3700	1810	1819
3800	1820	1829
3900	1830	1839
4000	1840	1849
4100	1850	1859
4200	1860	1869
4300	1870	1879
4400	1880	1889
4500	1890	1899
4600	1900	1909
4700	1910	1919
4800	1920	1929
4900	1930	1939
5000	1940	1949

BR 145-16
SP 43

TIME	VRMS	VINT
200	1460	1469
300	1470	1479
400	1480	1489
500	1490	1499
600	1500	1509
700	1510	1519
800	1520	1529
900	1530	1539
1000	1540	1549
1100	1550	1559
1200	1560	1569
1300	1570	1579
1400	1580	1589
1500	1590	1599
1600	1600	1609
1700	1610	1619
1800	1620	1629
1900	1630	1639
2000	1640	1649
2100	1650	1659
2200	1660	1669
2300	1670	1679
2400	1680	1689
2500	1690	1699
2600	1700	1709
2700	1710	1719
2800	1720	1729
2900	1730	1739
3000	1740	1749
3100	1750	1759
3200	1760	1769
3300	1770	1779
3400	1780	1789
3500	1790	1799
3600	1800	1809
3700	1810	1819
3800	1820	1829
3900	1830	1839
4000	1840	1849
4100	1850	1859
4200	1860	1869
4300	1870	1879
4400	1880	1889
4500	1890	1899
4600	1900	1909
4700	1910	1919
4800	1920	1929
4900	1930	1939
5000	1940	1949

BR 145-15
SP 42

TIME	VRMS	VINT
200	1460	1469
300	1470	1479
400	1480	1489
500	1490	1499
600	1500	1509
700	1510	1519
800	1520	1529
900	1530	1539
1000	1540	1549
1100	1550	1559
1200	1560	1569
1300	1570	1579
1400	1580	1589
1500	1590	1599
1600	1600	1609
1700	1610	1619
1800	1620	1629
1900	1630	1639
2000	1640	1649
2100	1650	1659
2200	1660	1669
2300	1670	1679
2400	1680	1689
2500	1690	1699
2600	1700	1709
2700	1710	1719
2800	1720	1729
2900	1730	1739
3000	1740	1749
3100	1750	1759
3200	1760	1769
3300	1770	1779
3400	1780	1789
3500	1790	1799
3600	1800	1809
3700	1810	1819
3800	1820	1829
3900	1830	1839
4000	1840	1849
4100	1850	1859
4200	1860	1869
4300	1870	1879
4400	1880	1889
4500	1890	1899
4600	1900	1909
4700	1910	1919
4800	1920	1929
4900	1930	1939
5000	1940	1949

BR 145-14
SP 41

TIME	VRMS	VINT
200	1460	1469
300	1470	1479
400	1480	1489
500	1490	1499
600	1500	1509
700	1510	1519
800	1520	1529
900	1530	1539
1000	1540	1549
1100	1550	1559
1200	1560	1569
1300	1570	1579
1400	1580	1589
1500	1590	1599
1600	1600	1609
1700	1610	1619
1800	1620	1629
1900	1630	1639
2000	1640	1649
2100	1650	1659
2200	1660	1669
2300	1670	1679
2400	1680	1689
2500	1690	1699
2600	1700	1709
2700	1710	1719
2800	1720	1729
2900	1730	1739
3000	1740	1749
3100	1750	1759
3200	1760	1769
3300	1770	1779
3400	1780	1789
3500	1790	1799
3600	1800	1809
3700	1810	1819
3800	1820	1829
3900	1830	1839
4000	1840	1849
4100	1850	1859
4200	1860	1869
4300	1870	1879
4400	1880	1889
4500	1890	1899
4600	1900	1909
4700	1910	1919
4800	1920	1929
4900	1930	1939
5000	1940	1949