

TAV. 4

CLIENT COMPAGNIA PETROLIFERA ITALIANA
 AREA RIMINI - ANCONA
 LINE BR-38
 SP 1-565



RECORDING PARAMETERS

RECORDED BY GEOPHYSICAL OFFSHORE EXPLORATION

| | | | |
|---------------------|------------------|---------------------|------------|
| Party | M. S. Geol. Egge | Date | March 1978 |
| Instruments | 65.000 JGA | Gain | 2000 |
| Source | 4.000 S | Source Delay | 0 |
| Shot Point | 4.000 S | Shot Depth | 7.50 |
| Shot Interval | 1.000 | Shot per Shotpoint | 1 |
| Shot Group | 1.000 | Shot Interval | 200 |
| Shot Length | 0.200 | Shot Length | 2.00 |
| Shot Interval | 0.100 | Shot Interval | 0.100 |
| Shot Delay | 0.000 | Shot Delay | 0.000 |
| Shot Group Delay | 0.000 | Shot Group Delay | 0.000 |
| Shot Group Interval | 0.000 | Shot Group Interval | 0.000 |



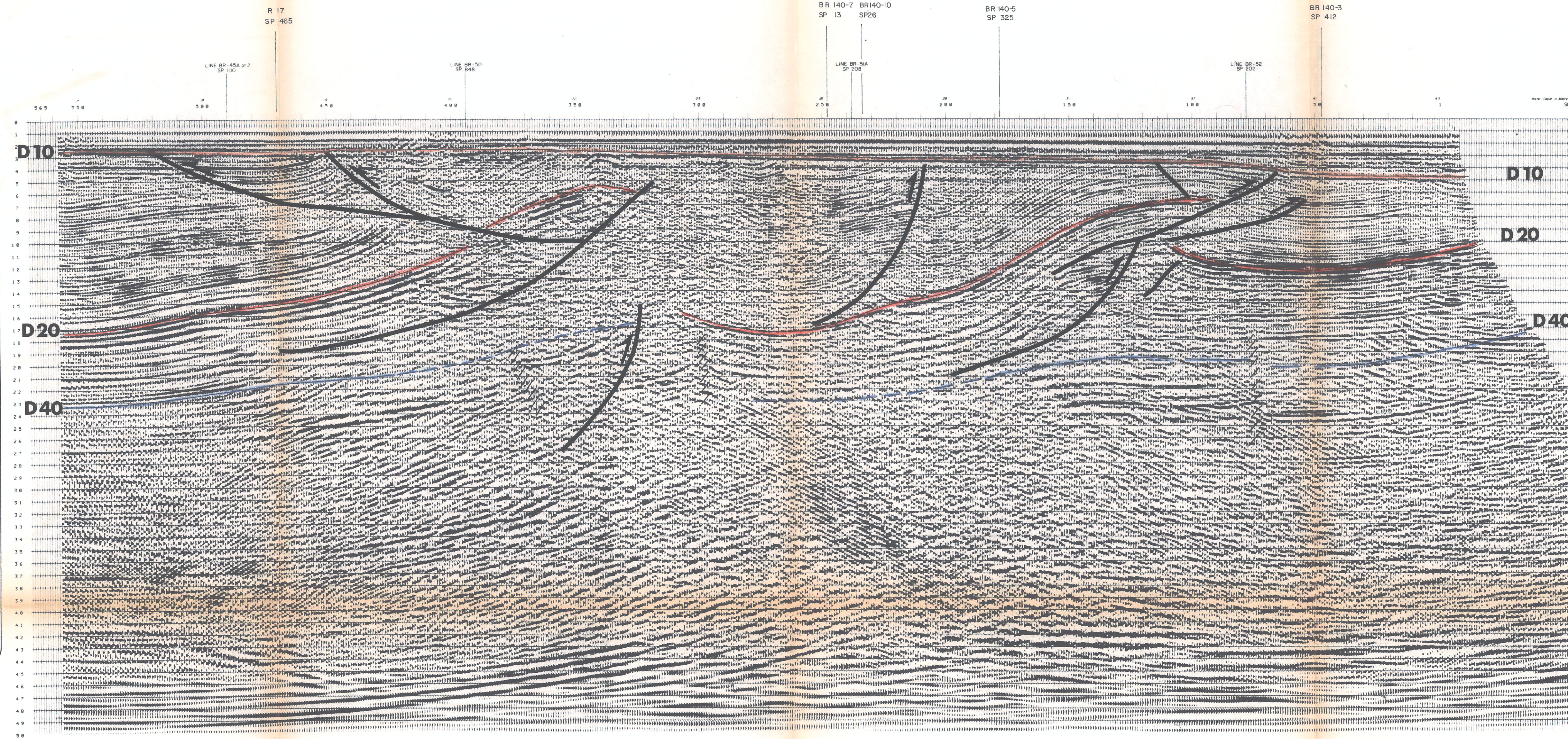
PROCESSING PARAMETERS

PROCESSED BY SEFEL
 PROCESSOR: SEFEL SYSTEM
 DEMONSTRATION AND BANDWIDTH RECOVERY
 TIME-LAPSE GAIN APPLICATION
 BANDWIDTH DIGITAL FILTER: 5.000 Hz (0.500 octave)
 DECONVOLUTION BEFORE STACK

PROCESSED BY DIGICON
 DIGITAL WAVE EQUATION MIGRATION
 TIME-LAPSE BANDWIDTH CORRECTION

DISPLAY PARAMETERS
A3967
 POLARITY CONVENTION: Negative Nomin. on Top (Inverted on Trough)
 MAGNITUDE SCALE: 1.000
 TIME SCALE: 1.000 sec

PROCESSED BY **digicon**
 digital exploration limited
 east grinstead england



| SP. 1 | | SP. 450 | |
|-------|-------|---------|-------|
| T | Y | T | Y |
| 0 | 1400 | 0 | 1400 |
| 100 | 1400 | 100 | 1400 |
| 200 | 2800 | 200 | 2800 |
| 300 | 2800 | 300 | 2800 |
| 400 | 4200 | 400 | 4200 |
| 500 | 4200 | 500 | 4200 |
| 600 | 5600 | 600 | 5600 |
| 700 | 5600 | 700 | 5600 |
| 800 | 7000 | 800 | 7000 |
| 900 | 7000 | 900 | 7000 |
| 1000 | 8400 | 1000 | 8400 |
| 1100 | 8400 | 1100 | 8400 |
| 1200 | 9800 | 1200 | 9800 |
| 1300 | 9800 | 1300 | 9800 |
| 1400 | 11200 | 1400 | 11200 |
| 1500 | 11200 | 1500 | 11200 |
| 1600 | 12600 | 1600 | 12600 |
| 1700 | 12600 | 1700 | 12600 |
| 1800 | 14000 | 1800 | 14000 |
| 1900 | 14000 | 1900 | 14000 |
| 2000 | 15400 | 2000 | 15400 |
| 2100 | 15400 | 2100 | 15400 |
| 2200 | 16800 | 2200 | 16800 |
| 2300 | 16800 | 2300 | 16800 |
| 2400 | 18200 | 2400 | 18200 |
| 2500 | 18200 | 2500 | 18200 |
| 2600 | 19600 | 2600 | 19600 |
| 2700 | 19600 | 2700 | 19600 |
| 2800 | 21000 | 2800 | 21000 |
| 2900 | 21000 | 2900 | 21000 |
| 3000 | 22400 | 3000 | 22400 |
| 3100 | 22400 | 3100 | 22400 |
| 3200 | 23800 | 3200 | 23800 |
| 3300 | 23800 | 3300 | 23800 |
| 3400 | 25200 | 3400 | 25200 |
| 3500 | 25200 | 3500 | 25200 |
| 3600 | 26600 | 3600 | 26600 |
| 3700 | 26600 | 3700 | 26600 |
| 3800 | 28000 | 3800 | 28000 |
| 3900 | 28000 | 3900 | 28000 |
| 4000 | 29400 | 4000 | 29400 |
| 4100 | 29400 | 4100 | 29400 |
| 4200 | 30800 | 4200 | 30800 |
| 4300 | 30800 | 4300 | 30800 |
| 4400 | 32200 | 4400 | 32200 |
| 4500 | 32200 | 4500 | 32200 |
| 4600 | 33600 | 4600 | 33600 |
| 4700 | 33600 | 4700 | 33600 |
| 4800 | 35000 | 4800 | 35000 |
| 4900 | 35000 | 4900 | 35000 |
| 5000 | 36400 | 5000 | 36400 |
| 5100 | 36400 | 5100 | 36400 |

| SP. 113 | |
|---------|-------|
| T | Y |
| 0 | 1400 |
| 100 | 1400 |
| 200 | 2800 |
| 300 | 2800 |
| 400 | 4200 |
| 500 | 4200 |
| 600 | 5600 |
| 700 | 5600 |
| 800 | 7000 |
| 900 | 7000 |
| 1000 | 8400 |
| 1100 | 8400 |
| 1200 | 9800 |
| 1300 | 9800 |
| 1400 | 11200 |
| 1500 | 11200 |
| 1600 | 12600 |
| 1700 | 12600 |
| 1800 | 14000 |
| 1900 | 14000 |
| 2000 | 15400 |
| 2100 | 15400 |
| 2200 | 16800 |
| 2300 | 16800 |
| 2400 | 18200 |
| 2500 | 18200 |
| 2600 | 19600 |
| 2700 | 19600 |
| 2800 | 21000 |
| 2900 | 21000 |
| 3000 | 22400 |
| 3100 | 22400 |
| 3200 | 23800 |
| 3300 | 23800 |
| 3400 | 25200 |
| 3500 | 25200 |
| 3600 | 26600 |
| 3700 | 26600 |
| 3800 | 28000 |
| 3900 | 28000 |
| 4000 | 29400 |
| 4100 | 29400 |
| 4200 | 30800 |
| 4300 | 30800 |
| 4400 | 32200 |
| 4500 | 32200 |
| 4600 | 33600 |
| 4700 | 33600 |
| 4800 | 35000 |
| 4900 | 35000 |
| 5000 | 36400 |
| 5100 | 36400 |

| SP. 220 | |
|---------|-------|
| T | Y |
| 0 | 1400 |
| 100 | 1400 |
| 200 | 2800 |
| 300 | 2800 |
| 400 | 4200 |
| 500 | 4200 |
| 600 | 5600 |
| 700 | 5600 |
| 800 | 7000 |
| 900 | 7000 |
| 1000 | 8400 |
| 1100 | 8400 |
| 1200 | 9800 |
| 1300 | 9800 |
| 1400 | 11200 |
| 1500 | 11200 |
| 1600 | 12600 |
| 1700 | 12600 |
| 1800 | 14000 |
| 1900 | 14000 |
| 2000 | 15400 |
| 2100 | 15400 |
| 2200 | 16800 |
| 2300 | 16800 |
| 2400 | 18200 |
| 2500 | 18200 |
| 2600 | 19600 |
| 2700 | 19600 |
| 2800 | 21000 |
| 2900 | 21000 |
| 3000 | 22400 |
| 3100 | 22400 |
| 3200 | 23800 |
| 3300 | 23800 |
| 3400 | 25200 |
| 3500 | 25200 |
| 3600 | 26600 |
| 3700 | 26600 |
| 3800 | 28000 |
| 3900 | 28000 |
| 4000 | 29400 |
| 4100 | 29400 |
| 4200 | 30800 |
| 4300 | 30800 |
| 4400 | 32200 |
| 4500 | 32200 |
| 4600 | 33600 |
| 4700 | 33600 |
| 4800 | 35000 |
| 4900 | 35000 |
| 5000 | 36400 |
| 5100 | 36400 |

| SP. 343 | |
|---------|-------|
| T | Y |
| 0 | 1400 |
| 100 | 1400 |
| 200 | 2800 |
| 300 | 2800 |
| 400 | 4200 |
| 500 | 4200 |
| 600 | 5600 |
| 700 | 5600 |
| 800 | 7000 |
| 900 | 7000 |
| 1000 | 8400 |
| 1100 | 8400 |
| 1200 | 9800 |
| 1300 | 9800 |
| 1400 | 11200 |
| 1500 | 11200 |
| 1600 | 12600 |
| 1700 | 12600 |
| 1800 | 14000 |
| 1900 | 14000 |
| 2000 | 15400 |
| 2100 | 15400 |
| 2200 | 16800 |
| 2300 | 16800 |
| 2400 | 18200 |
| 2500 | 18200 |
| 2600 | 19600 |
| 2700 | 19600 |
| 2800 | 21000 |
| 2900 | 21000 |
| 3000 | 22400 |
| 3100 | 22400 |
| 3200 | 23800 |
| 3300 | 23800 |
| 3400 | 25200 |
| 3500 | 25200 |
| 3600 | 26600 |
| 3700 | 26600 |
| 3800 | 28000 |
| 3900 | 28000 |
| 4000 | 29400 |
| 4100 | 29400 |
| 4200 | 30800 |
| 4300 | 30800 |
| 4400 | 32200 |
| 4500 | 32200 |
| 4600 | 33600 |
| 4700 | 33600 |
| 4800 | 35000 |
| 4900 | 35000 |
| 5000 | 36400 |
| 5100 | 36400 |